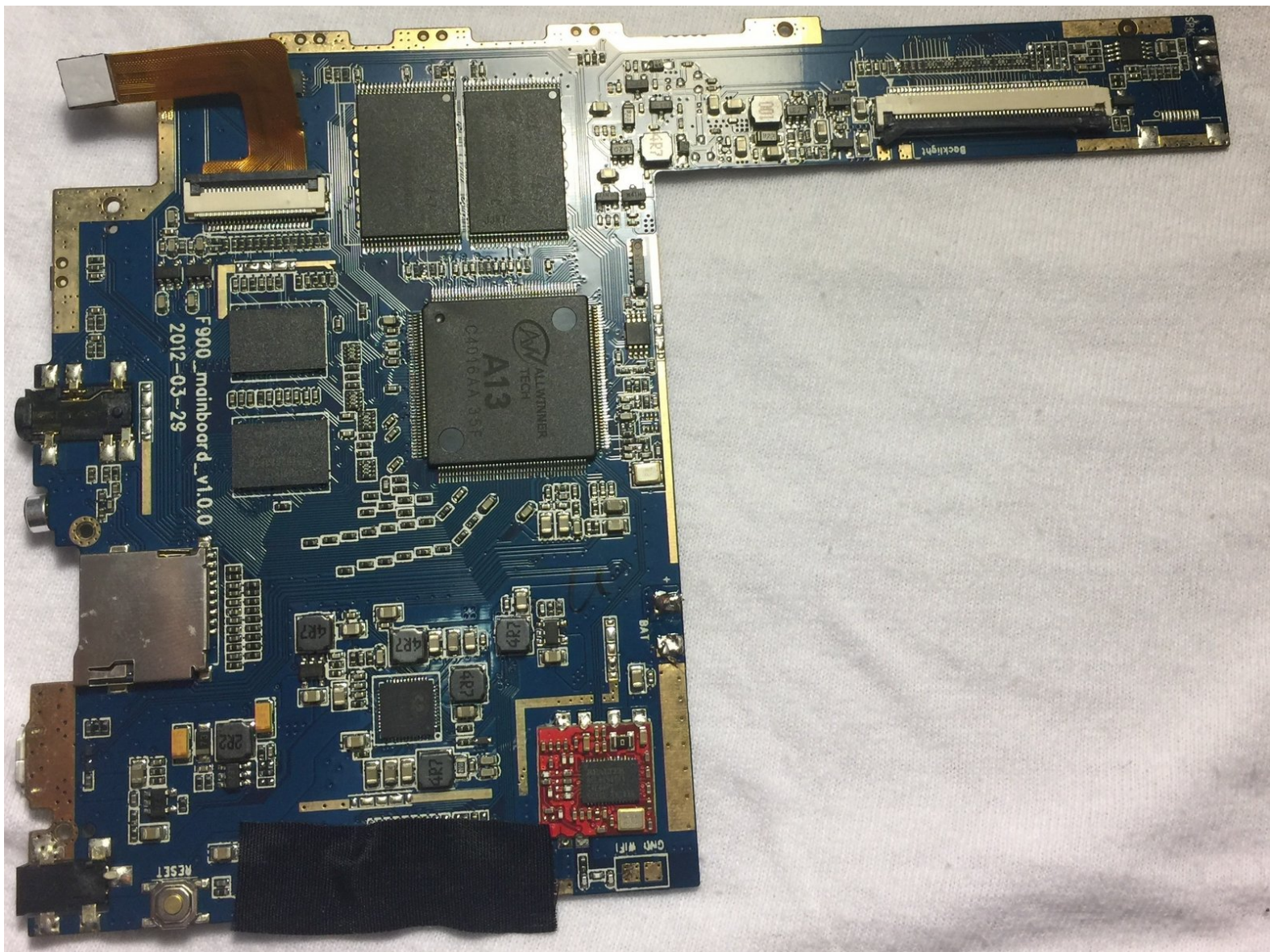




# Mid F900 Motherboard Replacement

Replace your motherboard to restore functionality to your Mid F900 tablet.

Written By: Matthew Oliva



---

## INTRODUCTION

This is a guide to replace the motherboard in the device. Make sure to follow all the steps correctly and handle with care.



### TOOLS:

- [JIS Driver Set](#) (1)
  - [iFixit Opening Tools](#) (1)
  - [Soldering Iron](#) (1)
-



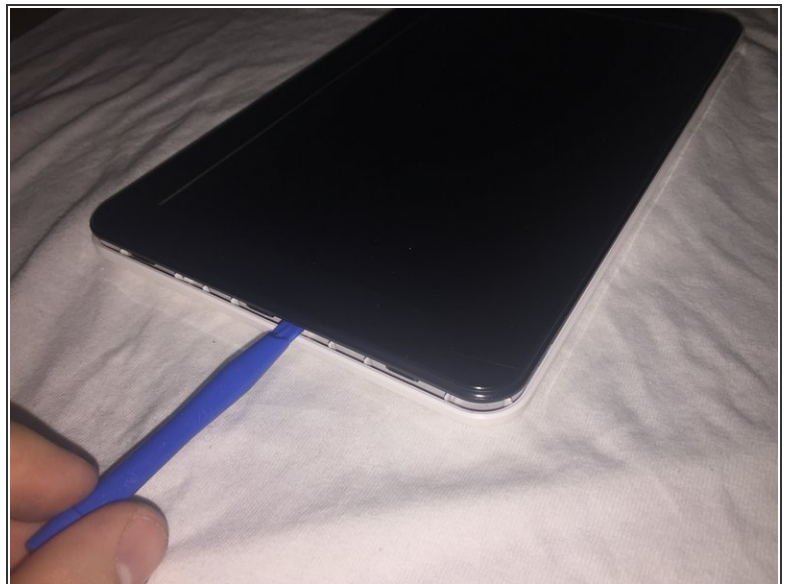
## Step 1 — Back Cover



- Using a J00 Phillips-head screwdriver, remove the two screws located at the bottom of the device.

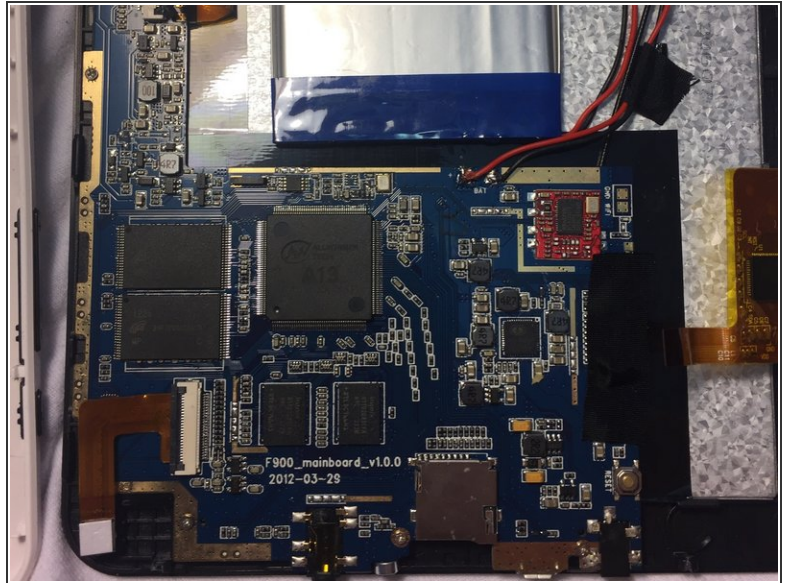
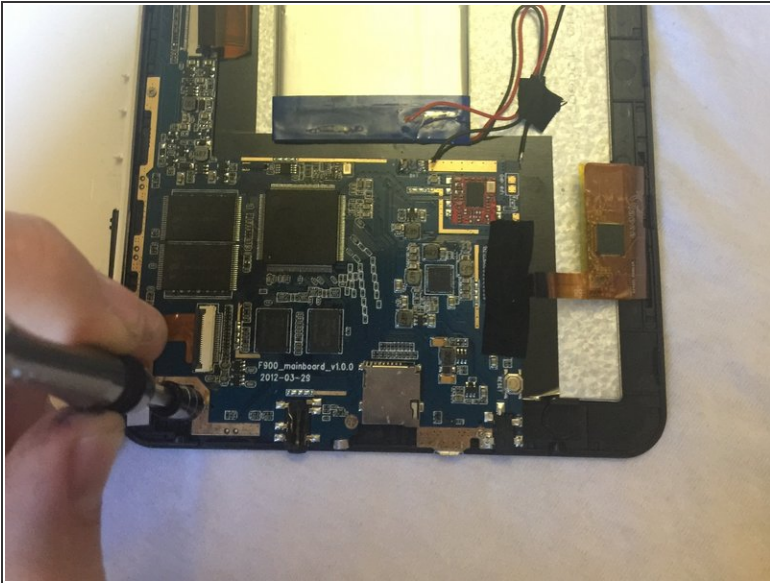
ⓘ Screws are 5mm x 1mm in size.

## Step 2



- Use the plastic opening tool to pry off the white back-plate of the device.

## Step 3 — Motherboard



- Using a +00 Phillips head screwdriver, remove the screws securing the motherboard to the device housing.

ⓘ Screws are 4mm x 1mm in size.

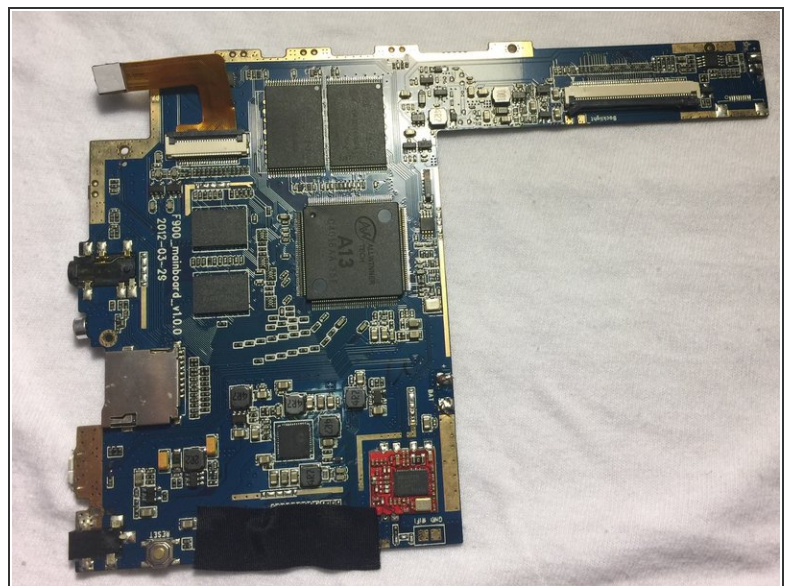
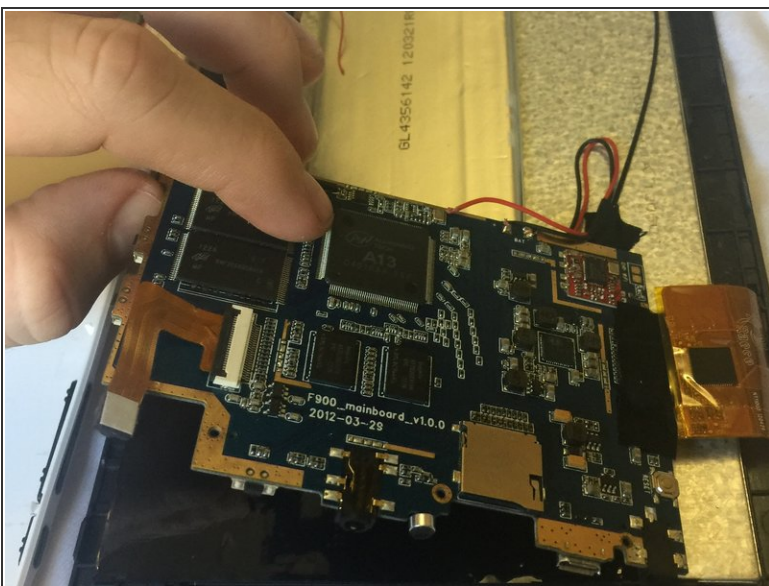


## Step 4



- Desolder the two black and red wires connected to the motherboard.
- Unclip and remove the ribbon cables attached to the motherboard.
- ⓘ For soldering help, use the [How to Solder and Desolder Connections](#) guide.

## Step 5



- Carefully lift and remove the motherboard from the device housing.

To reassemble your device, follow these instructions in reverse order.