



Toshiba Portege R700-S1312 Hard Drive Replacement

This guide will show you how to access and replace your laptop's hard drive.

Written By: Francisco Vilchis





TOOLS:

- [Phillips #00 Screwdriver](#) (1)



PARTS:

- [250 GB SSD](#) (1)

This guide features a solid state drive (SSD) as the replacement part, but any standard laptop hard drive will also work.

Step 1 — Battery



- Locate the battery on the backside of the laptop. The battery is usually located at the bottom.

Step 2



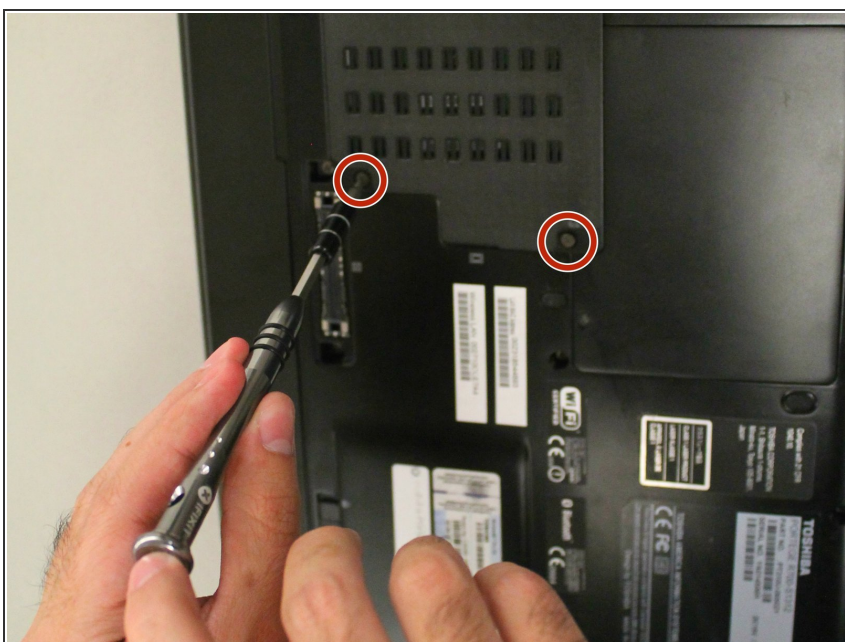
- Locate the battery lock button and push it towards the unlock position.

Step 3



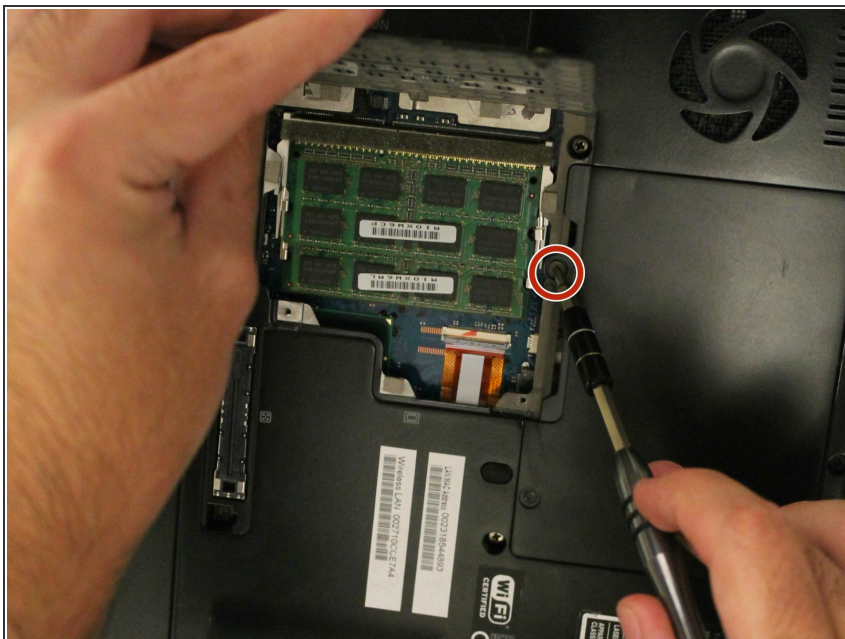
- Hold the next lock in the unlock position. Simultaneously pull the battery towards you.

Step 4 — Hard Drive



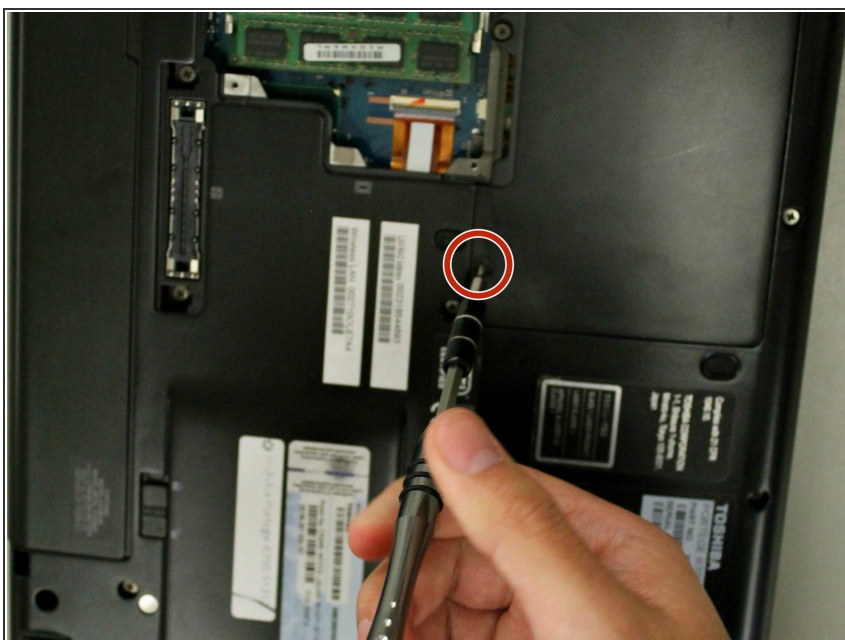
- Remove the 40 mm screws from the RAM cover using a Phillips #00 Screwdriver.

Step 5



- Lift and remove the RAM cover to reveal the first of 2 40mm screws holding down the hard drive cover. Remove the screw using a Phillips #00 Screwdriver.

Step 6



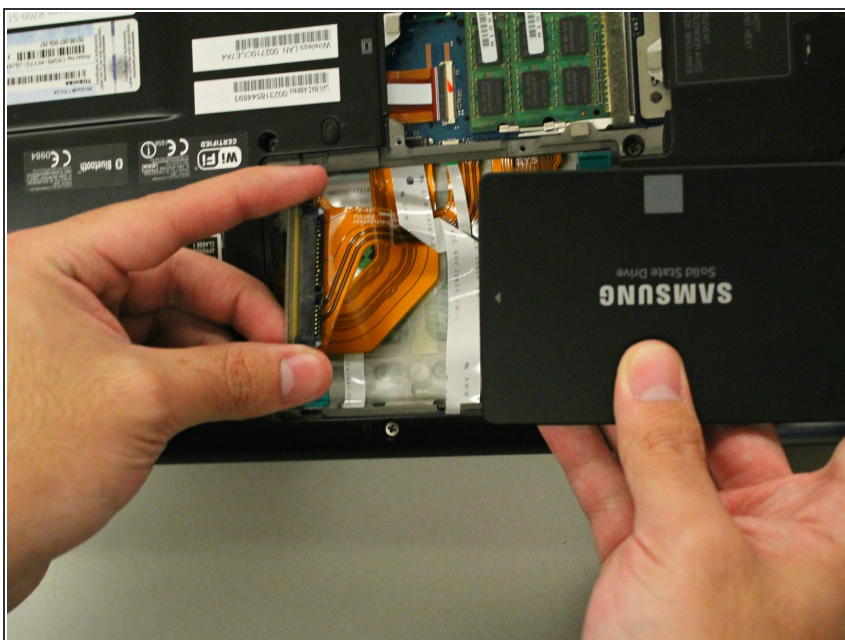
- Remove the second 40mm hard drive cover screw using a Phillips #00 Screwdriver.

Step 7



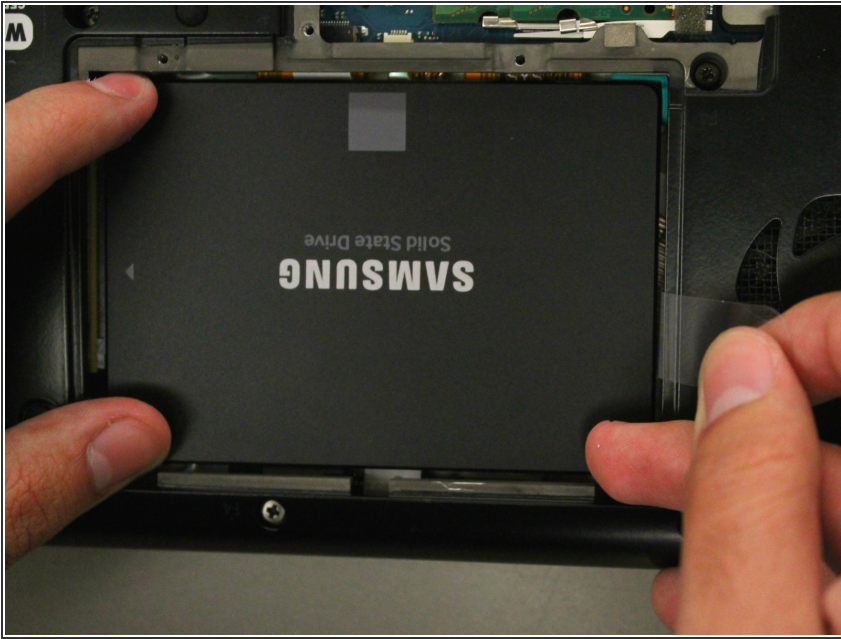
- Lift and remove the hard drive cover.

Step 8



- Connect the drive (in this case a solid state drive) to the laptop using the SATA cable located inside the hard drive placement area.

Step 9



- Once the drive is connected, carefully insert the drive into the laptop enclosure.

To reassemble your device, follow these instructions in reverse order.