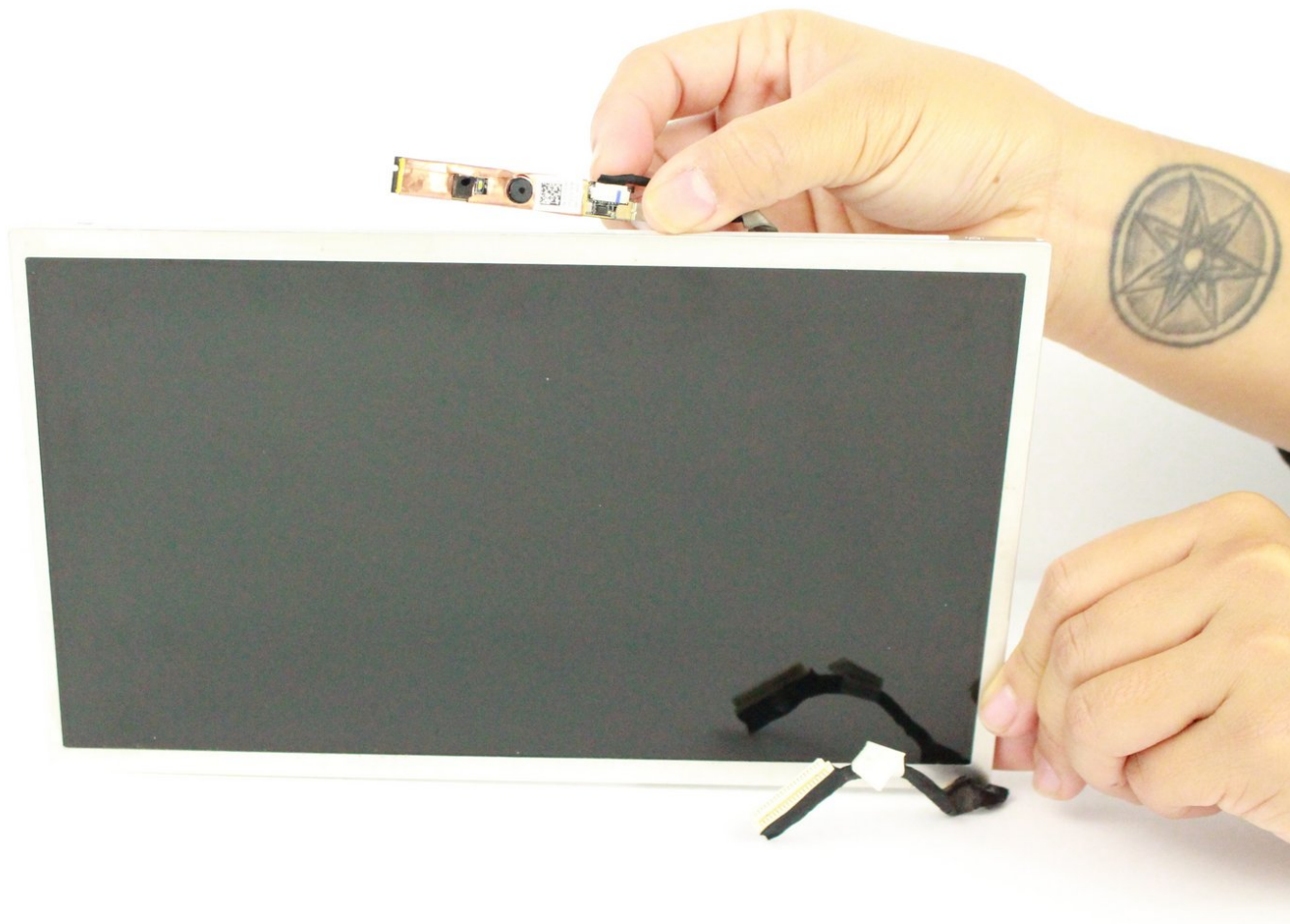




Dell Inspiron Mini 10 Display Panel Replacement

This guide will give you step to step instructions on how to replace your dying, cracked or damaged screen on your device.

Written By: Melissa Russell



INTRODUCTION

This guide will take you through removing the display. This may be a necessary process if the display is not functioning properly or is broken. The display panel and motherboard are extremely fragile so remember when replacing to handle with care and consider placing onto a towel.



TOOLS:

- [Spudger](#) (1)
 - [Tweezers](#) (1)
 - [iFixit Opening Tools](#) (1)
 - [64 Bit Driver Kit](#) (1)
 - [Phillips #0 Screwdriver](#) (1)
-

Step 1 — Battery



- ⚠ To prevent injury and loss of data, ensure the device is turned off.
- Slide the release latches out toward the edges to unlock the battery.

Step 2




- Remove the battery by pulling it up and out.

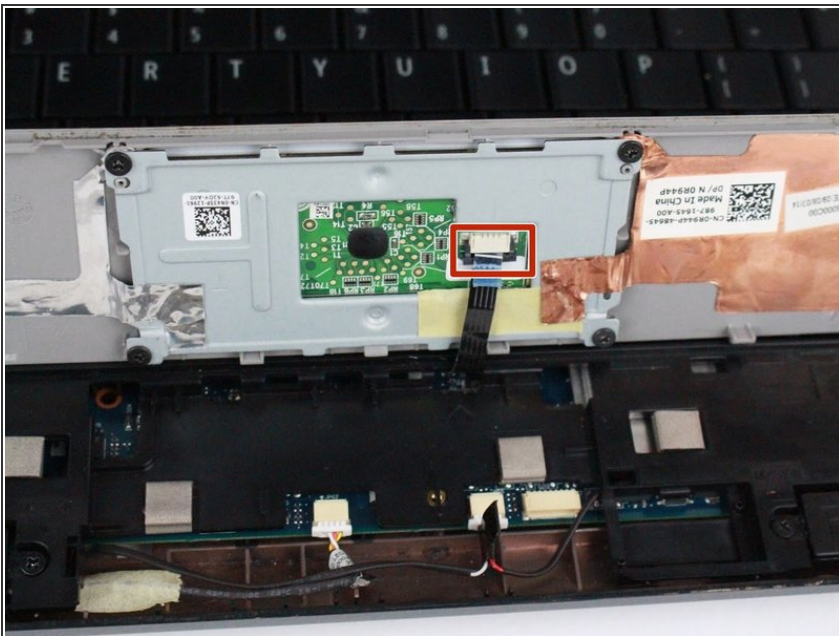
Step 3 — Palm Rest



- Using a prying tool, gently pry the palm rest off of the palm rest bracket. Start prying from one side and slowly work your way around.

 Carefully remove the palm rest from the computer base since it is still connected by a cable and to avoid damage to the palm rest.

Step 4



- Gently pull the touchpad cable off the palm rest bracket.
- Lift the rest of the palm rest off the computer base.

Step 5 — Keyboard



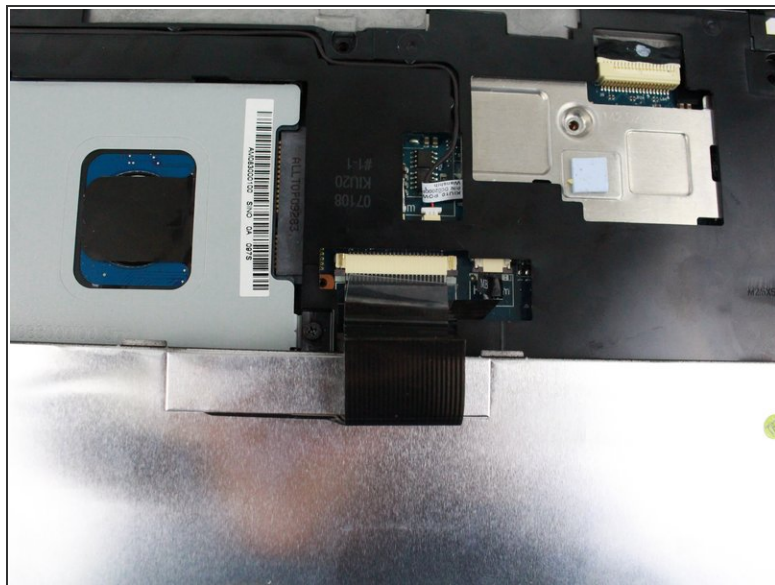
- Remove the three 8mm Philips 0 screws securing the keyboard.

Step 6



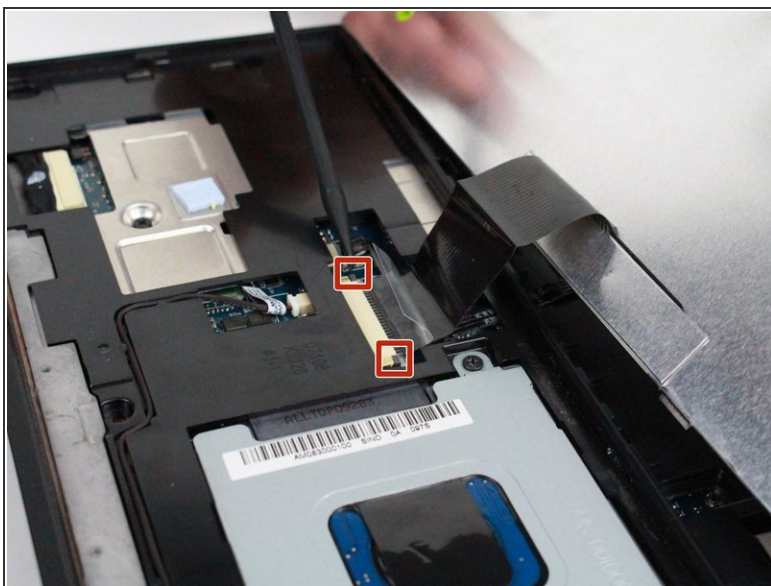
- Turn over the device and open the display.
- Gently pry open the keyboard with the plastic opening tool, working under the edges to release the clips.

Step 7



⚠ Lift the keyboard off of the support bracket carefully since it is still connected by a ribbon cable.

Step 8



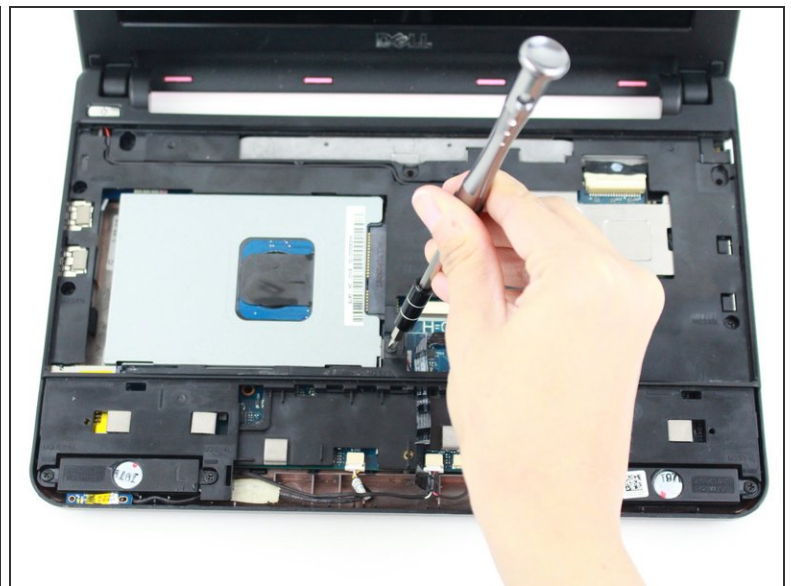
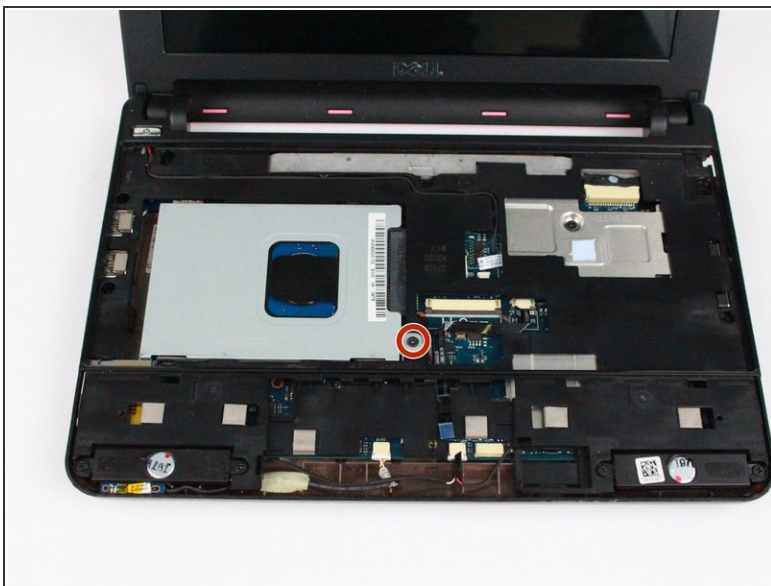
- Push the clips out on either side of the ribbon cable to release it.
- Gently disconnect the ribbon cable by pulling on the clear tab.
- Remove the keyboard.

Step 9 — Palm Rest Bracket



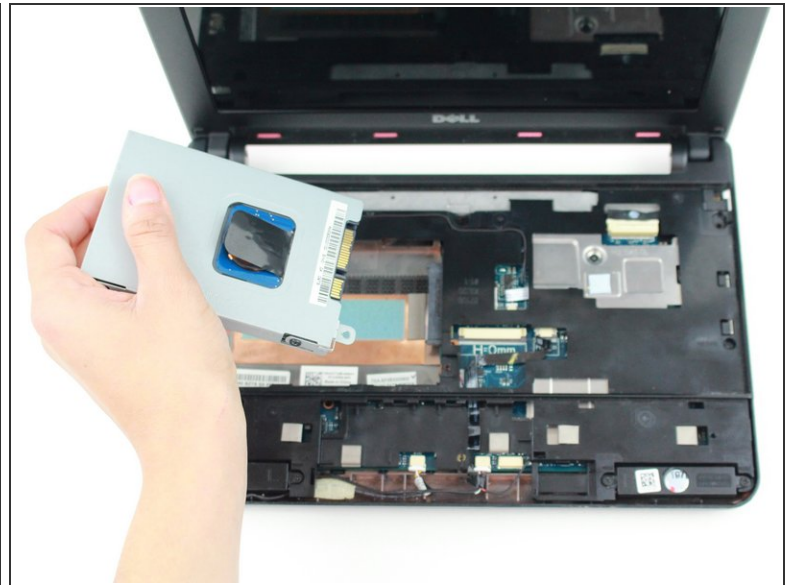
- Close the device and turn over.
- Remove the five 8mm Phillips 0 screws.

Step 10



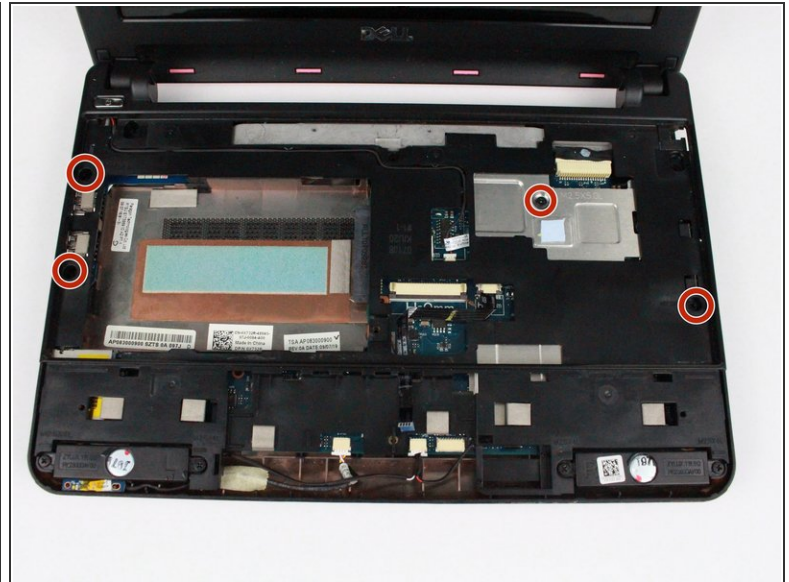
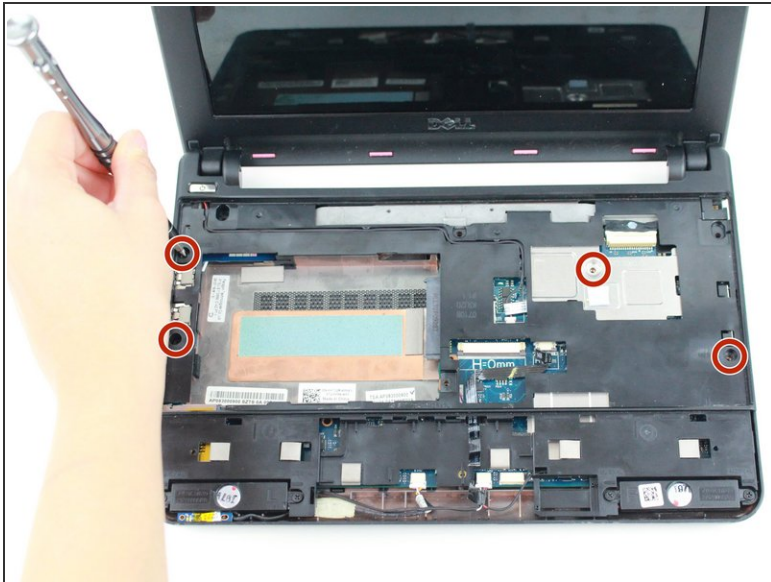
- Turn the device over and open the display.
- Remove the single 8mm Phillips 0 screw attaching the hard-drive cage to the body of the device.

Step 11



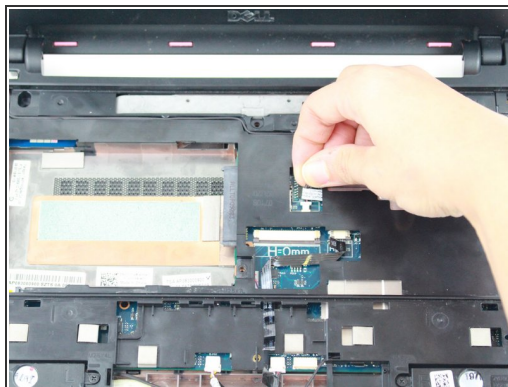
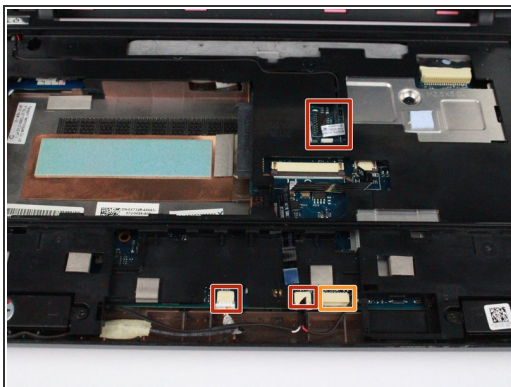
- Pull on the black tab and slide the hard-drive cage toward the USB port on the left side of the device until its comes free and carefully lift out of device.

Step 12



- Remove the four 6mm Philips 0 screws securing the bracket.

Step 13



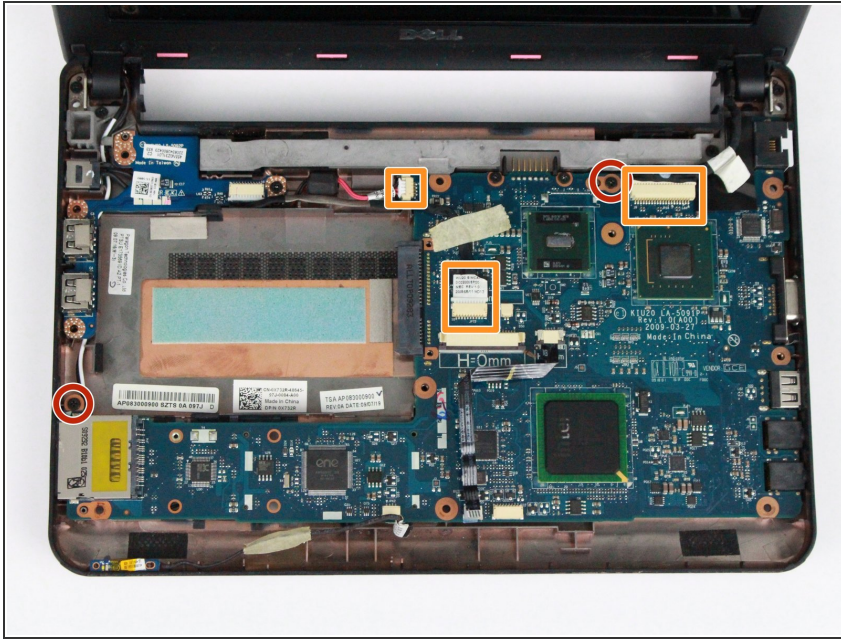
- Disconnect the following:
 - Power button cable
 - Speaker cable
 - Power status light cable
 - Bluetooth cable (if installed)

Step 14



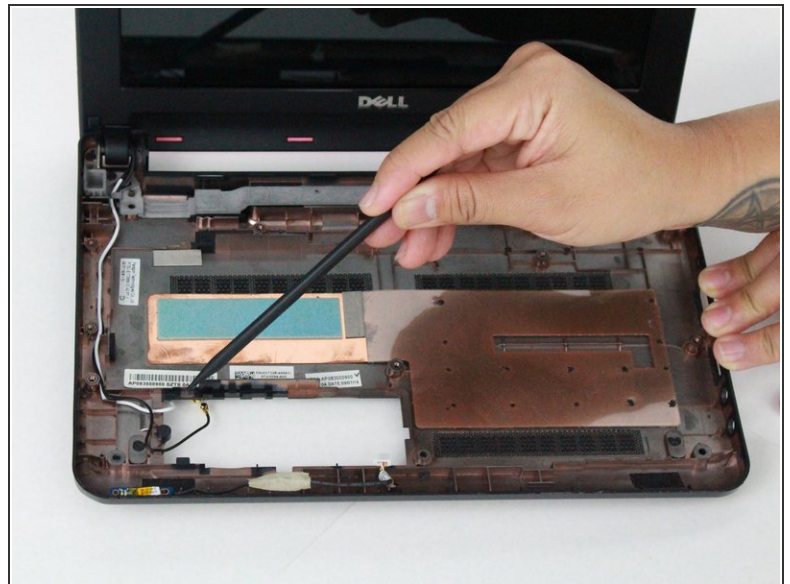
- Gently pry off the bracket using the prying tool.

Step 15 — Motherboard



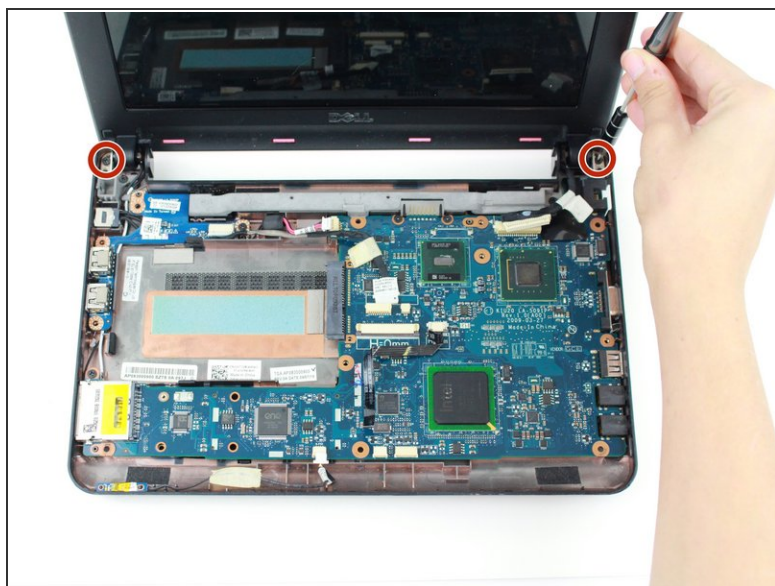
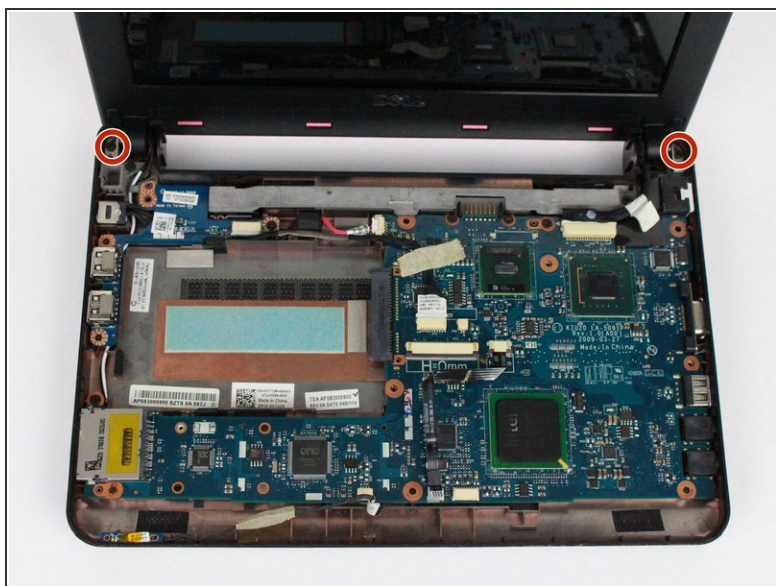
- Remove the following:
 - Two 4mm Phillips screws securing the motherboard
 - AC adapter cable
 - USB and SIM card cable connector
 - Display cable connector
- Carefully lift the motherboard out.

Step 16 — Display Panel



- Pull the Mini-Card cables out of the computer base. They slide out from under a few pieces of plastic that secure them to the base.

Step 17



- Remove the two 4 mm Phillips 0 screws that secure the display assembly to the computer base.

Step 18



- Lift and remove the display assembly from the computer base.

Step 19



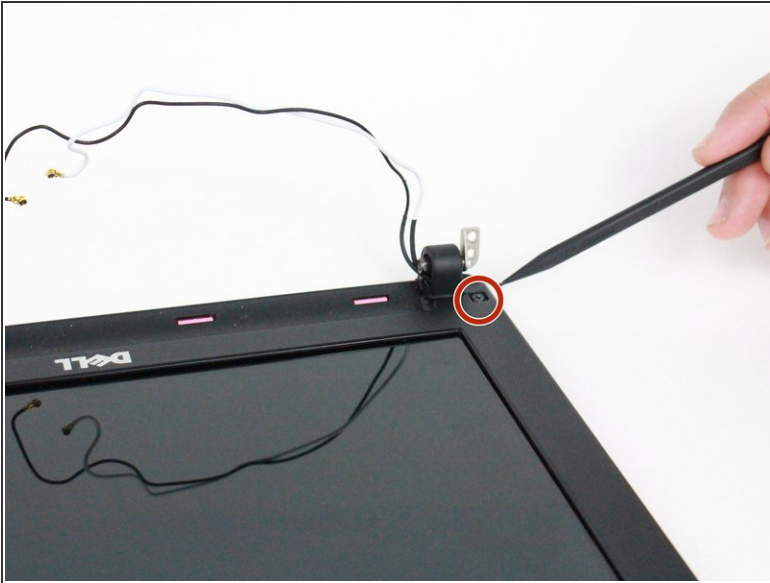
- Press and remove the hinge cover caps using the spudger.

Step 20



- Remove the two rubber pads on the display bezel screws using a finger nail, prying tool or Spudger.
- There is one on either side.

Step 21



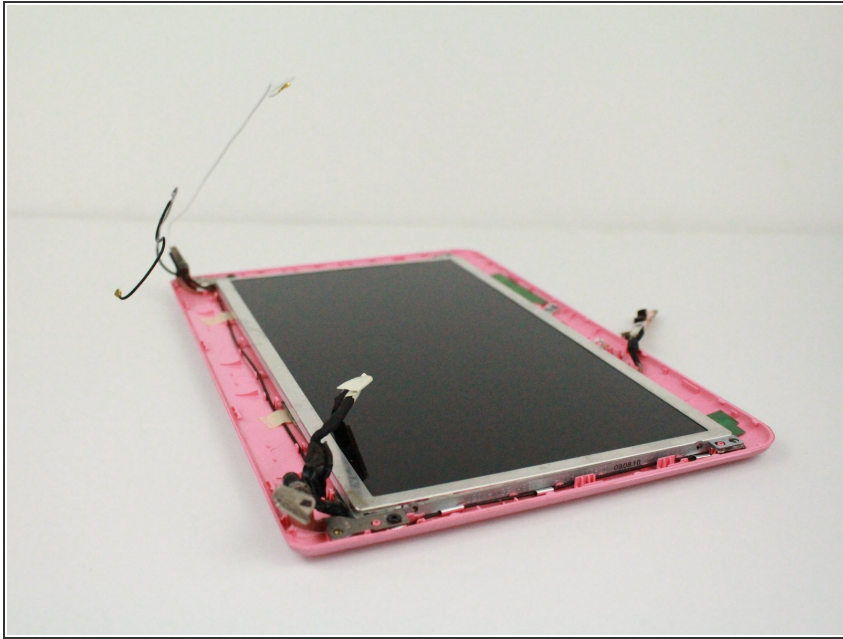
- Remove the two 4 mm Phillips 0 screws on the display bezel.

Step 22



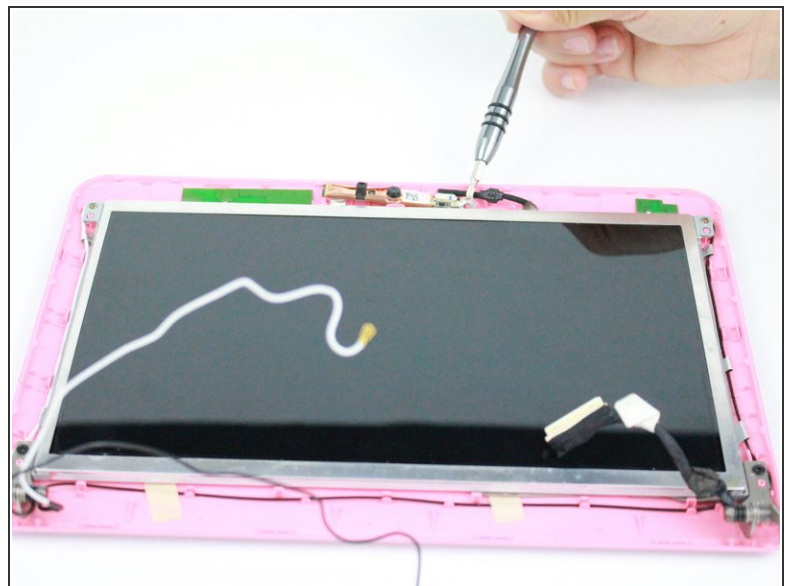
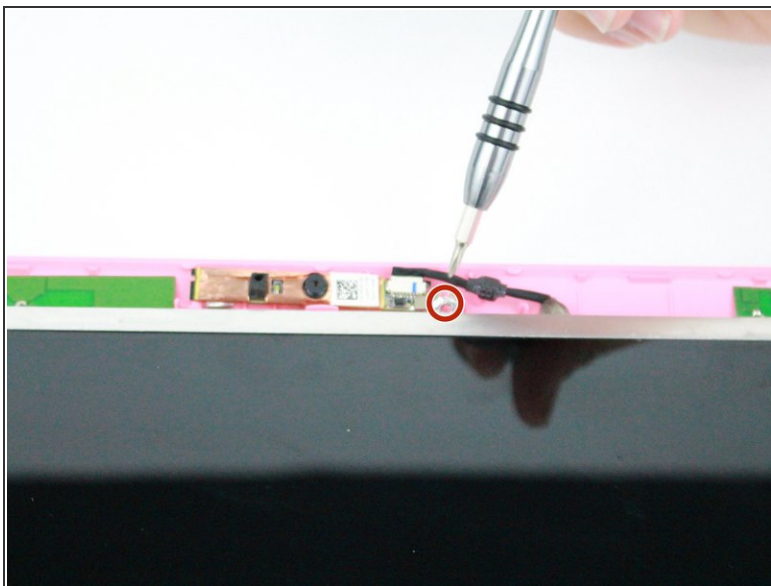
- Using the plastic opening tool gently pry up the inside edge of the display bezel.

Step 23



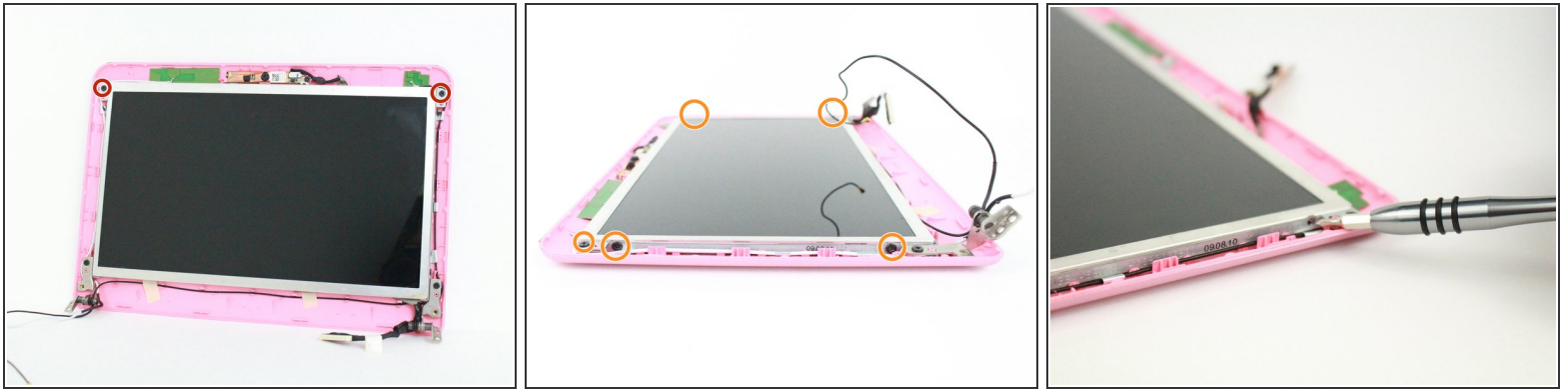
- Remove the display bezel using a plastic prying tool.

Step 24



- Remove the single 3mm Phillips screw securing the camera to the display panel.

Step 25



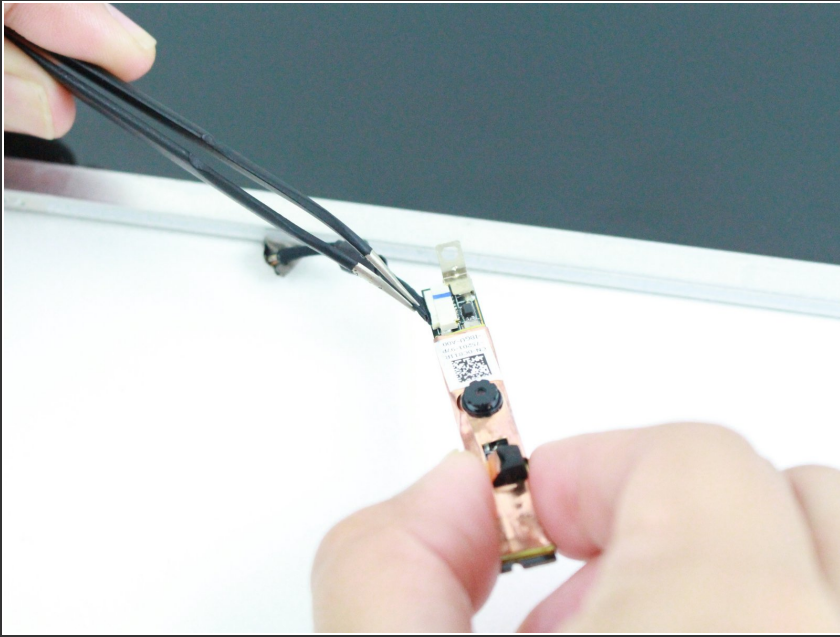
- Remove the two 4mm Phillips 0 screws that are visible from the top.
- Remove the four 3mm Phillips screws on the side of the display panel securing it to the display cover.

Step 26



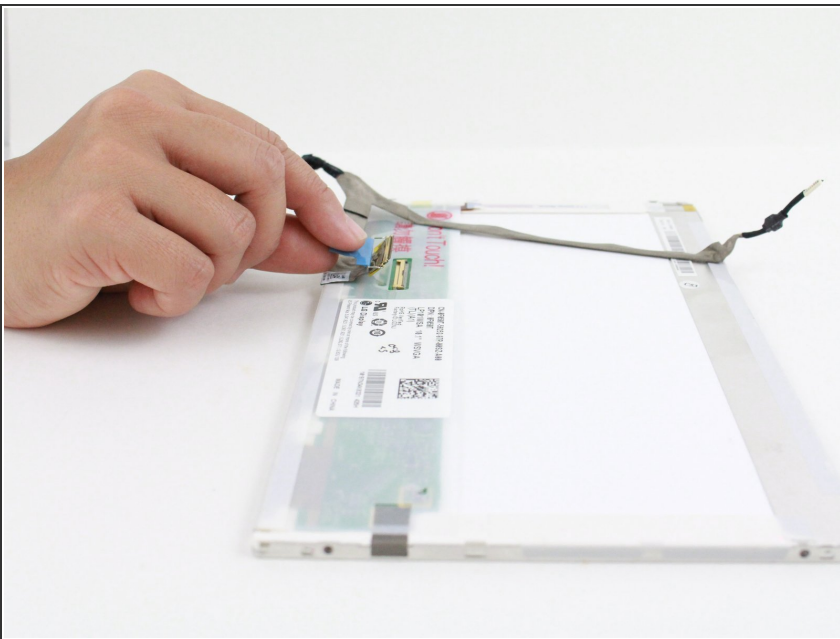
- Remove the display panel.
- ⚠ The display panel is fragile, handle with care.

Step 27



- Disconnect the camera cable using tweezers.

Step 28



- Remove the panel connector by pulling on the blue tab on the back of the display panel.

To reassemble your device, follow these instructions in reverse order.