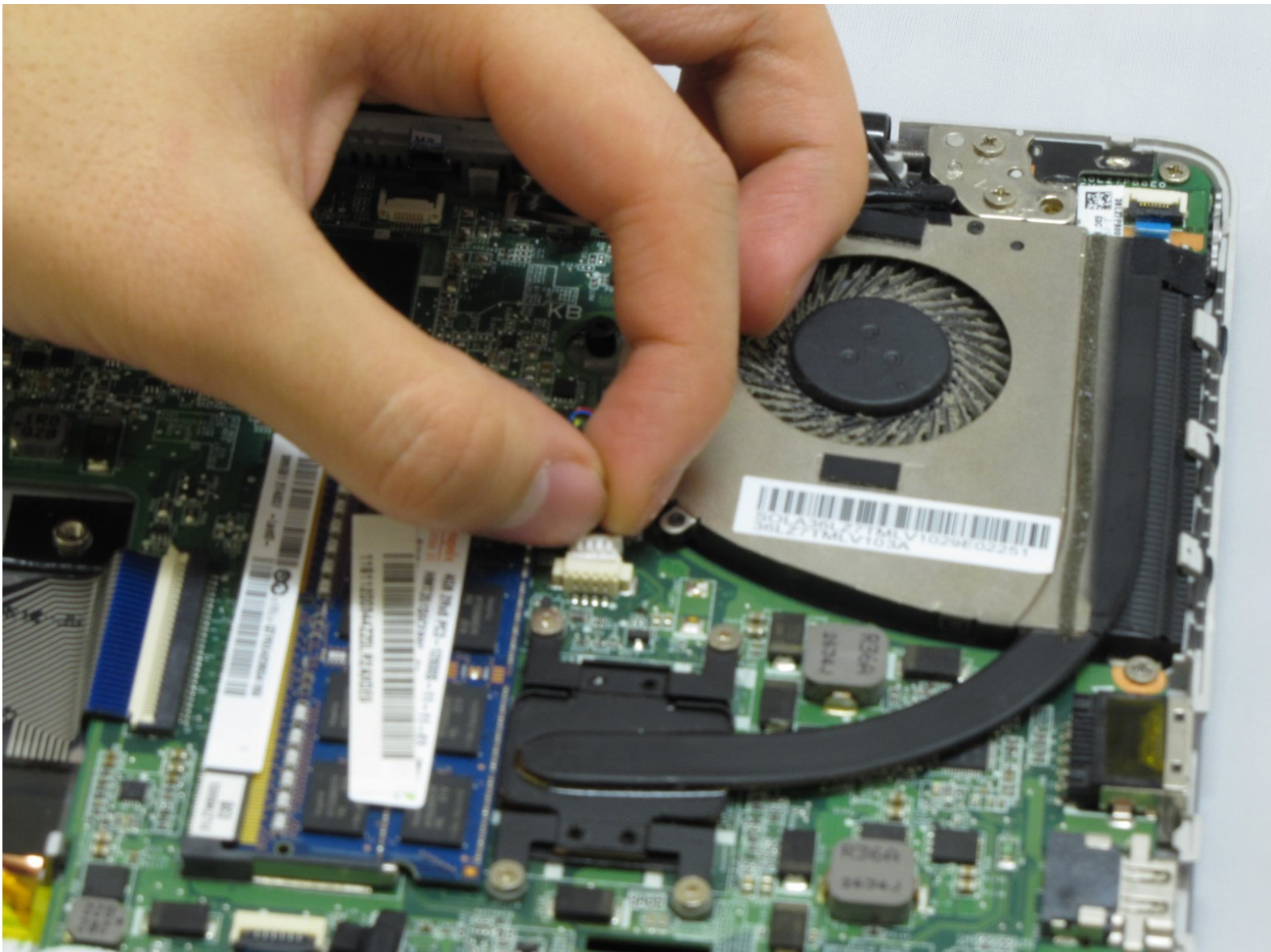




Lenovo IdeaPad U310 Fan Replacement

Step by Step instructions on how to replace the Fan in your Lenovo IdeaPad U310.

Written By: Tommie Tucker



INTRODUCTION

If your Lenovo IdeaPad U310 is having problems with overheating, a broken fan may be to blame. This fan replacement guide will show you exactly how to replace it.



TOOLS:

- [iFixit Opening Tools](#) (1)
 - [Phillips #1 Screwdriver](#) (1)
-

Step 1 — Battery



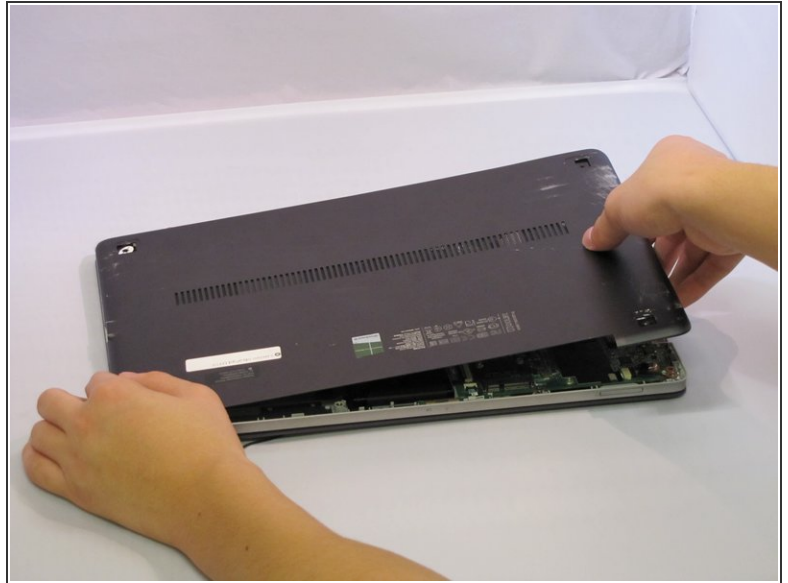
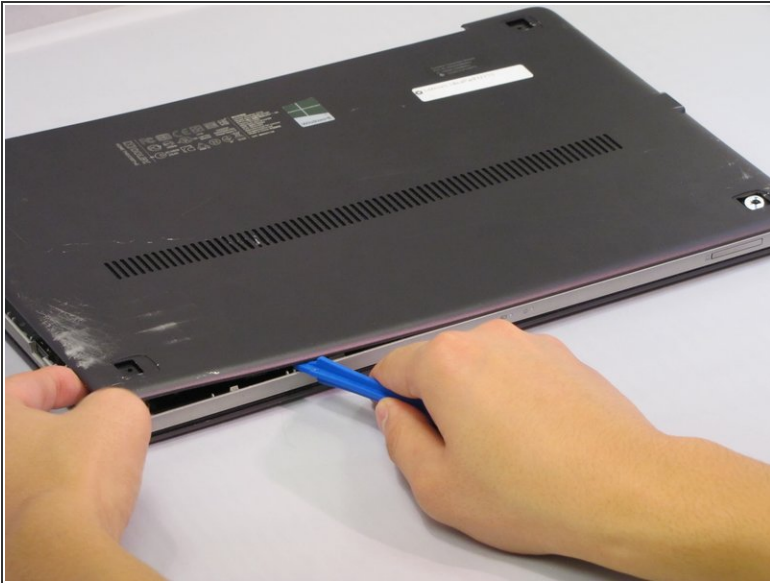
- Flip the device over so the bottom panel is facing up.
- Remove the rubber feet by pinching and pulling in an upward motion.
- ⓘ The rubber feet are missing from this photo, but will be located within the red markups.

Step 2



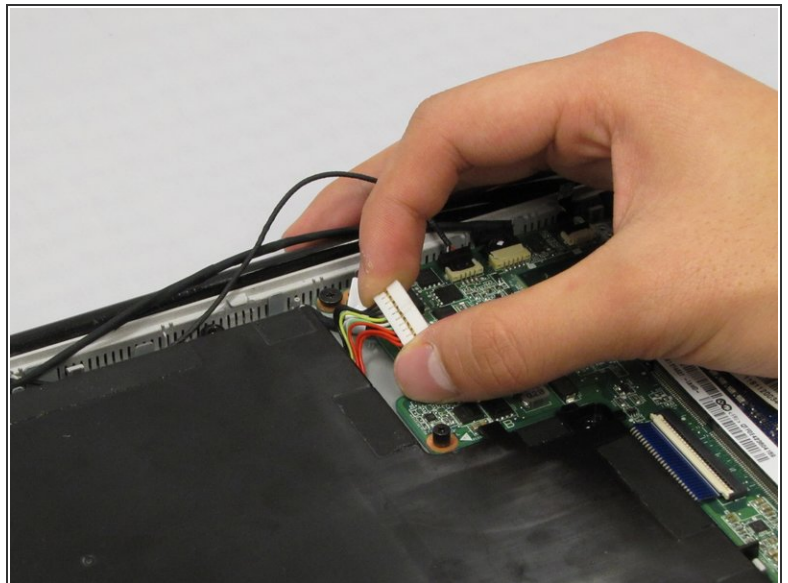
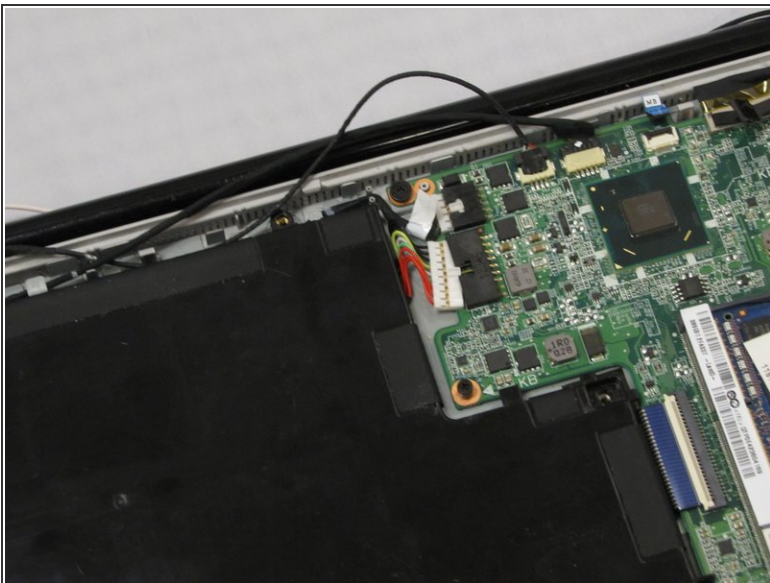
- Remove the 4 screws securing the bottom panel to the device.
- ⓘ The screws are missing from this device and are not pictured. They will be located under the rubber feet within the red markups.

Step 3



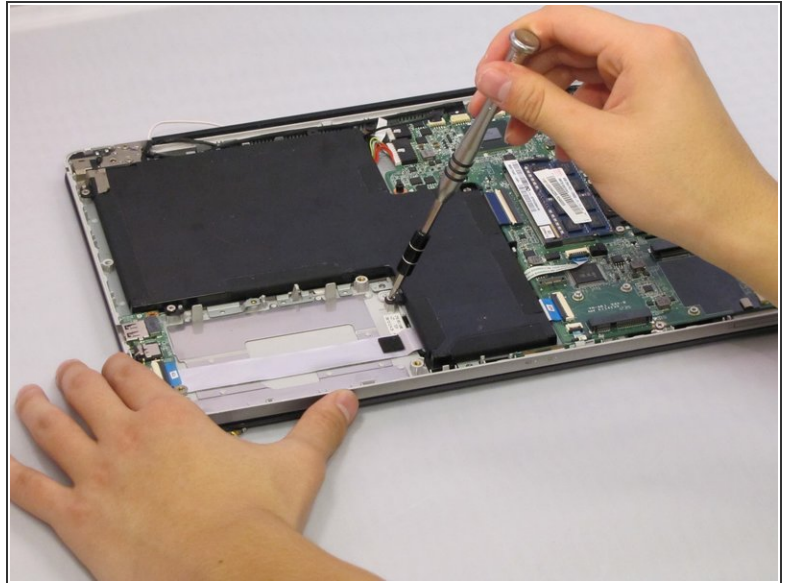
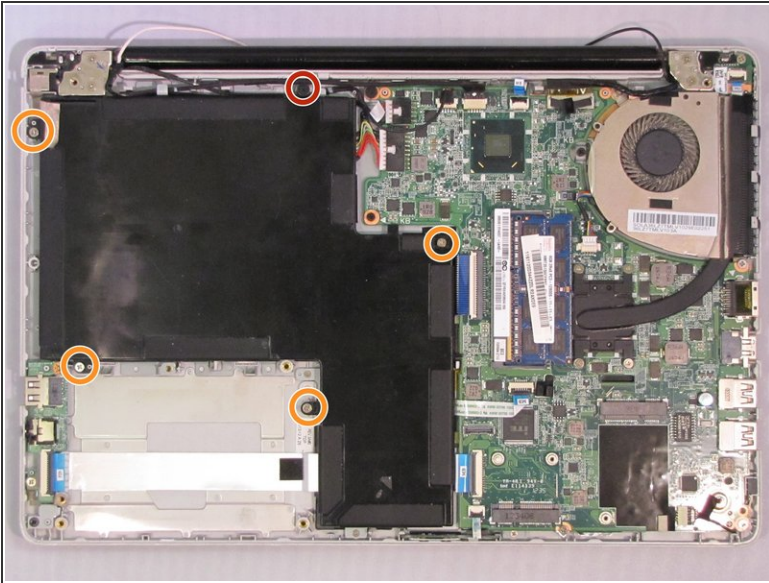
- Place the plastic opening tool between the bottom panel and device.
- Pry around the device's outer edge until the bottom panel is no longer attached.
- Lift the bottom panel up and away from device.

Step 4



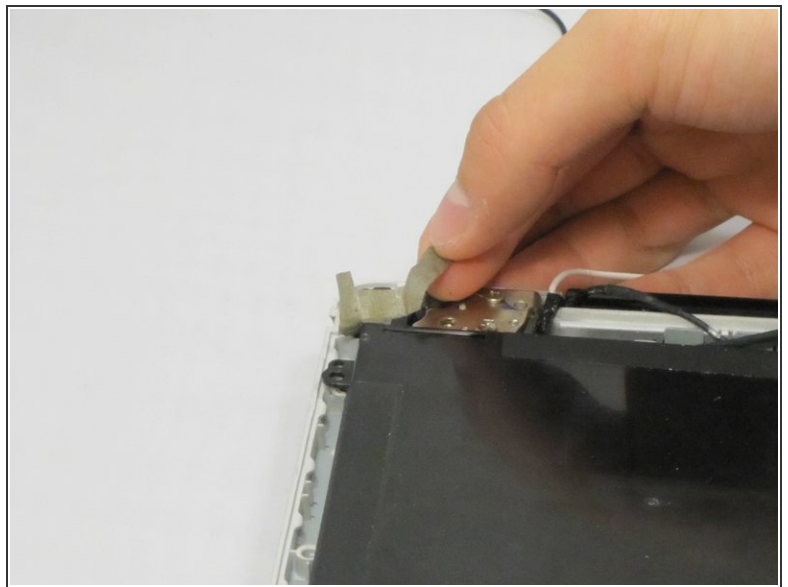
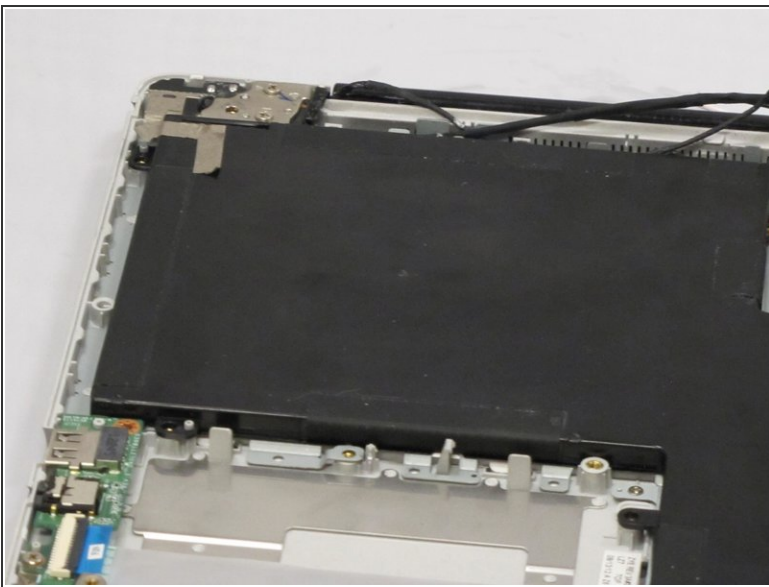
- Unplug the Battery from the circuit board by carefully prying the connector from its housing.

Step 5



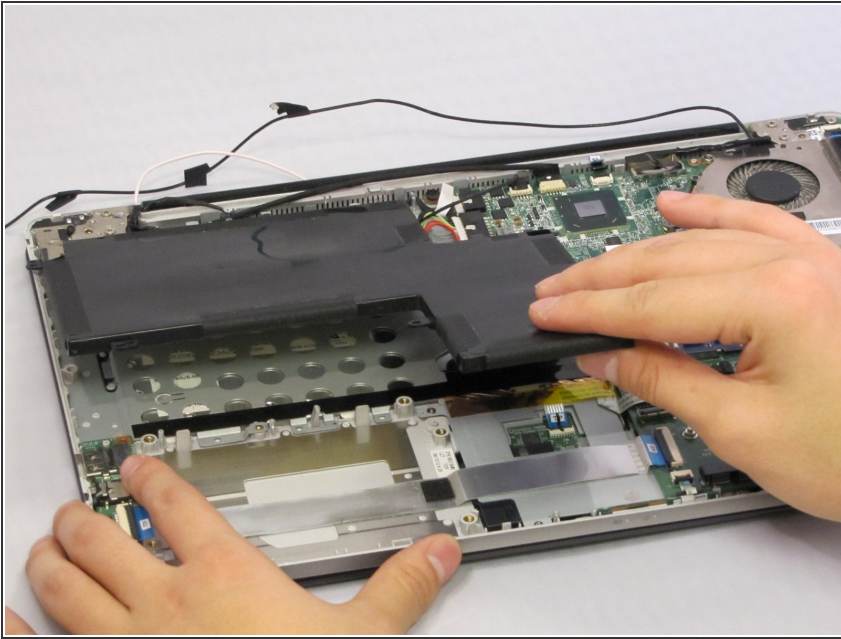
- Remove the 5.6 mm Screw with the PH1 screwdriver.
- Remove the 4.6 mm screws with the PH1 screwdriver.

Step 6



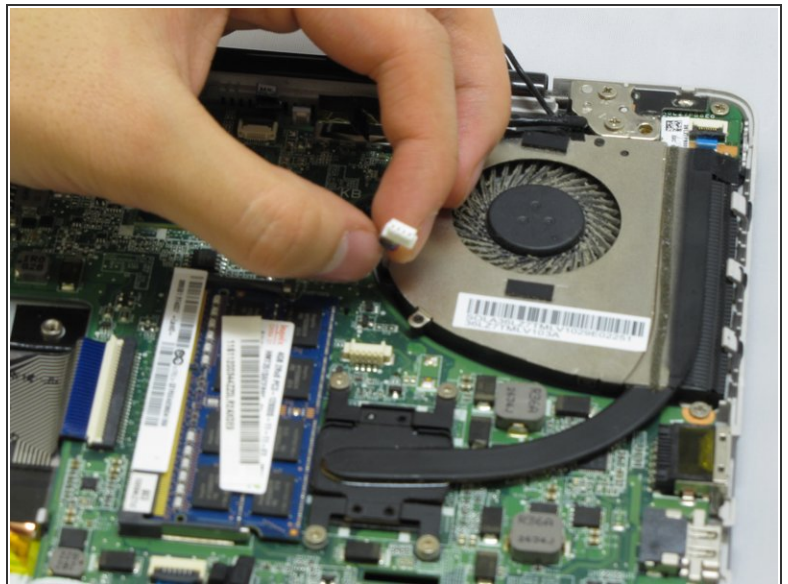
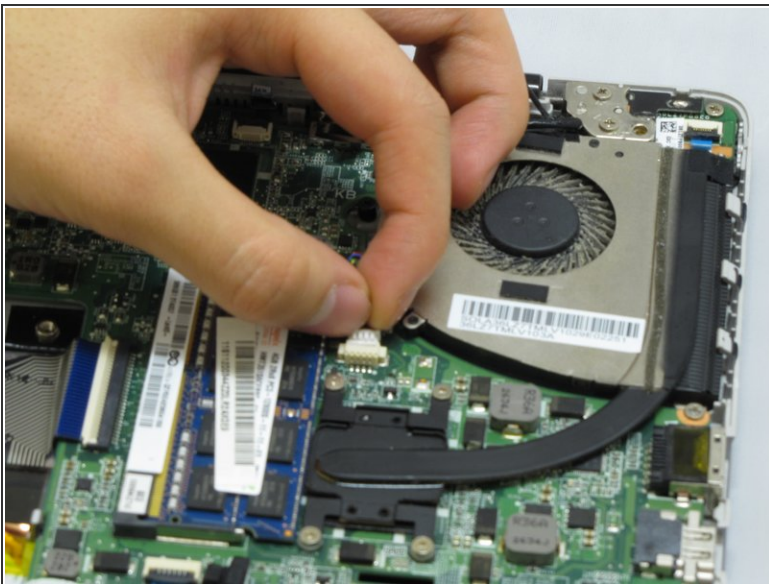
- Lift the strip tape away from the battery, being careful not to completely remove it.

Step 7



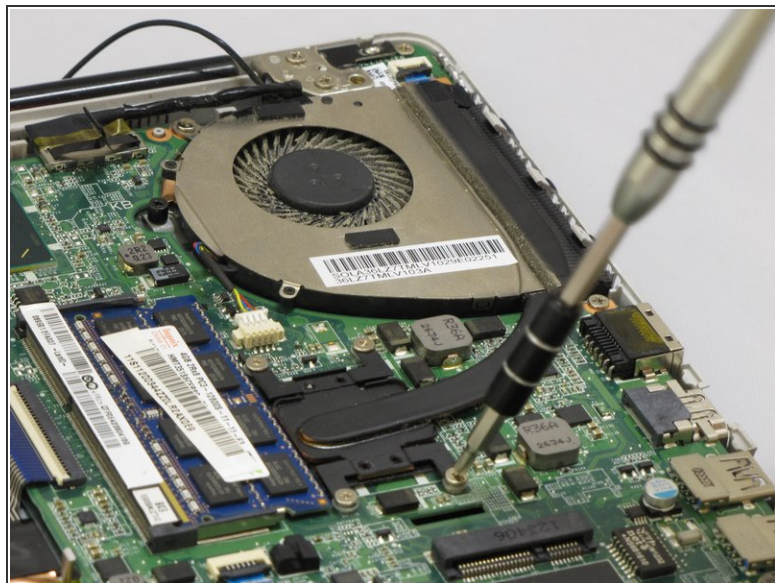
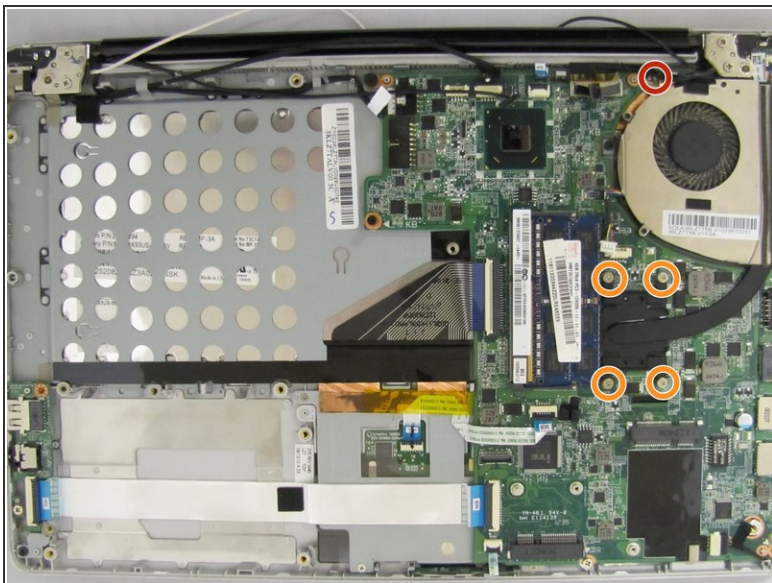
- Remove the battery by lifting up and away from device.

Step 8 — Fan



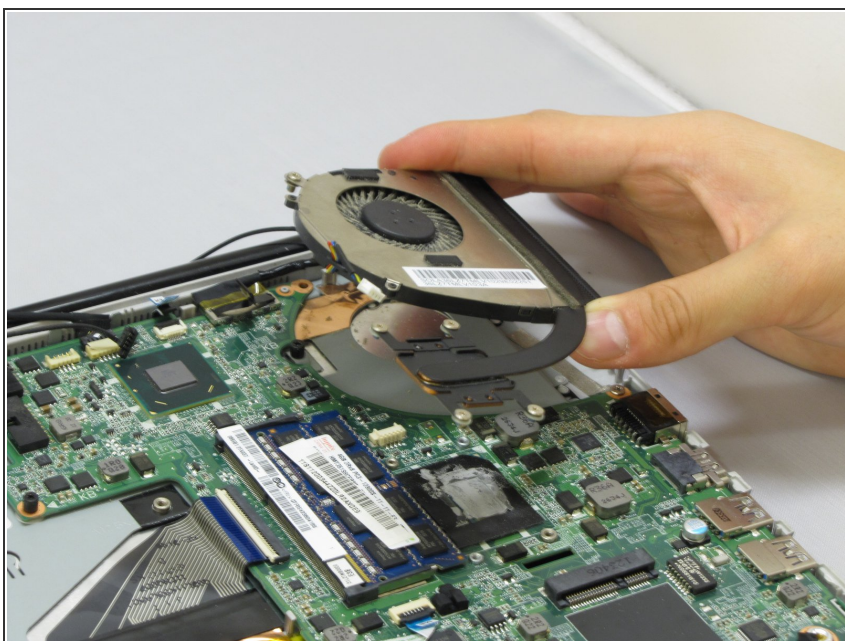
- Unplug fan by pinching the connector and pulling it away from its housing.

Step 9



- Unscrew 5.1 mm screw using PH1.
 - Unscrew the four 3.6 mm screws using PH1.
- i** These five screws are attached to the black plate with rubber stoppers. You will be able to loosen them from the circuit board, but they will stay attached.

Step 10



- Remove fan by lifting up and away from device.

To reassemble your device, follow these instructions in reverse order.