



Dell Inspiron Mini 10 Keyboard Replacement

The keyboard is an input component for the device.

Written By: Danielle Jarecki



INTRODUCTION

This guide will take you through how to remove the keyboard for cleaning or replacing.



TOOLS:

- [iFixit Opening Tools](#) (1)
 - [Spudger](#) (1)
 - [Phillips #0 Screwdriver](#) (1)
-

Step 1 — Battery



- ⚠ To prevent injury and loss of data, ensure the device is turned off.
- Slide the release latches out toward the edges to unlock the battery.

Step 2



- Remove the battery by pulling it up and out.

Step 3 — Keyboard



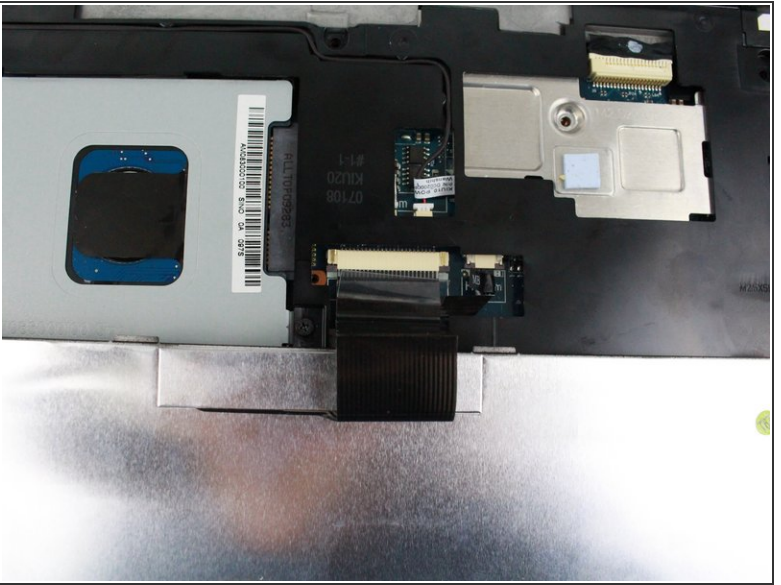
- Remove the three 8mm Philips 0 screws securing the keyboard.

Step 4



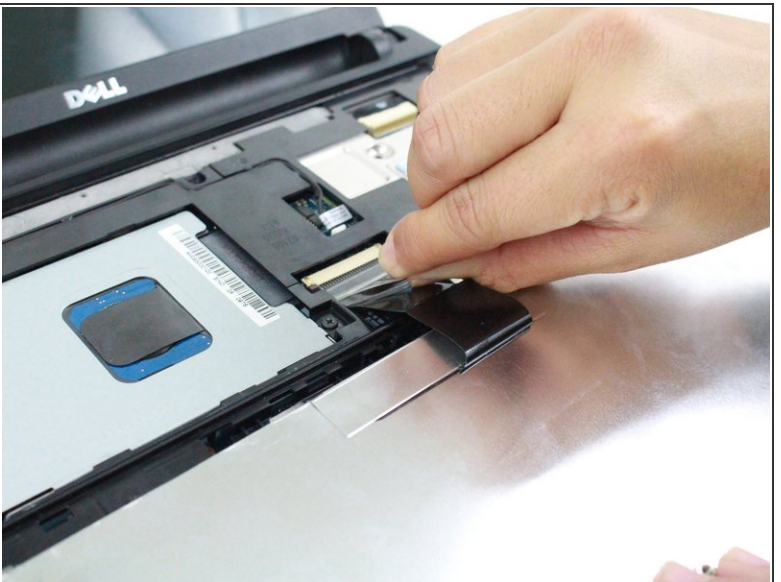
- Turn over the device and open the display.
- Gently pry open the keyboard with the plastic opening tool, working under the edges to release the clips.

Step 5



 Lift the keyboard off of the support bracket carefully since it is still connected by a ribbon cable.

Step 6



- Push the clips out on either side of the ribbon cable to release it.
- Gently disconnect the ribbon cable by pulling on the clear tab.
- Remove the keyboard.

This document was generated on 2020-11-26 11:08:42 AM (MST).

To reassemble your device, follow these instructions in reverse order.