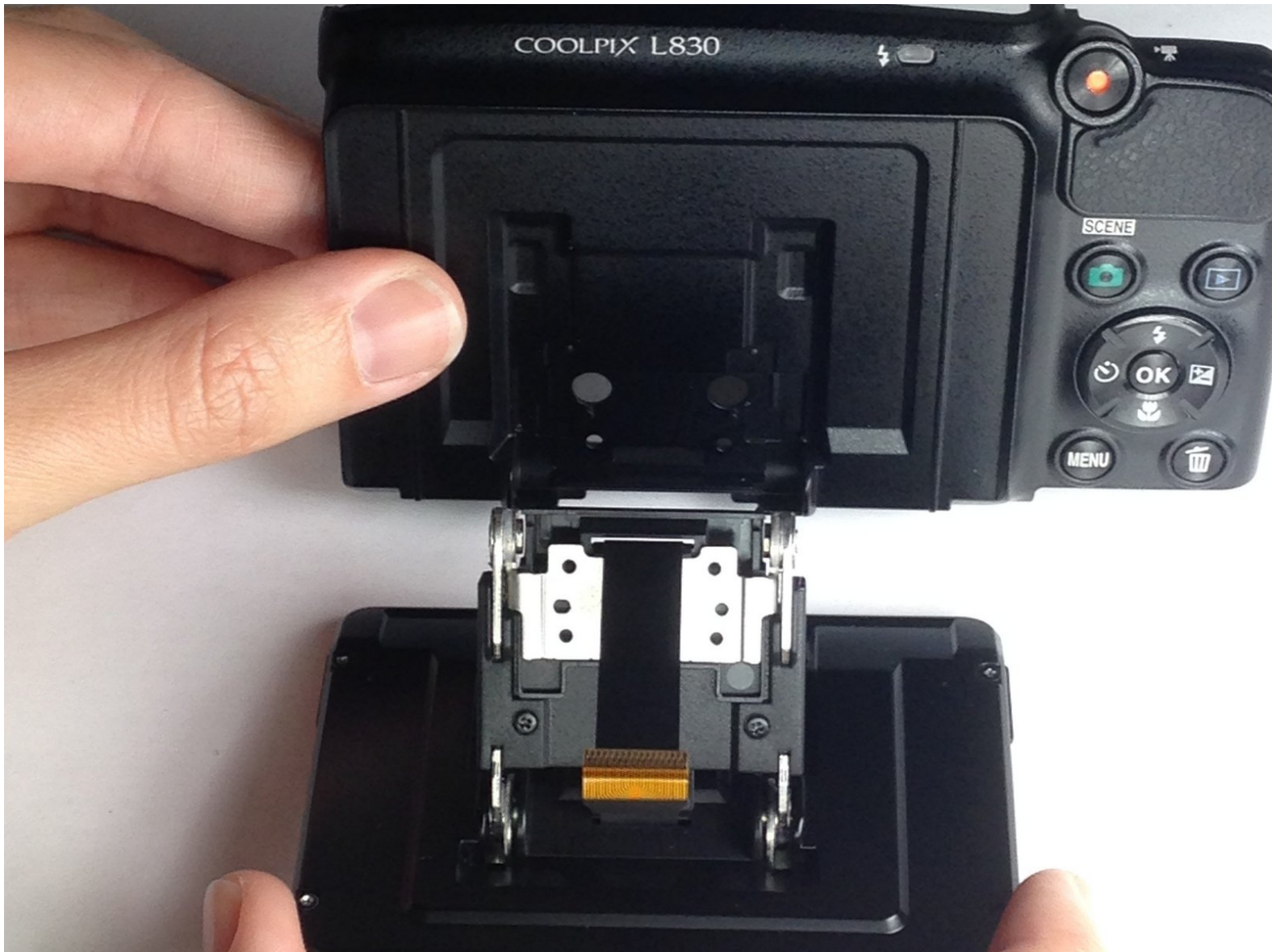




Nikon Coolpix L830 LCD Monitor Connecting Arm Replacement

This guide will teach you to replace the LCD Monitor Connecting Arm in a Nikon Coolpix L830 camera.

Written By: Alex Delony



This document was generated on 2020-11-20 08:28:04 AM (MST).

INTRODUCTION

This guide describes the steps necessary to remove and replace the LCD Monitor Connecting Arm of a Nikon Coolpix L830 camera.

TOOLS:

- [Phillips #000 Screwdriver](#) (1)
 - [iFixit Opening Tools](#) (1)
 - [Tweezers](#) (1)
-

Step 1 — Back Casing



- Use a Phillips #000 screwdriver to unscrew the two 3.0mm Phillips screws located on the side of the camera with the HDMI port.
- ❗ The HDMI port side will be on the left if you are looking at the back of the camera with the LCD monitor.
- ❗ One screw is located under the gray flap.

Step 2



- Unscrew the five 3.0mm Phillips #000 screws that are located on the bottom side of the camera.

Step 3



- Unscrew the 4.0mm Phillips #000 screw located underneath the grey flap on the side of the camera with the "DC IN 5.0 V" marker.
- ⓘ This will be on the right if you are looking at the back LCD monitor side.
- Unscrew the exposed 3.0mm Phillips #000 screw on the same side.

Step 4



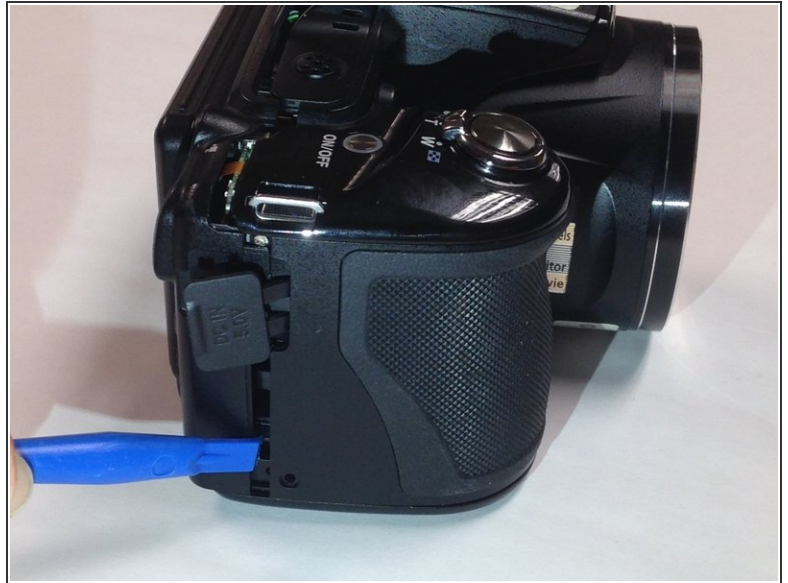
- Press the flash button to open the flash component.
- Remove the 3.0mm Phillips #000 screw located directly in-between the two arms.

Step 5



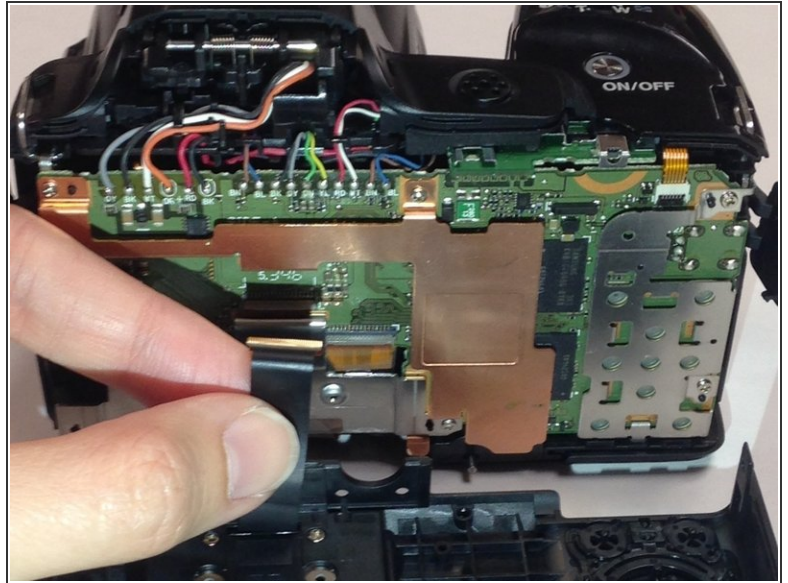
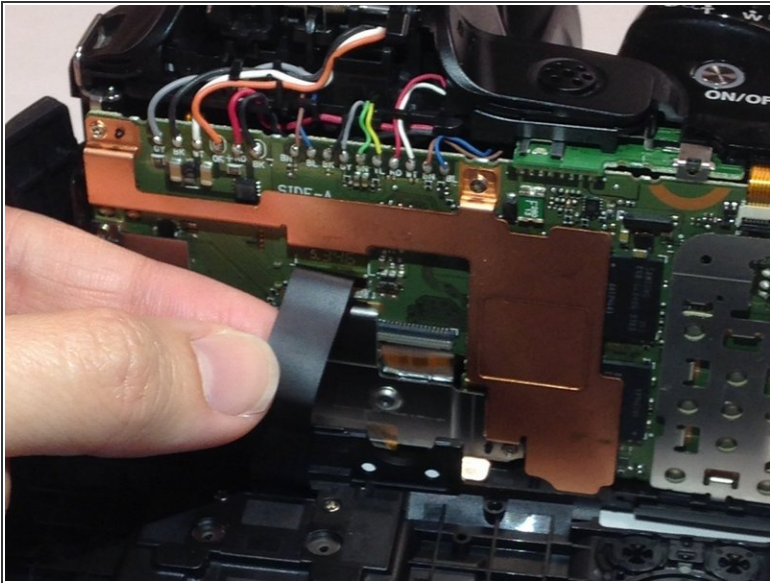
- Open the LCD monitor to reveal two 2.0mm Phillips screws.
- Remove the 2.0mm Phillips #000 screws.

Step 6



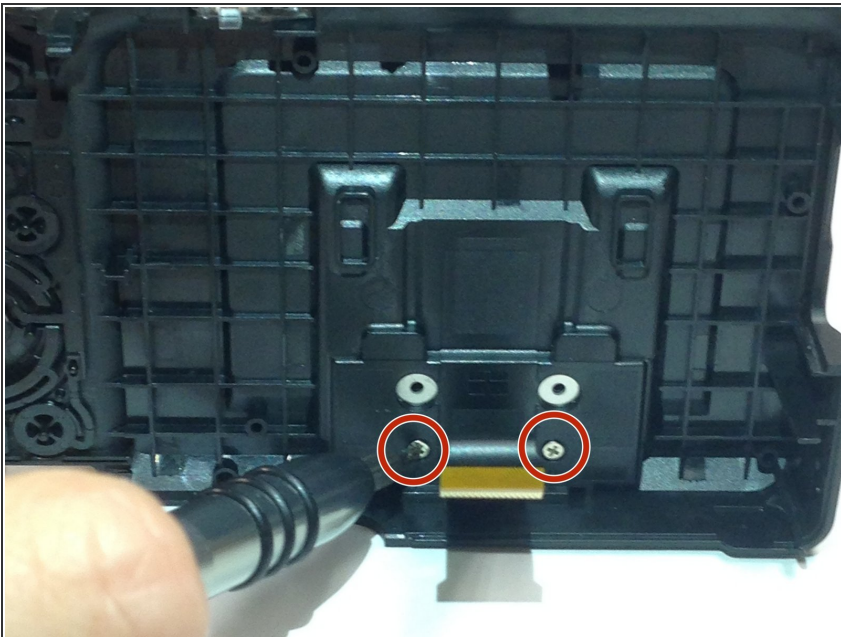
- ① Make sure to open the plastic grey flaps on either side of the camera before proceeding with this step.
- Insert a plastic opening tool between the back and front surface components of the camera.
- Wiggle the plastic opening tool backwards and forwards along the top edge until the back surface comes off.
- ⚠ Remove the back casing gently to not damage the LCD ribbon connector or inner camera components.

Step 7



- Gently pull the LCD ribbon connector up to allow the back casing to be completely removed.

Step 8 — LCD Connecting Arm



- On the inside of the back cover, remove the two 2.0mm Phillips screws surrounding the connecting cable.

Step 9



- Gently pull the ribbon connector in order to remove the complete LCD Monitor Connecting Arm.

To reassemble your device, follow these instructions in reverse order.