



HP Mini 110-3131dx Keyboard Bezel Replacement

How to replace the keyboard bezel in an HP Mini 110-3131dx.

Written By: aarondcollege





TOOLS:

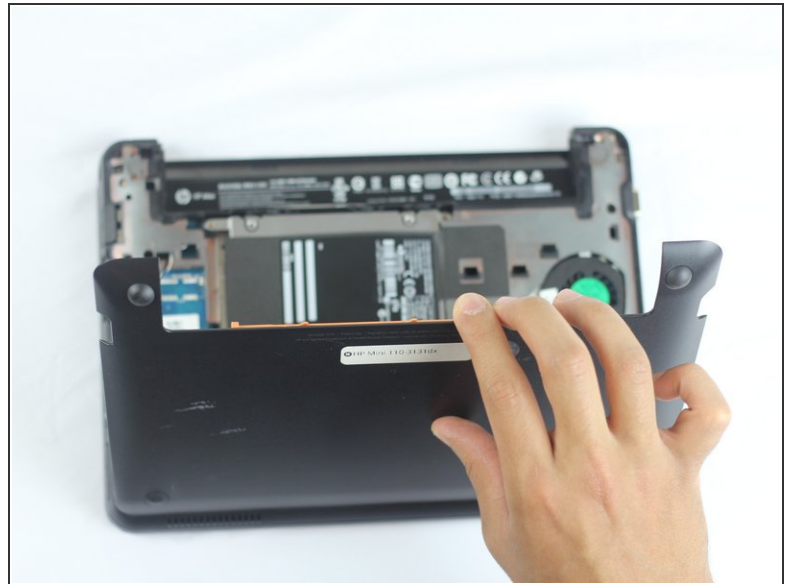
- [iFixit Opening Tool](#) (1)
 - [Phillips #1 Screwdriver](#) (1)
-

Step 1 — Battery



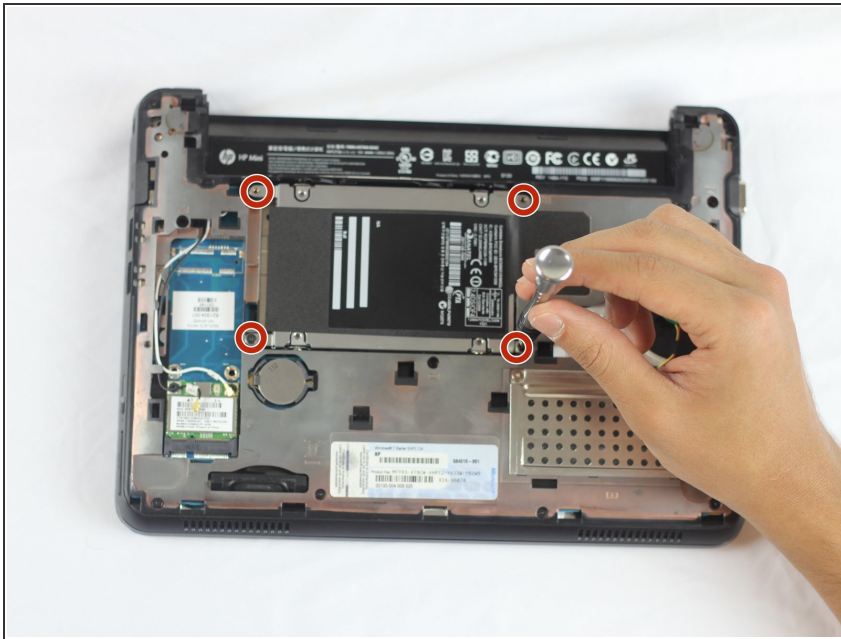
- Power off the laptop before trying to remove the battery.
- Turn the laptop upside down, and locate the sliding tabs on the battery.
- Slide both tabs in an inward direction, then slide the battery away from the laptop.

Step 2 — Back Cover



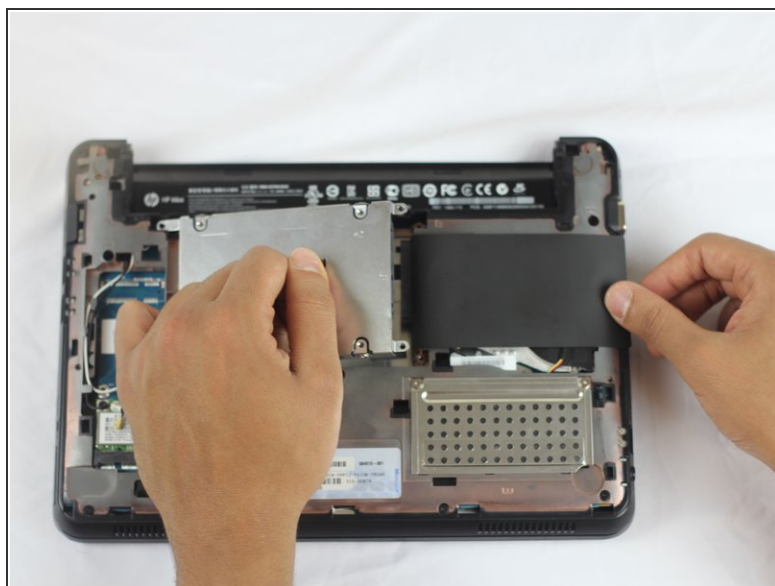
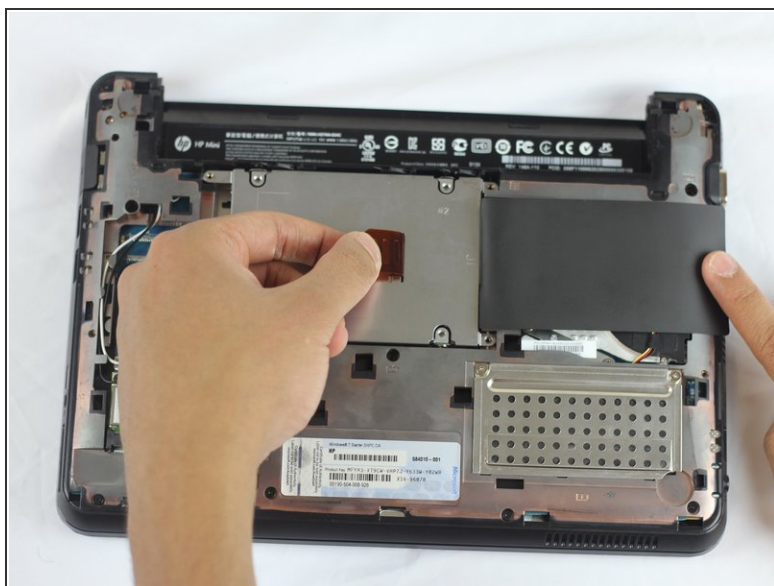
- To remove the bottom cover pull the orange tab to the right until it clicks.
- Carefully disconnect the clips as you lift the bottom cover.

Step 3 — Hard Drive



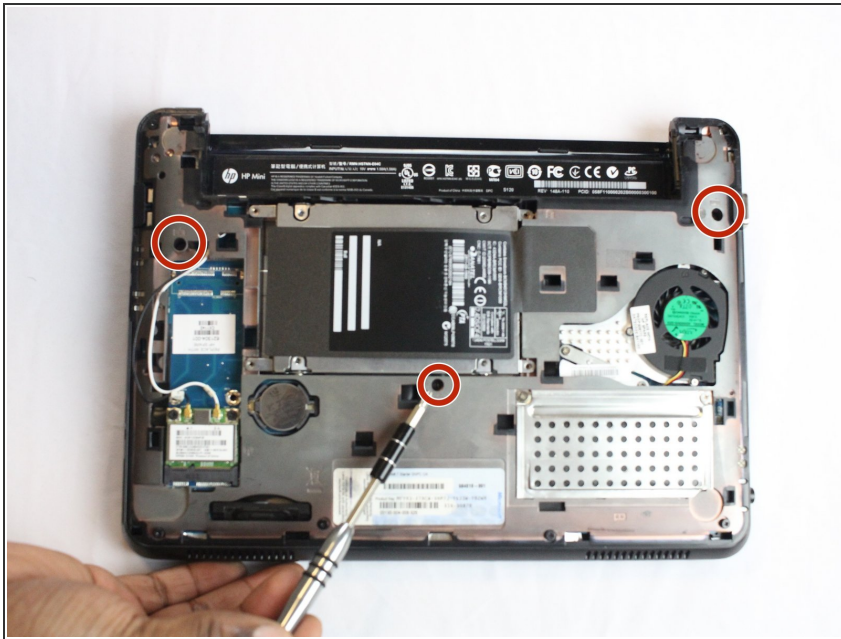
- Remove the four screws holding down the hard drive using a Phillips #1 screwdriver.

Step 4



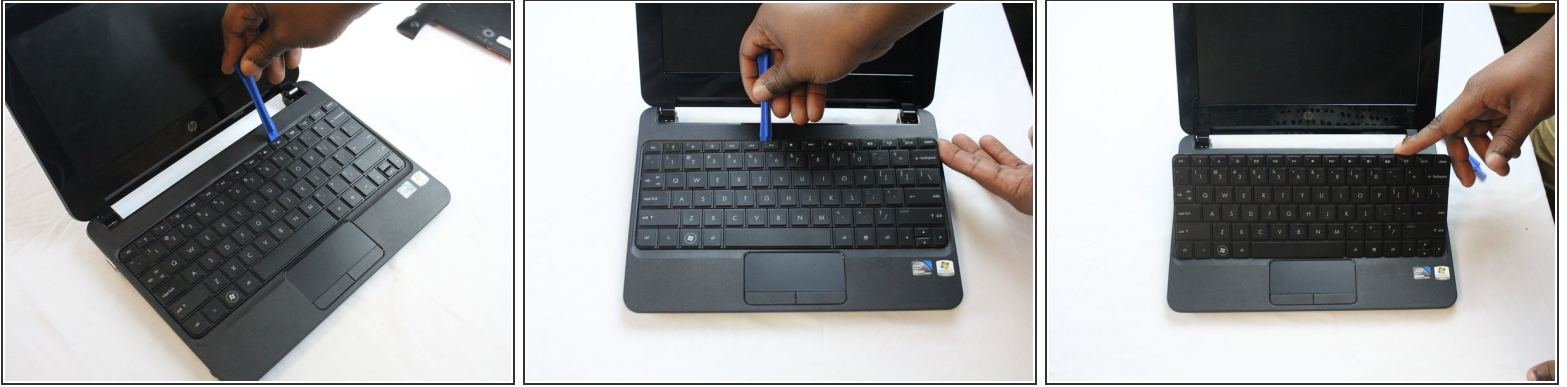
- Lift the black flap covering the hard drive then slide it towards the left using the orange tab until it's released from its receptacle.
- Pull the hard drive out of the laptop.
- ⓘ Put the hard drive in an anti-static bag to decrease the likelihood of harming it with static electricity.

Step 5 — Keyboard



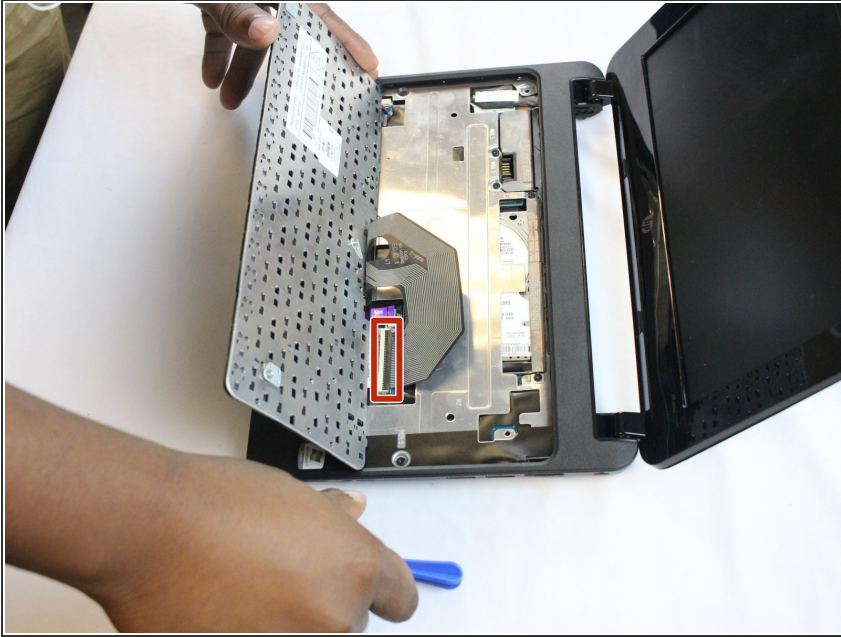
- Remove the three black screws marked by the keyboard symbol using a Phillips #1 screwdriver.

Step 6



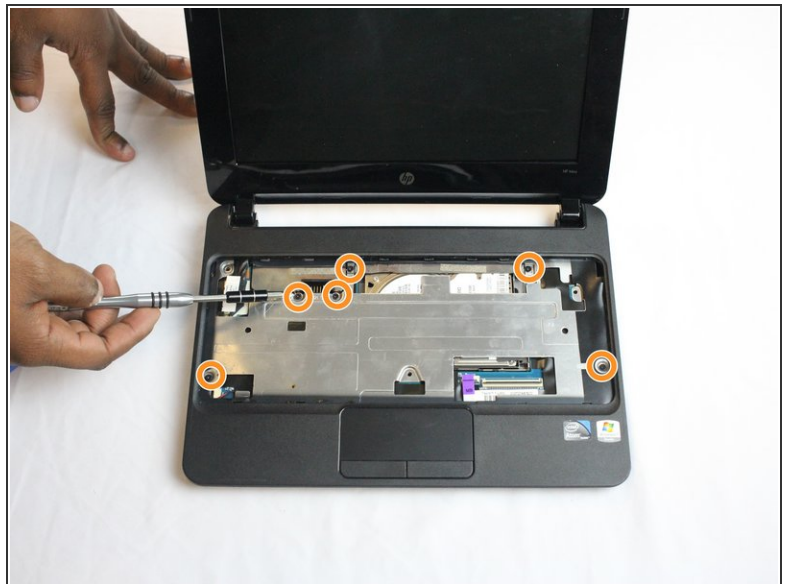
- Turn the laptop upright and open it.
 - Disconnect the clips located around the perimeter of the keyboard.
 - Slide the iFixit opening tool between the top edge of the keyboard and the plastic bezel.
 - ① Start either above the esc key or the delete key.
 - Pull the keyboard with your fingers until it comes out on both sides.
- ⚠ Be careful not to pull the keyboard out too fast. There is a fragile ribbon cable that attaches to the motherboard behind the keyboard.

Step 7



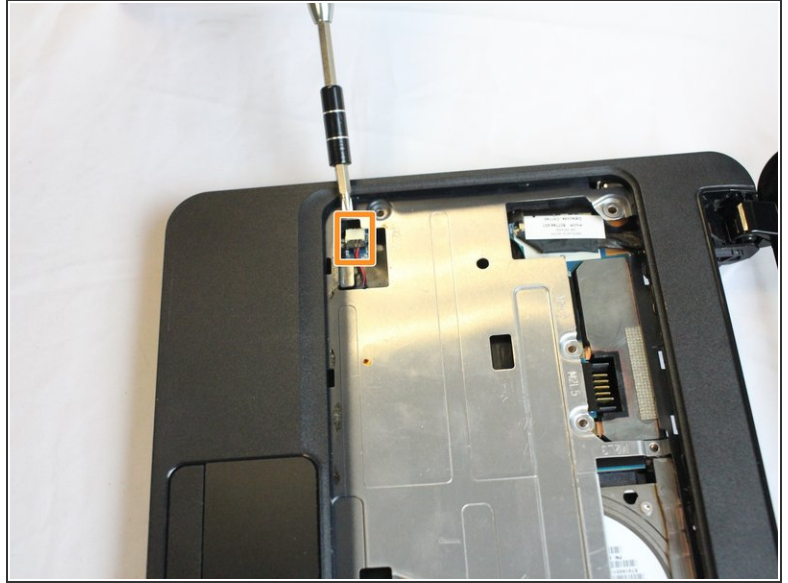
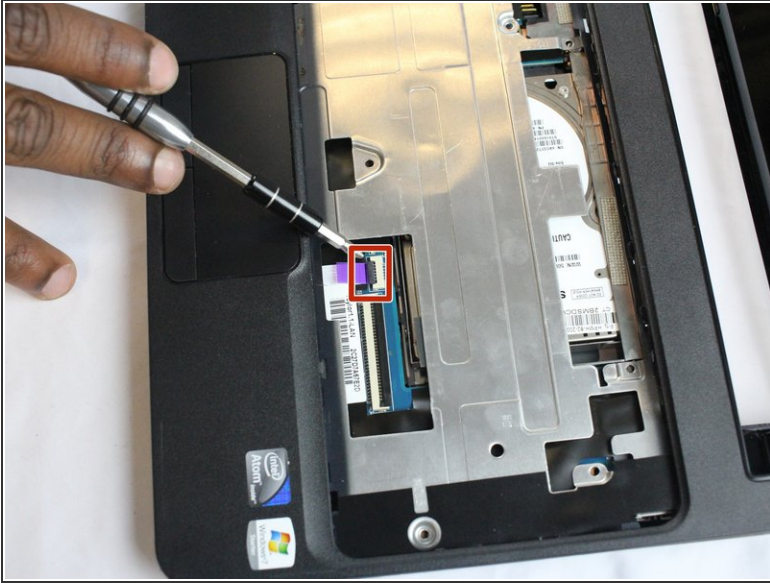
- Tilt the keyboard toward you to reveal the ribbon cable.
- Lift up the black tab on top of the keyboard ribbon cable to release the ribbon cable.
- Pull the ribbon cable out of its container.

Step 8 — Keyboard Bezel



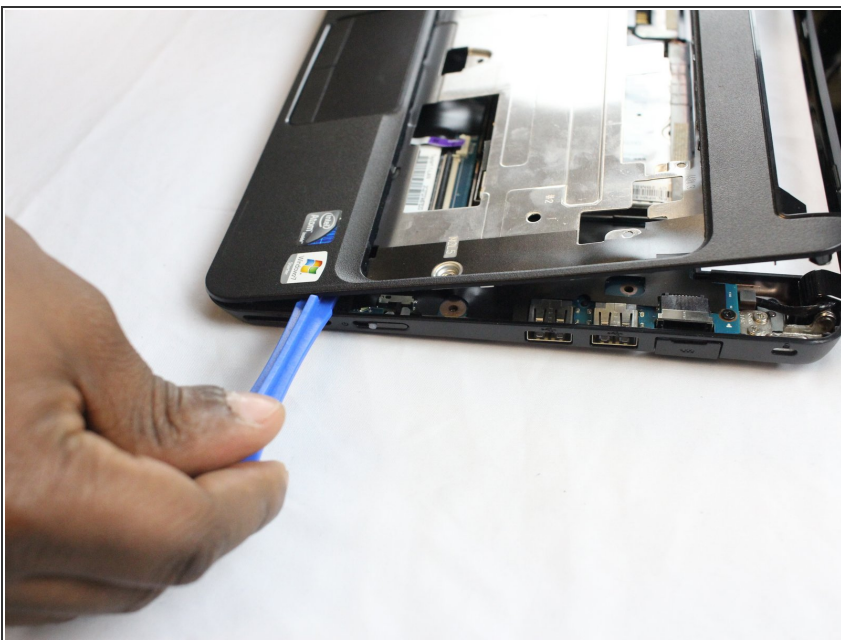
- Remove the six black screws around the perimeter of the laptop using a Phillips #1 screwdriver.
- Be sure to keep track of which screws go where as they are not all the same size.
- Flip the laptop over and remove the six black screws.

Step 9



- Using your fingernail or the iFixit opening tool, flip the black tab up to release the ribbon cable that connects the touchpad and motherboard.
- Disconnect the red and black wires from the motherboard on the left-hand side of the bezel using your fingernail or iFixit opening tool.

Step 10



- Lift the keyboard bezel from the back end and slide the iFixit opening tool around the perimeter of the bezel until it is fully released.

To reassemble your device, follow these instructions in reverse order.