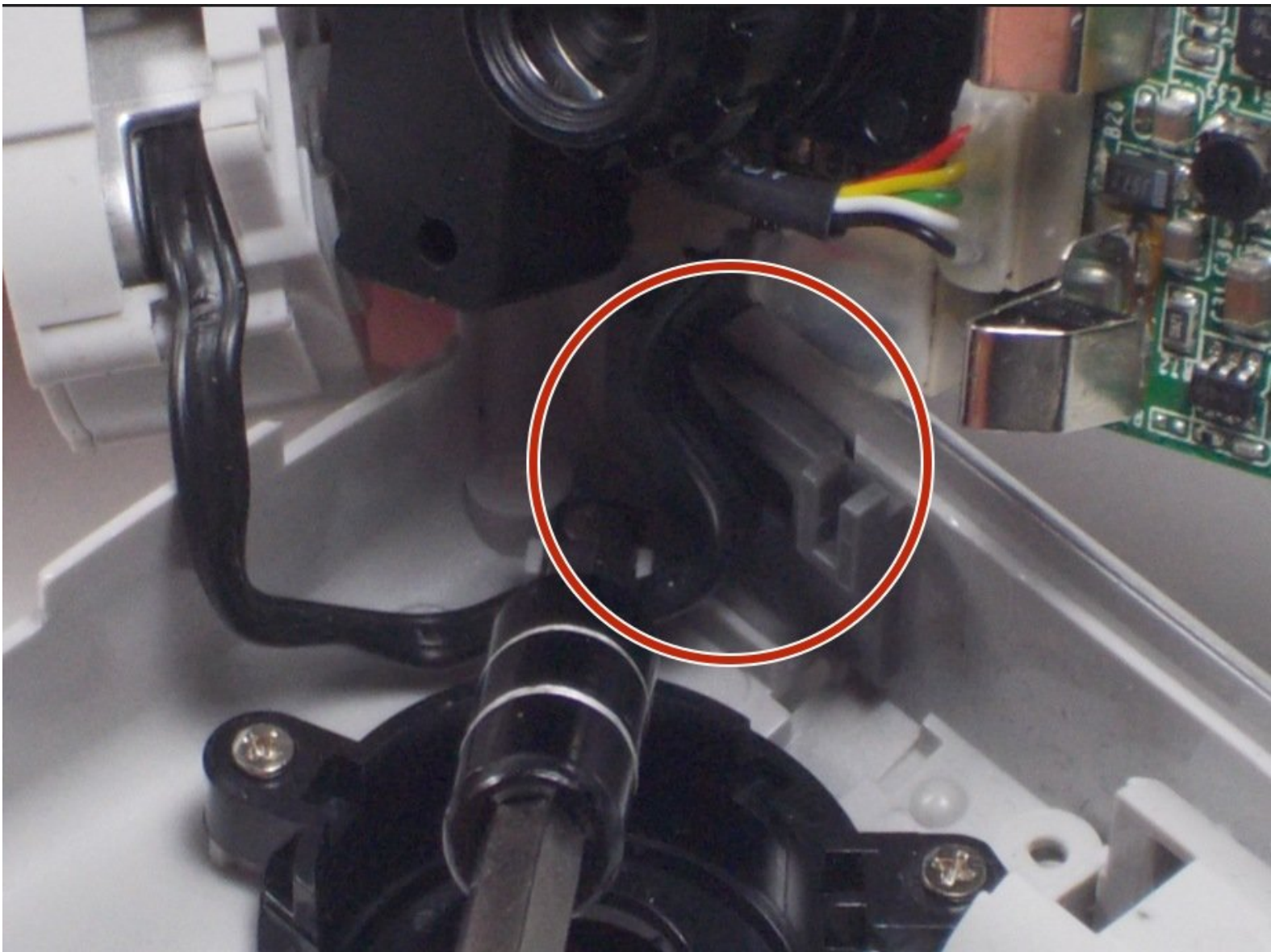




# Flip Video Ultra Power button Replacement

If the power button is stuck or otherwise not working the guide will walk you through it.

Written By: Nathaniel Ruf



## INTRODUCTION

This guide will walk you through on how to remove the power button and replace it. You will need the iFixit Opening Tool and the Phillips #1 Screwdriver. It should take no more than 15 minutes, if it takes more than that then you may have done something wrong.

---

### TOOLS:

- [Phillips #1 Screwdriver](#) (1)
  - [iFixit Opening Tools](#) (1)
-

## Step 1 — Power button



- Unlock the battery cover by sliding the switch to the unlock position.

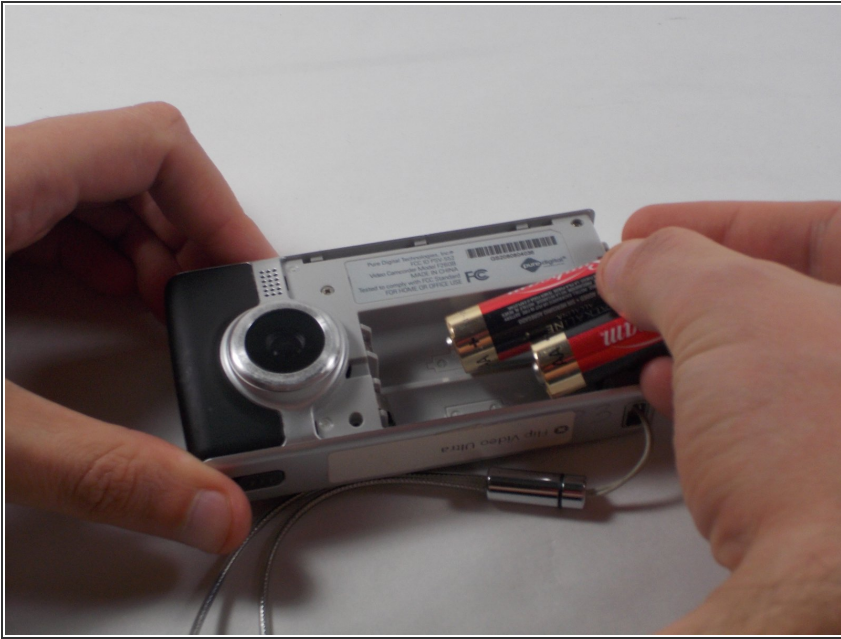
## Step 2



- Remove the battery cover by sliding it down the camera.

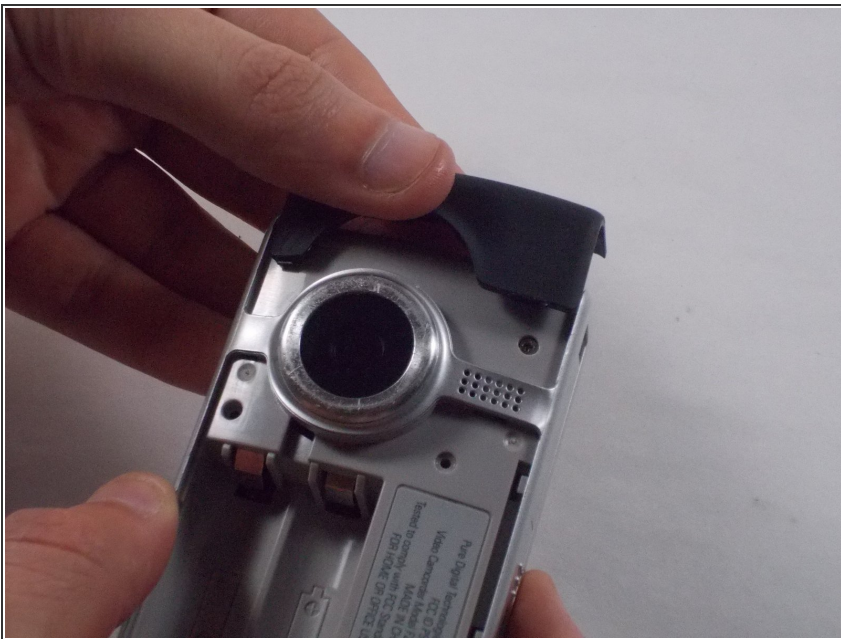


### Step 3



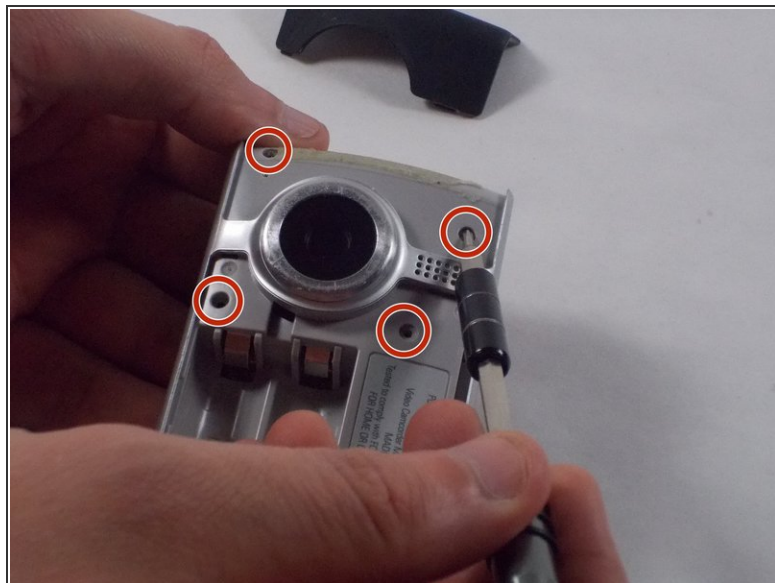
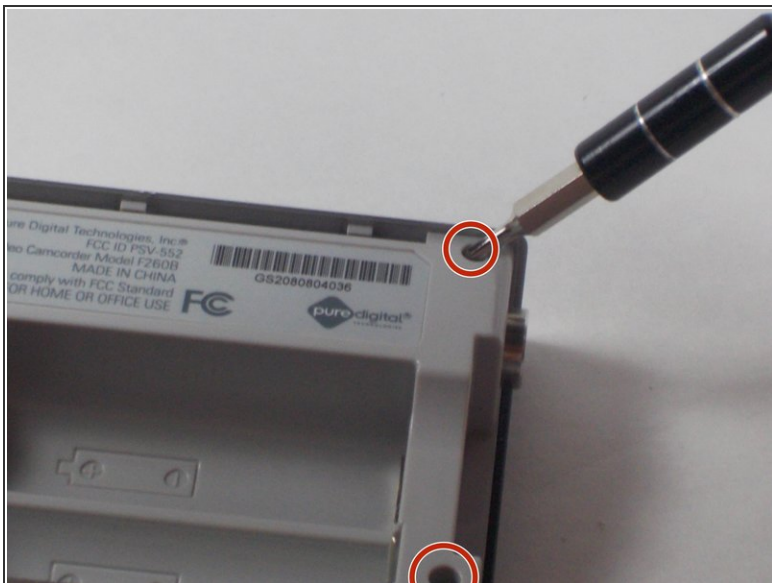
- Remove the batteries

### Step 4



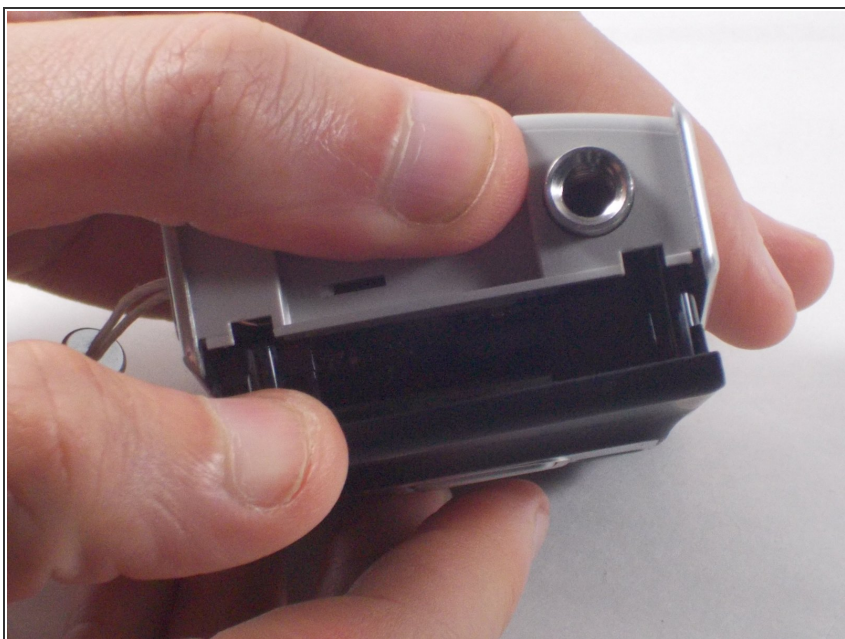
- Slide the black upper casing off from the device.

## Step 5



- Remove the six 1mm screws from the back and upper casing with the Phillips Head screwdriver.

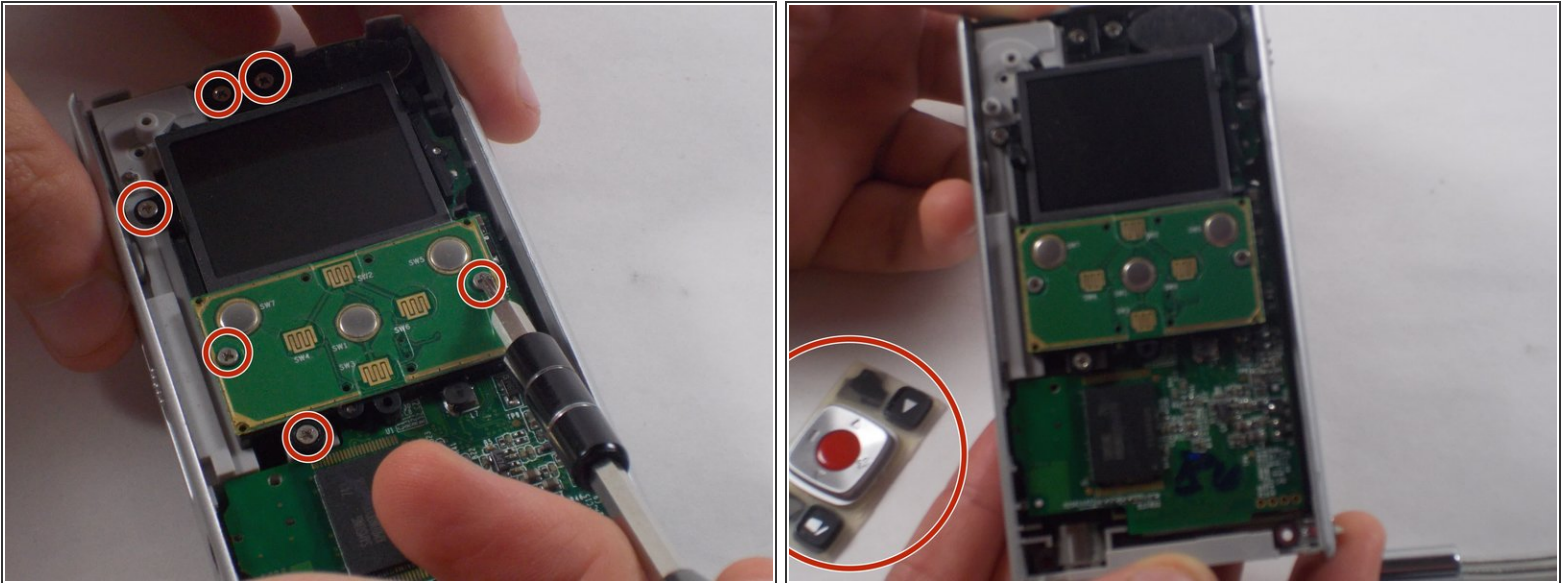
## Step 6



- Remove the top casing from the bottom to reveal the inner circuit board.



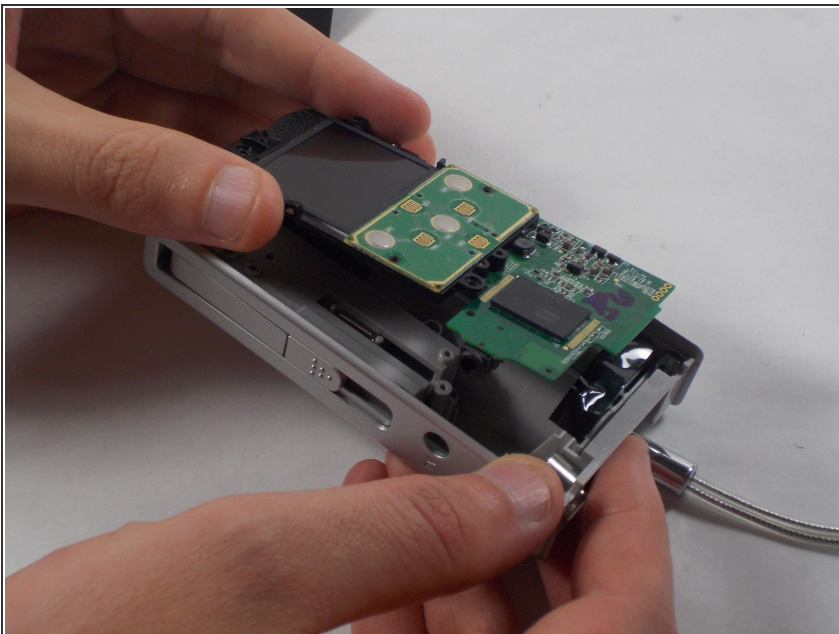
## Step 7



**i** When removing the back panel, the rubber buttons will become loose and likely fall off the board. This is normal and can easily be placed back on the board once finished.

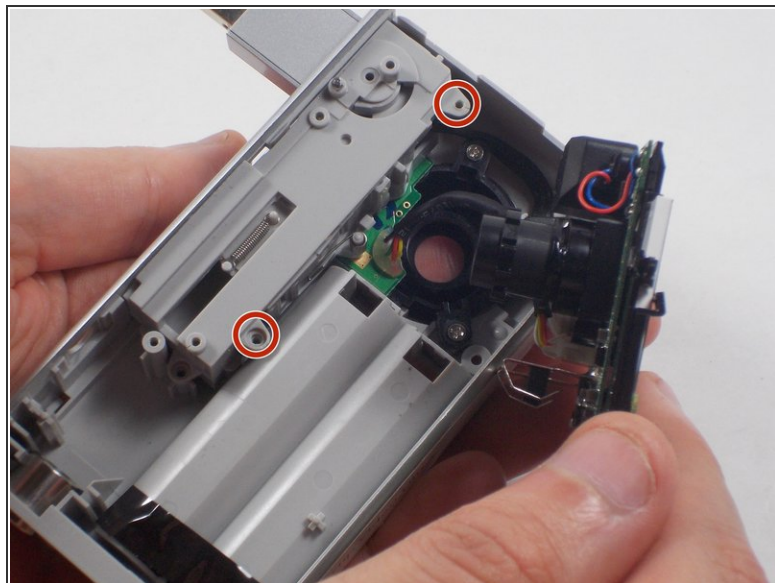
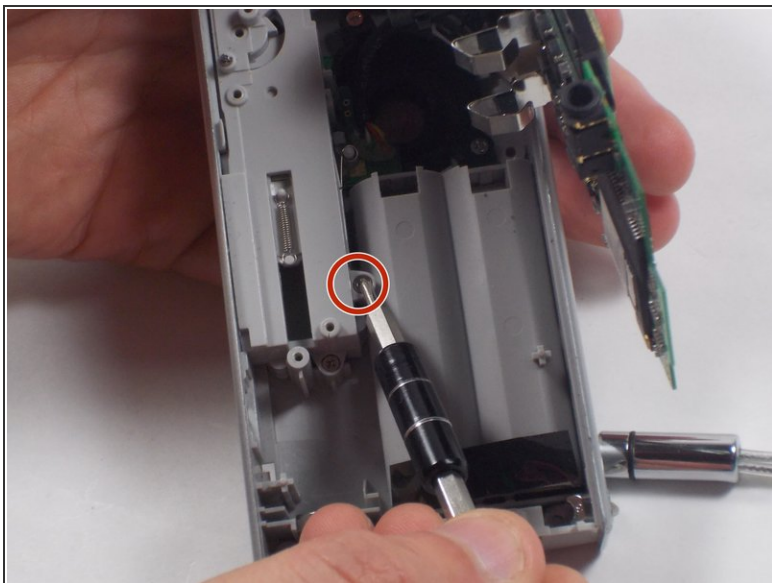
- Remove the six 1mm screws with the 1 Phillips head screwdriver.

## Step 8



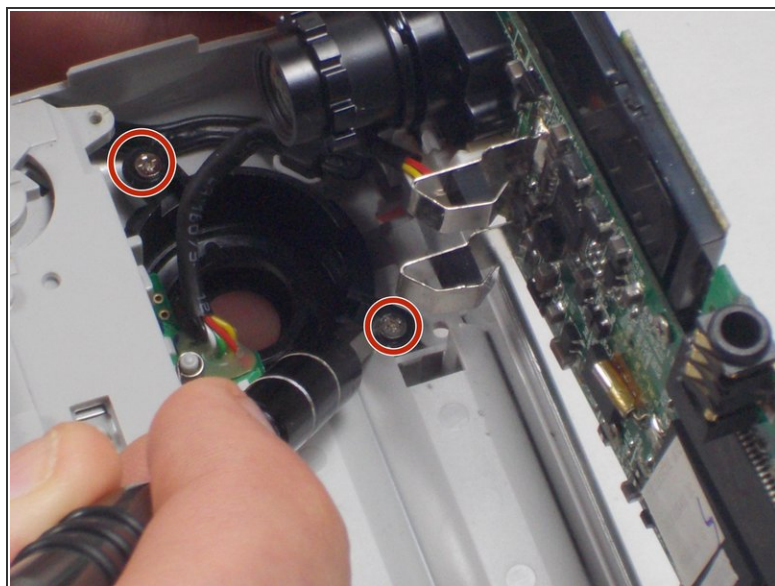
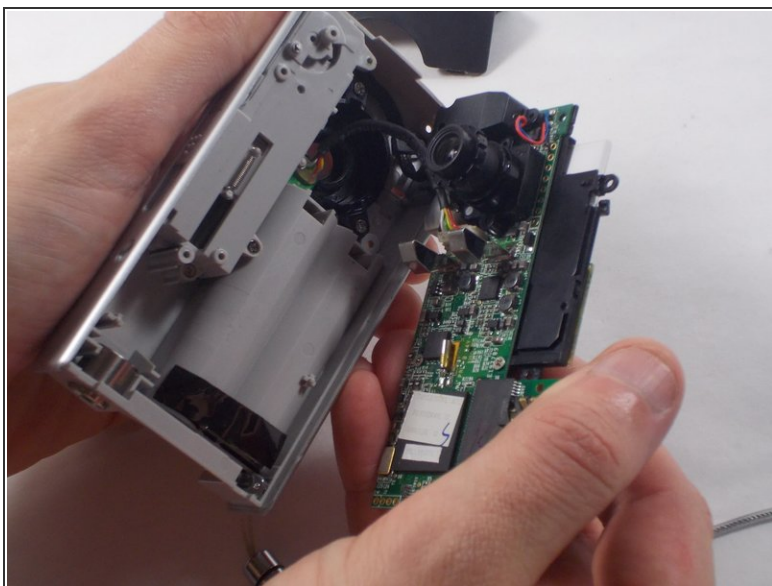
- Gently separate the circuit board from the casing.

## Step 9



- Unscrew the single 1mm screw from USB housing unit.

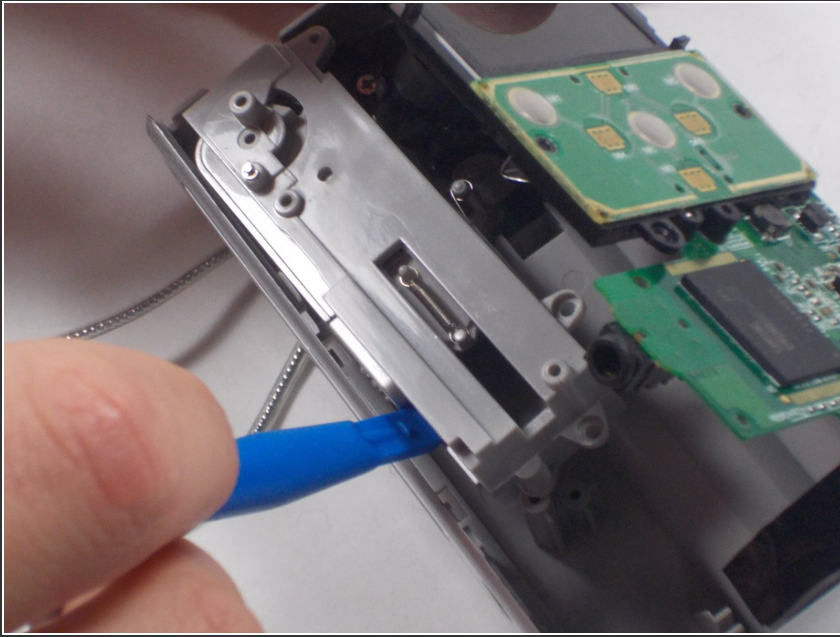
## Step 10



- Unscrew the 2 1mm screws and gently separate camera wires from plastic casing.

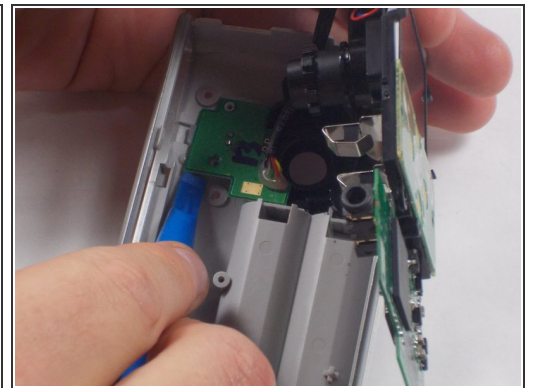
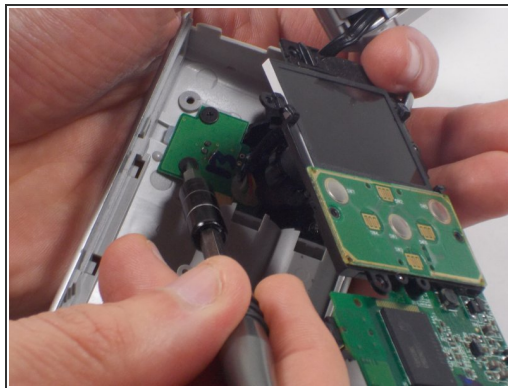
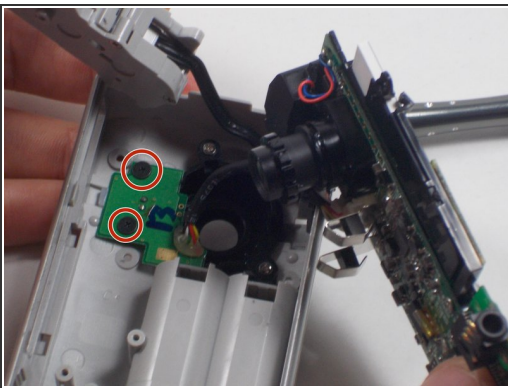


## Step 11



- Gently pry out the USB housing unit with the Ifixit Opening Tool.

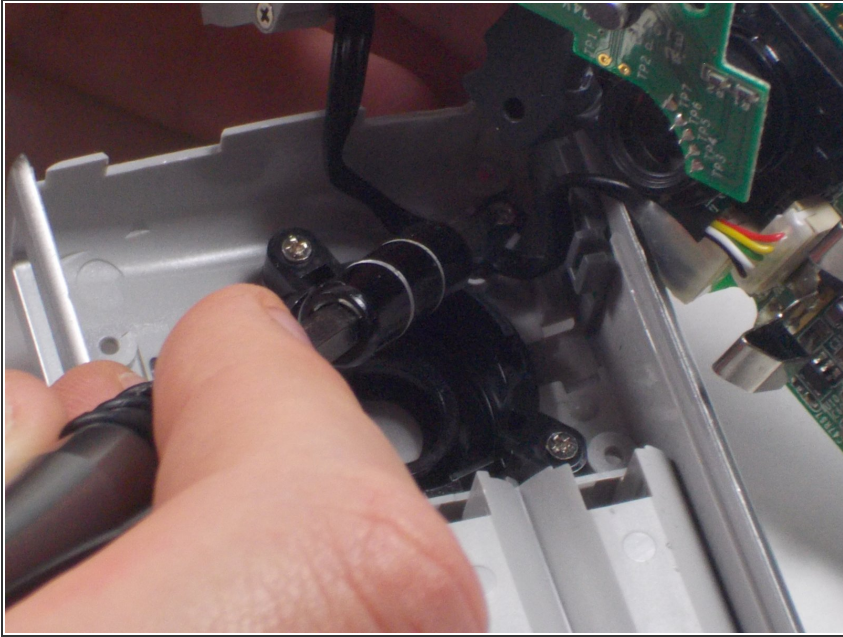
## Step 12



- Remove the two 1mm screws and separate the circuit board and camera from the plastic casing.



## Step 13



- Unscrew the camera housing unit from the plastic case.

To reassemble your device, follow these instructions in reverse order.