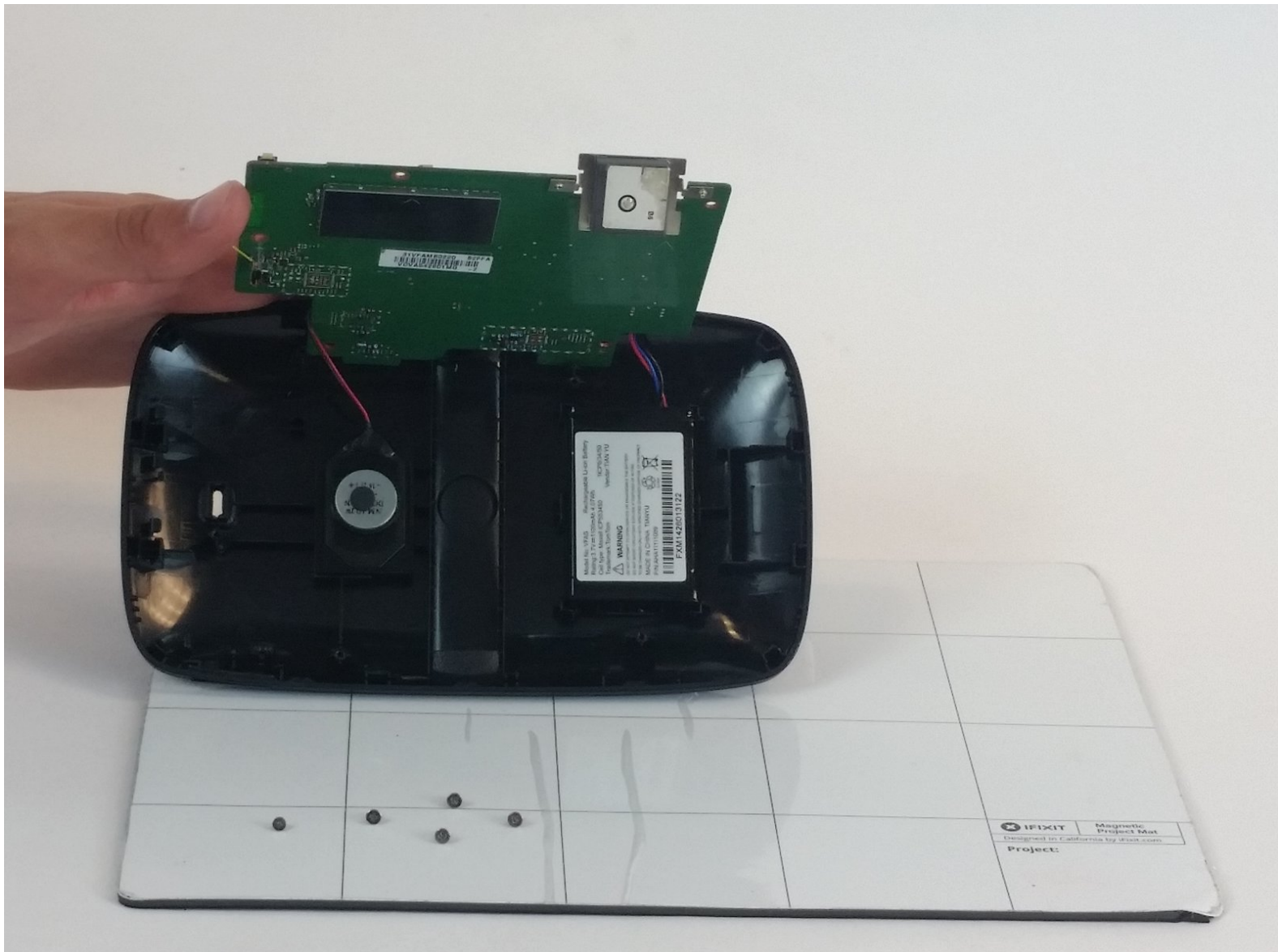




# TomTom Go 60 S Lithium Ion Battery Replacement

This replacement guide will help users remove and replace a faulty lithium ion battery.

Written By: Tomy Peralta



---

## INTRODUCTION

After removing the covering of the device, the main battery will be located underneath the motherboard. The purpose of this battery is to allow the device to operate at full capacity.

---

### TOOLS:

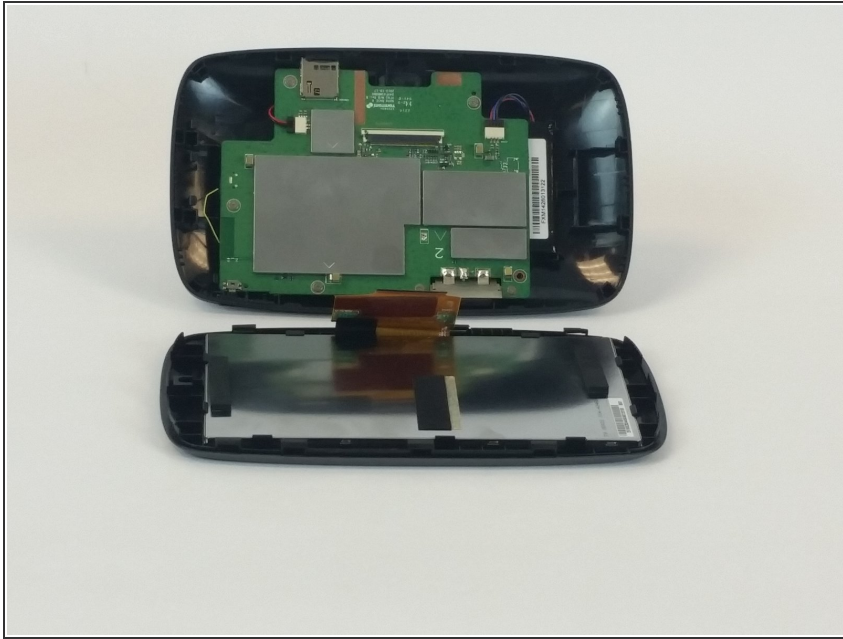
- [iFixit Opening Tools](#) (1)
  - [Phillips #000 Screwdriver](#) (1)
-

## Step 1 — Lithium Ion Battery



- Use the iFixit opening tool to pry open the TomTom Go 60 S. Start from a corner and drag the tool around the device.

## Step 2



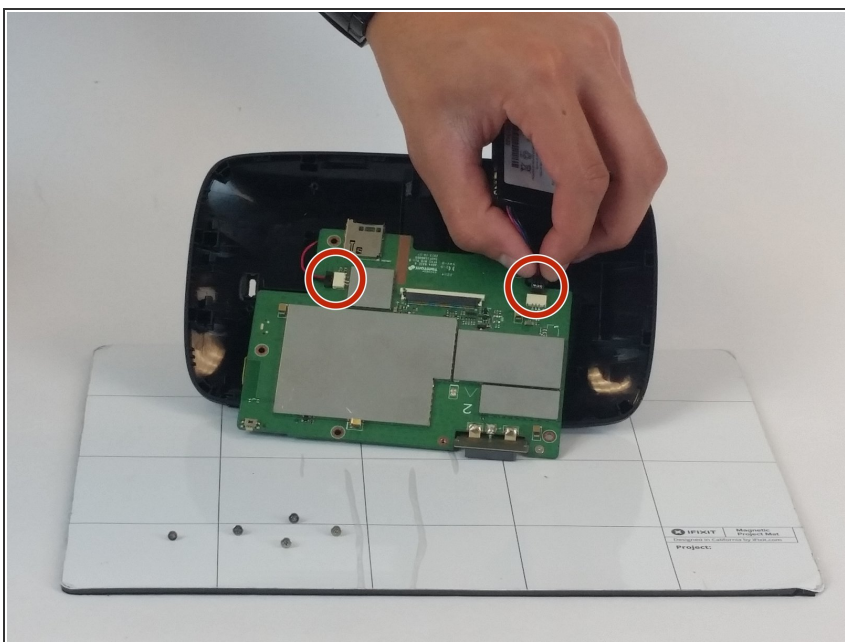
- Your device should now look like this. Make sure to disconnect the screen from the motherboard by removing the flap connecting both, so you have ample room to work on the device.

## Step 3



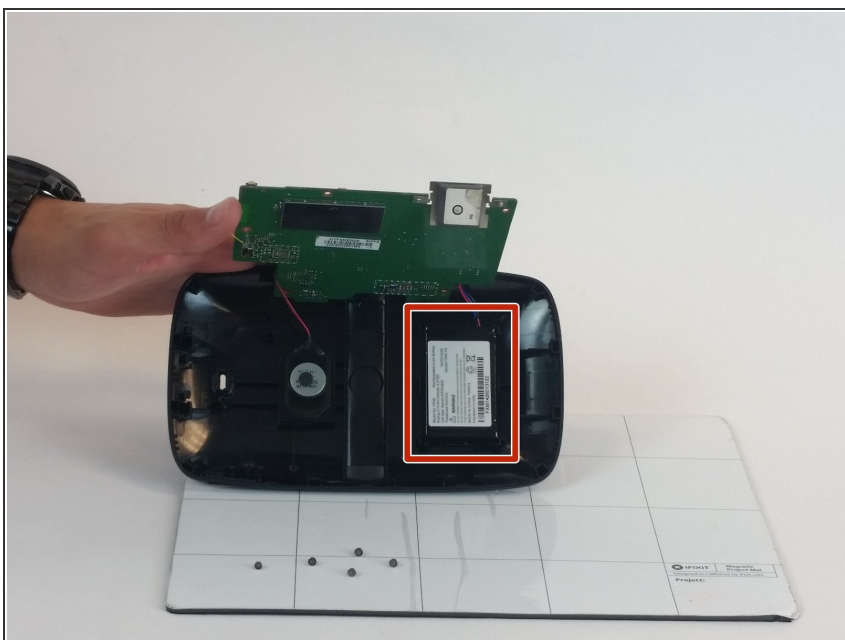
- Remove all the screws that are marked in the image with a Philips #000 screwdriver and over a magnetic work mat.

## Step 4



- Disconnect battery wires from motherboard, so that you can remove the Lithium-Ion battery.

## Step 5



- Detach from holster and replace Lithium-Ion battery.

To reassemble your device, follow these instructions in reverse order.