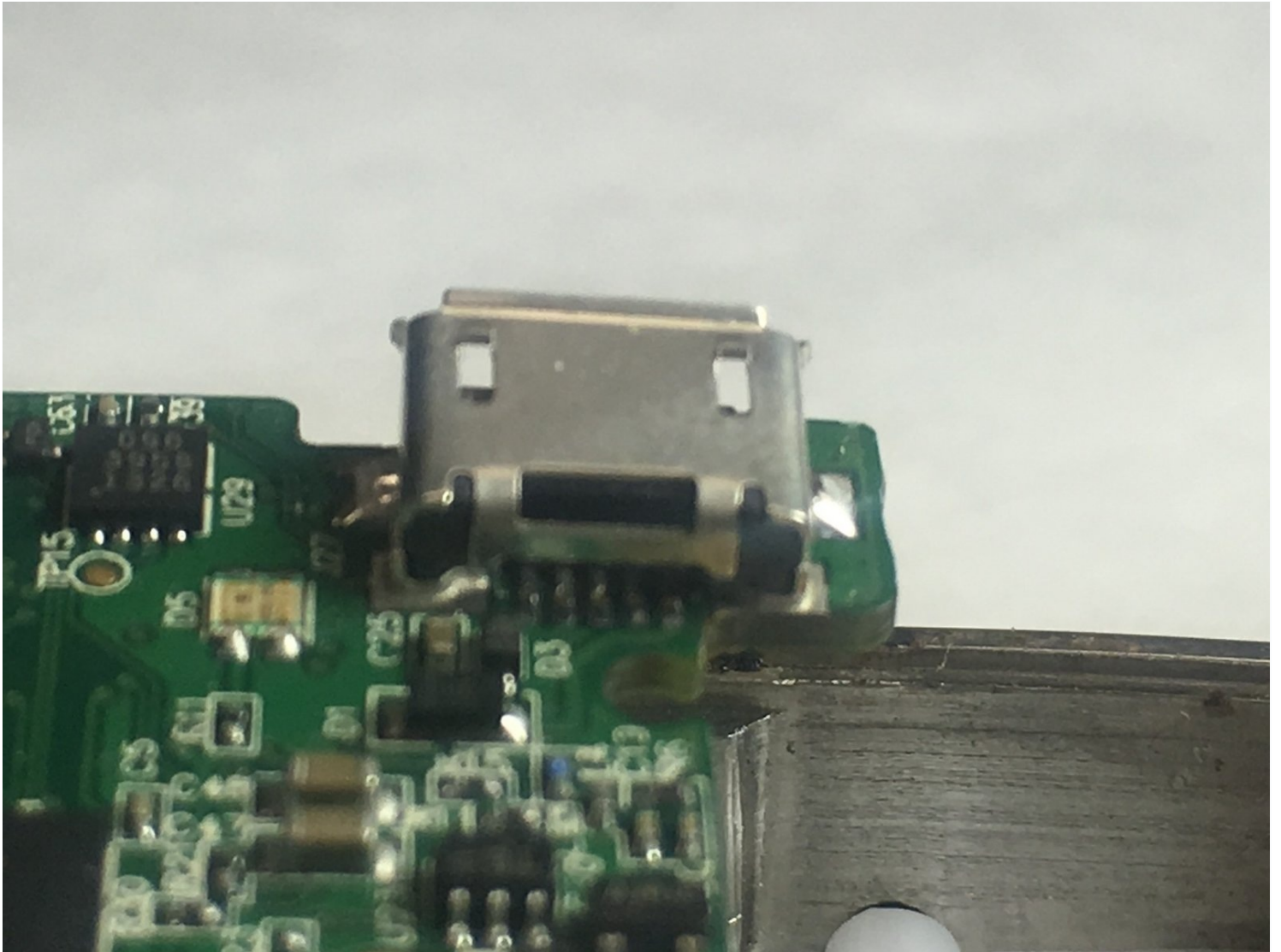




Micro-USB Port Replacement

Written By: Michael Miller



TOOLS:

1.5 mm Flathead Screwdriver (1)

iFixit Opening Tool (1)

Phillips #00 Screwdriver (1)

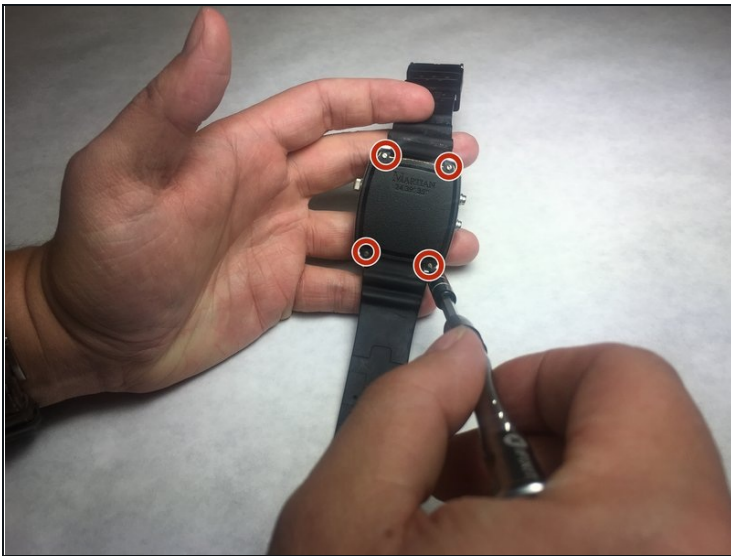
Soldering Iron (1)

Desoldering Braid (1)

Tweezers (1)

Spudger (1)

Step 1 — Back Plate



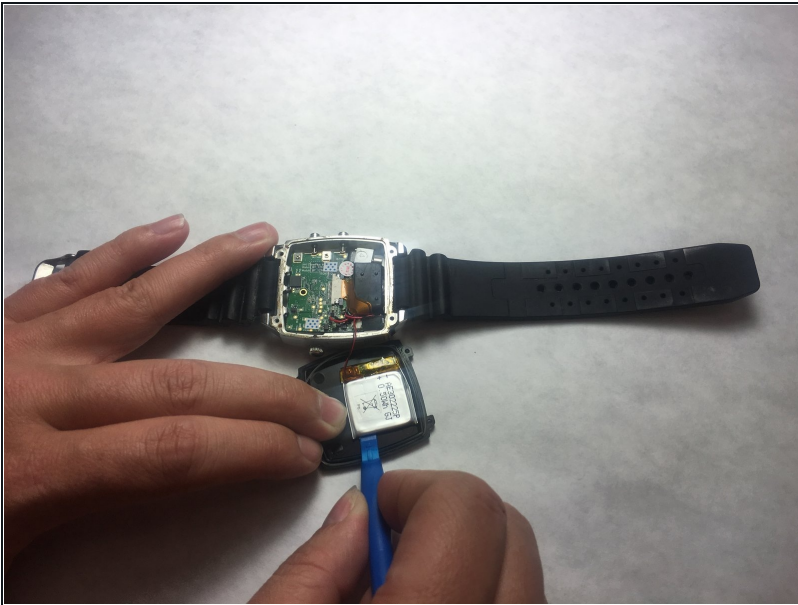
- Unscrew the four 3.4 mm flat head screws

Step 2



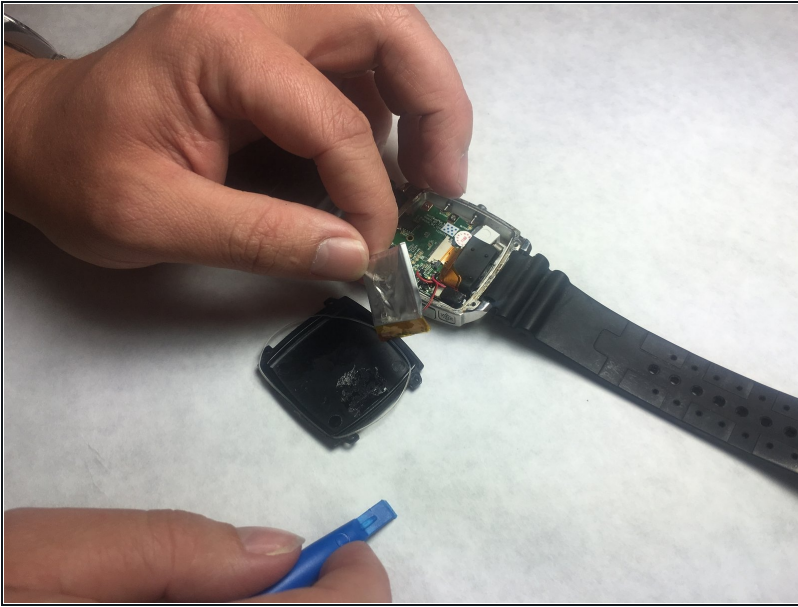
- Carefully lift the back plate off the watch. You will notice a lithium battery and rubber gasket attached to the back plate.

Step 3 — Lithium Battery



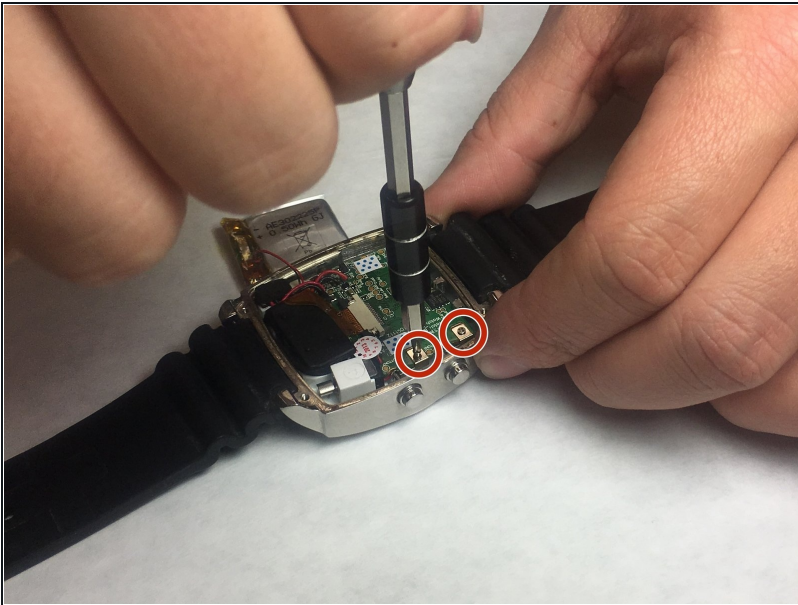
- ① If not replacing lithium battery, skip down two steps.
- Using the plastic removal tool, pry the battery from the backing plate. The battery is simply attached with glue.

Step 4



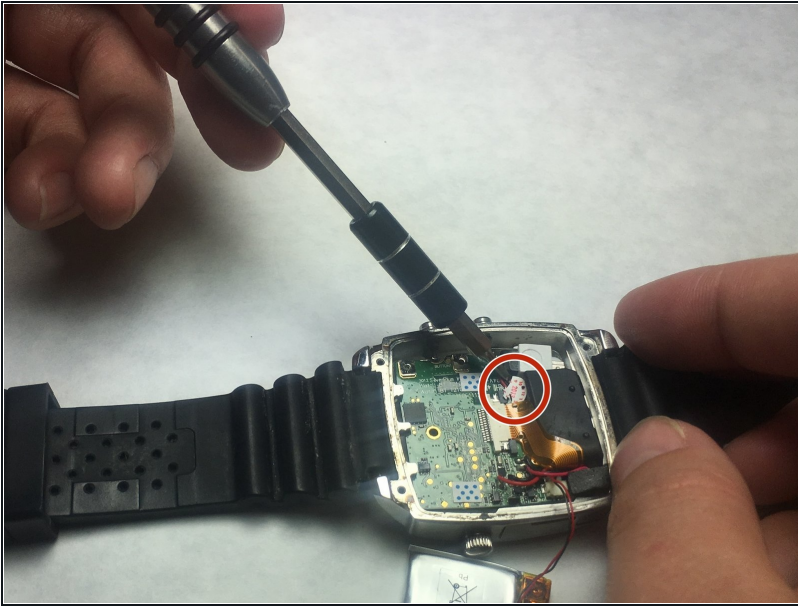
- Desolder the battery connections from the motherboard. Learn how to solder components [here!](#)

Step 5 — Motherboard



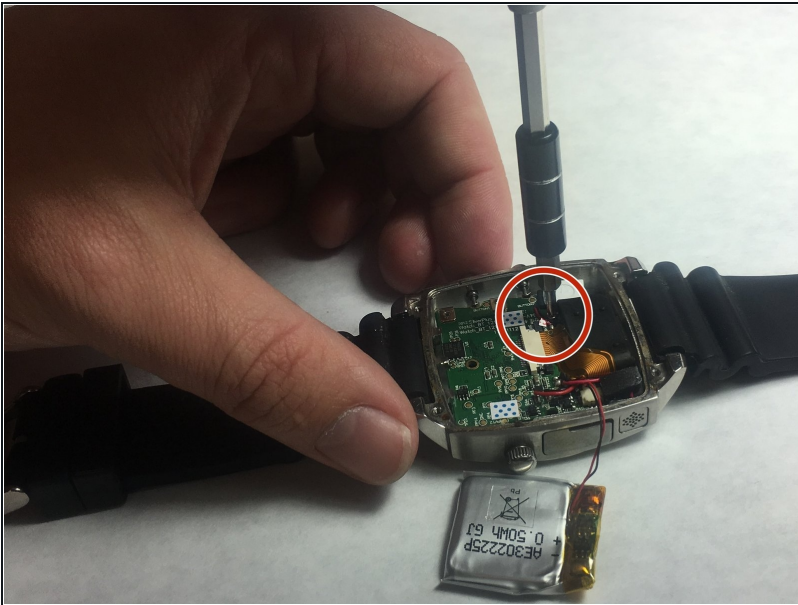
- Use PH00 screw driver to remove two 2.4mm Phillips head screws.

Step 6



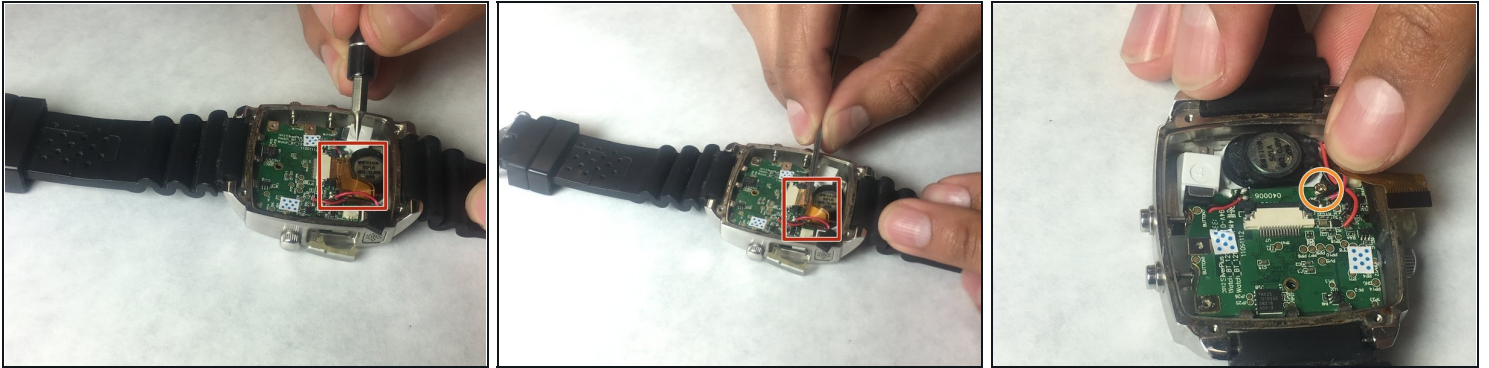
- Use a spudger or [tweezers](#) to remove a white sticker that covers a Phillips head screw.

Step 7



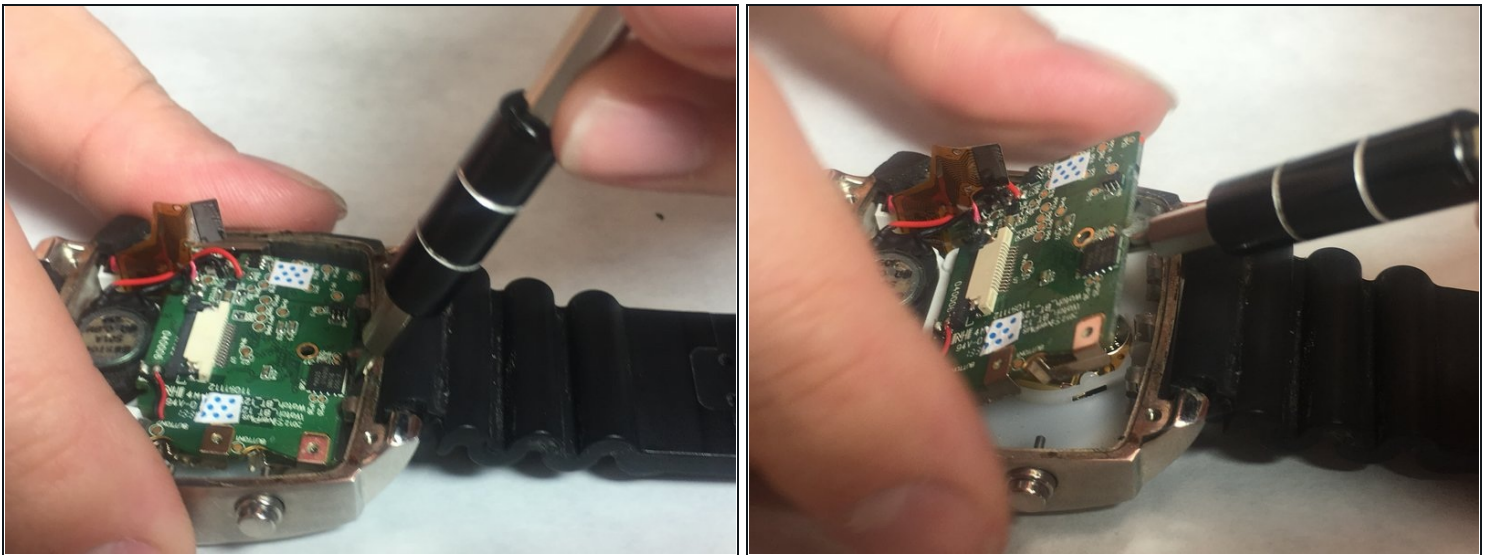
- Use PH00 screwdriver to remove 5.2mm Phillips head screw

Step 8



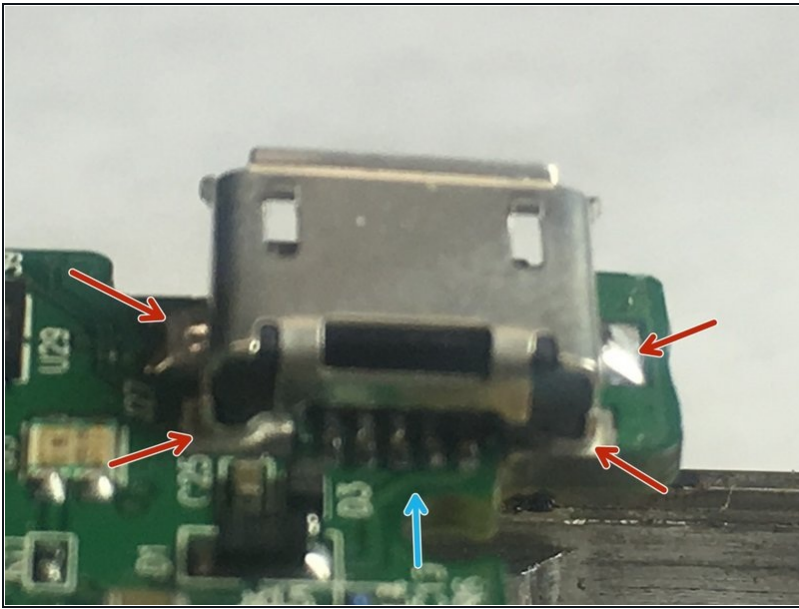
- Use ESD safe tweezers to remove the gold ribbon cable.
- This will expose a second 5.2mm Phillips head screw that can be removed with a PH00 screwdriver.

Step 9



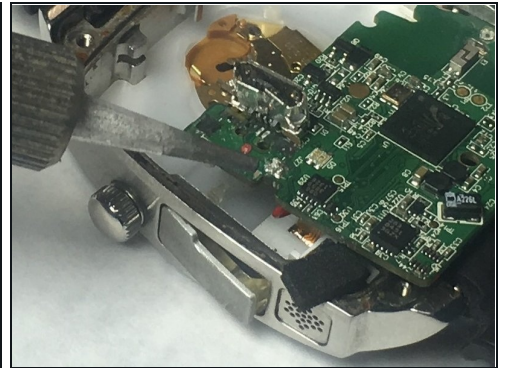
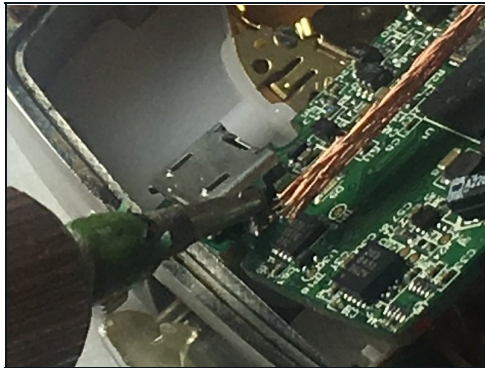
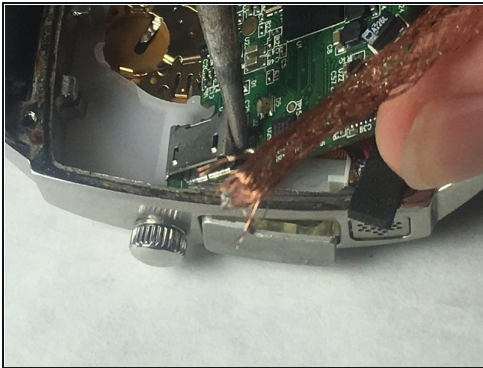
- Use a spudger to gently pry on the motherboard towards the top of the watch, being towards the 12 o'clock position to loosen the motherboard.
- You can now access the parts and pieces on the bottom of, and below the motherboard.

Step 10 — Micro-USB Port



- Locate the four main soldering points marked in red.
- Be aware of the five additional soldered pins marked by the blue arrow.

Step 11



- Begin to desolder the points pointed out in the last step.
- Use the soldering wick to help remove the solder.

To reassemble your device, follow these instructions in reverse order.