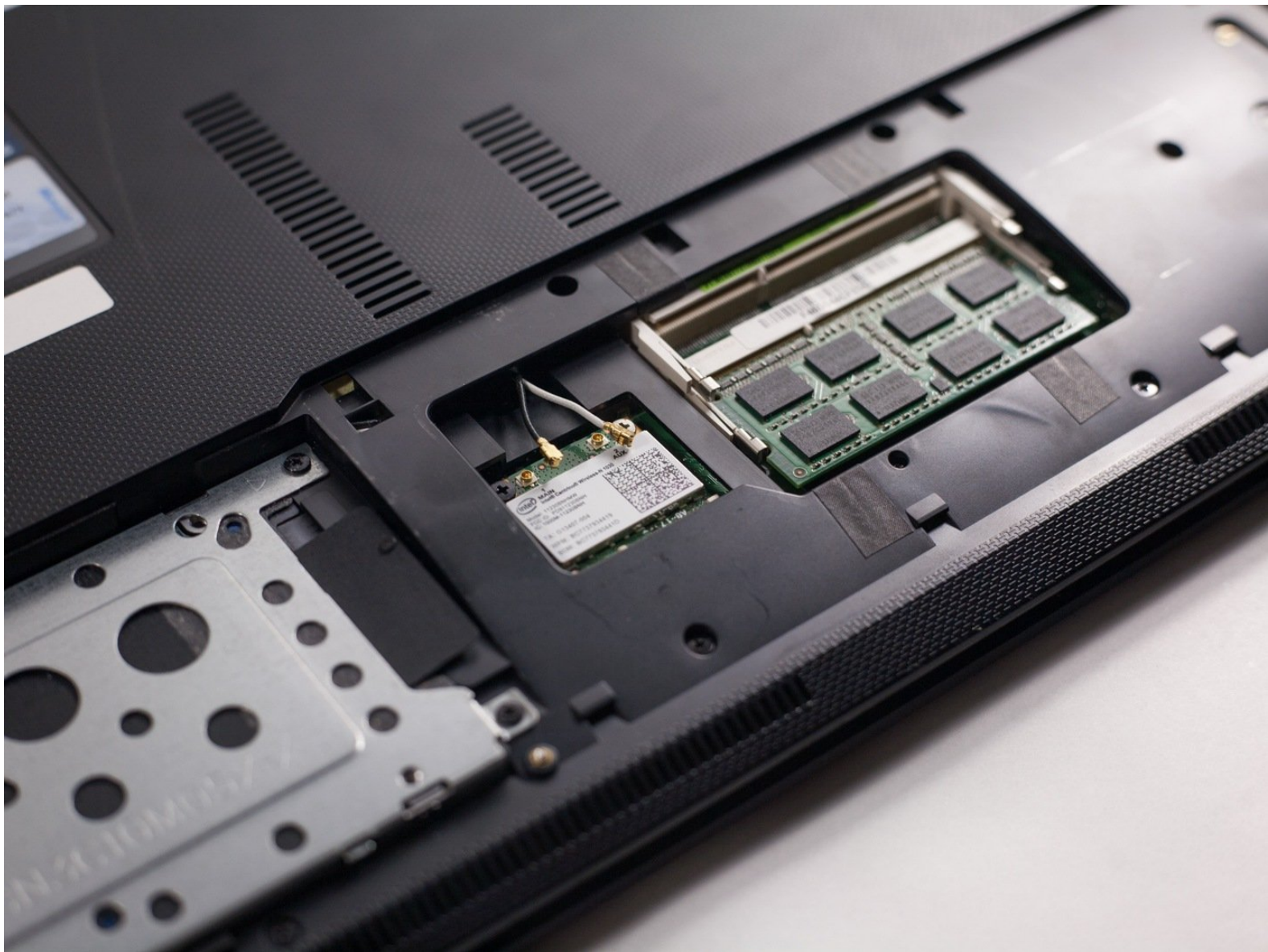




Asus K53E-BBR3 Wi-Fi Card Replacement

After following this guide, the user will have successfully removed their Wi-Fi card from their laptop.

Written By: Liza Sousa



INTRODUCTION

In today's world, staying connected online is an important part of everyone's lives. With this guide, users will be able to replace their Wi-Fi card so that their Internet connections can be faster and more reliable.



TOOLS:

- [Phillips #1 Screwdriver](#) (1)
-

Step 1 — Battery



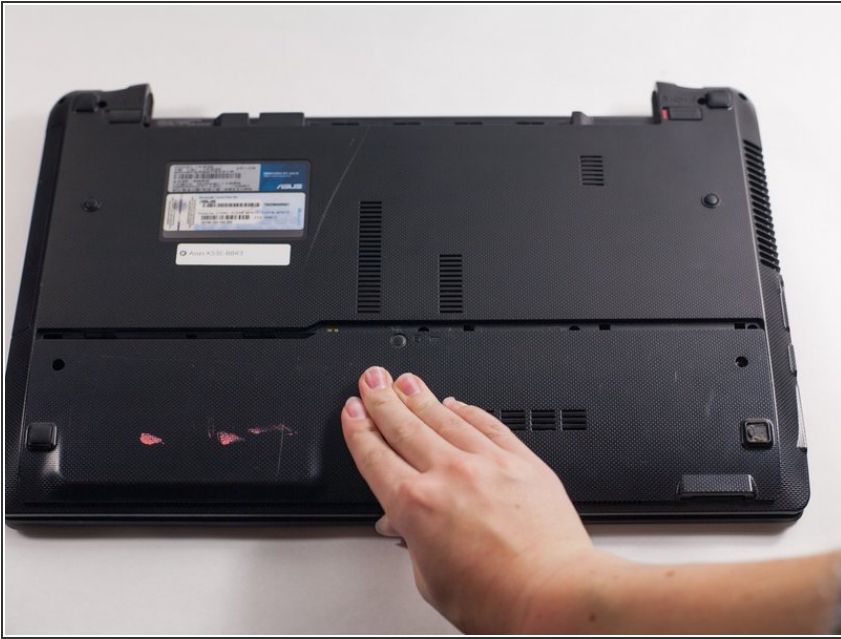
- Place your laptop face down in front of you.
- Slide the button in the top right corner to the right so that the orange marker is showing.
- Press the spring loaded latch to release the battery from the computer.

Step 2 — Back Panel



- Unscrew two 5mm Phillips #1 screws.

Step 3



- Pull down and lift up on the back panel to remove it.

Step 4 — Wi-Fi Card



- Disconnect the wires by pulling them up.

Step 5



- Unscrew the two 5mm Phillips #1 screws.

Step 6



- Lift up the Wi-Fi card and remove it.

To reassemble your device, follow these instructions in reverse order.