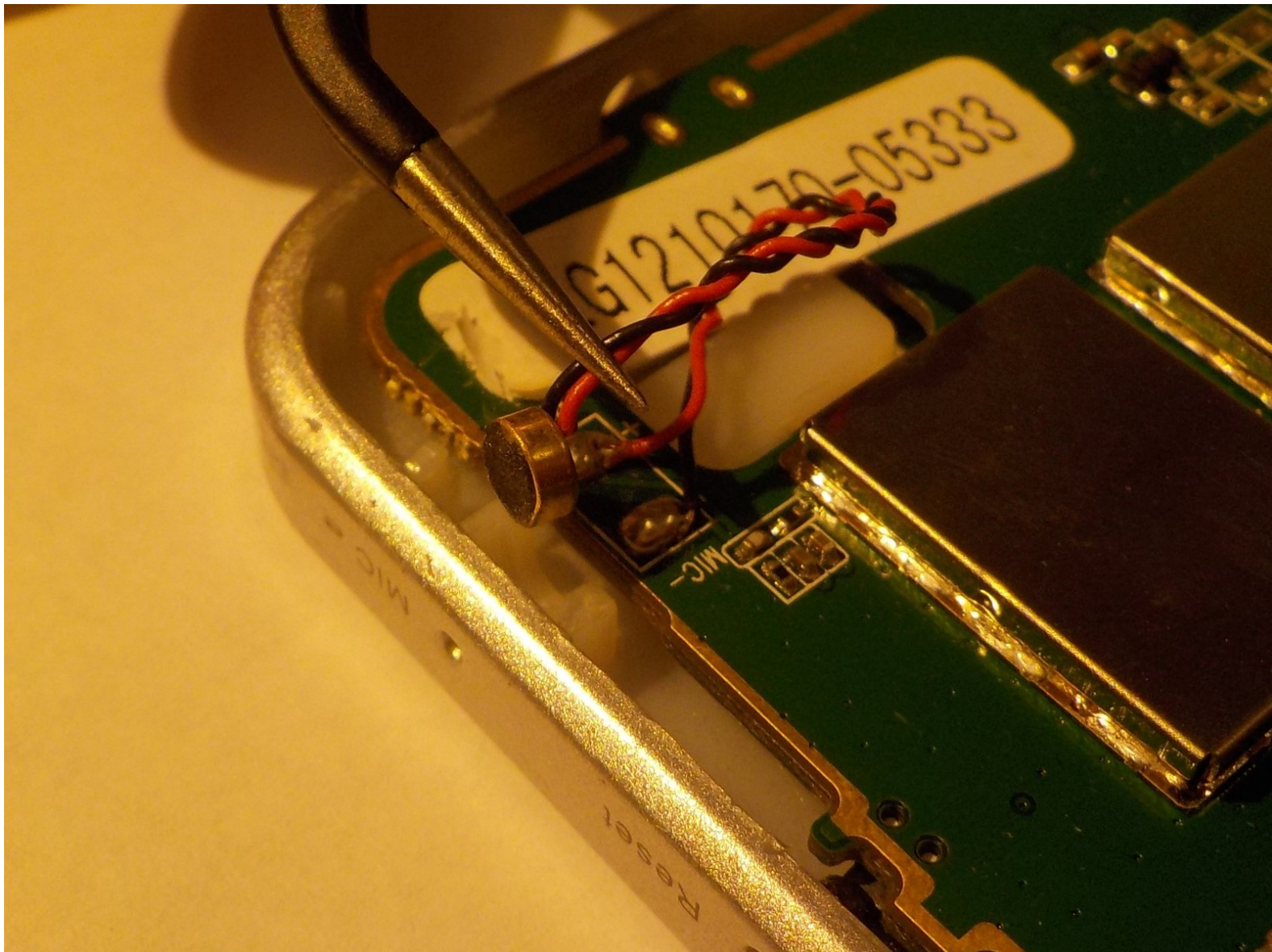




Leader Impression i10A-LE Microphone Replacement

This guide will show you how to replace a broken microphone on your Leader Impression i10A-LE.
This guide will take about 15 minutes.

Written By: riley seyffert



INTRODUCTION

Removing and replacing the microphone for the Leader Impression i10A-LE.



TOOLS:

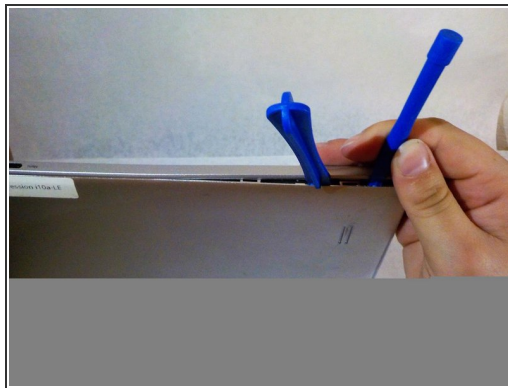
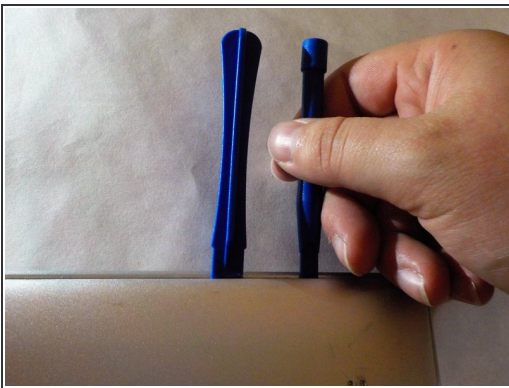
- [Tweezers](#) (1)
 - [iFixit Opening Tools](#) (1)
 - [Soldering Iron](#) (1)
-

Step 1 — Microphone



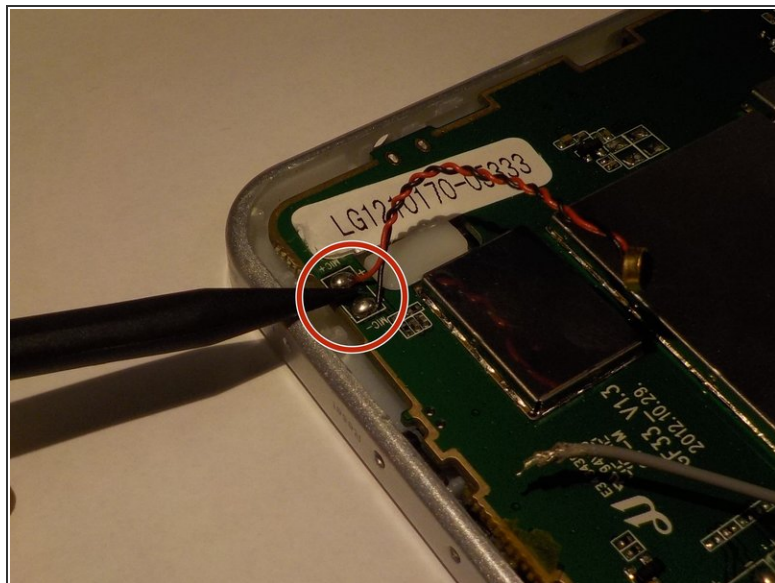
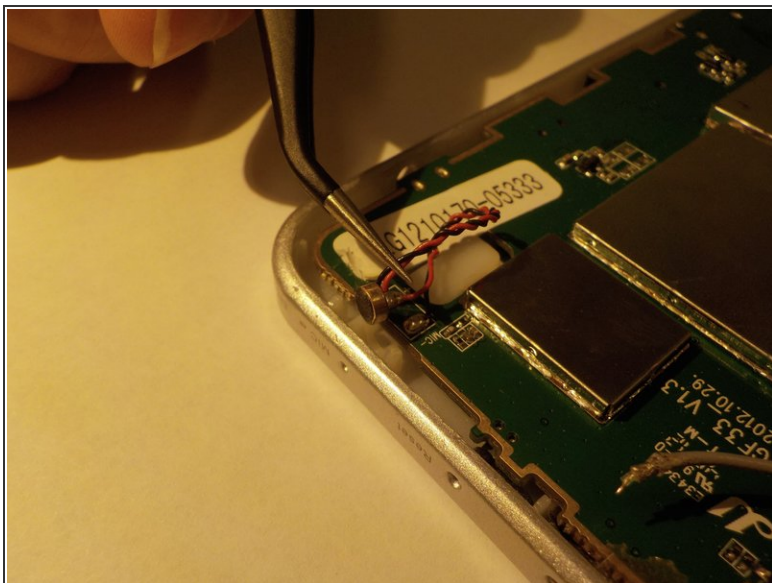
- Orient your Leader Impression i10A-LE with the word "Impression" closest to you and the camera in the top left corner.

Step 2



- Pry the back off by using plastic opening tools.
- Using the plastic tools slide the flat end into the device.
- Gently pry the back piece until you hear a popping noise.
- Once the back is loose, remove it from the device and set aside.

Step 3



- ⚠ Disconnect the positive and negative battery leads.
- Remove the microphone from plastic housing with the tweezers.
- Desolder the positive (red) and negative (black) power leads.

To reassemble your device, follow these instructions in reverse order.