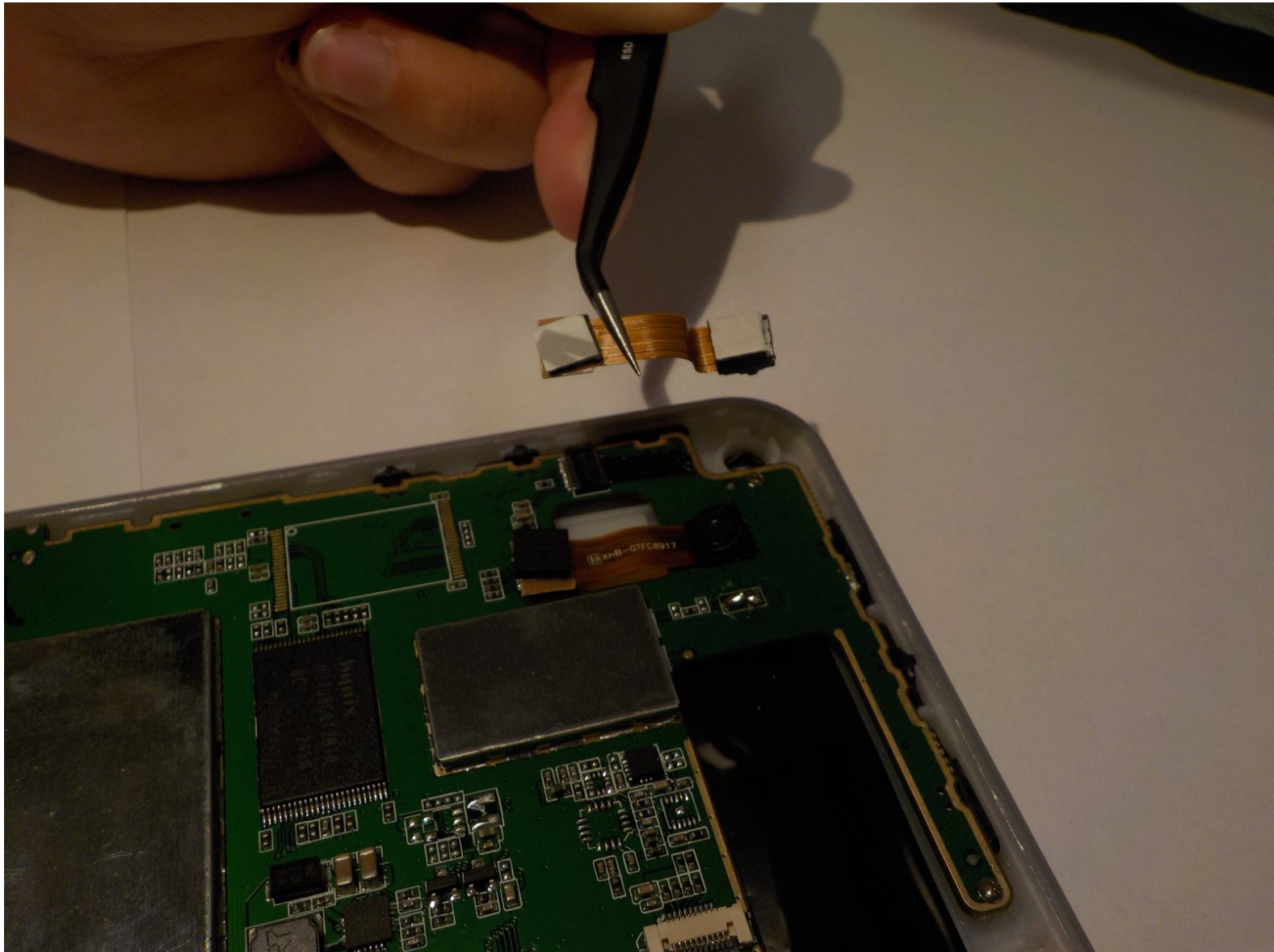




Leader Impression i10A-LE Front Facing Camera Replacement

The removal and replacement of the front facing camera on the Leader Impression i10A-LE.

Written By: Crystal Dorrian



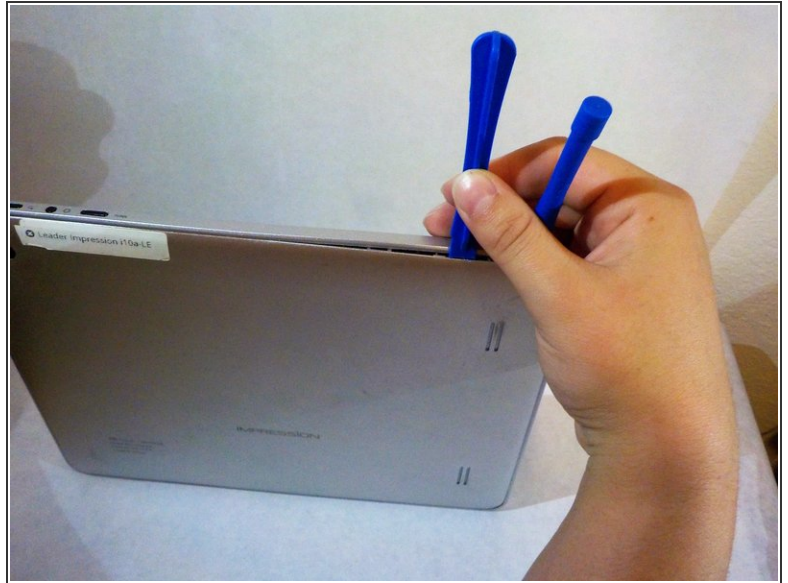
INTRODUCTION

This replacement guide will teach you how to remove and replace the front facing camera to your Leader Impression i10A-LE tablet. This fix can take anywhere from 5-10 minutes.

TOOLS:

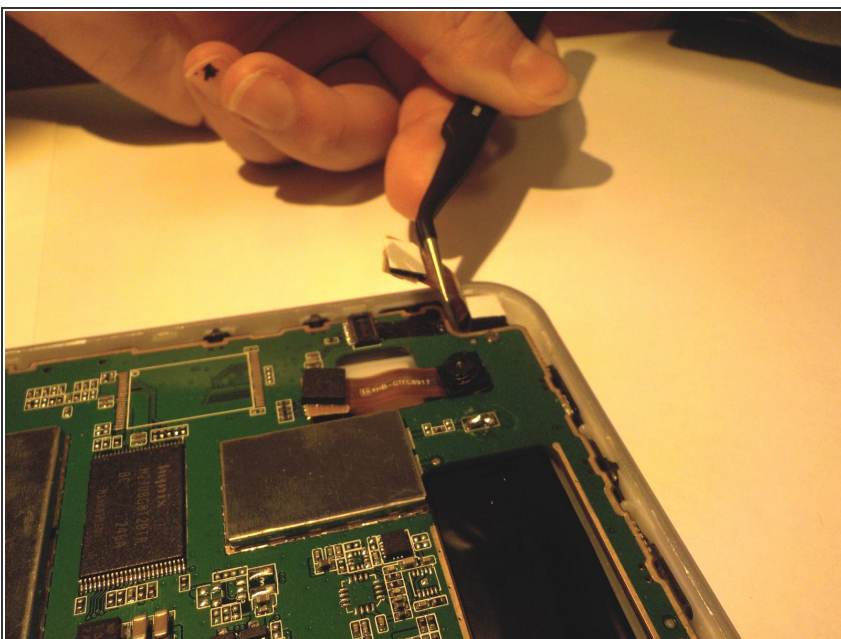
- [iFixit Opening Tools](#) (1)
 - [Tweezers](#) (1)
-

Step 1 — Front Facing Camera



- Start by prying the back off by using plastic opening tools.
- Slide the flat end of the plastic tools into the seam device.
- Using another plastic tool, slowly pry along the seam until the back pops off.

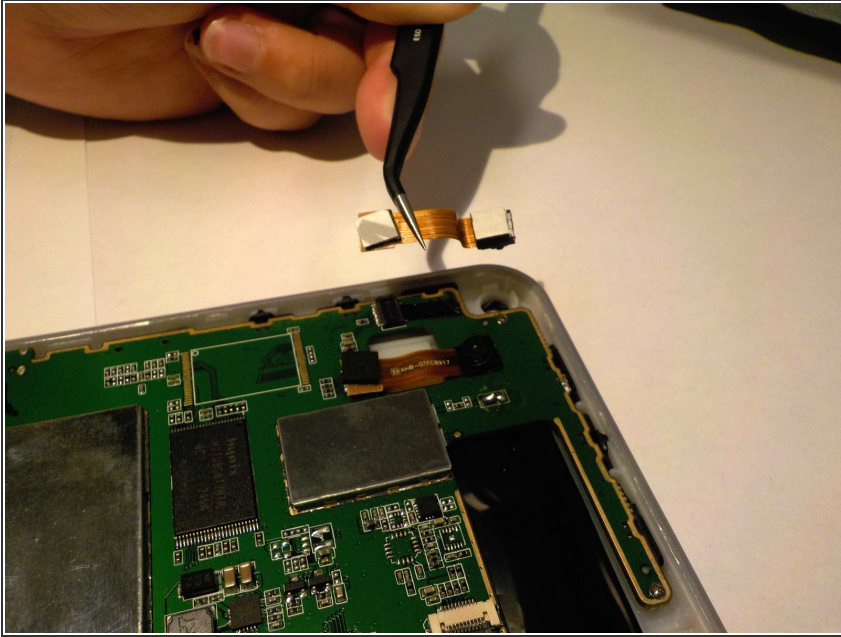
Step 2



 **Reminder to disconnect the battery.**

- Locate the Camera in the top left corner of the Leader Impression.
- Using the tweezers, remove the bottom of the camera from the motherboard.
- The top of the camera will detach as you pull upward.

Step 3



- Remove the camera from it's slot.

To reassemble your device, follow these instructions in reverse order.