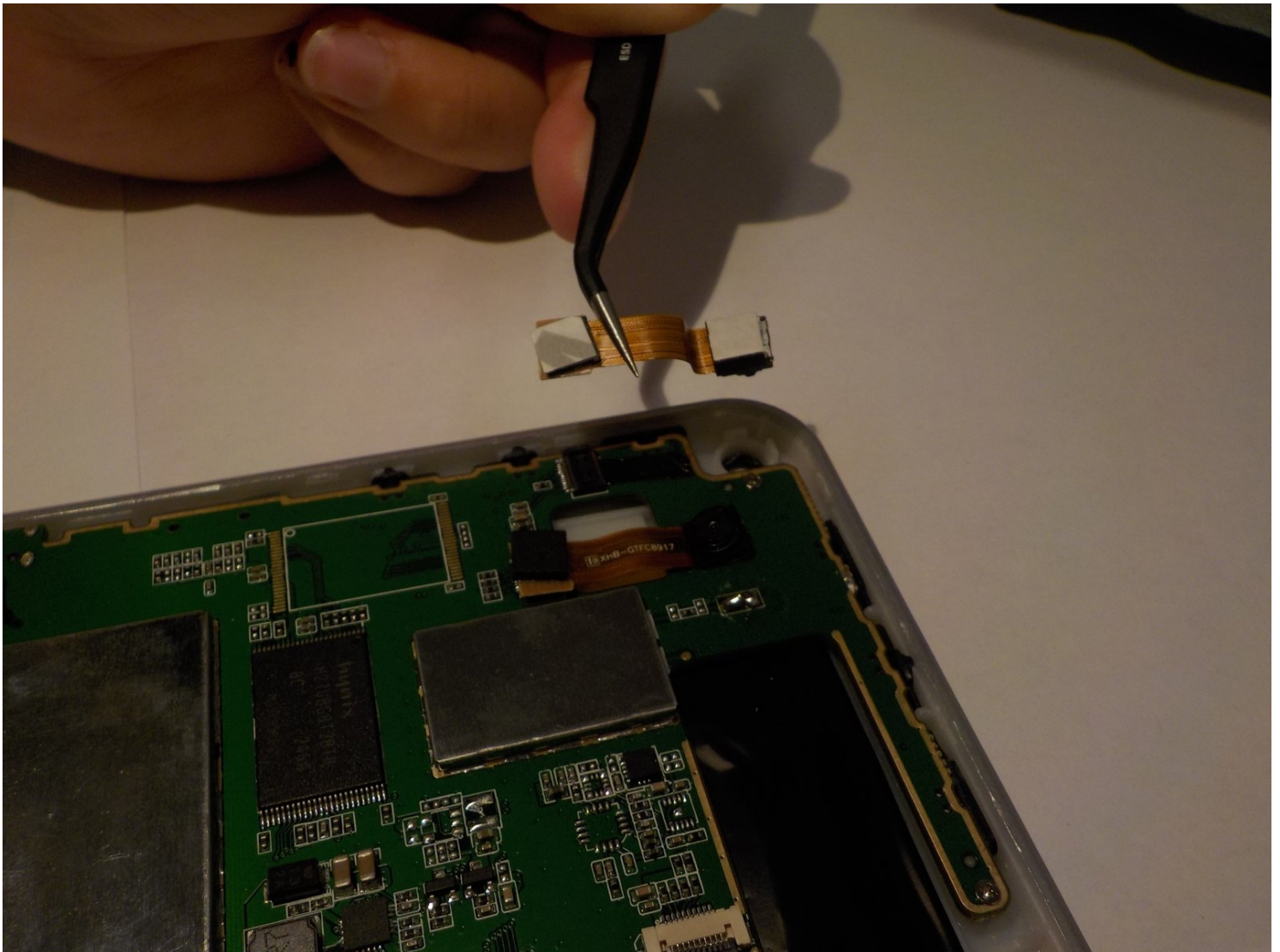




Leader Impression i10A-LE Front Facing Camera Replacement

This replacement guide will teach you how to...

Written By: Crystal Dorrian



INTRODUCTION

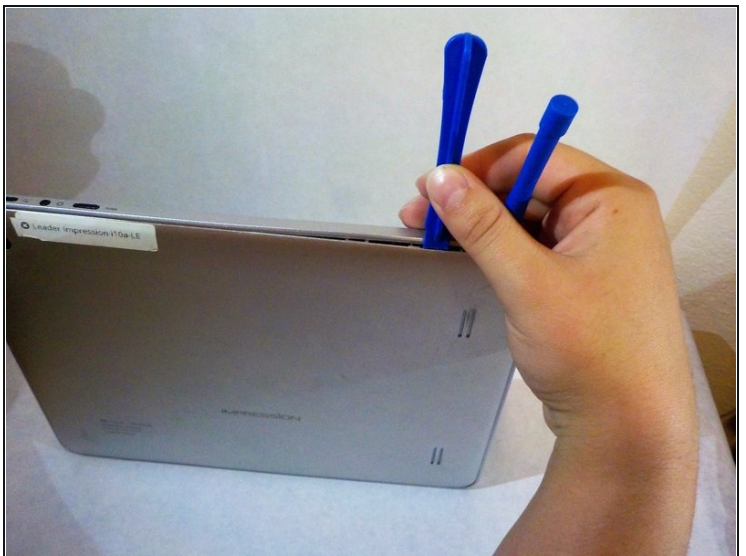
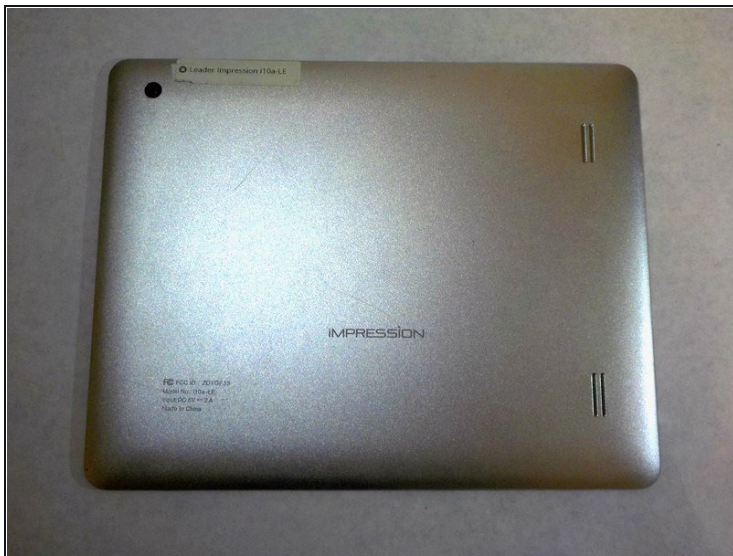
This replacement guide will teach you how to remove and replace the front facing camera to your Leader Impression i10A-LE tablet. This fix can take anywhere from 5-10 minutes.

TOOLS:

[iFixit Opening Tool](#) (1)

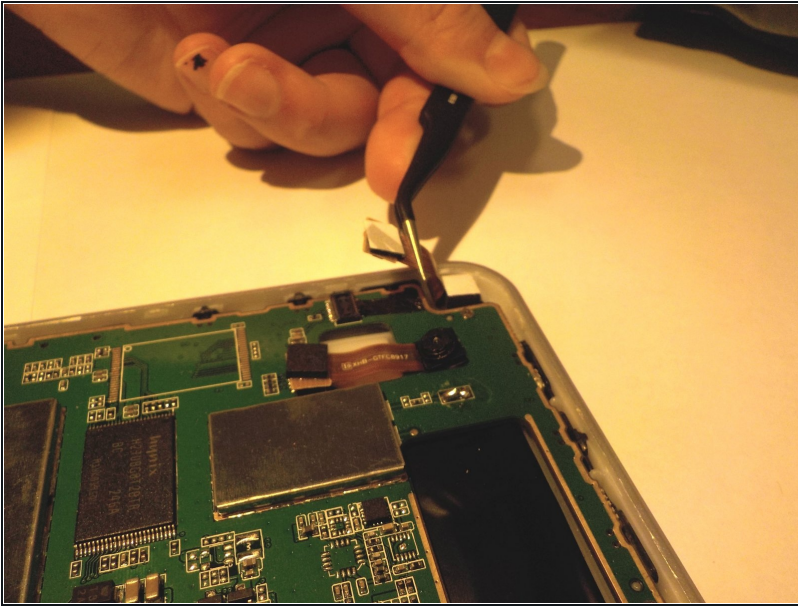
[Tweezers](#) (1)

Step 1 — Front Facing Camera



- Start by prying the back off by using plastic opening tools.
- Slide the flat end of the plastic tools into the seam device.
- Using another plastic tool, slowly pry along the seam until the back pops off.

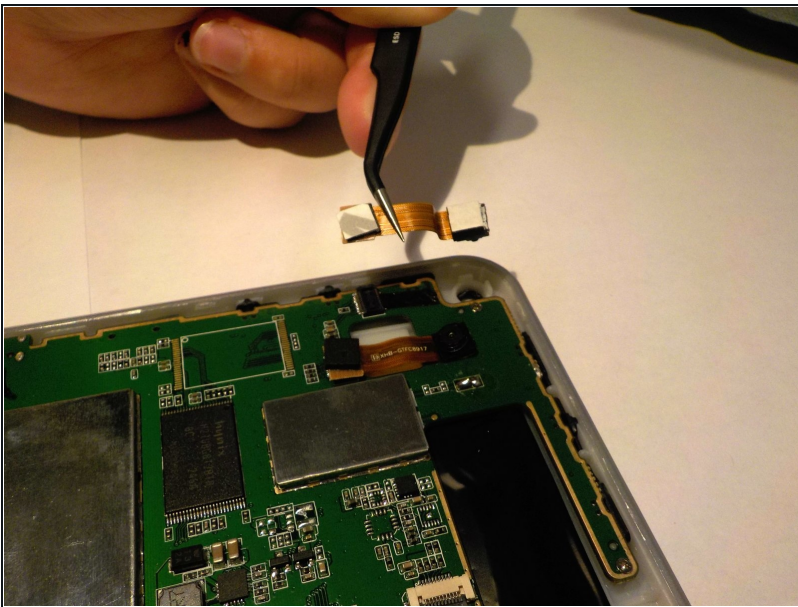
Step 2



⚠ Reminder to disconnect the battery.

- Locate the Camera in the top left corner of the Leader Impression.
- Using the [tweezers](#), remove the bottom of the camera from the motherboard.
- The top of the camera will detach as you pull upward.

Step 3



- Remove the camera from it's slot.

To reassemble your device, follow these instructions in reverse order.