



Brother PT-110 Batteries Replacement

This guide will show you how to replace the batteries.

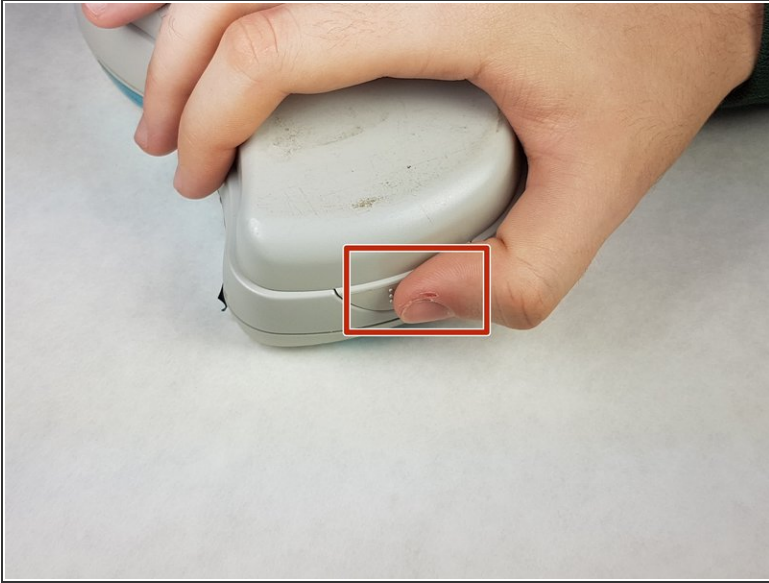
Written By: Mohammad Almerri



INTRODUCTION

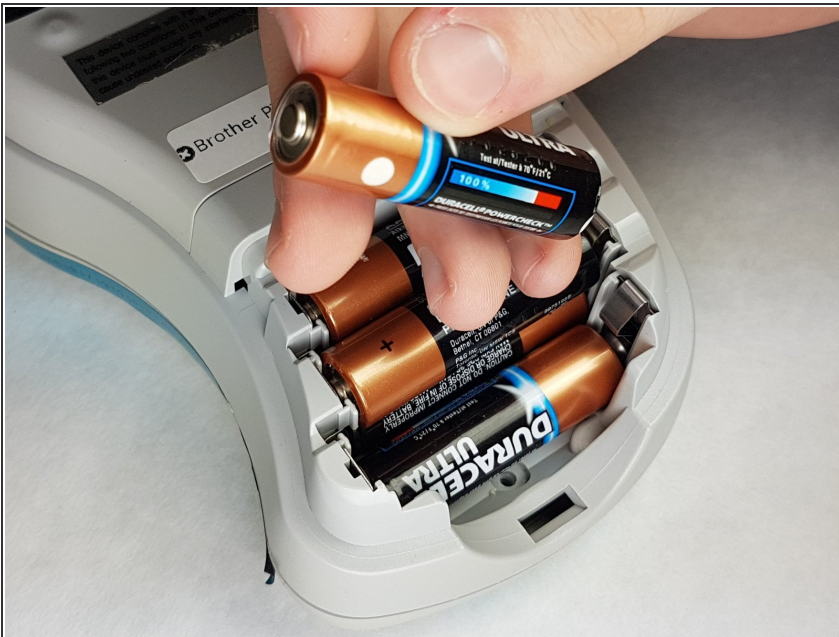
The batteries are responsible for powering the device. If they are empty the device will not turn on and your labels will not print.

Step 1 — Batteries



- Push on the side of the cover, and remove it.

Step 2



- Remove the batteries.

To reassemble your device, follow these instructions in reverse order.