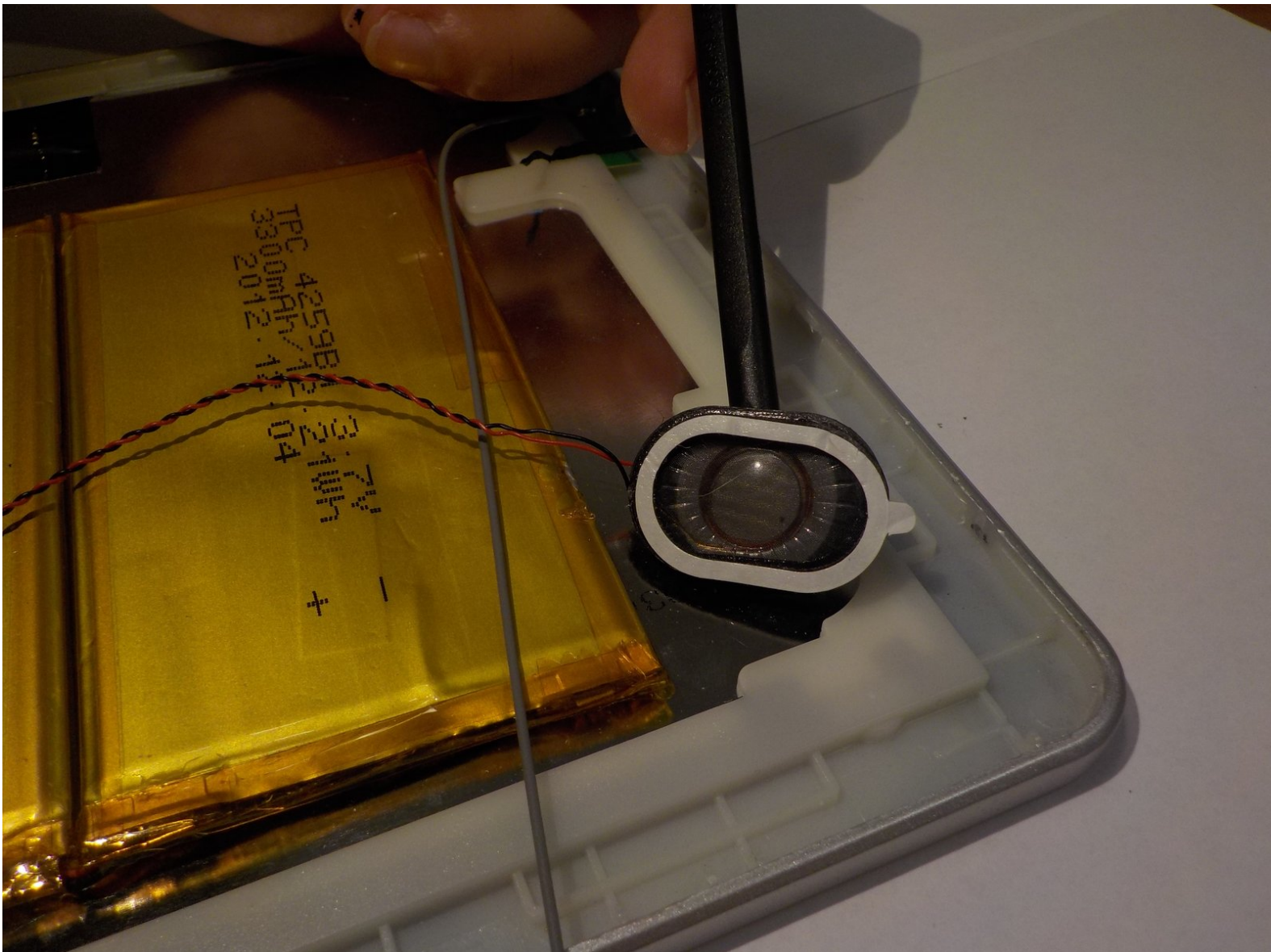




# Leader Impression i10A-LE Speakers Replacement

This repair guide is for the Leader Impression i10A-LE speaker replacement. This replacement will take 15 minutes to complete.

Written By: jcg



This document was generated on 2020-11-15 07:25:43 PM (MST).

---

## INTRODUCTION

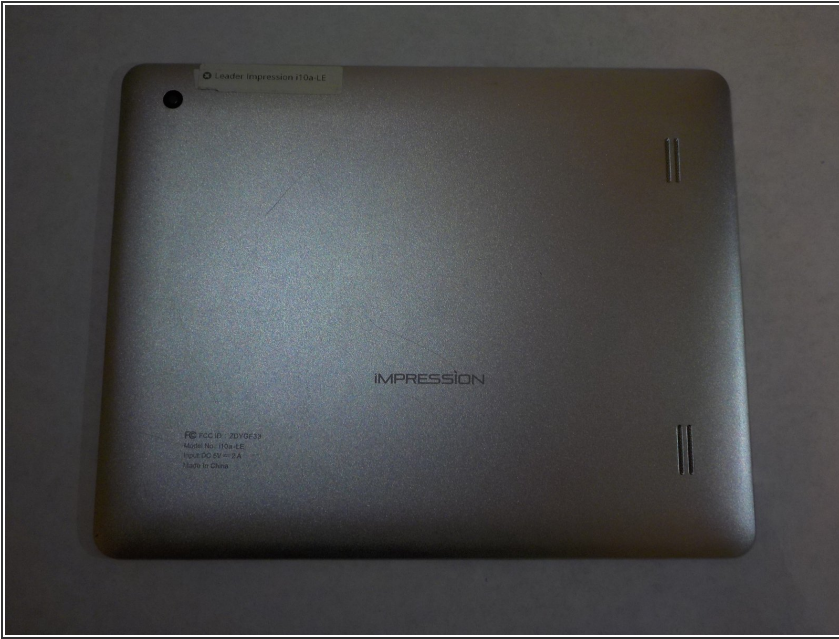
If there is no sound coming from your device there is a good chance your speakers are broken. This guide will show you how to replace the speakers in the Leader Impression i10A-LE tablet.

---

### TOOLS:

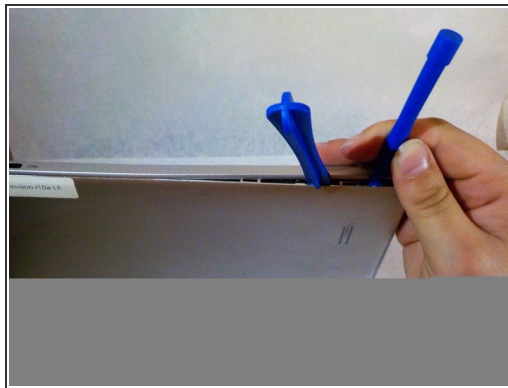
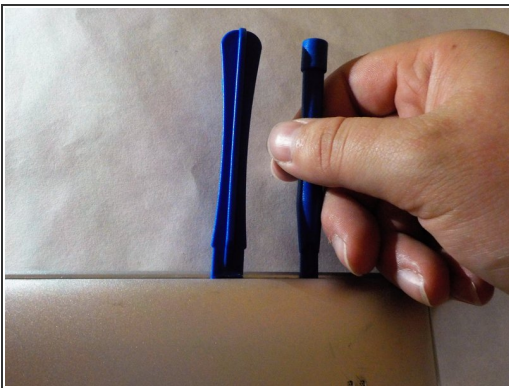
- [iFixit Opening Tools](#) (1)
  - [Spudger](#) (1)
  - [Soldering Iron](#) (1)
-

## Step 1 — Speakers



- Start with your Leader Impression i10A-LE with the word "Impression" closest to you and the camera in the top left corner.

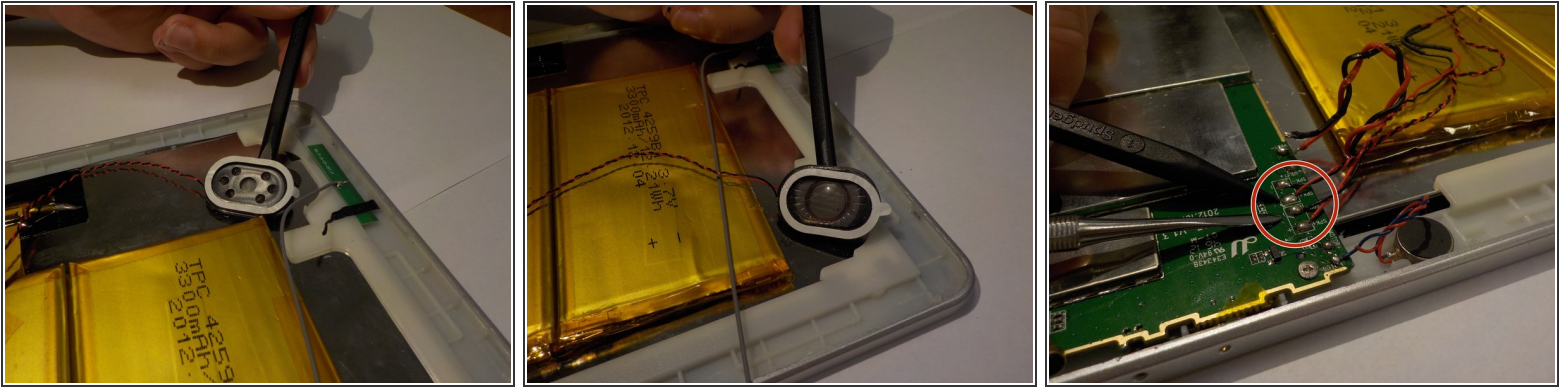
## Step 2



- Start by prying the back off by using plastic opening tools
- Using the plastic tools slide the flat end into the device.
- Gently pry the back piece until you hear a popping noise.
- Once the back is loose, remove it from the device and set aside.



### Step 3



- Use the spudger to pry both of the speakers from the tablet.
- Follow both sets of speaker wires to the motherboard where they are connected.
- Desolder the wire connections from the motherboard.

To reassemble your device, follow these instructions in reverse order.