



# Dell Studio 1555 Display Replacement

Display replacement guide for the Dell Studio 1555.

Written By: Josh Boone



---

## INTRODUCTION

If your screen becomes unresponsive you may need to replace it. A Phillips 1 screwdriver and a plastic opening tool are required for this guide.



### TOOLS:

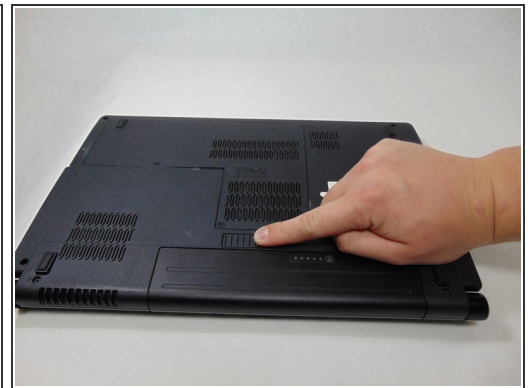
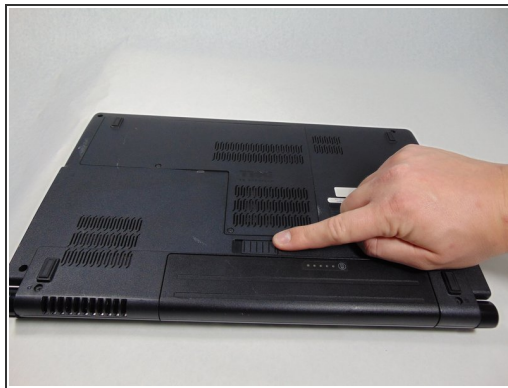
- [Phillips #1 Screwdriver](#) (1)
-

## Step 1 — Battery



- Turn off and unplug the laptop.
  - ⚠ Failure to properly turn off device before handling the battery could result in electrical shock.
- Flip the laptop so the underside is facing up with the battery closest to you.

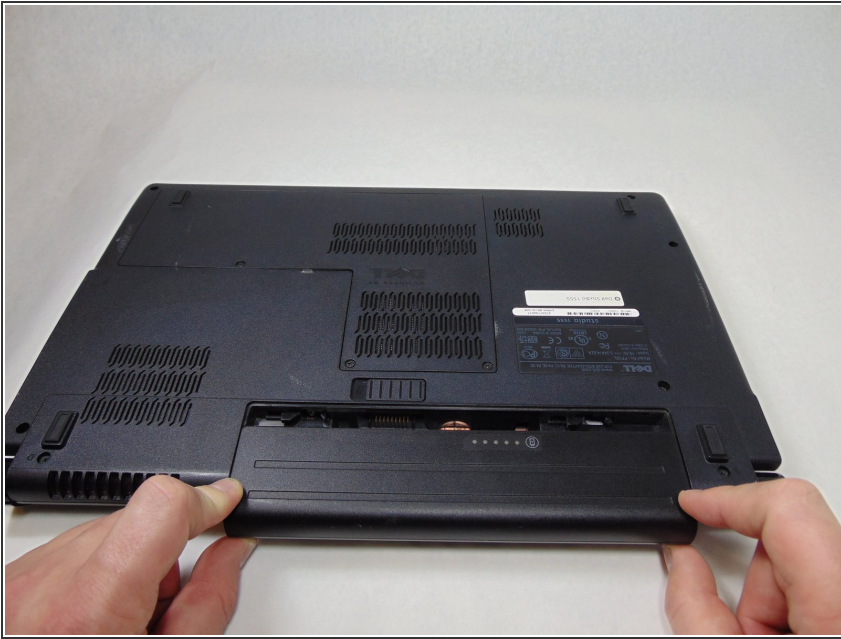
## Step 2



- Slide the locking switch to the left to release the battery.



### Step 3



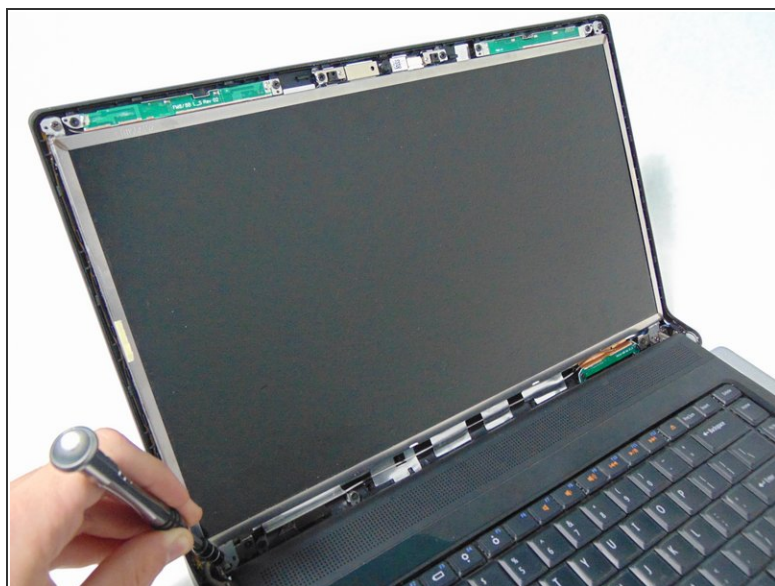
- Gently pull the battery away from the device.

### Step 4 — Display



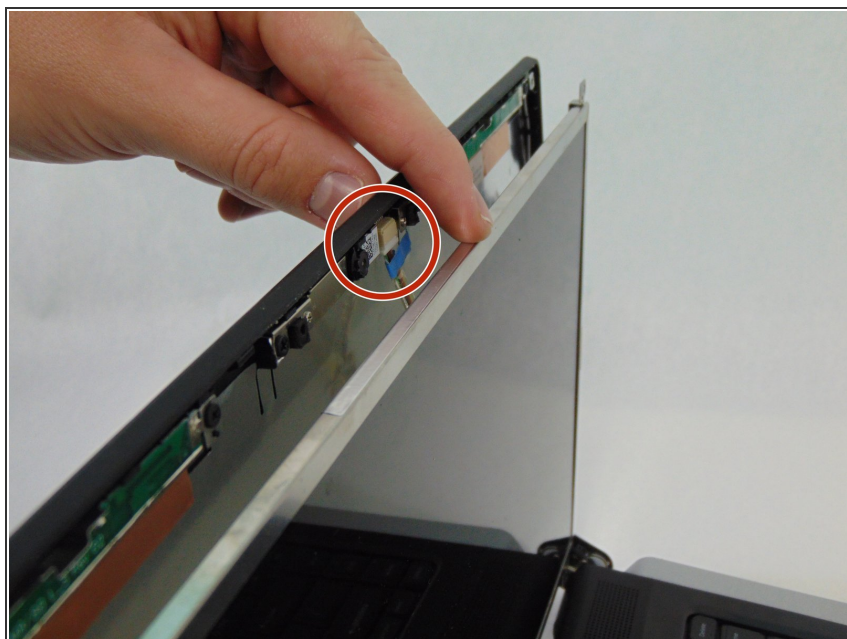
- Insert a plastic opening tool between the bezel and the display cover.
- Wiggle it to release the latches.
- Separate the bezel from the cover.

## Step 5



- Remove the four 3 mm screws securing the LCD using the #1 Phillips screwdriver.

## Step 6



- Separate the LCD assembly from the display cover so you will be able to access the webcam cable.
- Unplug the camera cable.

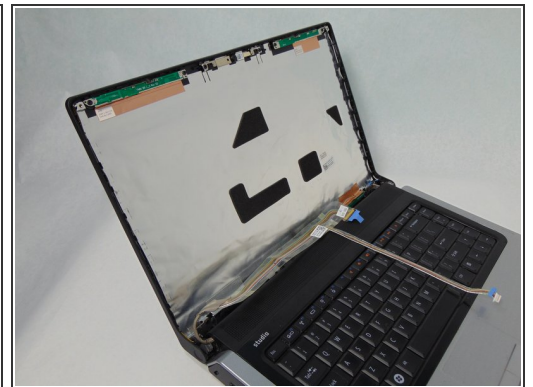
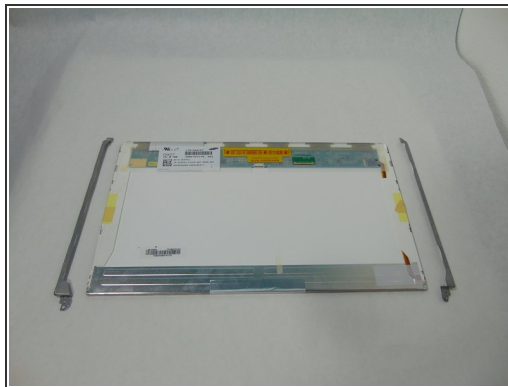
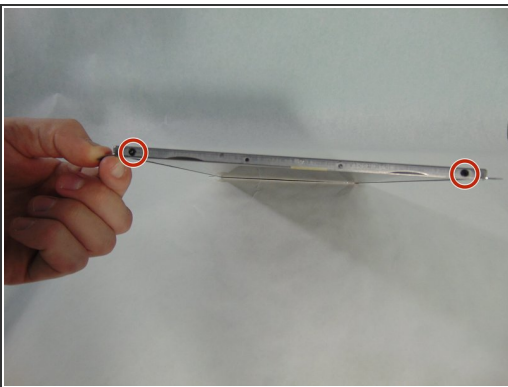


## Step 7



- Place the LCD face down on the top cover.
- Remove the sticky tape securing the video cable connector.
- Unplug the video cable from the screen.

## Step 8



- Remove the LCD from the laptop.
  - Remove the four 3mm screws holding the mounting brackets using the #1 Phillips screwdriver. Two on each side.
- i** You will have to transfer the mounting brackets to the new screen.

To reassemble your device, follow these instructions in reverse order.