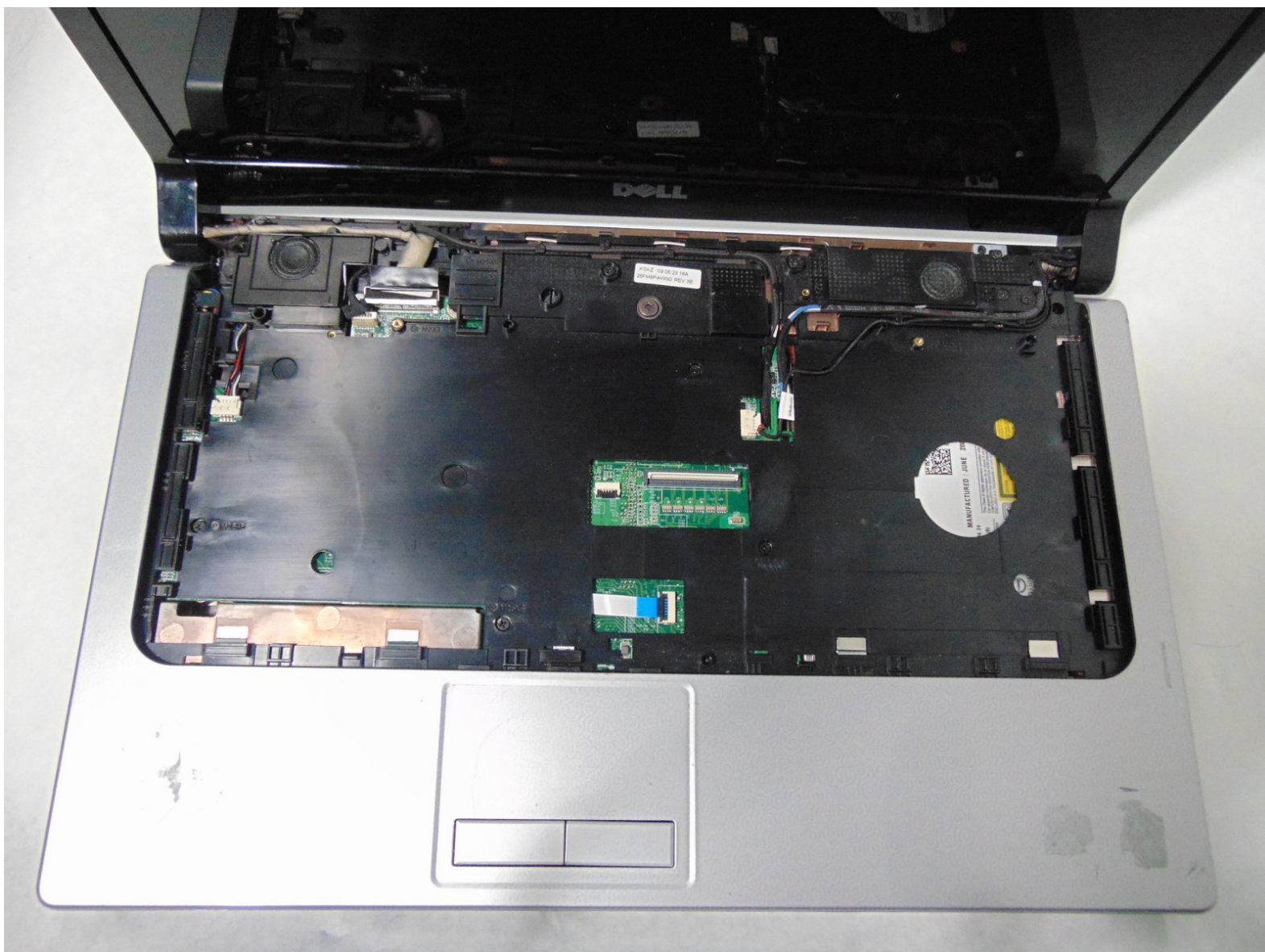




Dell Studio 1555 Keyboard Replacement

Keyboard replacement guide for the Dell Studio 1555

Written By: Hunter Tuck



INTRODUCTION

You may need to replace your keyboard due to failure. You will need a Phillips 1 screwdriver for this guide.



TOOLS:

- [Phillips #1 Screwdriver](#) (1)
-

Step 1 — Battery



- Turn off and unplug the laptop.
 - ⚠ Failure to properly turn off device before handling the battery could result in electrical shock.
- Flip the laptop so the underside is facing up with the battery closest to you.

Step 2



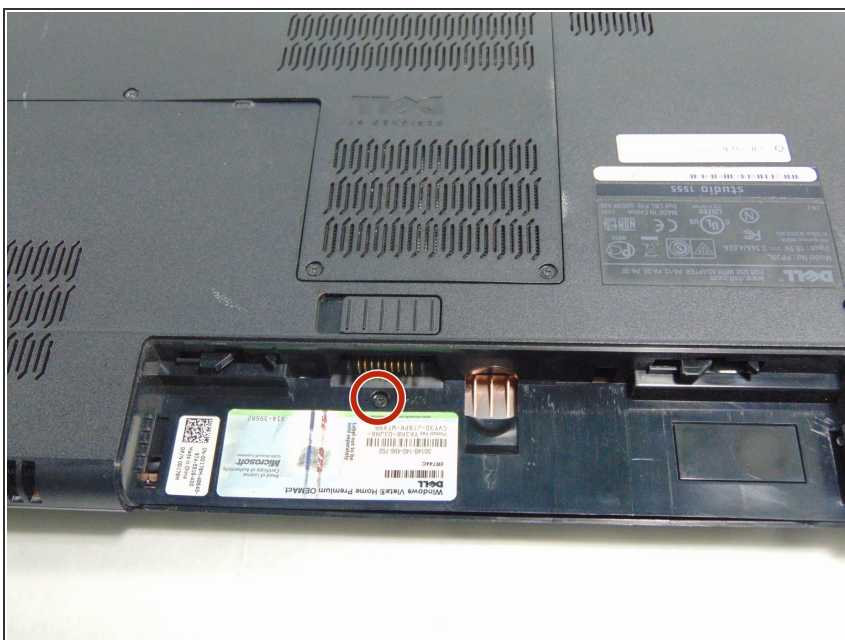
- Slide the locking switch to the left to release the battery.

Step 3



- Gently pull the battery away from the device.

Step 4 — Keyboard



- Remove the single 3mm screw underneath the battery with a #1 Phillips screw driver, which holds the media control cover.

Step 5



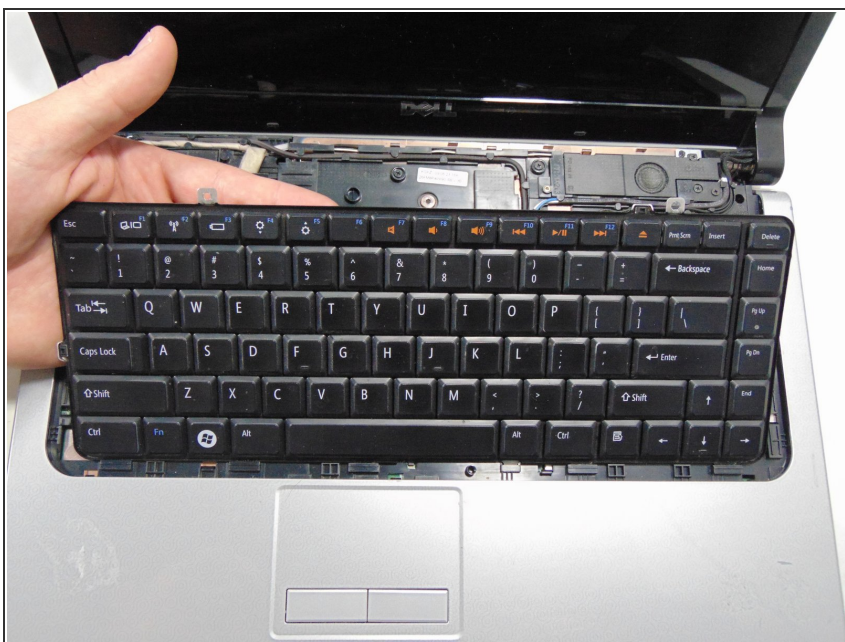
- Flip the laptop over and flatten it out as much as possible.
- Unsnap the media control cover from the laptop starting nearest to the display.

Step 6



- Remove the two 3mm screws with a #1 Phillips screwdriver, holding down the keyboard.

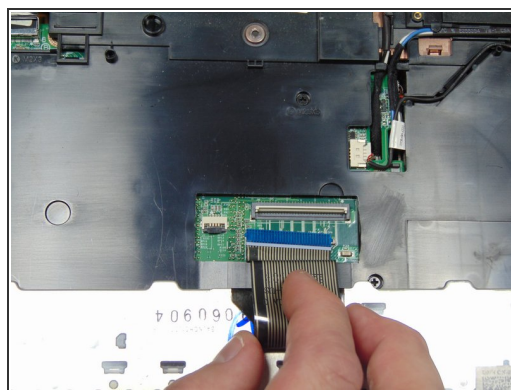
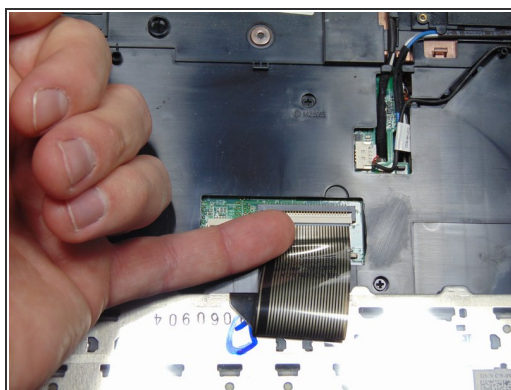
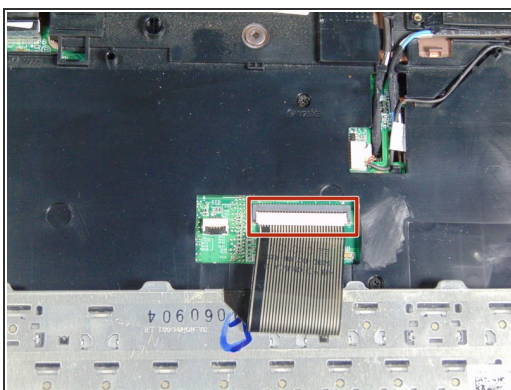
Step 7



- Slowly lift the keyboard away from the base.

⚠ If you pull too hard you risk breaking the keyboard cable connector from the motherboard.

Step 8



- Flip up the black tab on the keyboard ZIF connector and unplug the cable.

Step 9



- Remove the keyboard

To reassemble your device, follow these instructions in reverse order.