



Dell Inspiron Mini 10 Touchpad Replacement

This guide will help you install a new touchpad for your Dell Inspiron Mini 10.

Written By: Angela Wild



INTRODUCTION

This guide will provide basic information for:

- Replacing components of the device.
- Disassembling the device to reach and repair the touchpad.
- Precautions for preventing further damage.
- Required tools for replacement.



TOOLS:

- [iFixit Opening Tools](#) (1)
 - [Phillips #0 Screwdriver](#) (1)
 - [64 Bit Driver Kit](#) (1)
-

Step 1 — Battery



- ⚠ To prevent injury and loss of data, ensure the device is turned off.
- Slide the release latches out toward the edges to unlock the battery.

Step 2



- Remove the battery by pulling it up and out.

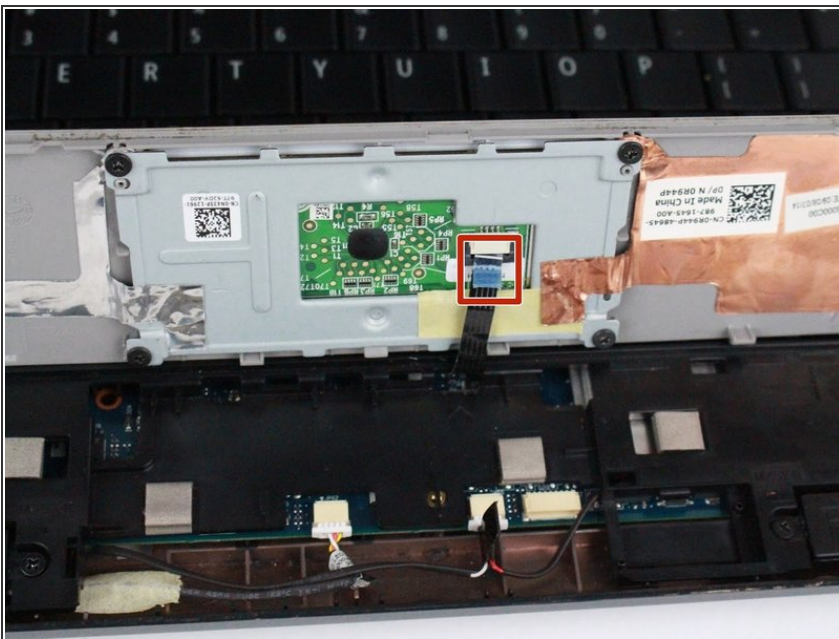
Step 3 — Touchpad



- Using a spudger, gently pry the palm rest off of the palm rest bracket.

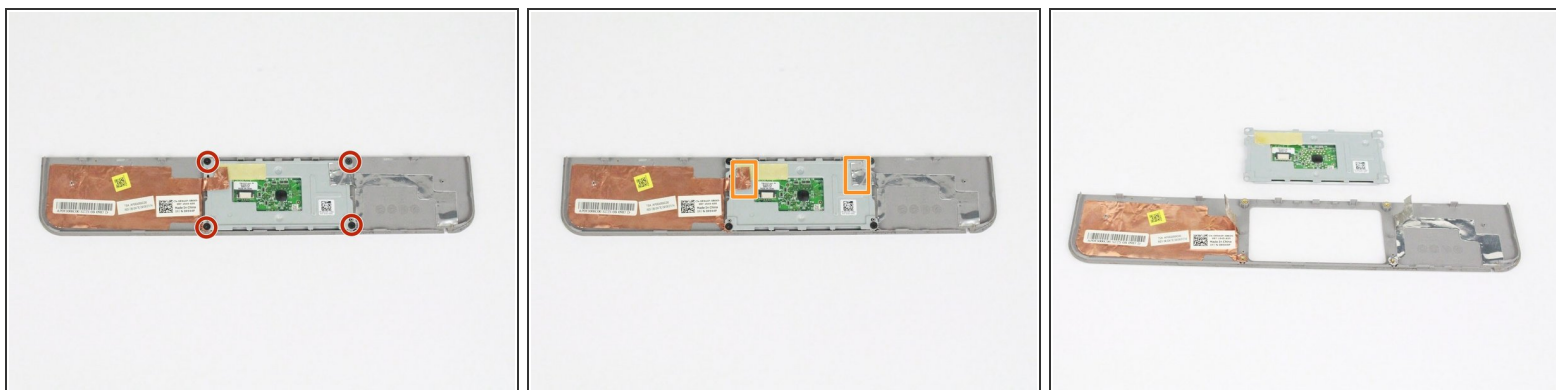
⚠ Carefully remove the palm rest from the computer base to avoid damage to the palm rest.

Step 4



- Gently pull the touchpad cable off the palm rest bracket.
- Lift the rest of the palm rest off the computer base.

Step 5



- Turn the palm rest assembly over.
- Remove the four 3mm Phillips 0 screws that secure the touchpad module to the palm rest.
- Gently lift the copper and silver foil squares on the touchpad.
- Remove the touchpad from the palm rest.

To reassemble your device, follow these instructions in reverse order.