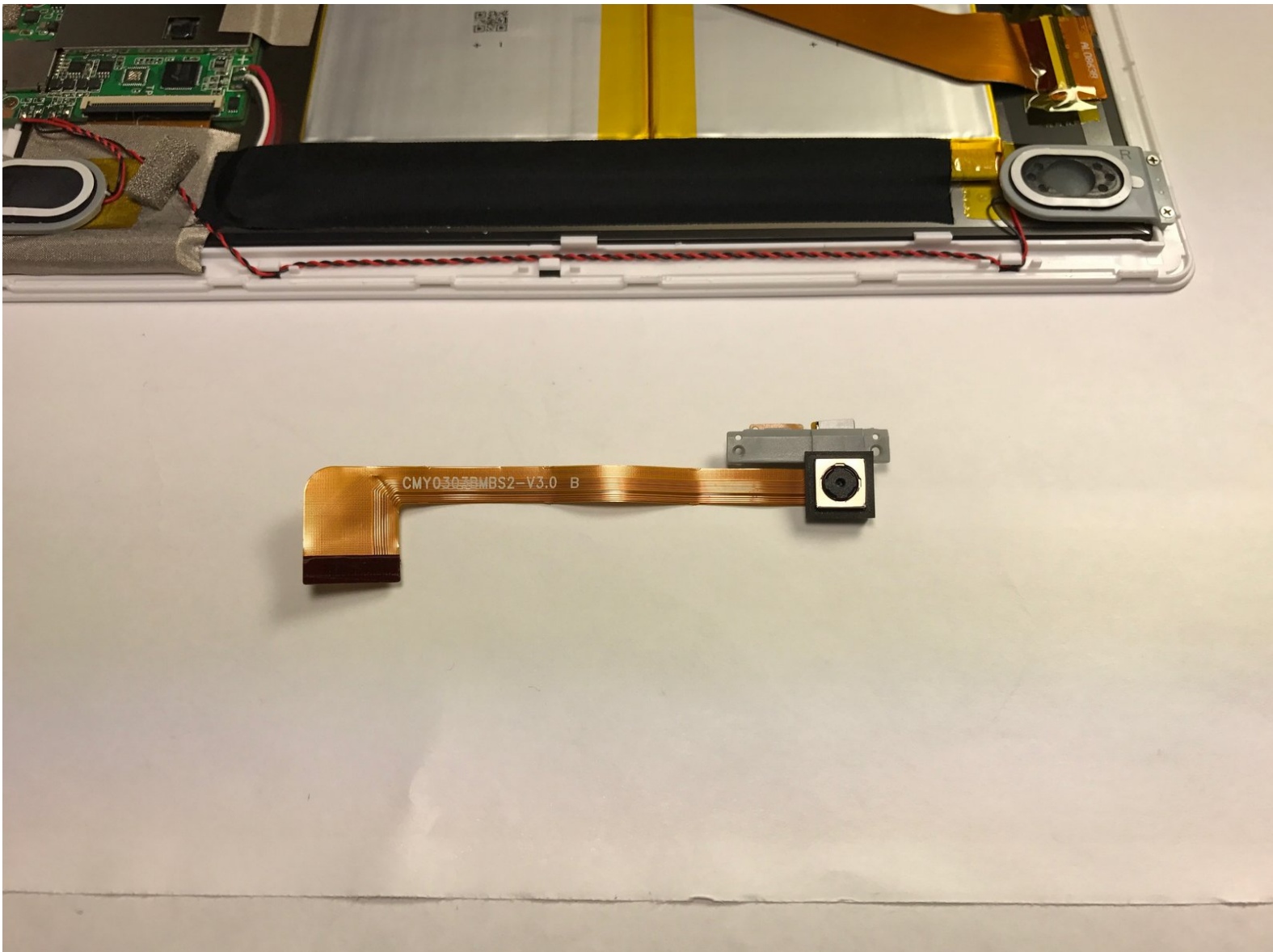




# Insignia Flex 10.1 NS-P10A6100 Camera Replacement

Follow this guide to replace the camera of an Insignia Flex 10.1 NS-P10A6100 tablet.

Written By: Cody Koelemay



---

## INTRODUCTION

If the camera is not working properly or takes distorted photos, you may need to replace the camera. There are no significant hazards to be aware of, but it's always a good idea to be careful when removing parts of your device as to not damage anything.



### TOOLS:

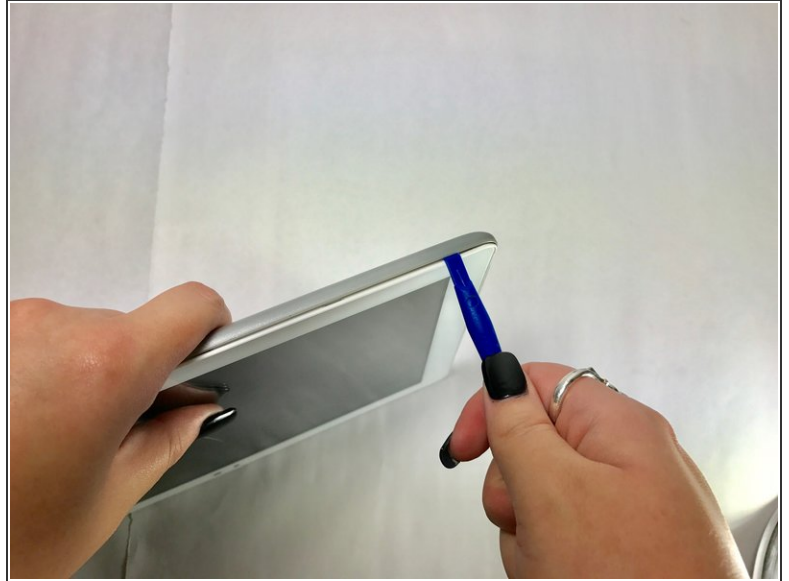
- [iFixit Opening Tools](#) (1)
  - [Phillips #000 Screwdriver](#) (1)
-

## Step 1 — Back Case



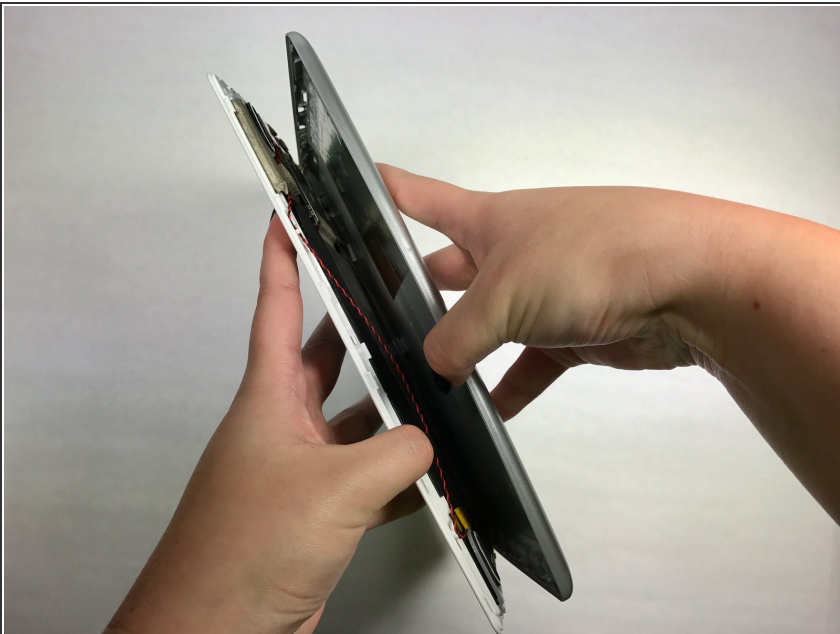
- ⚠ Make sure your tablet is turned off and not connected to a power source to prevent personal injury.
- ⓘ The volume rocker and power button located on the top edge by the camera are not connected pieces and will become free from the device once the front panel is removed from the back case. They are easily put back in place when reassembling the tablet.
- Position the tablet with the top edge by the camera facing down.
- Insert the plastic opening tool between the front panel and back case at the upper left hand corner of the tablet.

## Step 2



- Slide the plastic opening tool along the edge of the tablet between the front panel and back case.
- Repeat this process for the two shorter edges of the tablet leaving the top edge by the camera still snapped in place.

## Step 3



- Using an unfolding motion along the top edge of the tablet, carefully separate the front panel from the back case.

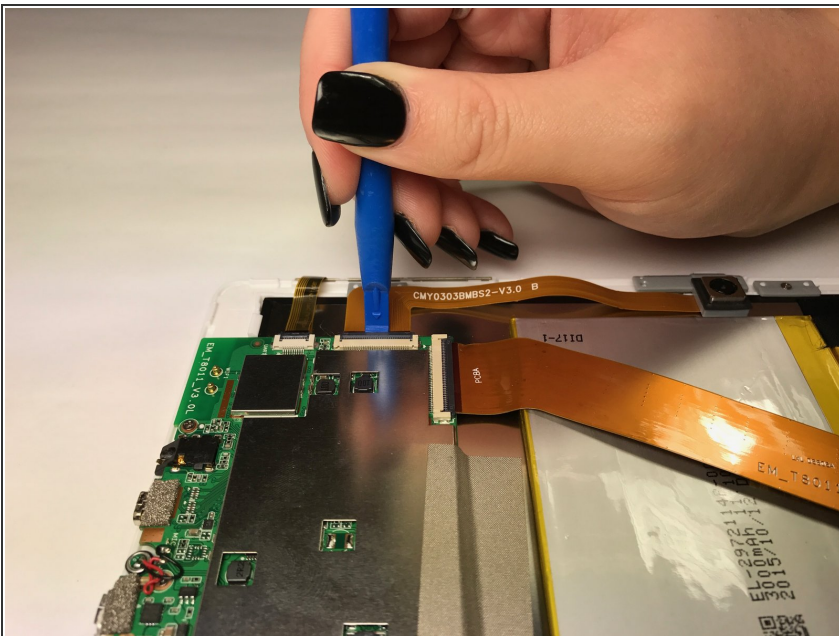


## Step 4 — Camera



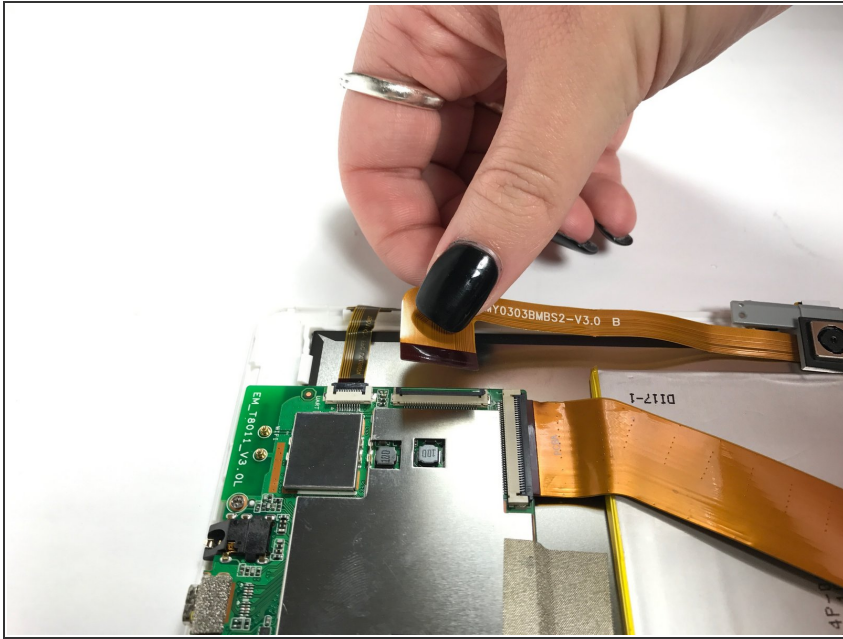
- Using the Phillips #000 screw driver, unscrew the two 4 mm screws securing the camera to the front panel in a counterclockwise direction.
- ⓘ The two screws are very small, so be careful not to lose them after unscrewing them.

## Step 5



- Using the plastic opening tool, lift up the black retaining flap that secures the camera ZIF (zero insertion force) ribbon connector to the motherboard.

## Step 6



- Pull the camera ZIF (zero insertion force) ribbon connector out from underneath the black retaining flap.
- Remove the camera.

The camera is now free from the device and can be replaced. To reassemble your device, follow these instructions in reverse order.