



Dell Inspiron 1100 Battery Replacement

This guide will demonstrate how to replace the battery on the Dell Inspiron 1100.

Written By: Alexander Pacheco



INTRODUCTION

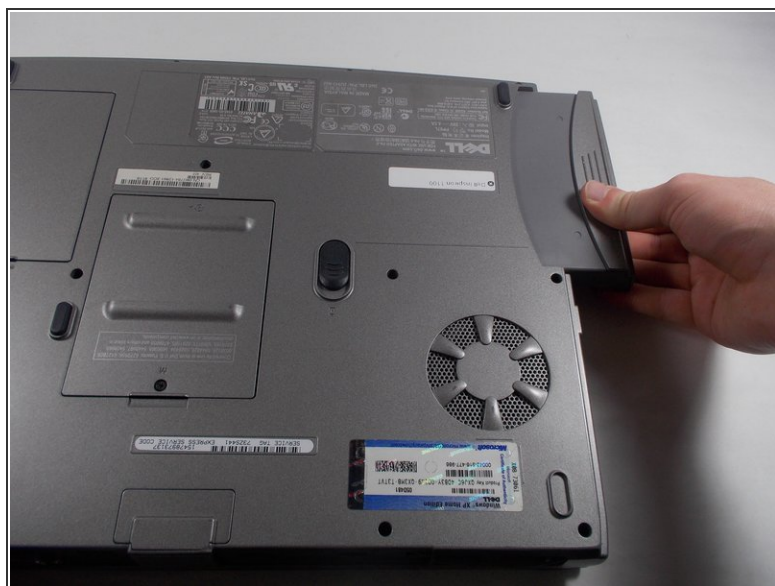
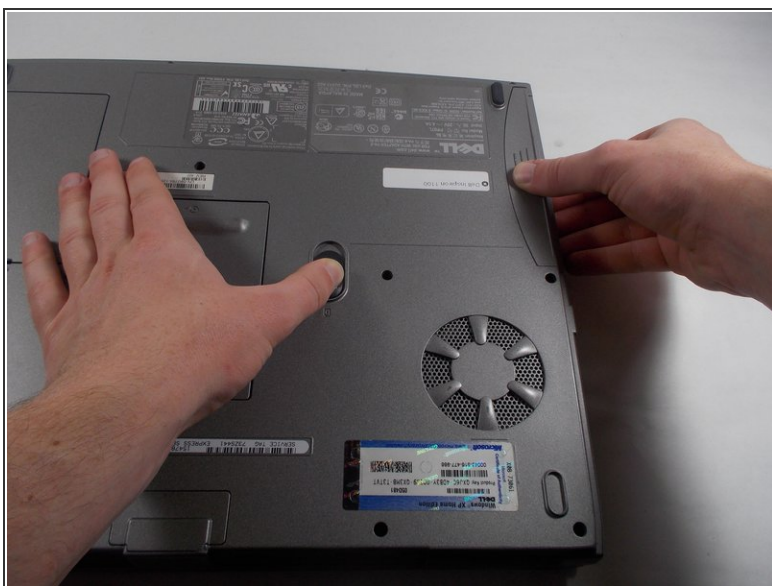
The battery is vital to running the Dell Inspiron 1100. However, it is normal that the battery may need to be replaced over a certain period of use. There was also a recall for the battery in 2011, which would require its replacement.

Step 1 — Battery



- Locate the black switch on the back side of the device. Slide it to the unlocked position and hold it in place.

Step 2



- While holding the switch down, pull the battery out of the laptop, located in the upper right-hand corner.

To reassemble your device, follow these instructions in reverse order.

This document was generated on 2020-11-28 05:24:19 AM (MST).

