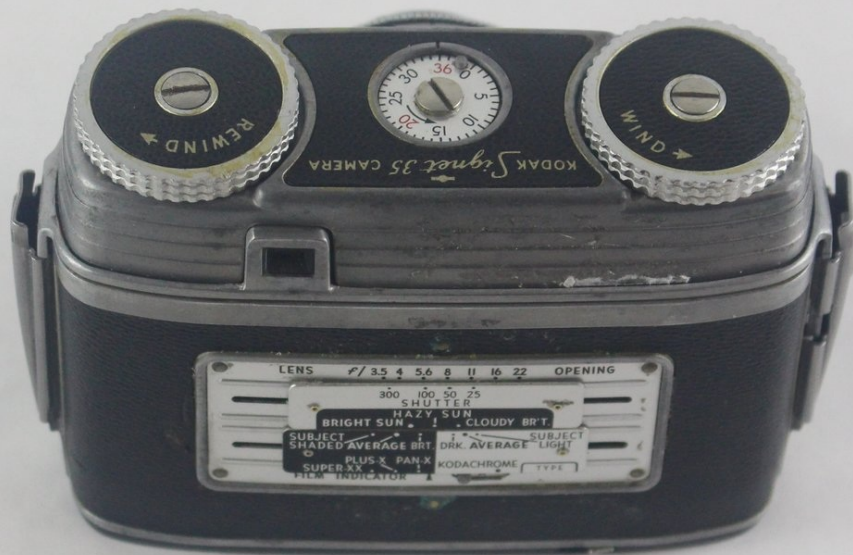




Kodak Signet 35 Dials Replacement

If the wind and rewind dials on the top of the...

Written By: Michael Borkland



INTRODUCTION

If the wind and rewind dials on the top of the camera are hard to turn or visibly damaged, they may need to be adjusted or replaced. This guide will walk you through the steps of removing the dials. Please make sure you have all the necessary tools before you start.

TOOLS:

[Flathead 3/32" or 2.5 mm Screwdriver](#) (1)

Step 1 — Dials



- While holding the wind dial with one hand, remove the [2.8mm flathead](#) screw that holds it in place with the 2.5mm flathead screwdriver.

Step 2



- While holding the rewind dial with one hand, remove the 2.8mm flathead screw that holds it in place with the 2.5mm flathead screwdriver.

To reassemble your device, follow these instructions in reverse order.