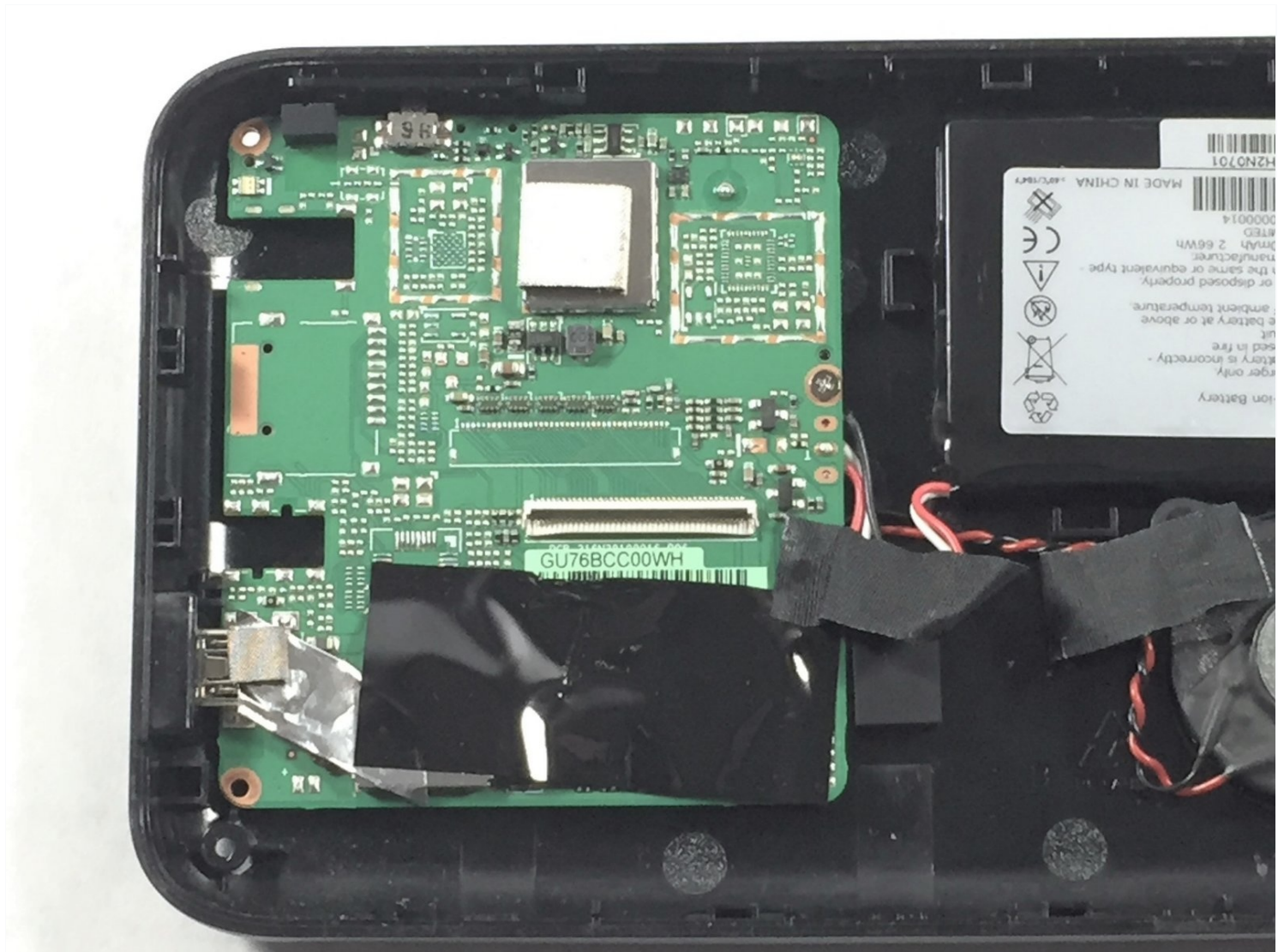




Magellan RoadMate 5236T-LM Motherboard Replacement

It is recommended to have had some experience...

Written By: Jared Fadding



INTRODUCTION

It is recommended to have had some experience soldering before attempting this replacement.

TOOLS:

[iFixit Opening Tool](#) (1)

[Phillips #000 Screwdriver](#) (1)

[Soldering Iron](#) (1)

Step 1 — Back Cover



- Place the device face down on a flat surface.
- Remove the four 5mm screws at each corner using a #000 Phillips head screwdriver.

Step 2



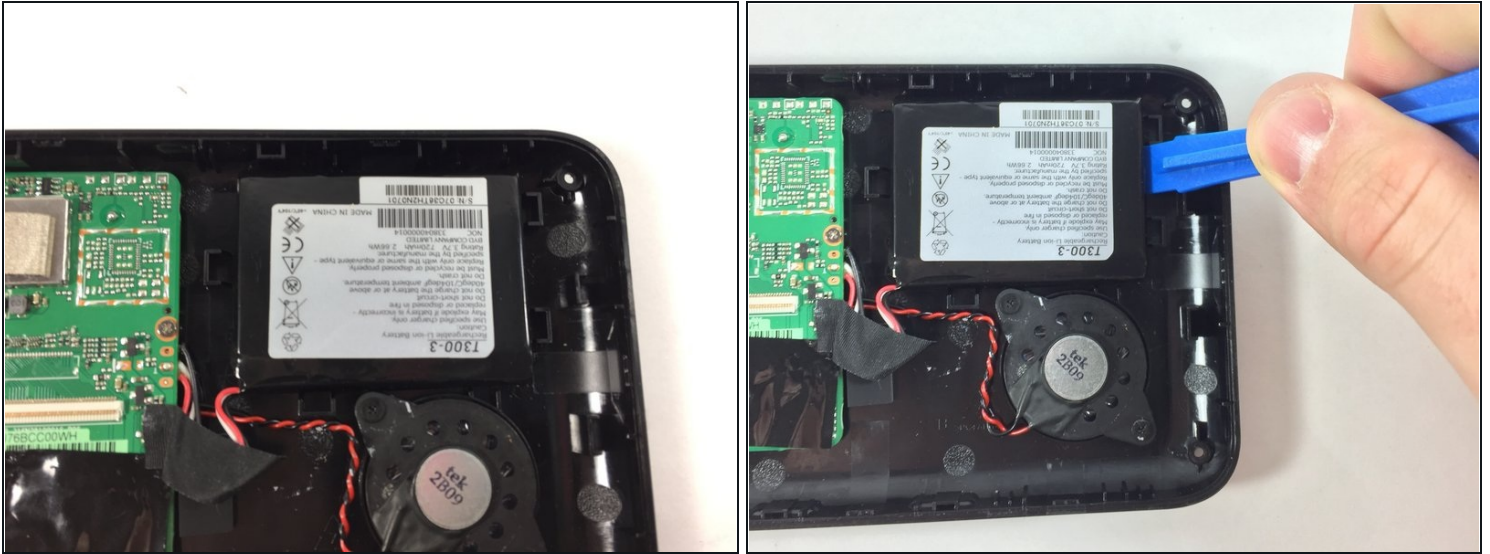
- Gently wedge a plastic opening tool into the seam along the side of the device.
- Slide the tool along the seam to pry apart the front and back covers.

Step 3



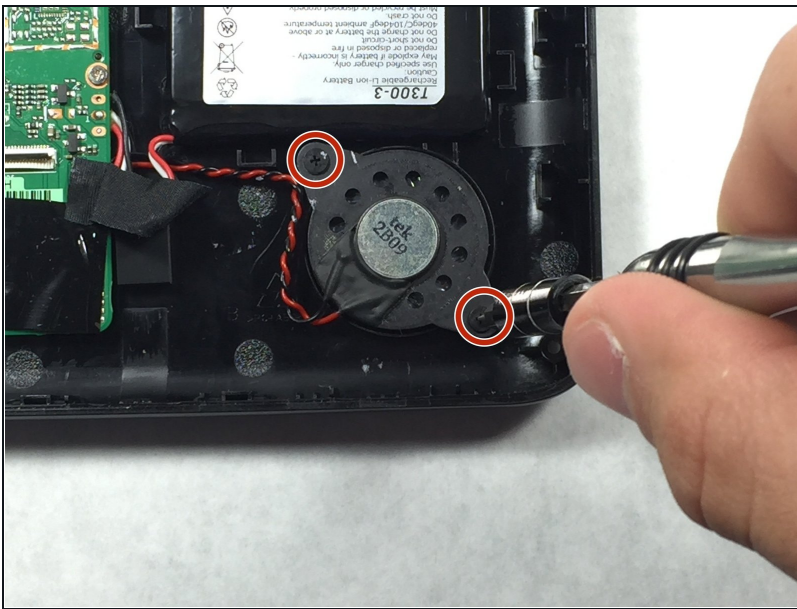
- A ribbon cable attaches the display screen and the motherboard via a ZIF connector. Remove the tape covering where the ZIF connector connects to the mother board.
- Use [tweezers](#) to disconnect the ZIF connector from the motherboard.
- ① The ZIF connector may disconnect itself from the motherboard when removing the tape.

Step 4 — Battery



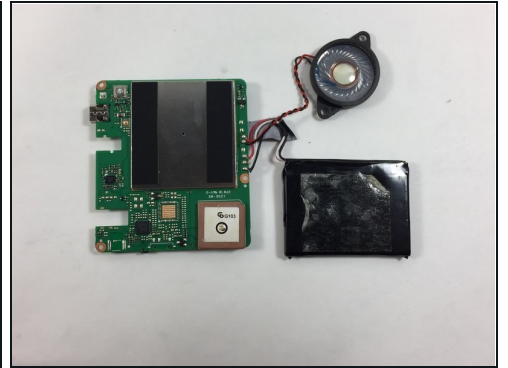
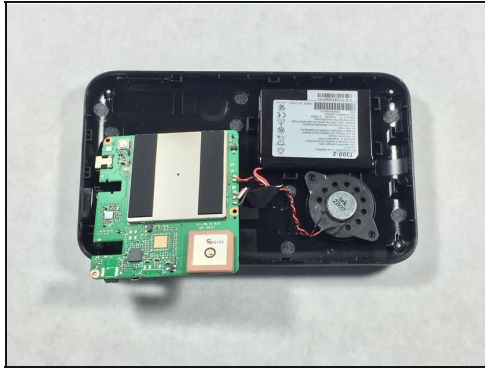
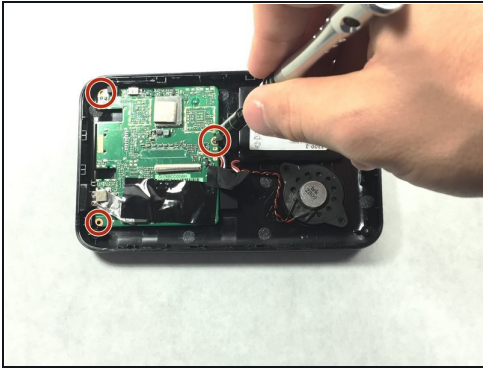
- Lay the back panel on a flat surface with the battery, motherboard, and speaker facing up.
- Use a plastic opening tool to gently pull the battery away from the back panel in order to remove the adhesive that helps the battery stick to the panel.

Step 5



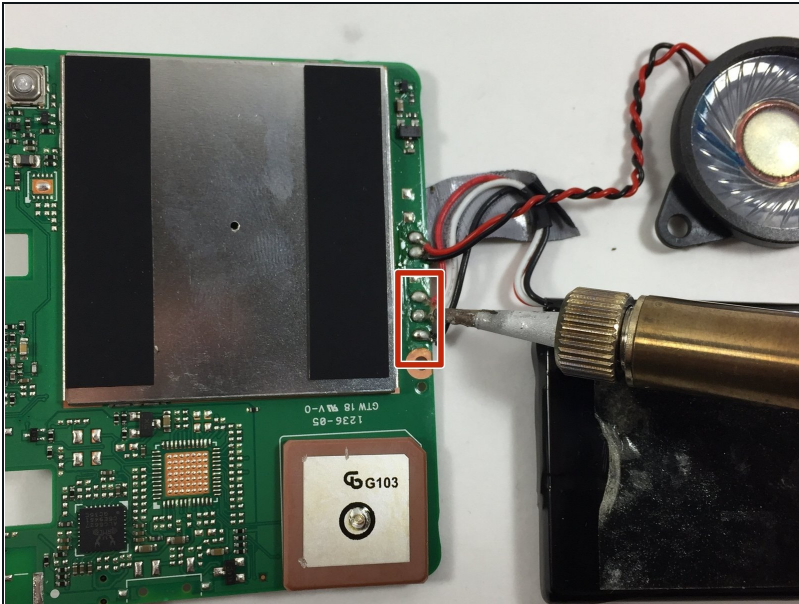
- Unscrew the two 5mm screws using a Phillips #000 screwdriver.

Step 6



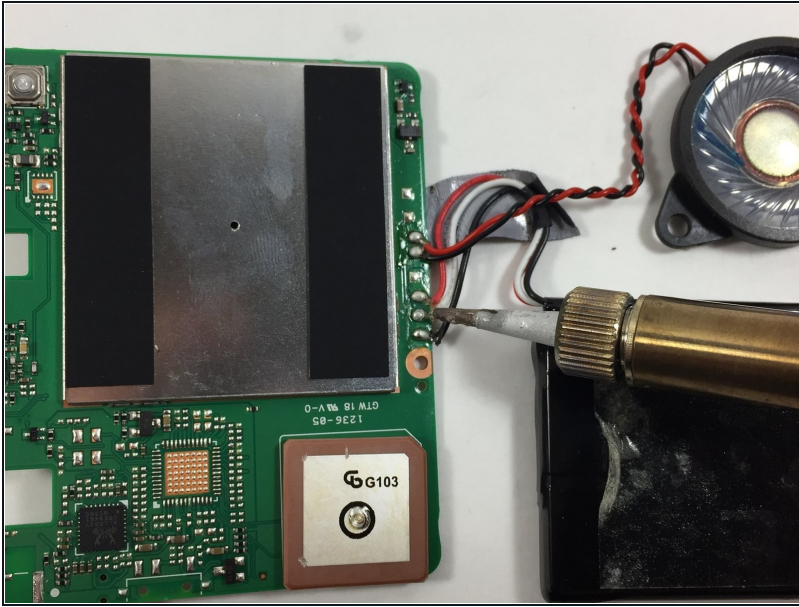
- Use a Phillips #000 screwdriver to remove three 5mm screws that hold the motherboard down to the back panel.
- Remove the battery, speaker and motherboard. Place them on a flat surface upside down.

Step 7



- Use a soldering iron to desolder the 3 wires that connect the battery to the motherboard.
- ① Follow the [How to Solder and Desolder Connections](#) guide for help.

Step 8 — Motherboard



- Using the soldering iron, carefully desolder the two wires connected to the speaker.
- The motherboard should now be separated from both the battery and the speaker.

To reassemble your device, follow these instructions in reverse order.