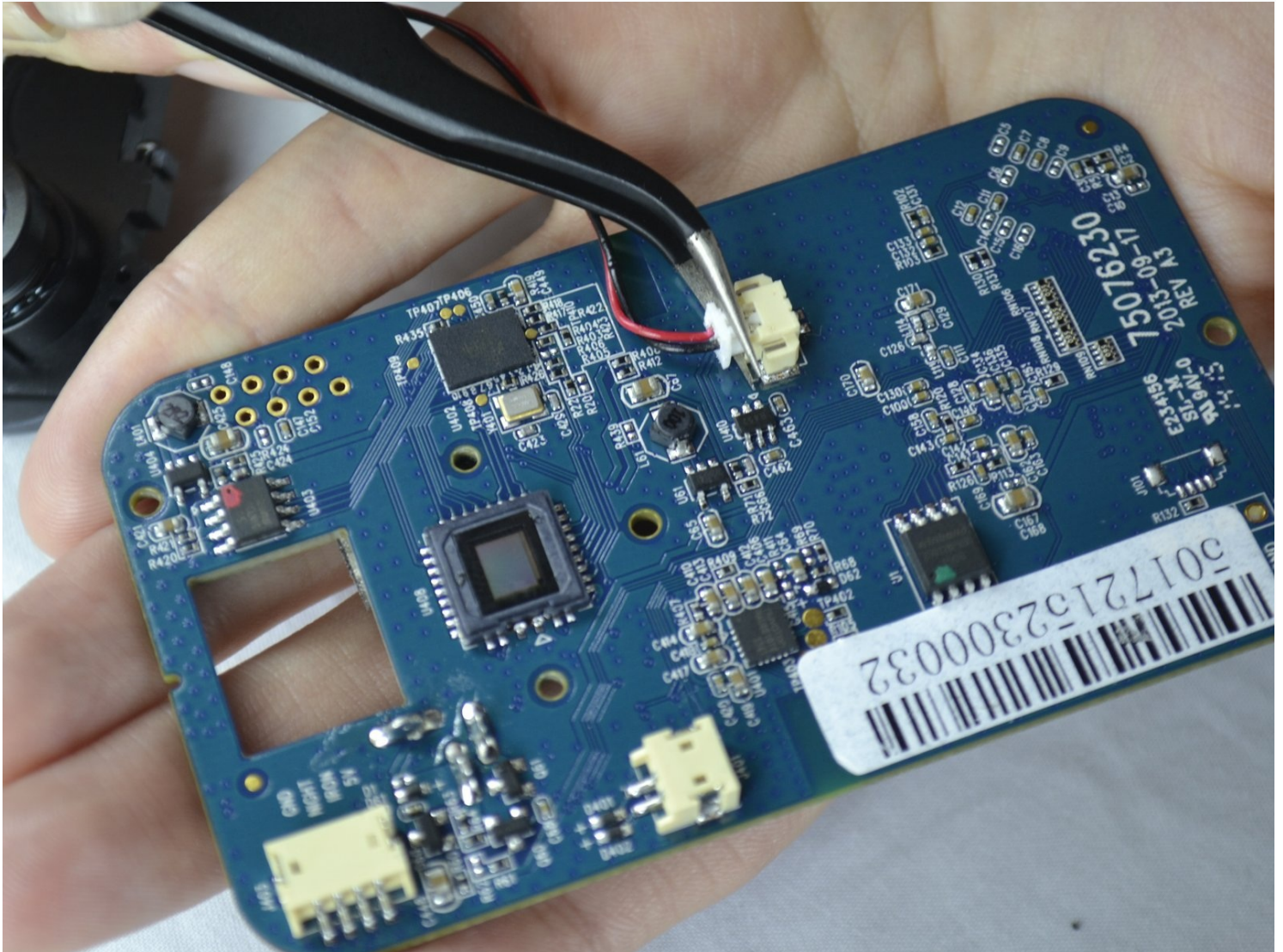




Belkin NetCam HD Circuit Board Replacement

This guide will walk you through how to replace...

Written By: Destinie DiazVerdejo



INTRODUCTION

This guide will walk you through how to replace the whole circuit board on the NetCam.

TOOLS:

[iFixit Opening Tool](#) (1)

[Adjustable Wrench](#) (1)

[Phillips #0 Screwdriver](#) (1)

[Tweezers](#) (1)

Step 1 — Case



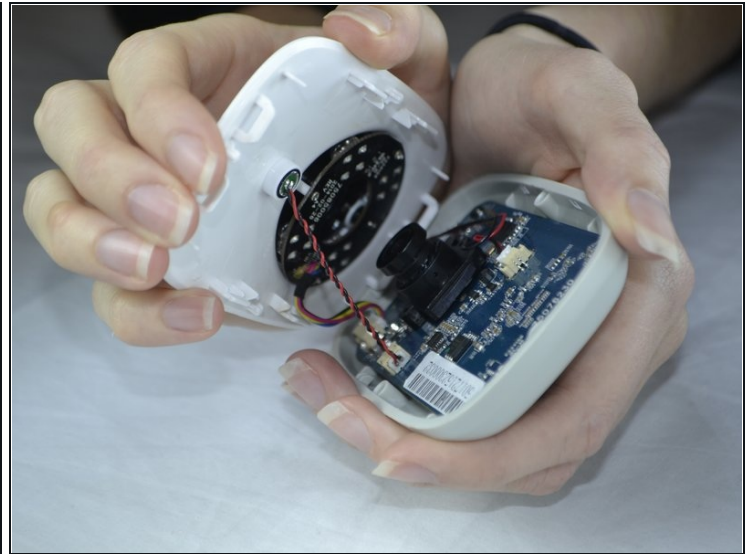
- Use a wrench to loosen up the stand from the back in order to hold the NetCam more comfortably.

Step 2



- Work a plastic opening tool into the seam and pry the face plate away from the back panel.

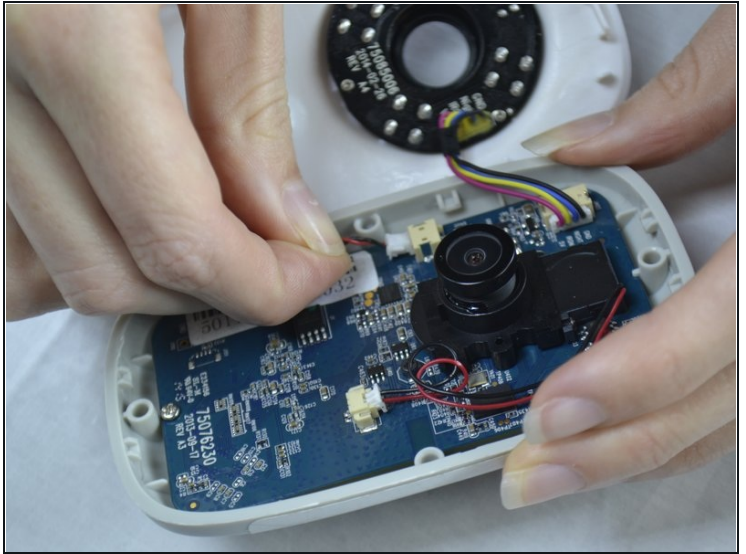
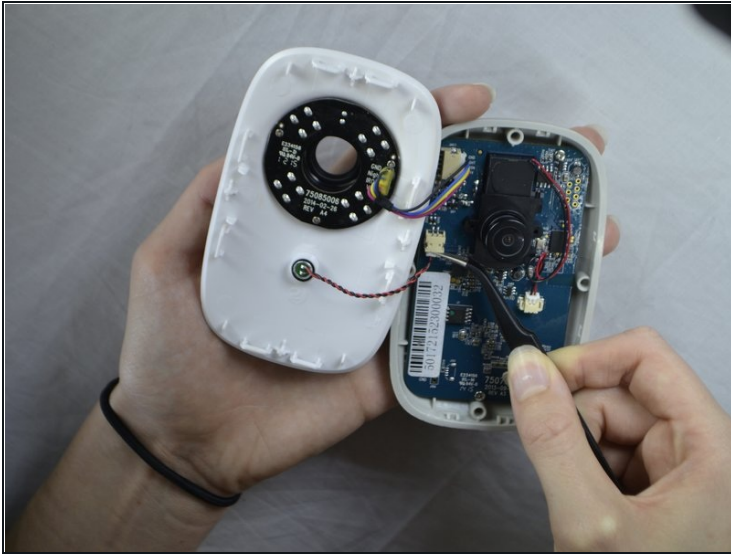
Step 3



- Use pressure to separate the covers.

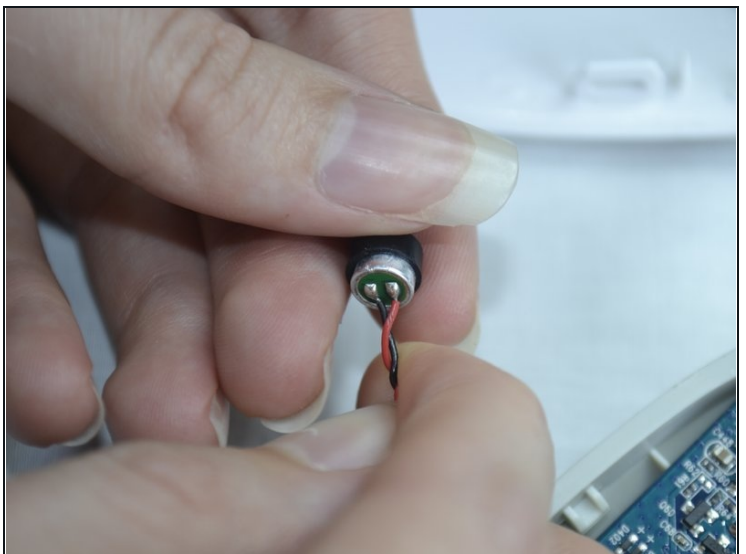
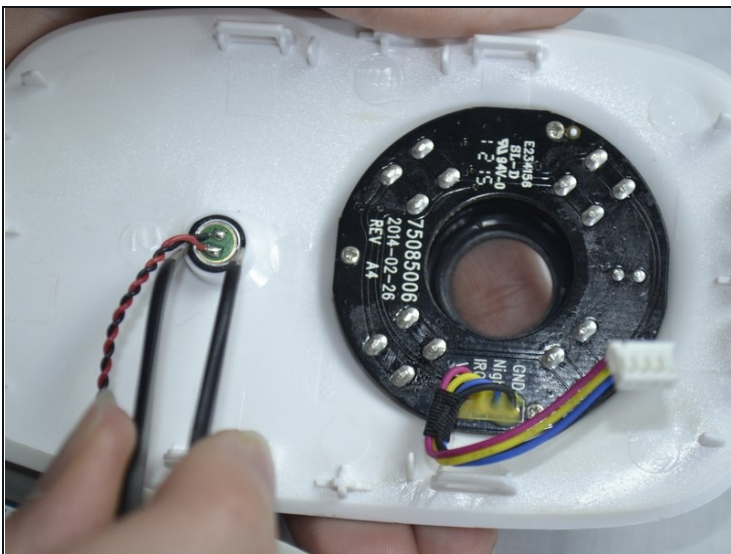
⚠ When pulling the device apart, separate from the bottom up in order to avoid pulling the wiring at the top apart.

Step 4 — Microphone



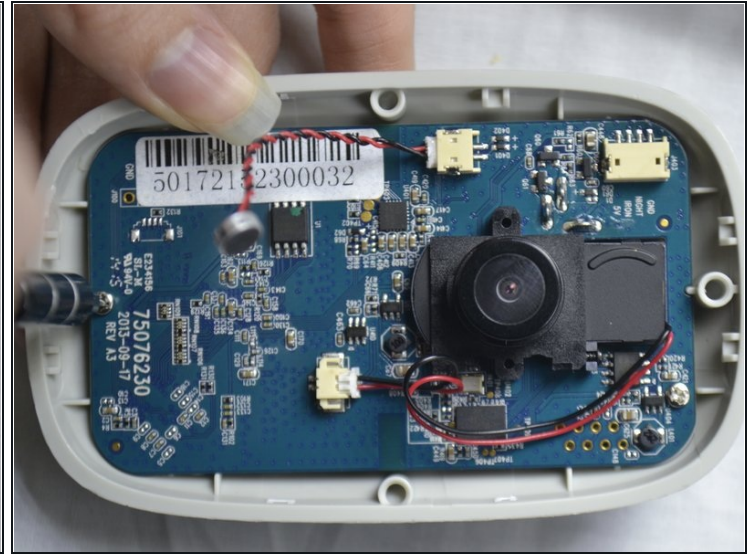
- Use [tweezers](#) to gently pull out the white attachment from the port.
- Use your fingers to pull out the white attachment from the tan port on the front of the board a little.

Step 5



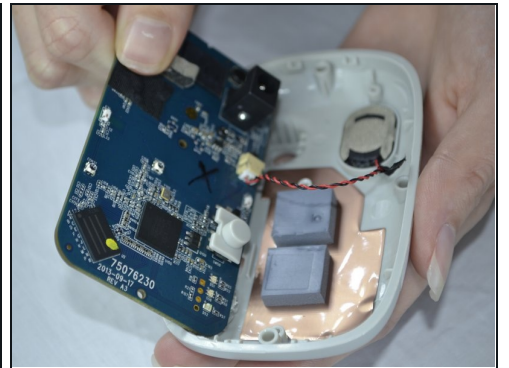
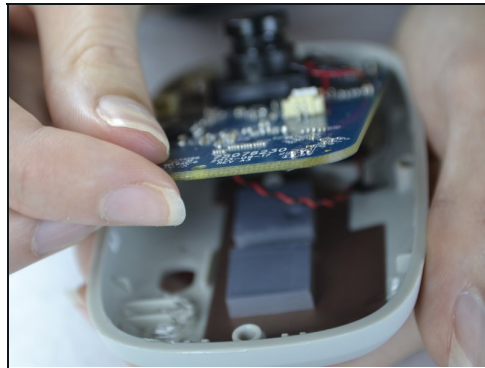
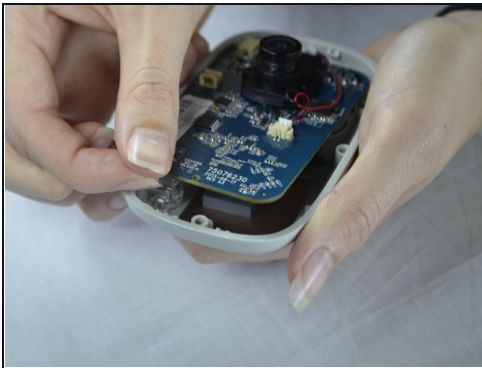
- Use a pair of tweezers to wedge between the mic and the rubber guard to remove the mic from the front cover.
- ① If the rubber guard comes off with the mic just remove the guard from mic and place back on the front cover.

Step 6 — Speaker



- Use a Phillips #0 screwdriver to take out the two 1.2 mm screws on the board.

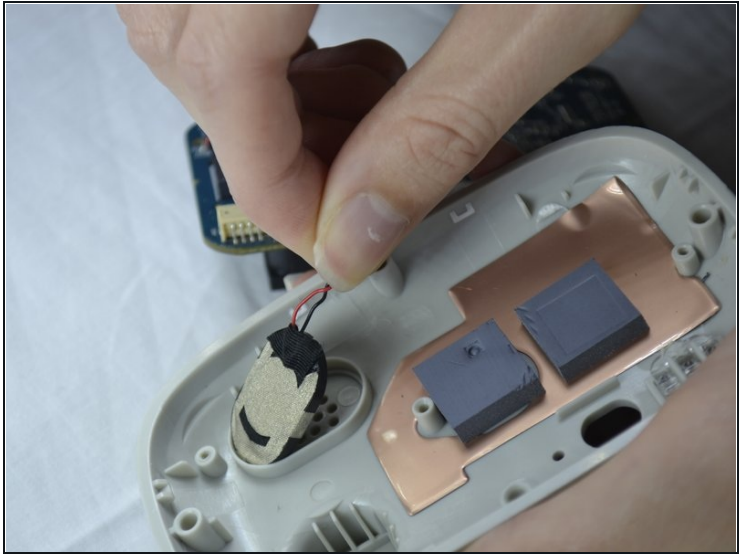
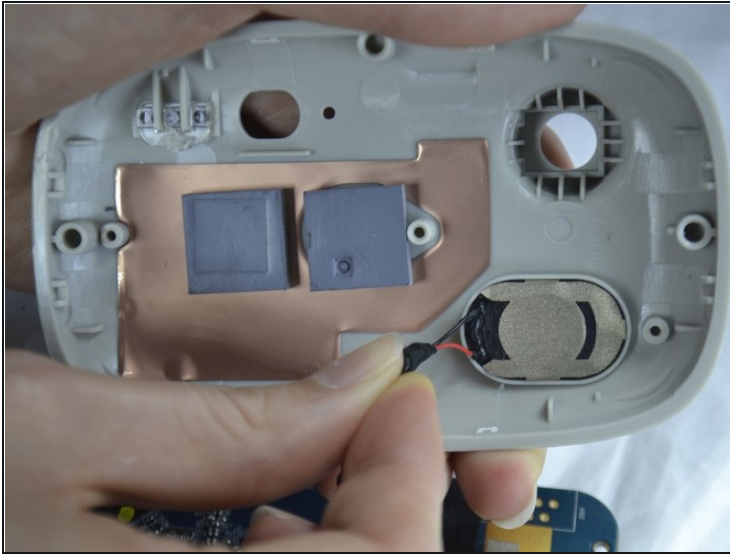
Step 7



- With your fingers, pull the circuit board out of the back casing.

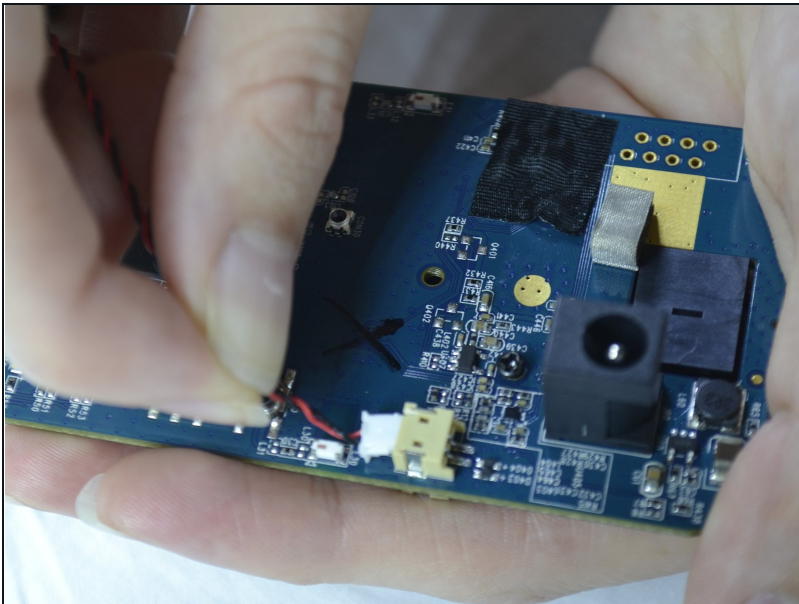
⚠ When pulling the board up be sure to do so carefully so you do not break the cord which is attached on the back side.

Step 8



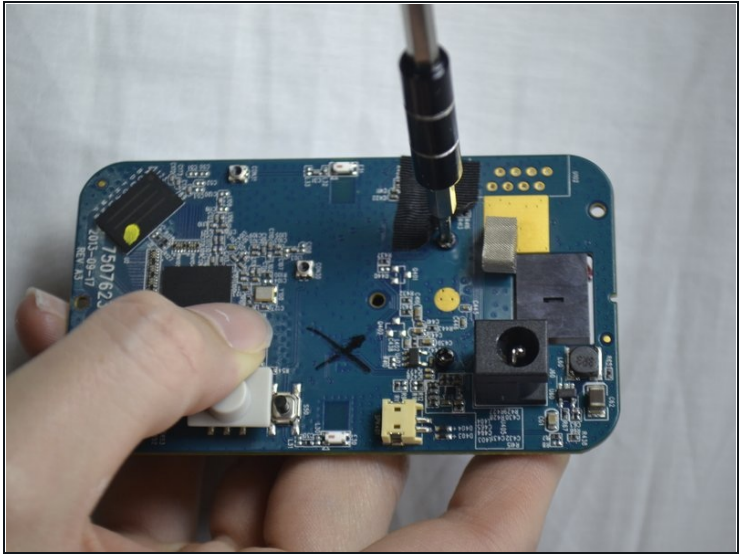
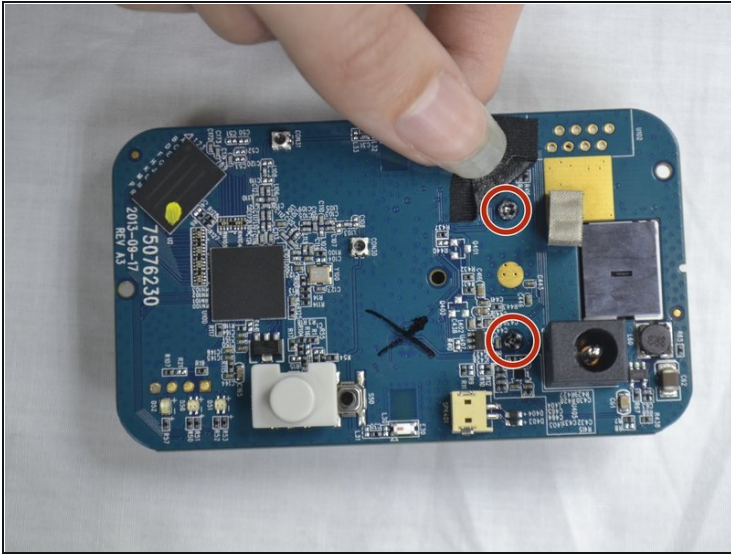
- Gently pull the speaker out of the holder from the back of the cover.

Step 9



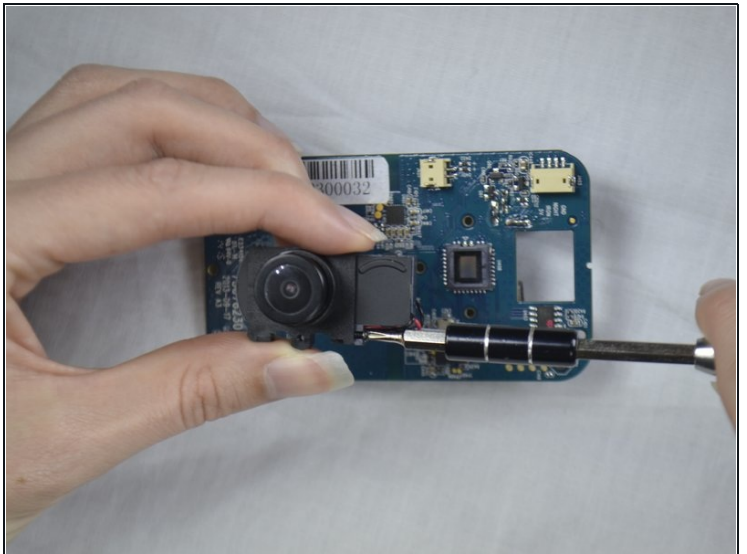
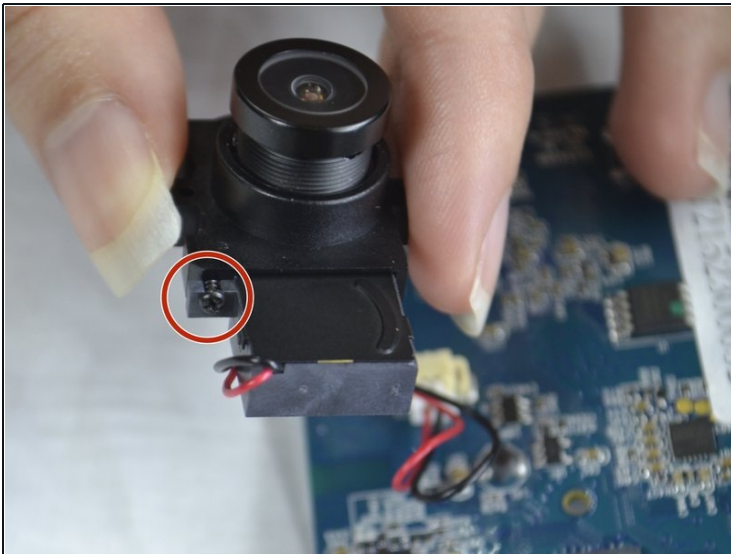
- The speaker wires are attached with the board. It can be unattached gently by pulling out the white attachment from the port.

Step 10 — Lens Piece



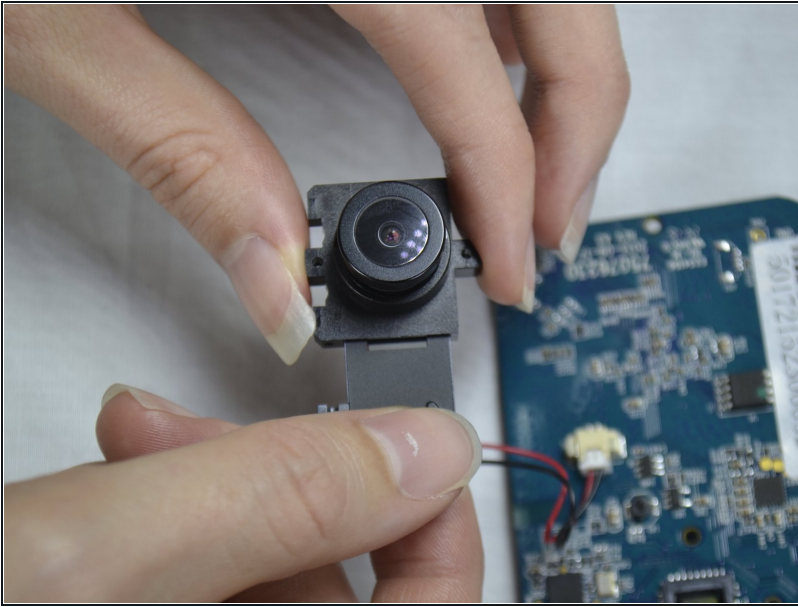
- Flip the circuit board to the back side.
- Fold down the tape with your finger.
- With the Phillips #0 screwdriver, unscrew the two 1.2 mm screws.

Step 11



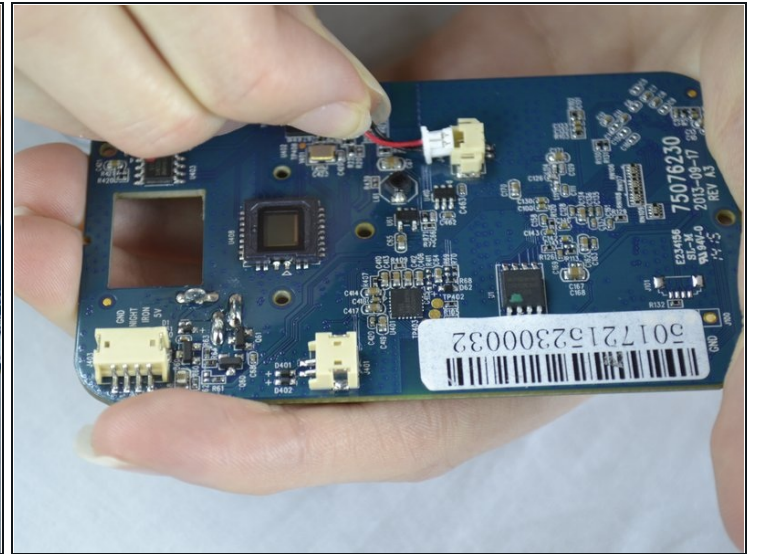
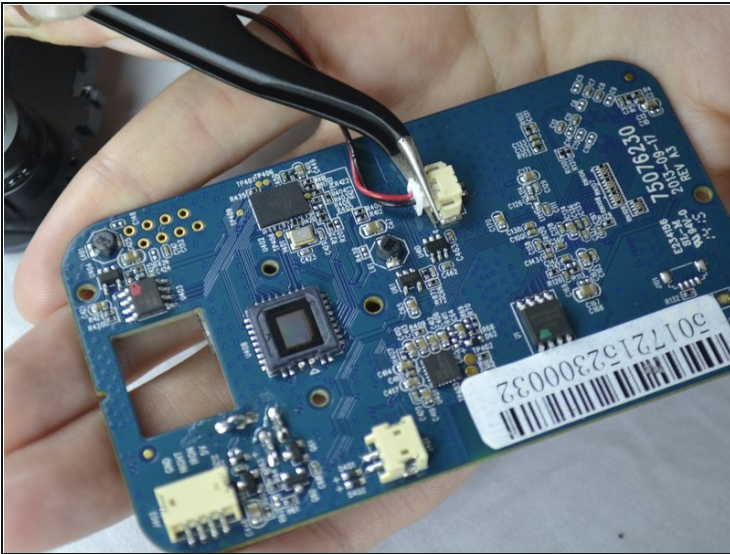
- Flip the circuit board back to the other side.
- Unscrew the screw with a Phillips #0 screw driver.

Step 12



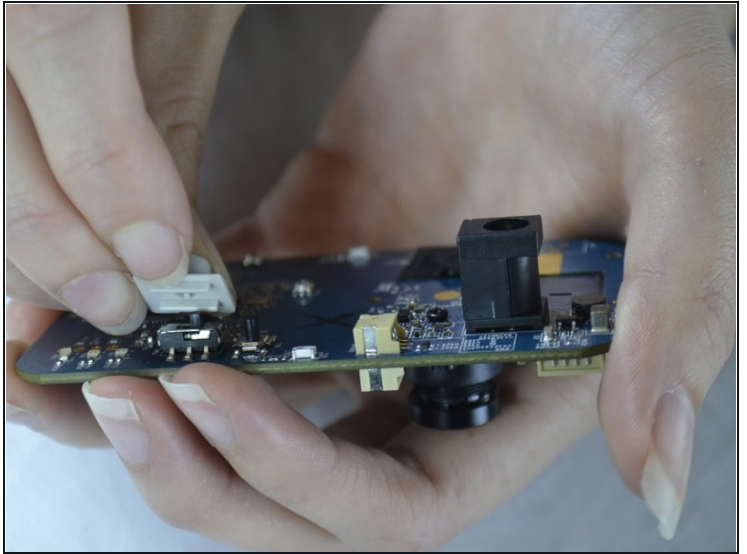
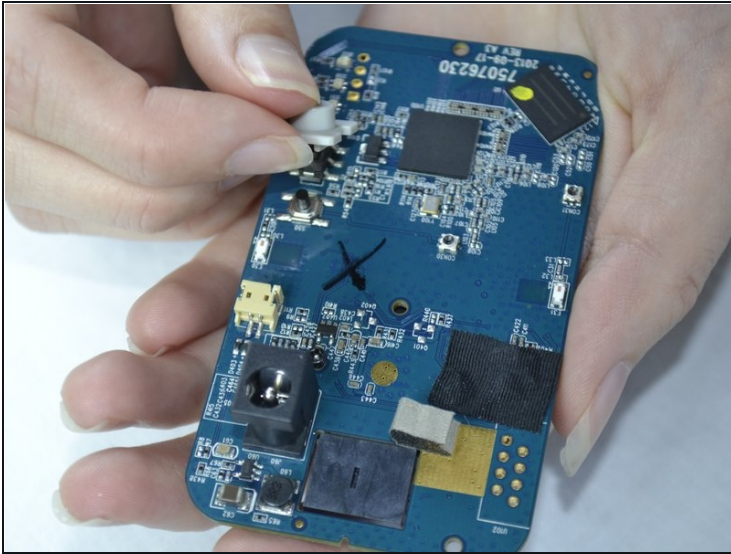
- Slide the attached piece from the lens holder device.

Step 13



- Use the [tweezers](#) to pull the white attachment out from the port a little.
- Then, take your fingers and gently pull the white attachment out from the tan port.

Step 14 — Switch Cover



- On the back of the board pull the switch slowly upward to take it off.

To reassemble your device, follow these instructions in reverse order.