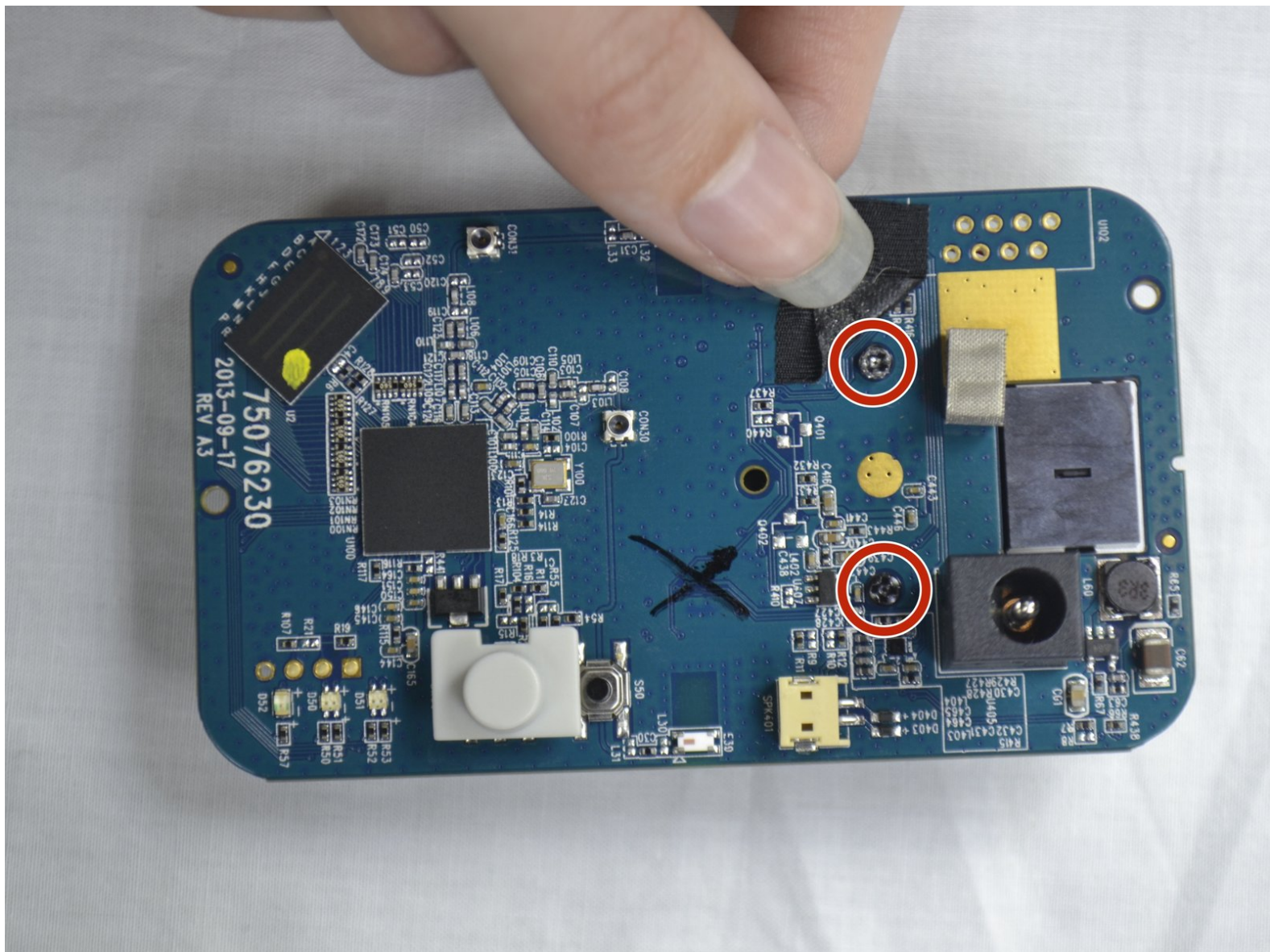




# Belkin NetCam HD Lens Piece Replacement

This guide will show you the steps in replacing the lens piece in your Belkin NetCam HD+.

Written By: Destinie DiazVerdejo



# INTRODUCTION

This guide will walk you through how to replace the lens piece on the NetCam.



## TOOLS:

- [iFixit Opening Tools](#) (1)
  - [Adjustable Wrench](#) (1)
  - [Phillips #0 Screwdriver](#) (1)
  - [Tweezers](#) (1)
-

## Step 1 — Case



- Use a wrench to loosen up the stand from the back in order to hold the NetCam more comfortably.

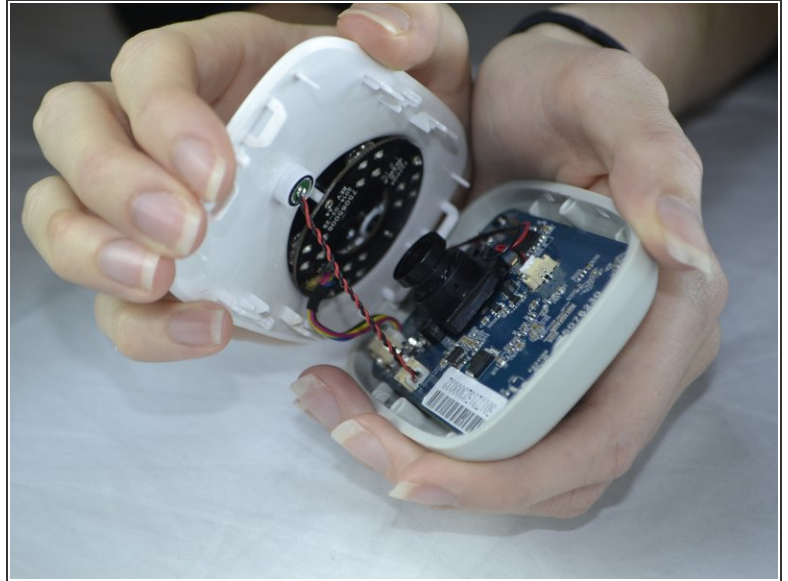
## Step 2



- Work a plastic opening tool into the seam and pry the face plate away from the back panel.



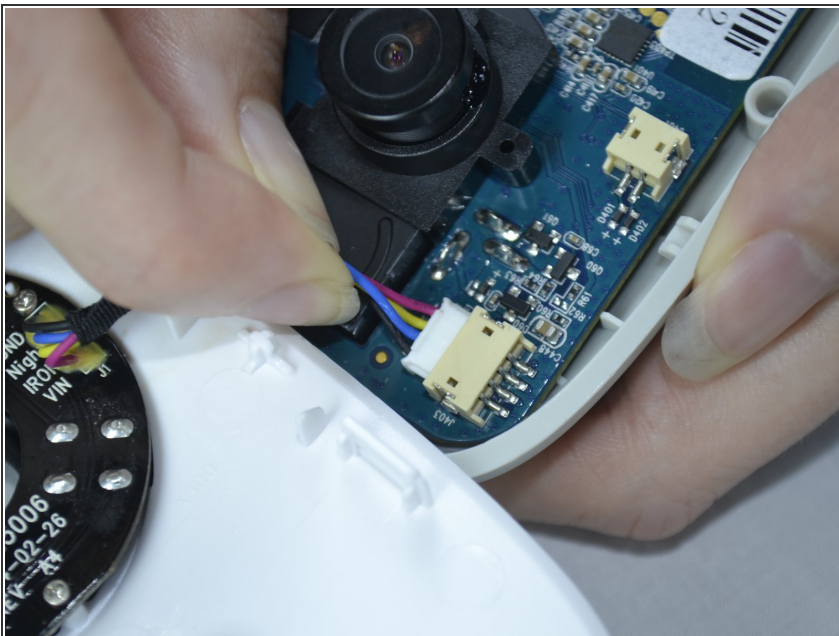
### Step 3



- Use pressure to separate the covers.

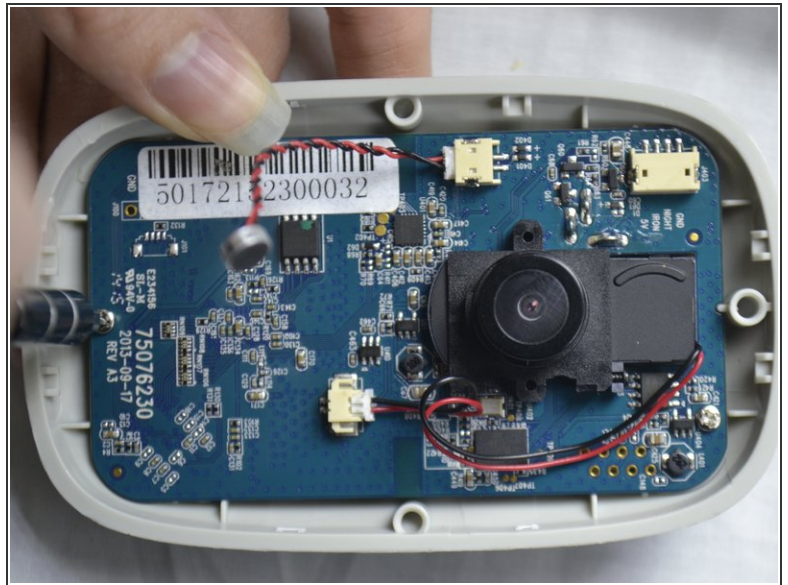
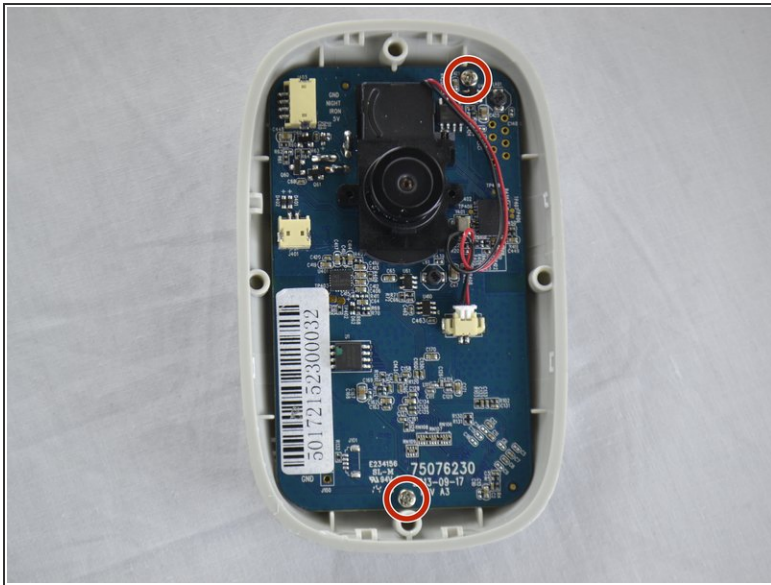
⚠ When pulling the device apart, separate from the bottom up in order to avoid pulling the wiring at the top apart.

### Step 4 — Front Casing



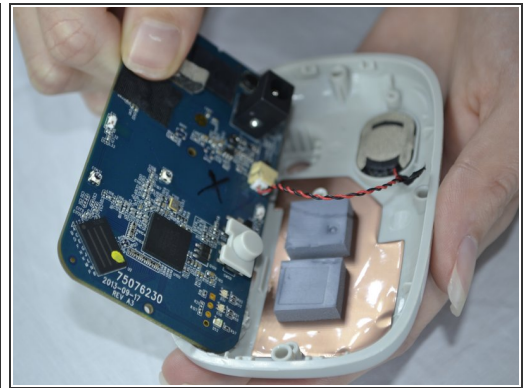
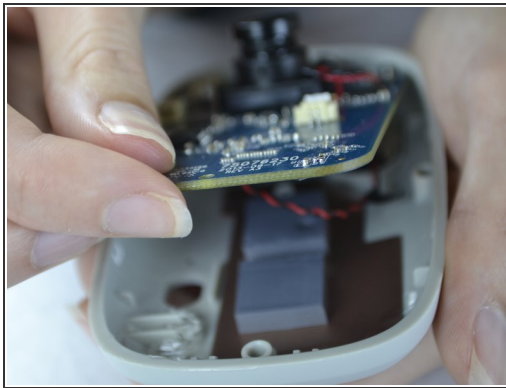
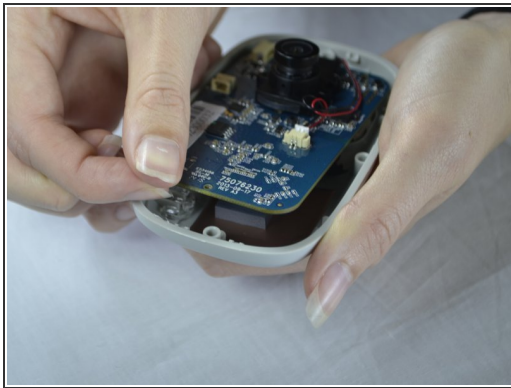
- Carefully use your fingers to gently pull out the white attachment from the tan colored part.

## Step 5 — Speaker



- Use a Phillips #0 screwdriver to take out the two 1.2 mm screws on the board.

## Step 6

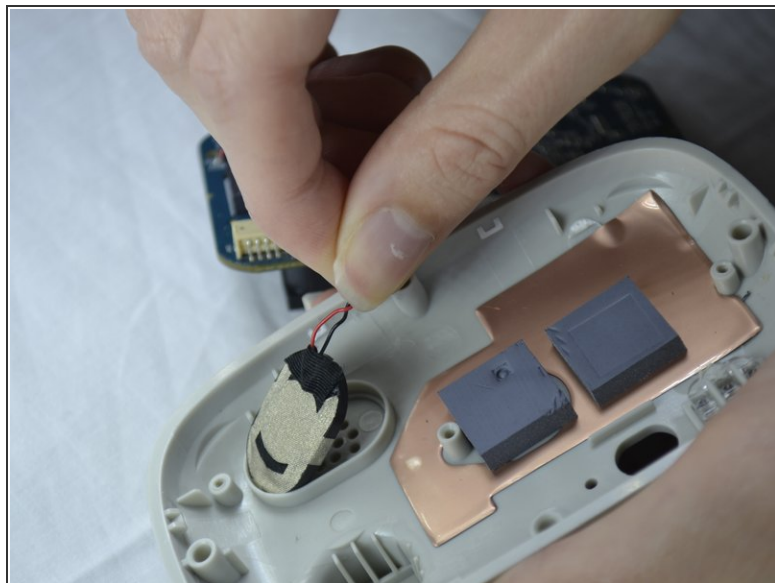
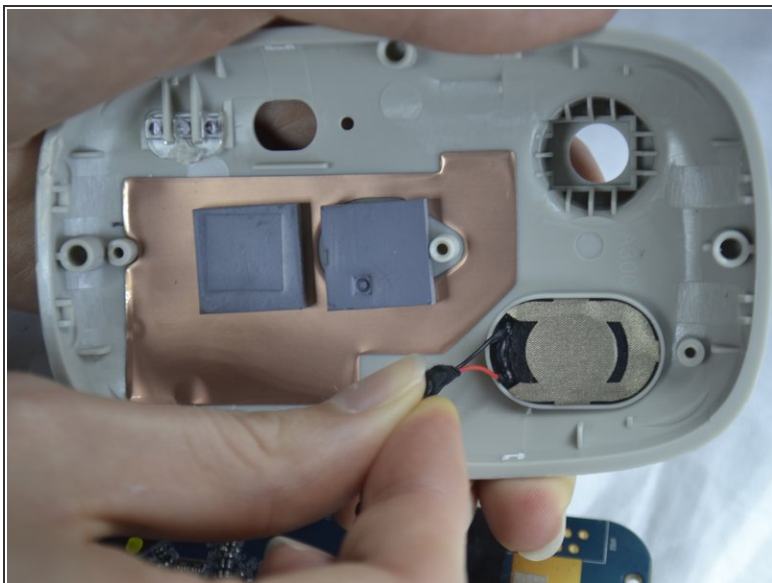


- With your fingers, pull the circuit board out of the back casing.

⚠ When pulling the board up be sure to do so carefully so you do not break the cord which is attached on the back side.

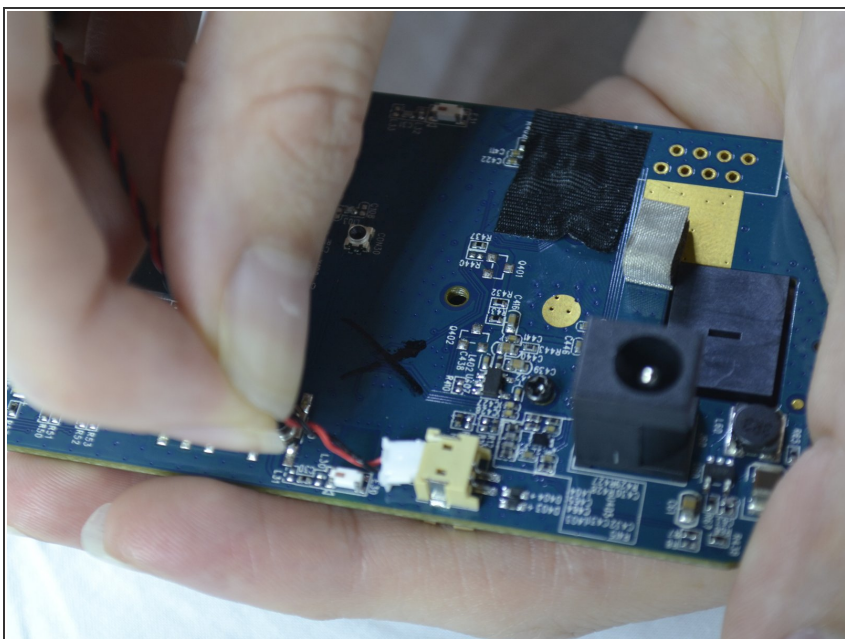


## Step 7



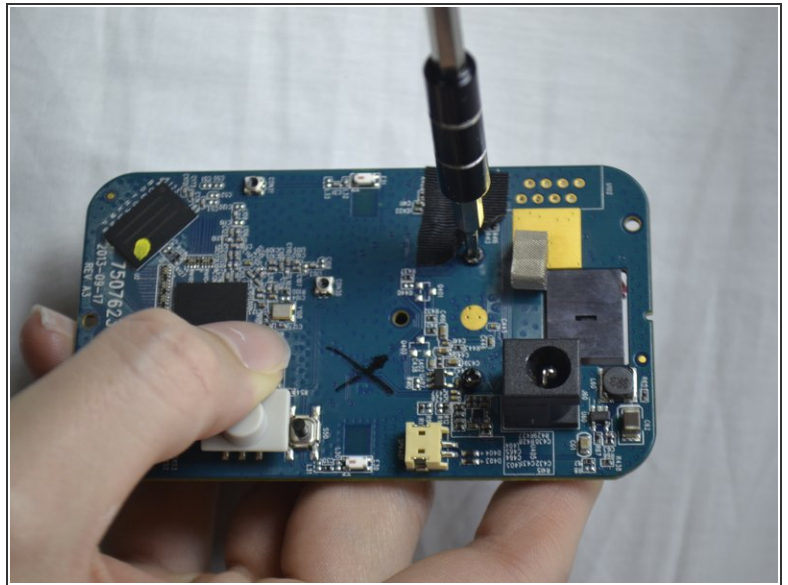
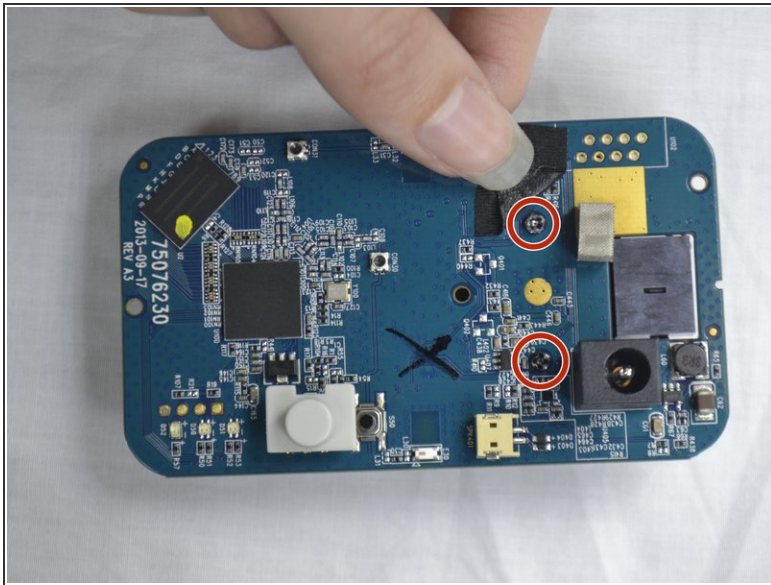
- Gently pull the speaker out of the holder from the back of the cover.

## Step 8



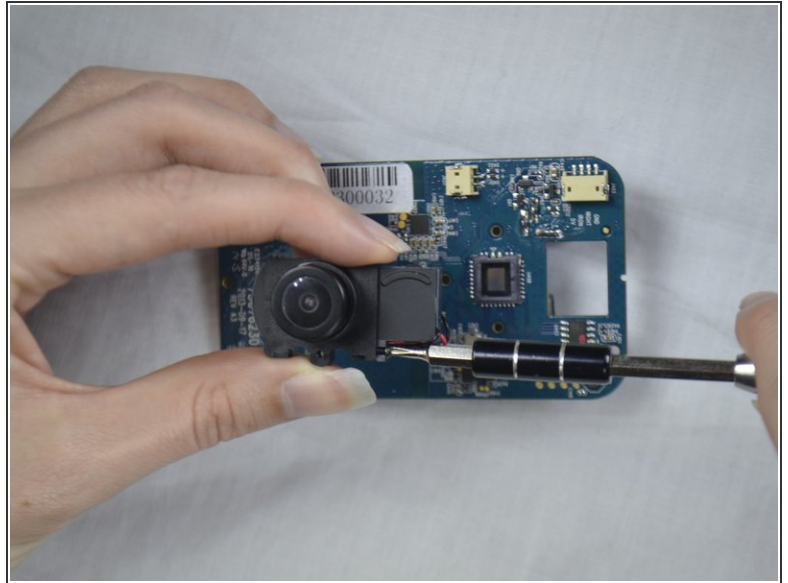
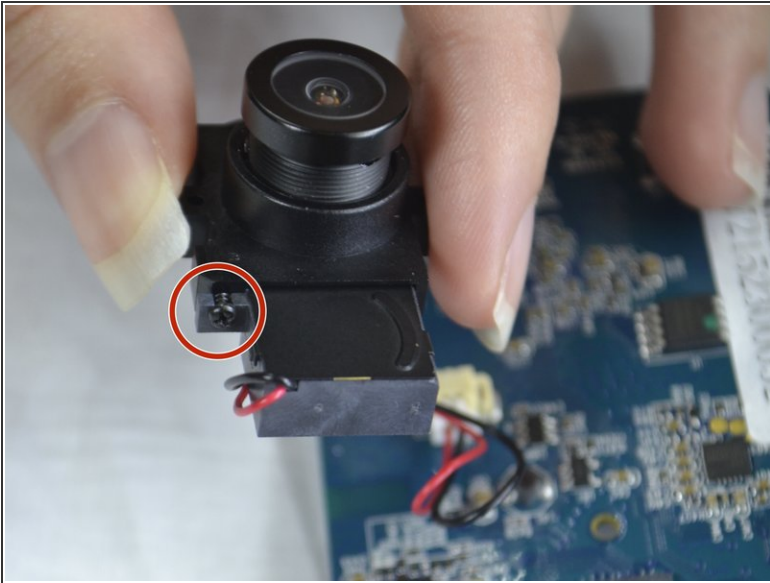
- The speaker wires are attached with the board. It can be unattached gently by pulling out the white attachment from the port.

## Step 9 — Lens Piece



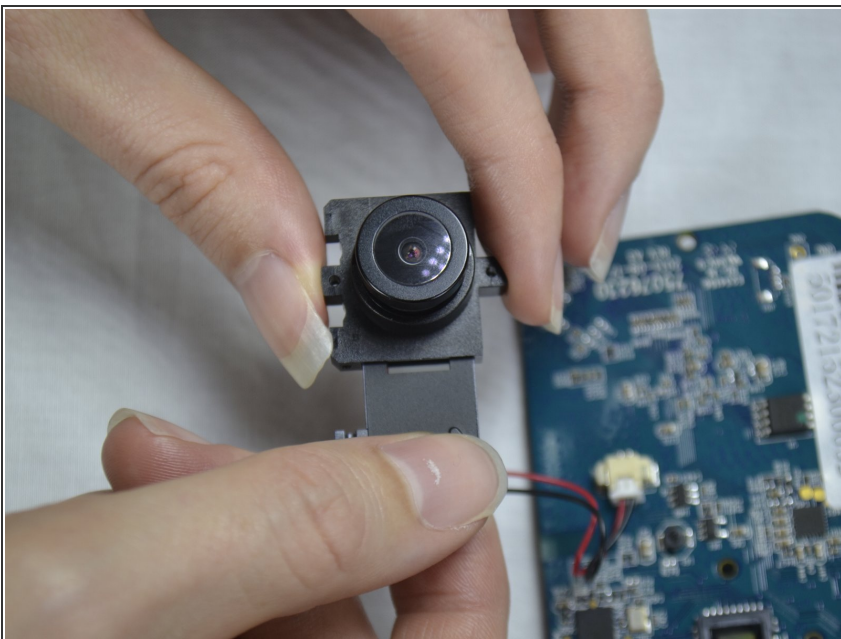
- Flip the circuit board to the back side.
- Fold down the tape with your finger.
- With the Phillips #0 screwdriver, unscrew the two 1.2 mm screws.

## Step 10



- Flip the circuit board back to the other side.
- Unscrew the screw with a Phillips #0 screw driver.

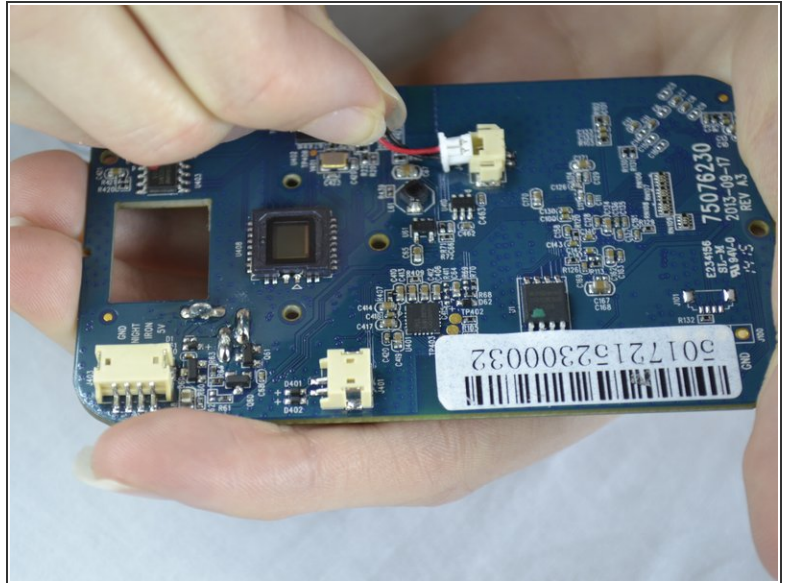
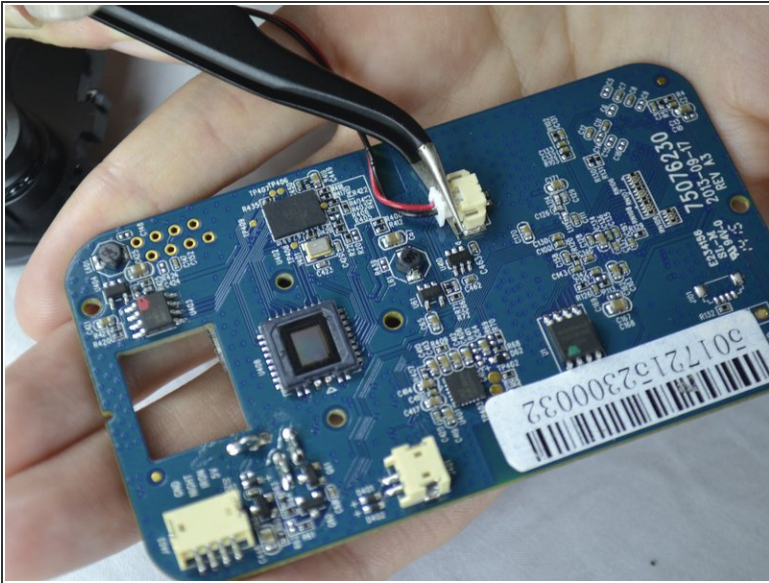
## Step 11



- Slide the attached piece from the lens holder device.



## Step 12



- Use the tweezers to pull the white attachment out from the port a little.
- Then, take your fingers and gently pull the white attachment out from the tan port.

To reassemble your device, follow these instructions in reverse order.