



Compaq Presario V2414NR Keyboard Replacement

This guide shows how to replace the keyboard in your Compaq laptop.

Written By: Ryan Schmidt



INTRODUCTION

Without a keyboard the computer becomes essentially unusable. In this guide, you will learn how to remove and replace the keyboard.



TOOLS:

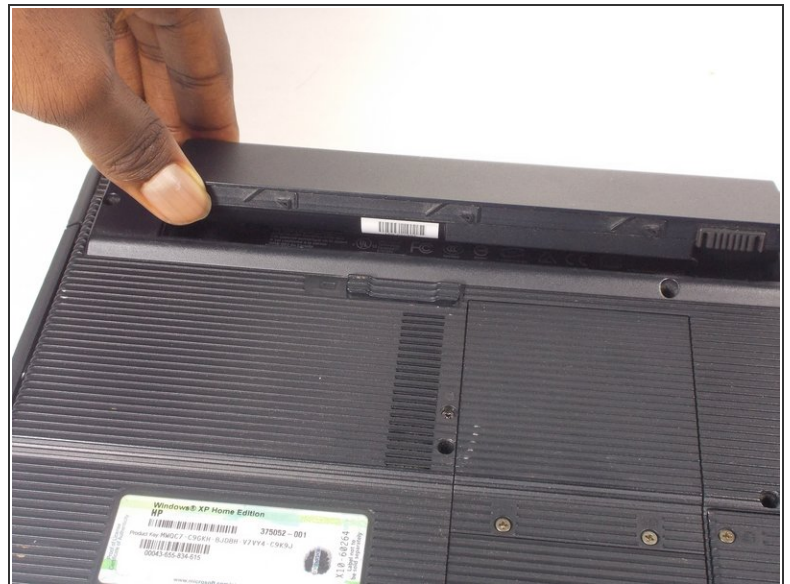
- [Phillips #1 Screwdriver](#) (1)
 - [Paper Clip](#) (1)
 - [iFixit Opening Tools](#) (1)
-

Step 1 — Battery



- Shutdown the computer.
- Remove all external devices.
- Unplug the power, and any other cords, from the laptop.
- Turn the laptop upside down, with the front towards you.

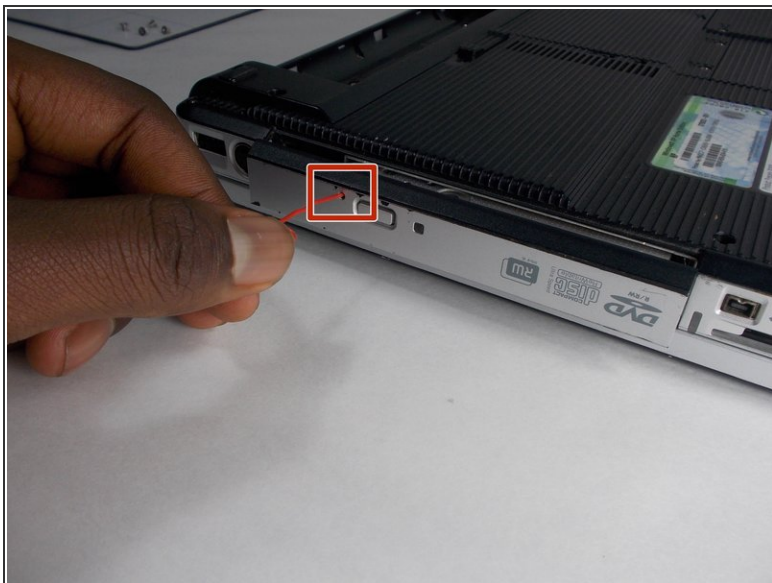
Step 2



- Slide the battery release latch to the left until the battery pops up.
 - Lift the front edge of the battery pack and swing it back to remove it.
- ☑ When reassembling, first align the back of the battery with the chassis, then press the front downwards until it latches.

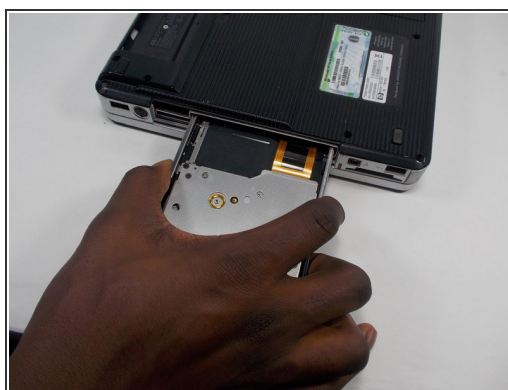
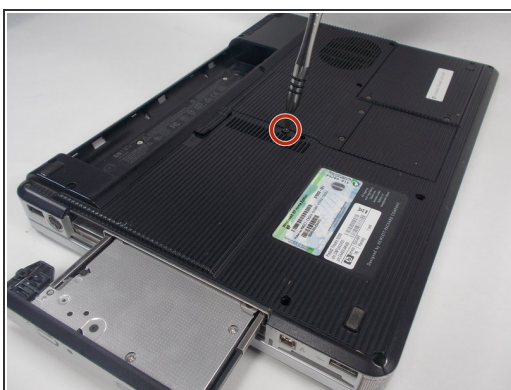
This document was generated on 2020-11-28 05:23:54 AM (MST).

Step 3 — Optical Drive



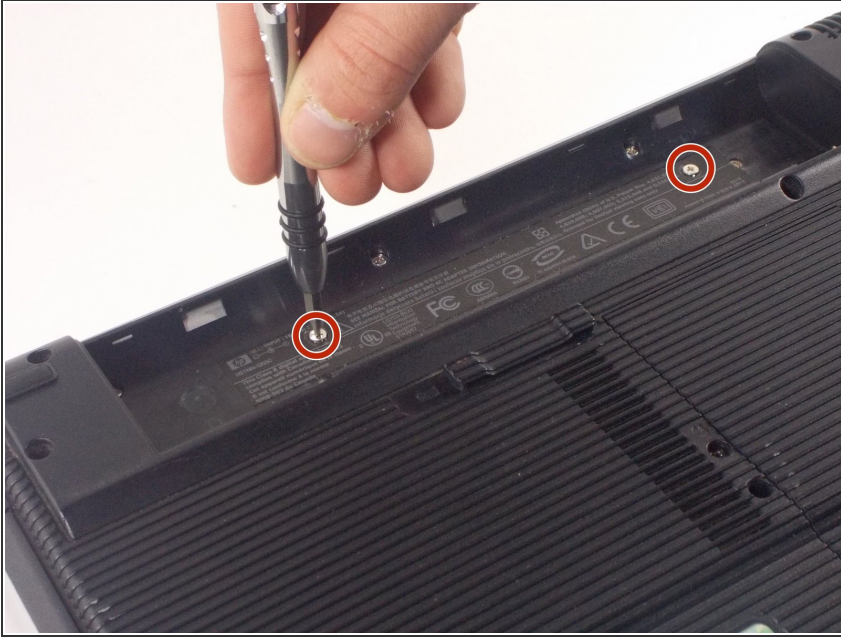
- On the optical drive there is small pin hole. Insert a paperclip or similarly sized object in the hole.
- The Drive will pop a short way out of the computer.

Step 4



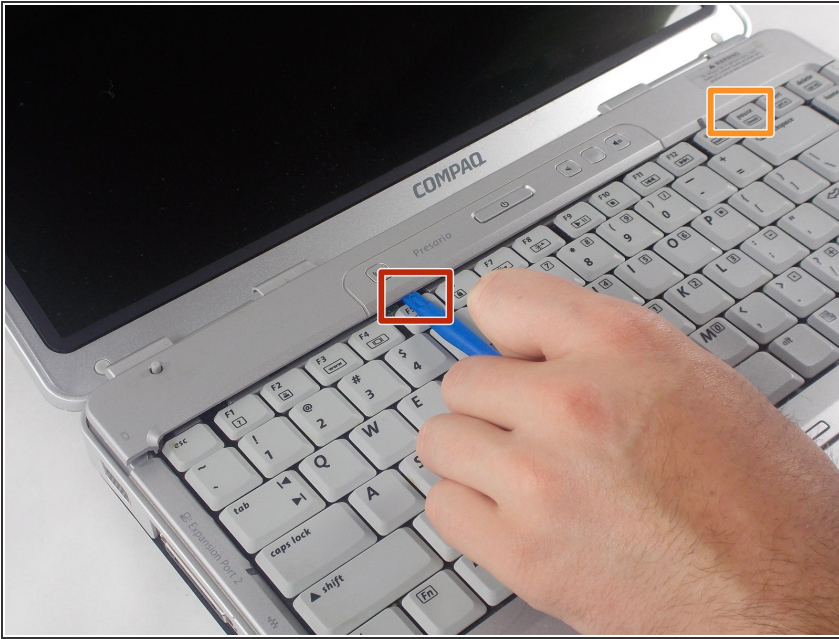
- Remove the 7mm Phillips #1 screw that secures the optical drive to the computer.
- Grip the sides of the Optical Drive and slide it out until it is completely removed from the computer.
- ☑ When reassembling, slide the optical drive straight in until it clicks.

Step 5 — Keyboard



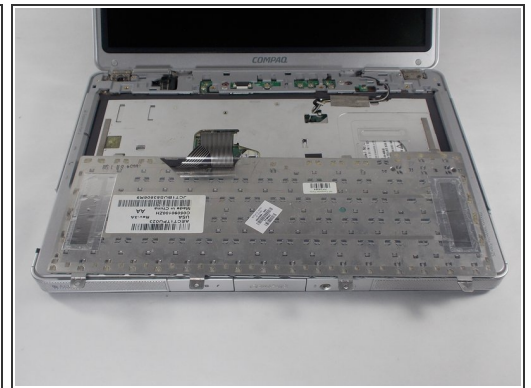
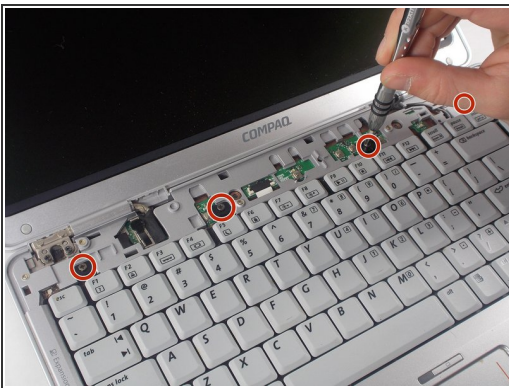
- Remove the two 4mm Philips #1 screws that secure the switch cover to the computer.
- Turn the computer display-side up with the front panel toward you.
- Open the computer display as far as possible.

Step 6



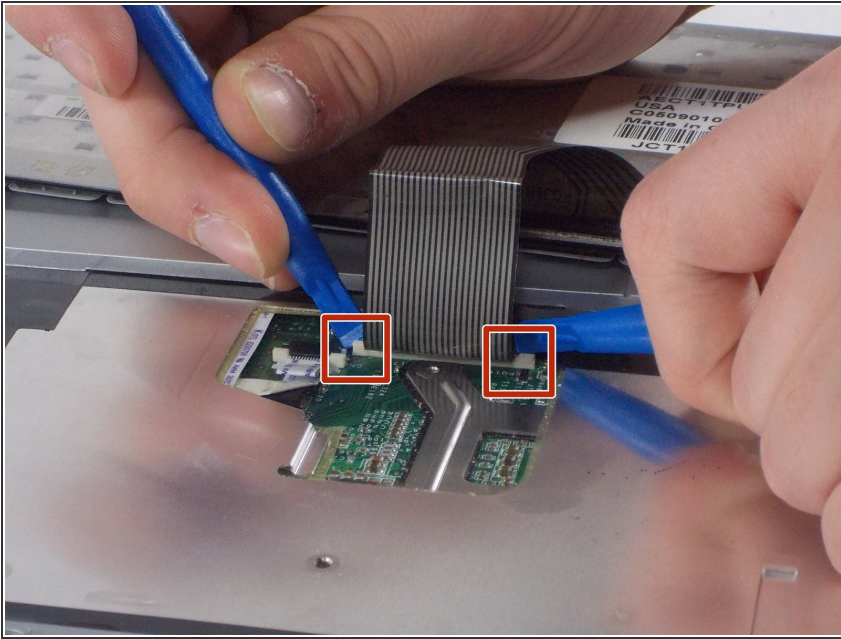
- Insert a plastic opening tool into the slots located behind the [F5] key and lift the front edge of the switch cover until it disengages from the computer.
- Insert a plastic opening tool into the slots located behind the [Insert] key and lift the front edge of the switch cover until it disengages from the computer.
- Remove the switch cover.

Step 7



- Remove the four 3mm Phillips #1 screws that secure the keyboard to the computer.
- Swing the rear edge of the keyboard up and forward until it rests on the palm rest.

Step 8



- Use your fingernails or two plastic opening tools to push the white portion of the ZIF connector towards the hinge of the computer.
- Remove the ribbon cable from the ZIF connector.
- Remove the keyboard.

To reassemble your device, follow these instructions in reverse order.