



Compaq Presario V2414NR WiFi Card Replacement

This guide shows how to remove the WiFi Mini PCI Card from you Compaq laptop.

Written By: Ryan Schmidt



INTRODUCTION

The WiFi card allows you to connect to wireless networks. Many issues are caused by incorrectly configured software or drivers. If you've already exhausted your software troubleshooting options, follow this guide to replace the WiFi card.

TOOLS:

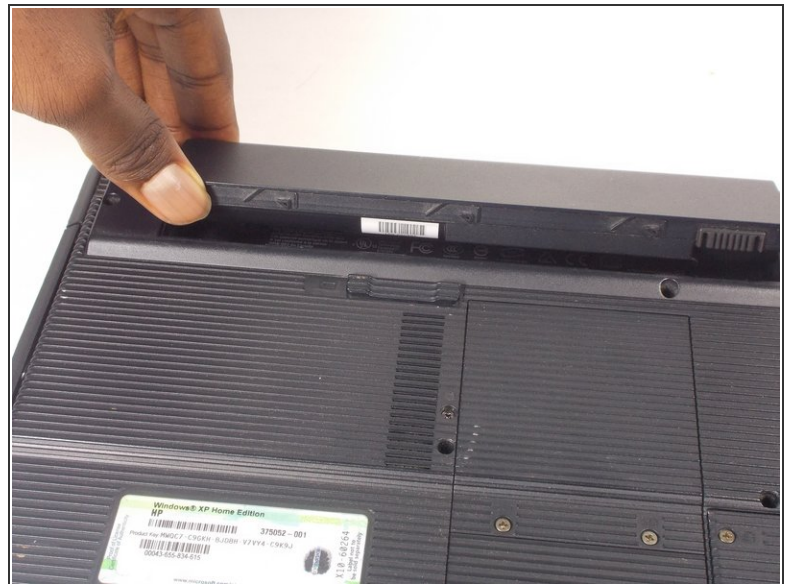
- [Phillips #1 Screwdriver](#) (1)
 - [iFixit Opening Tools](#) (1)
-

Step 1 — Battery



- Shutdown the computer.
- Remove all external devices.
- Unplug the power, and any other cords, from the laptop.
- Turn the laptop upside down, with the front towards you.

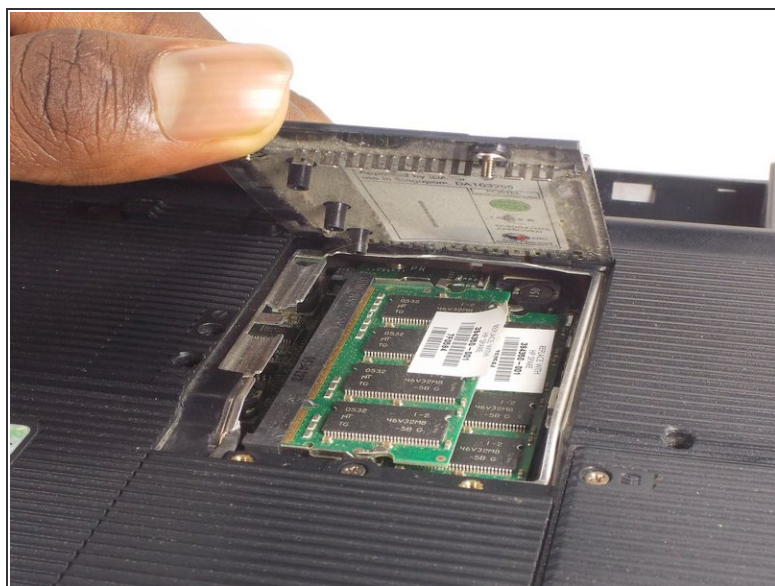
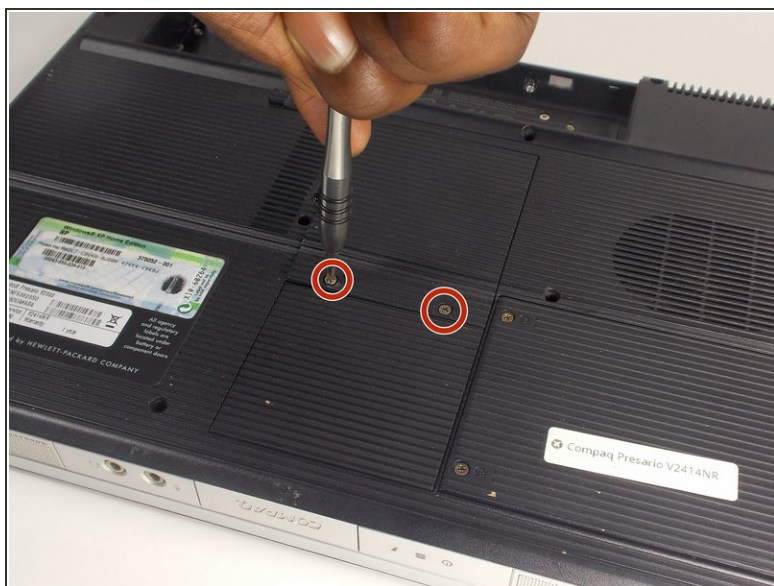
Step 2



- Slide the battery release latch to the left until the battery pops up.
 - Lift the front edge of the battery pack and swing it back to remove it.
- ☑ When reassembling, first align the back of the battery with the chassis, then press the front downwards until it latches.

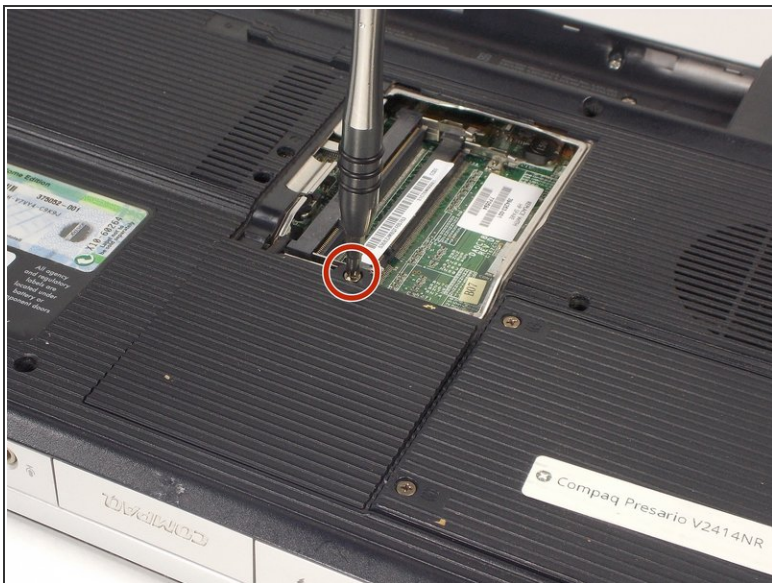
This document was generated on 2020-11-14 07:11:33 PM (MST).

Step 3 — RAM Cover



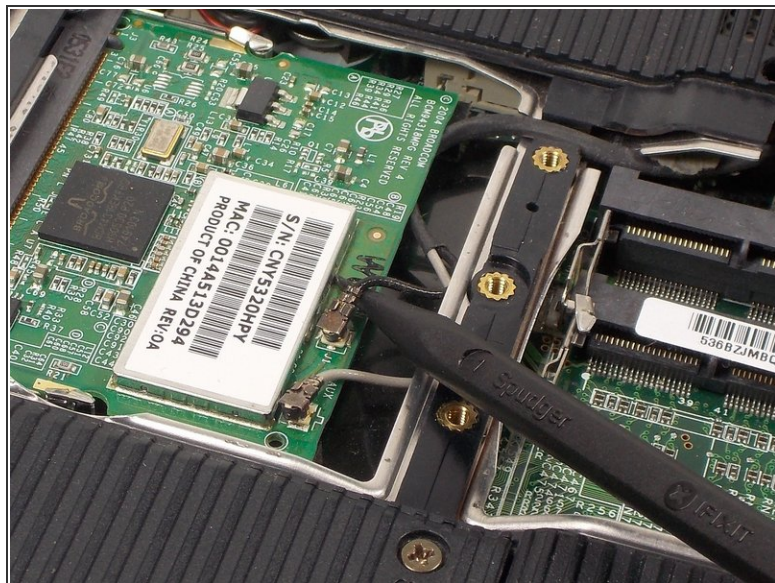
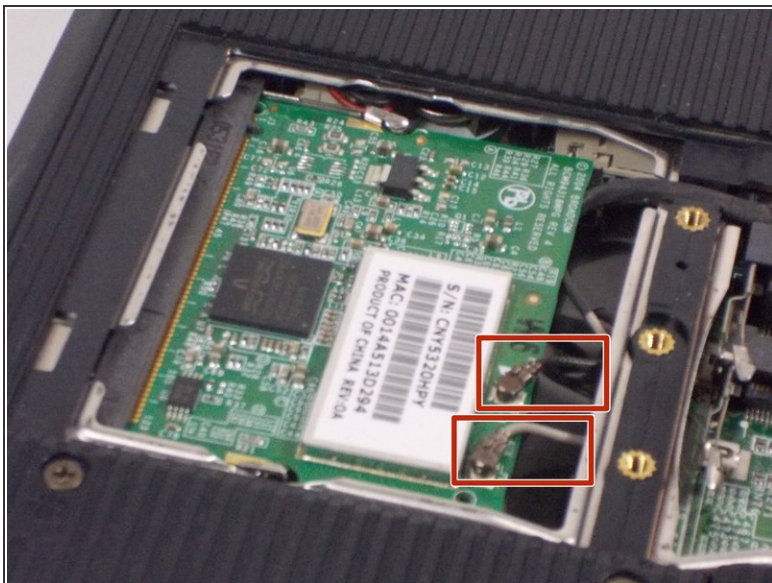
- Loosen the two 5mm Phillips #1 screws that secure the memory module compartment cover to the computer.
 - ⓘ These screws are captured to the cover panel.
- Lift the front edge of the memory module compartment cover and swing it back to remove it.

Step 4 — WiFi Card



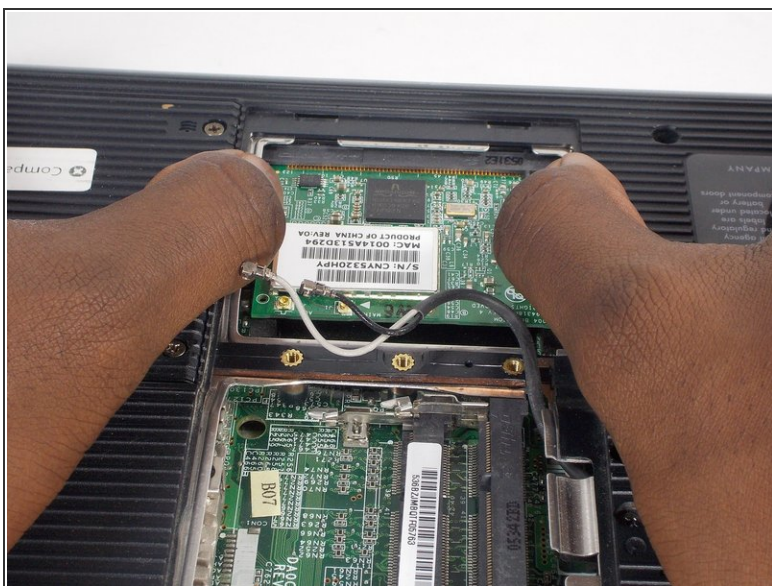
- Loosen the 5mm Phillips #1 screw that secures the Mini PCI compartment cover to the computer.
 - ⓘ This screw is captured to the cover panel.
- Lift the rear edge of the Mini PCI compartment cover, and swing it forward to remove it.

Step 5



- Make note of which cable is attached to which clip on the WiFi card before disconnecting the cables.
- Disconnect the wireless antenna cables from the WiFi card by prying gently upwards on the metal part of the connector with a spudger or plastic opening tool.

Step 6



- Use your fingernails, or plastic opening tools, to spread the metal retaining tabs on each side of the WiFi card outwards until the card pops up.
- Pull the WiFi card out of the socket at the same angle it is now oriented.
- ☑ When reassembling, align the offset notch on the WiFi card contacts with the tab on the socket and insert at a 30 degree angle.

To reassemble your device, follow these instructions in reverse order.