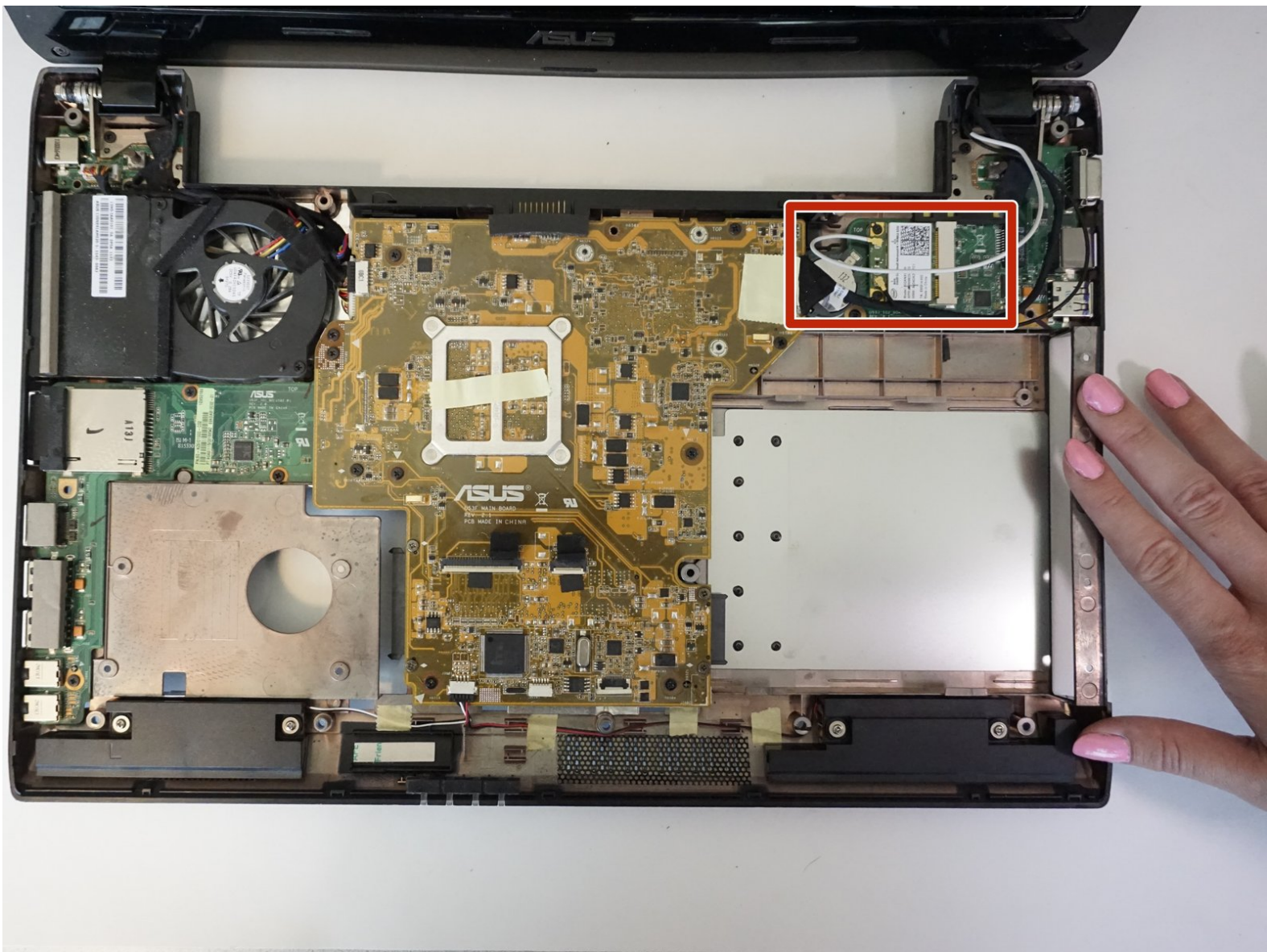




# ASUS U52F-BBG6 Wi-Fi Chip Replacement

This is a guide to show you how to replace your Wi-Fi Chip. I would allow yourself at least thirty minutes to complete this guide.

Written By: Ashley DeHuff



---

## INTRODUCTION

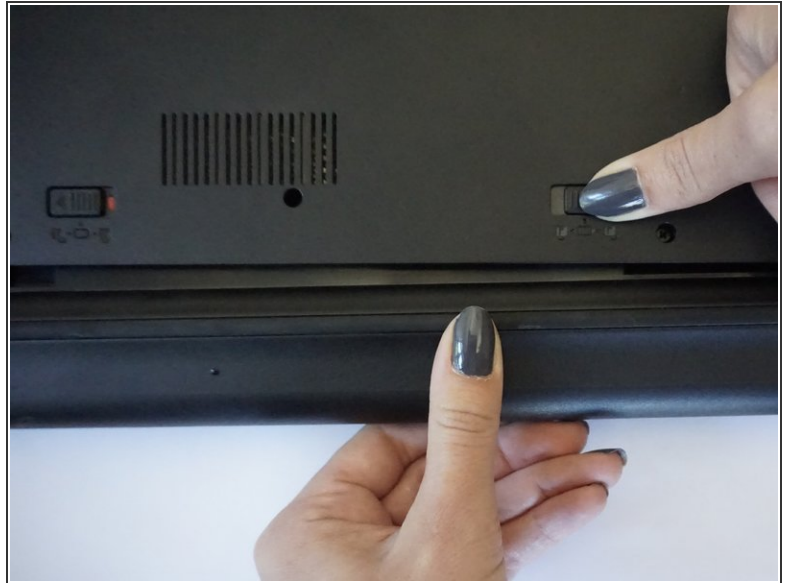
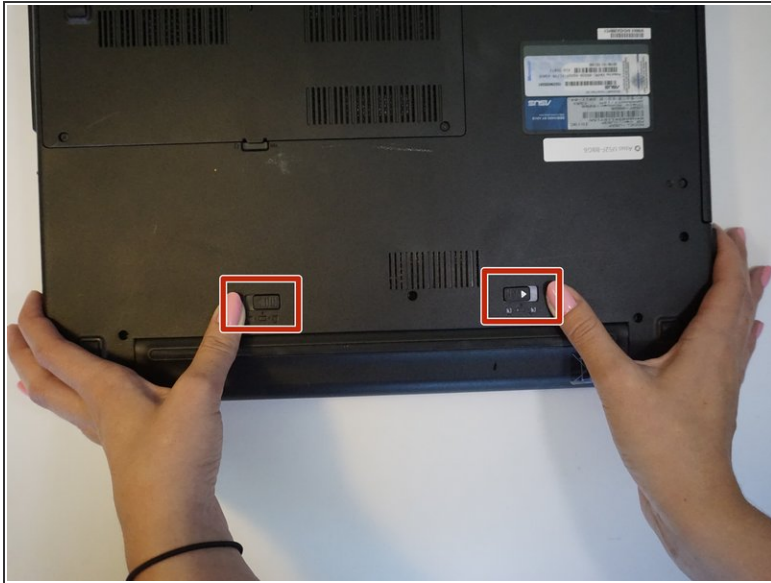
Use this guide to replace your Wi-Fi chip. Keep in mind it will take a lot of effort when removing the back panel.



### TOOLS:

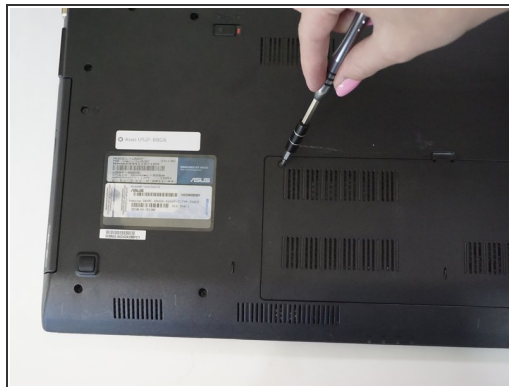
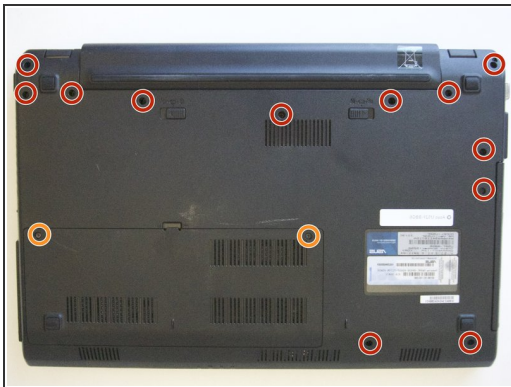
- [JIS #1](#) (1)
  - [Phillips #0 Screwdriver](#) (1)
  - [Metal Spudger](#) (1)
-

## Step 1 — Back Cover



- Flip the laptop over to the back.
- Slide the right latch to unlock, then simultaneously slide the left latch outward while pulling the battery out.

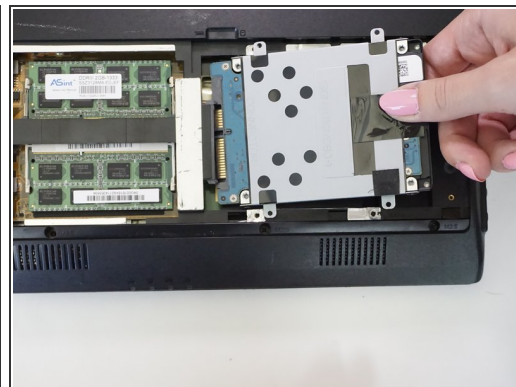
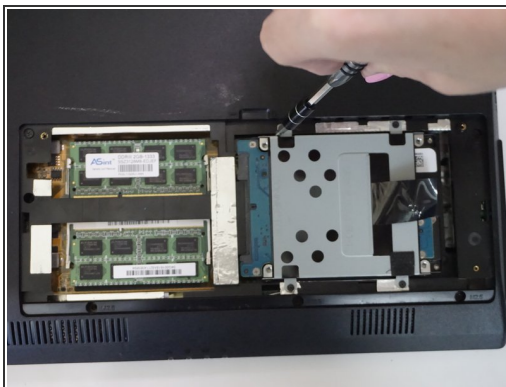
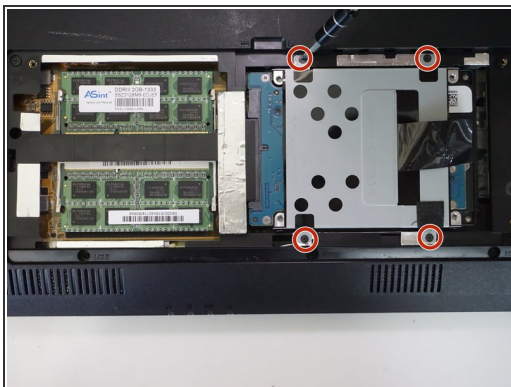
## Step 2



- Unscrew all twelve 3mm Phillips screws with the J1 screwdriver.
- Unscrew two 3mm Phillips screws on the black panel using the PH0 screwdriver.
- Lift the black panel upward by inserting your fingernail in the space provided.

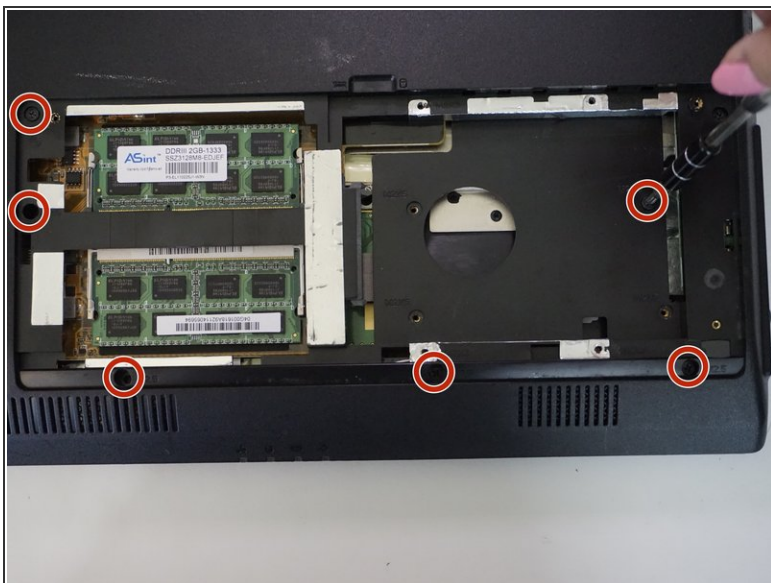


## Step 3



- In the RAM and hard drive compartment, unscrew the four 3mm Phillips screws using the J1 screwdriver.
- Gently pull out the hard drive.

## Step 4



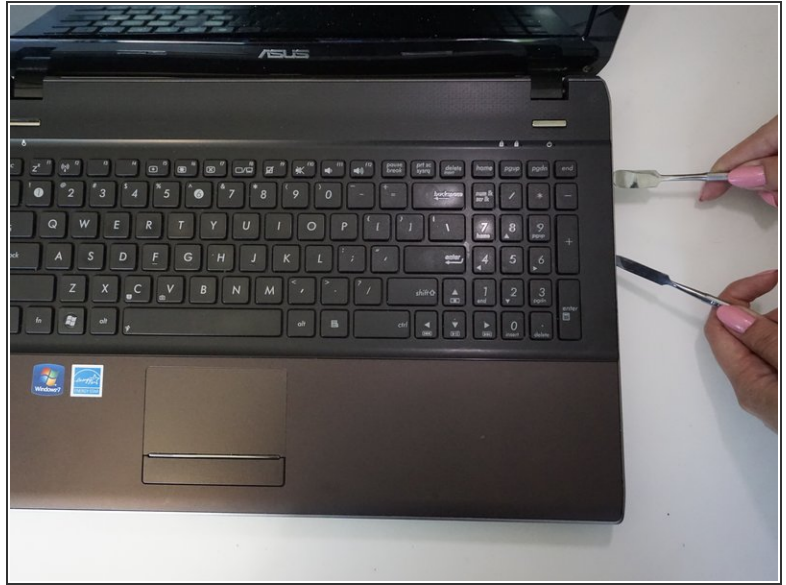
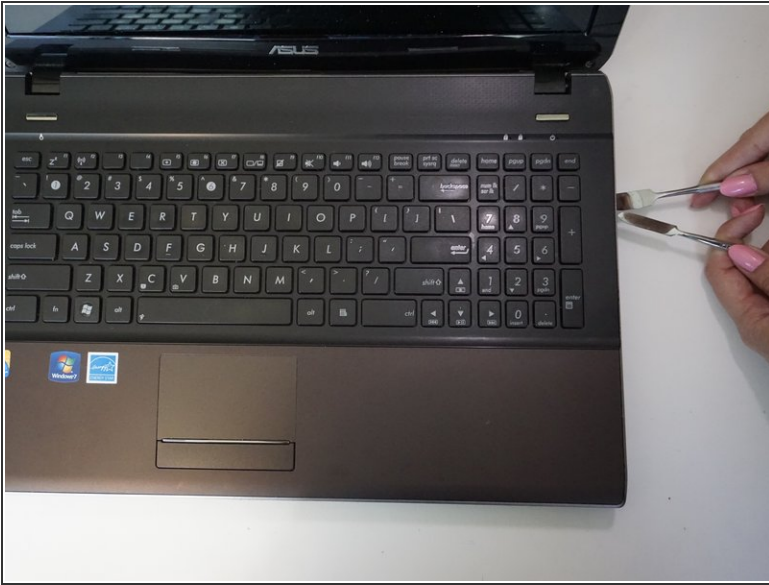
- Unscrew six 3mm Phillips screws in the RAM and hard drive compartment with the J1 screwdriver.

## Step 5



- Pull the CD drive outward with your left hand.

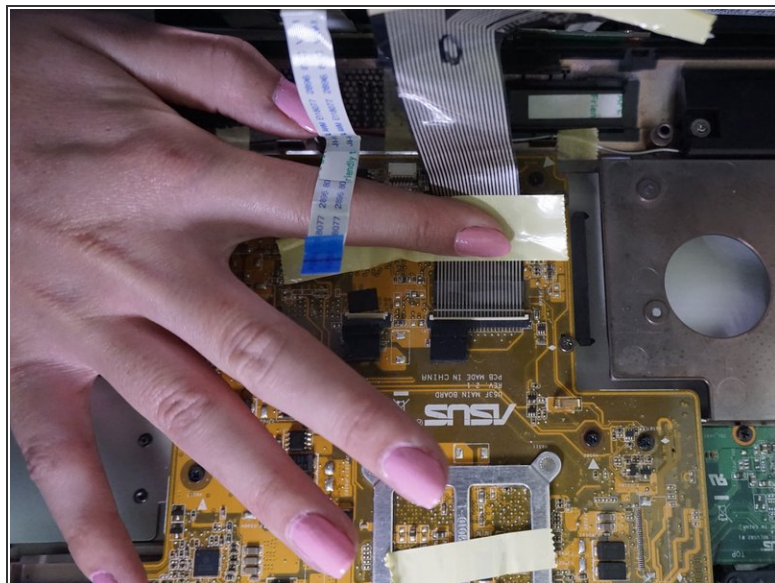
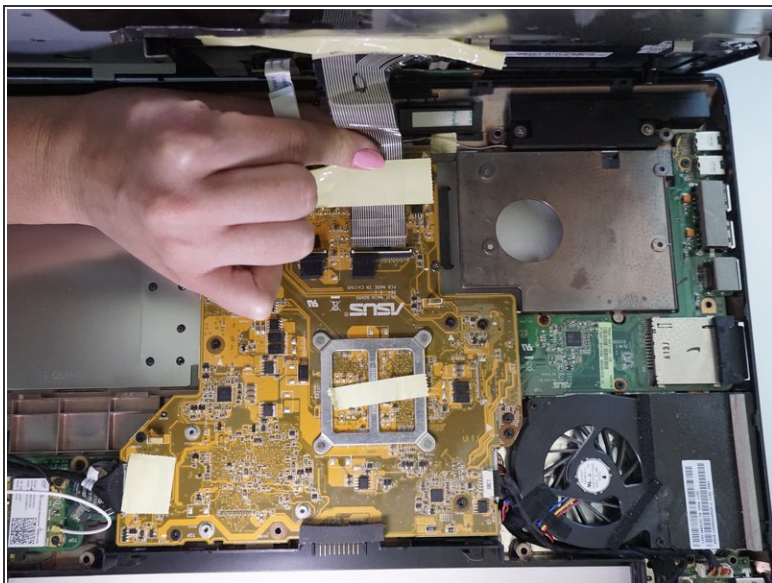
## Step 6



- Insert and gently twist the flat metal spudger between the keyboard assembly and the bottom plastic cover so that a small seam is opened.
  - Put in the metal spudger in the seam to hold its place while twisting and levering the flat metal spudger along the whole keyboard.
- ⚠ Be careful not to hit any of the internals with the metal spudger. The regular black nylon spudger should be used whenever possible, especially around batteries or sensitive internal components.
- ⓘ You will need add a lot of pressure to open the laptop. Expect to hear snaps as the clips holding the two pieces are released.
- Slowly pry off the back

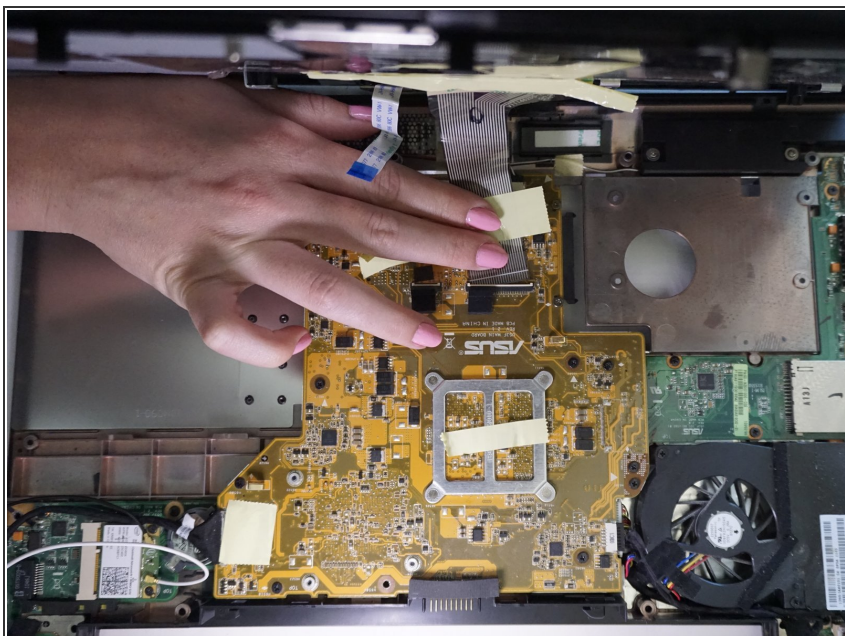


## Step 7 — Keyboard



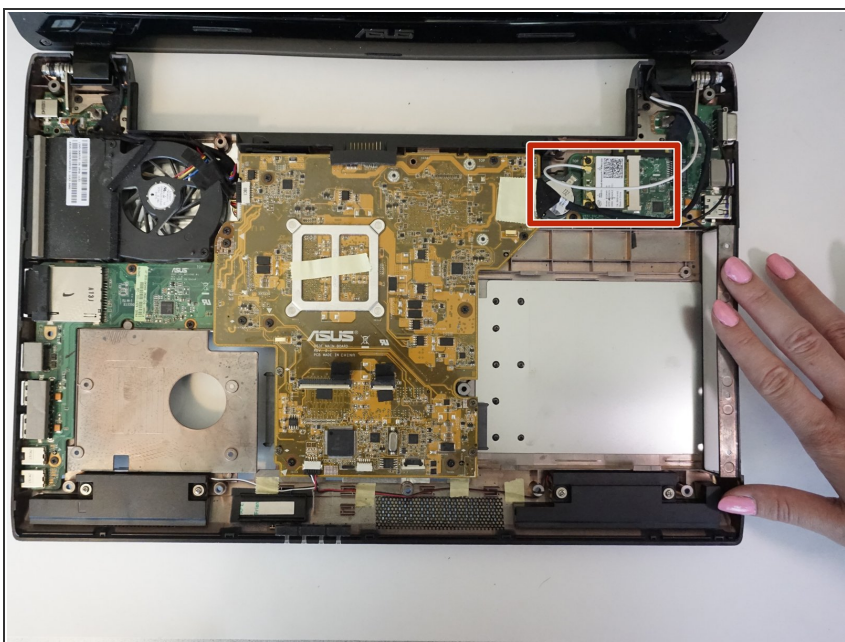
- Unlatch the clip attaching the white flattened flexible cord with a blue tip to the circuit board with your thumb.
- Pull out the white flattened cord.

## Step 8



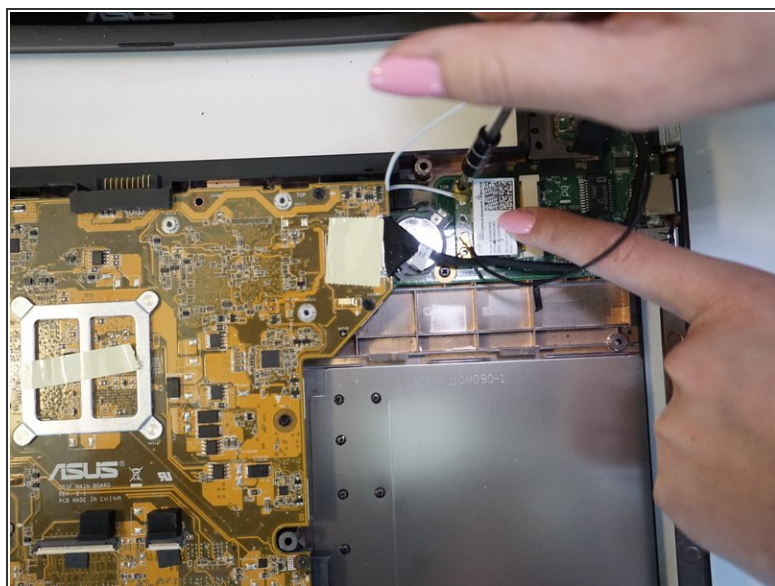
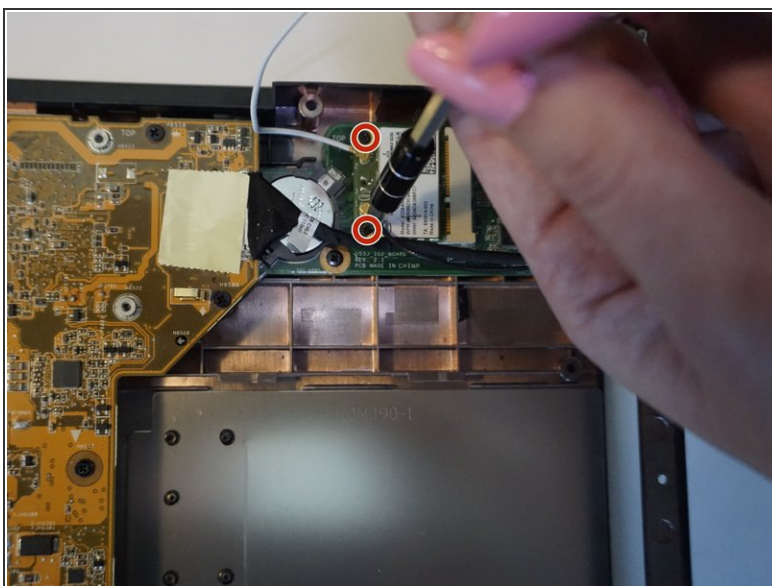
- Pull back yellow tape attaching the metal colored flexible flattened cord to the circuit board.
- Lift up the latch at the end of the cord.
- Pull out the cord to release the keyboard.

## Step 9 — Wi-fi Chip



- Find the Wi-Fi chip circuit board, which has a white sticker on it and is connected to a black and white wire.

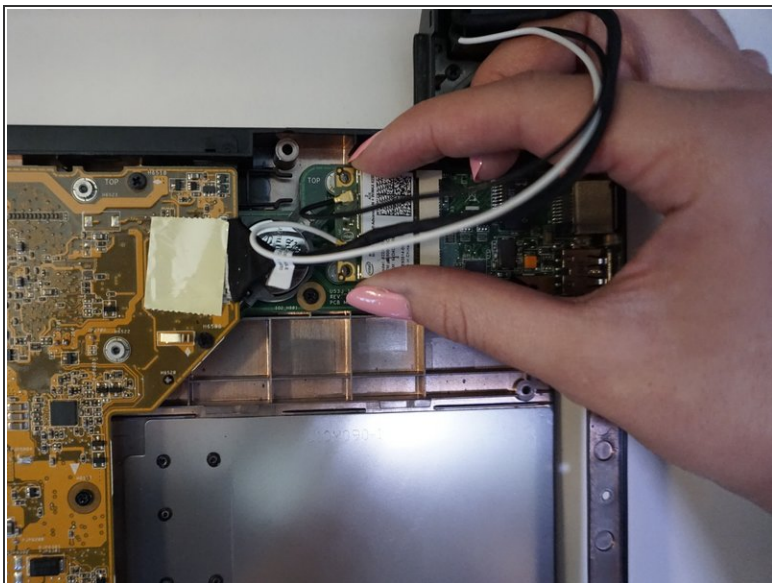
## Step 10



- Unscrew the two 3mm Phillips screws using a J1 screwdriver to release the Wi-Fi chip.

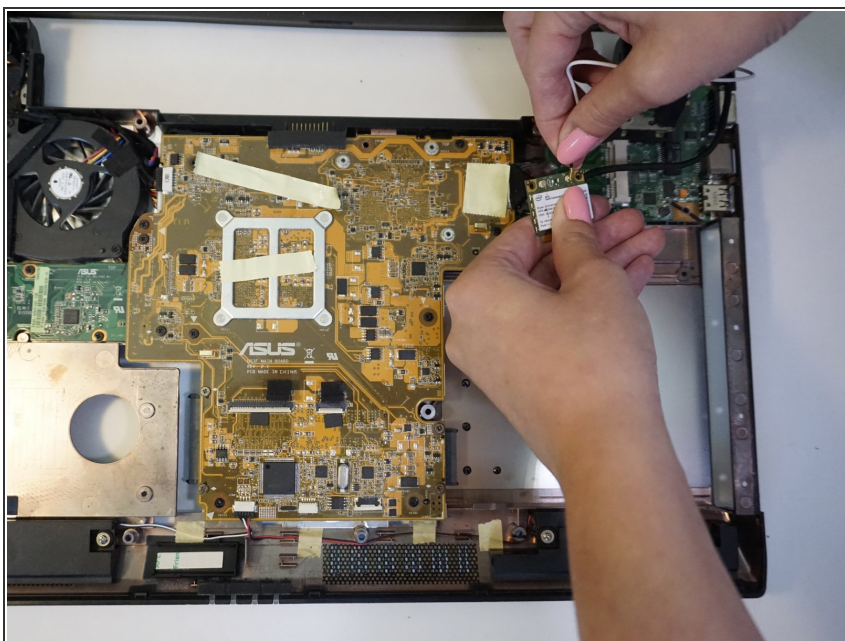


## Step 11



- Pull out the Wi-Fi chip

## Step 12



- Pull off both wires from the chip.
- ❗ It's advised to label the wires to remember where each colored wire connects to on the circuit board.

To reassemble your device, follow these instructions in reverse order.