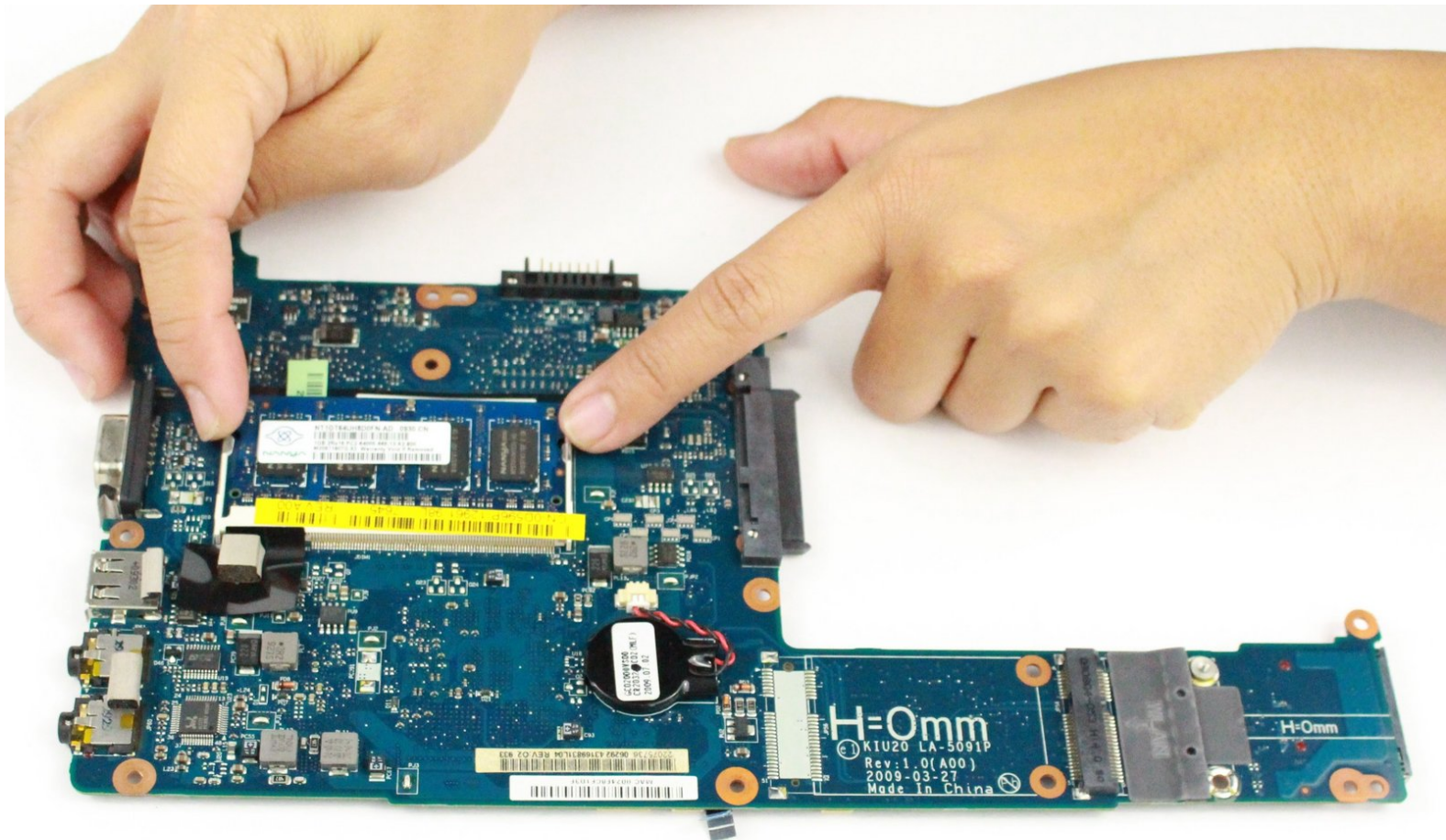




Dell Inspiron Mini 10 RAM Replacement

Upgrade or replace RAM to boost speed and performance.

Written By: Danielle Jarecki



INTRODUCTION

This guide will give step-by-step instructions on how to replace the memory card in your device.



TOOLS:

- [Tweezers](#) (1)
 - [Phillips #0 Screwdriver](#) (1)
 - [64 Bit Driver Kit](#) (1)
 - [Spudger](#) (1)
 - [iFixit Opening Tools](#) (1)
-

Step 1 — Battery



- ⚠ To prevent injury and loss of data, ensure the device is turned off.
- Slide the release latches out toward the edges to unlock the battery.

Step 2



- Remove the battery by pulling it up and out.

Step 3 — WiFi Adapter



- On the bottom of the laptop locate the removable panel and screw holding it to the body. Loosen the screw and take the cover off.

Step 4




- Remove the black and white antenna cable from the wifi adapter by pinching the gold contacts with the tips of your finger, or you can use tweezers, and pull them straight away from the adapter.
- Unscrew the single 5mm Phillips 0 screw on the top right of the adapter. The adapter should start to angle away from the body of the computer. Once the screw is off completely, pull the adapter out of the data slot.

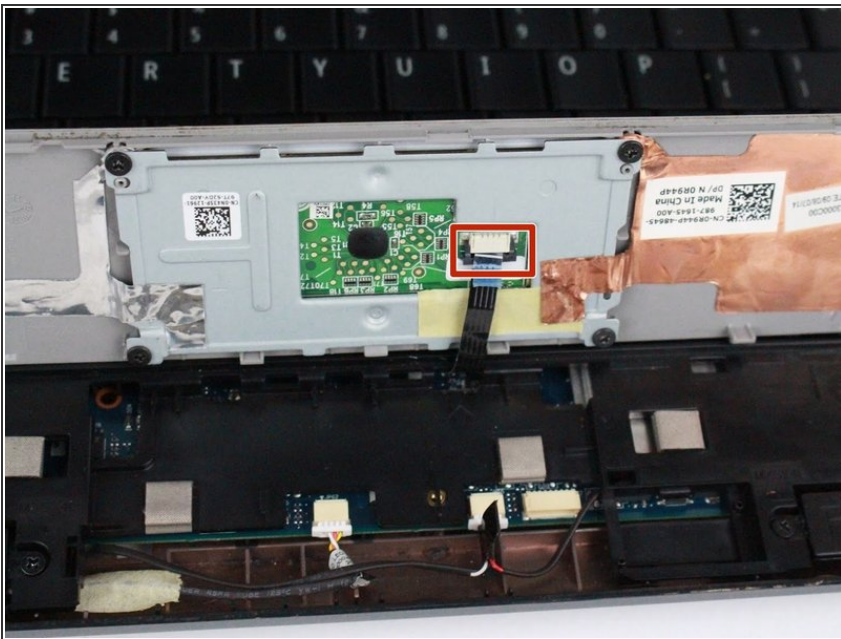
Step 5 — Palm Rest



- Using a prying tool, gently pry the palm rest off of the palm rest bracket. Start prying from one side and slowly work your way around.

 Carefully remove the palm rest from the computer base since it is still connected by a cable and to avoid damage to the palm rest.

Step 6



- Gently pull the touchpad cable off the palm rest bracket.
- Lift the rest of the palm rest off the computer base.

Step 7 — Keyboard



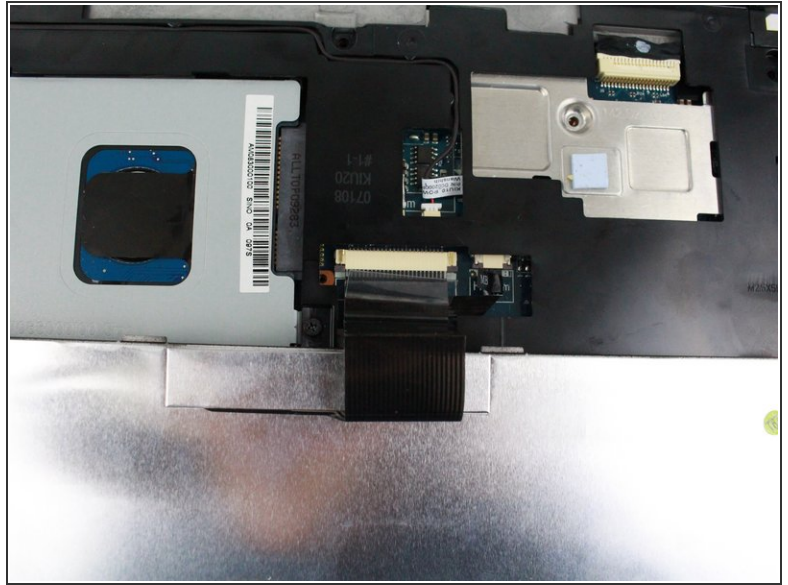
- Remove the three 8mm Philips 0 screws securing the keyboard.

Step 8



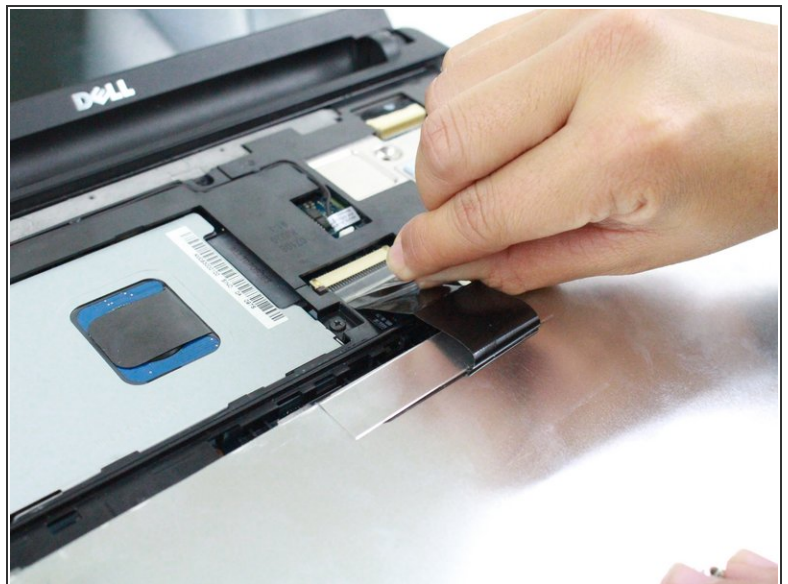
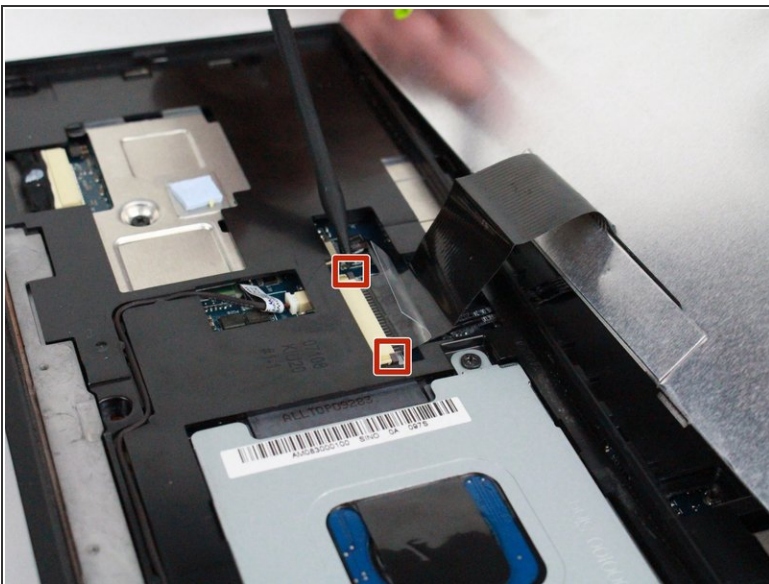
- Turn over the device and open the display.
- Gently pry open the keyboard with the plastic opening tool, working under the edges to release the clips.

Step 9



⚠ Lift the keyboard off of the support bracket carefully since it is still connected by a ribbon cable.

Step 10



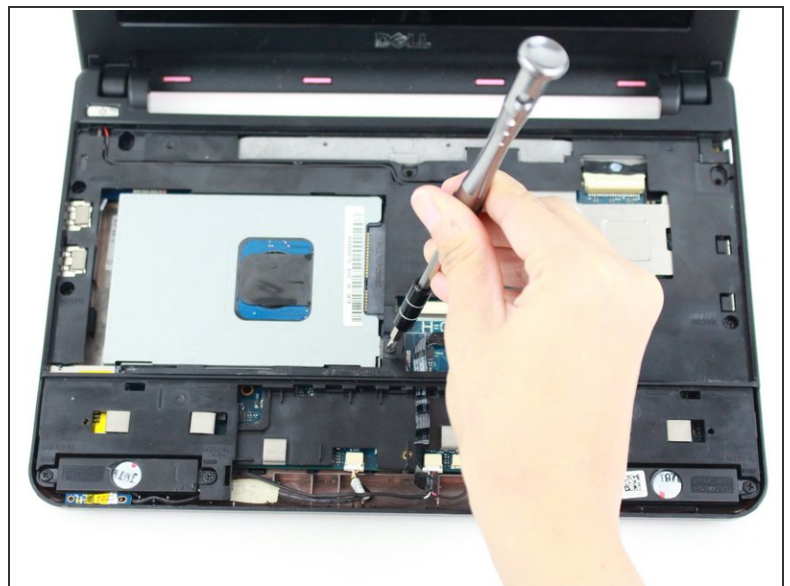
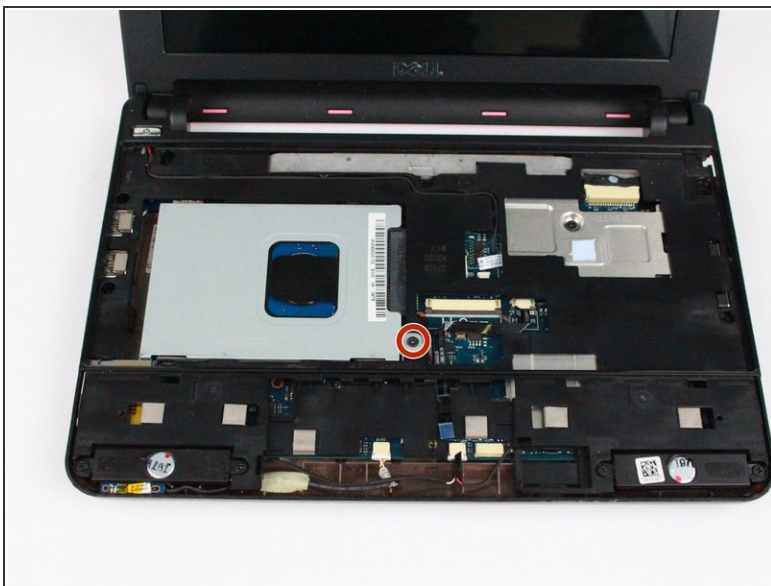
- Push the clips out on either side of the ribbon cable to release it.
- Gently disconnect the ribbon cable by pulling on the clear tab.
- Remove the keyboard.

Step 11 — Palm Rest Bracket



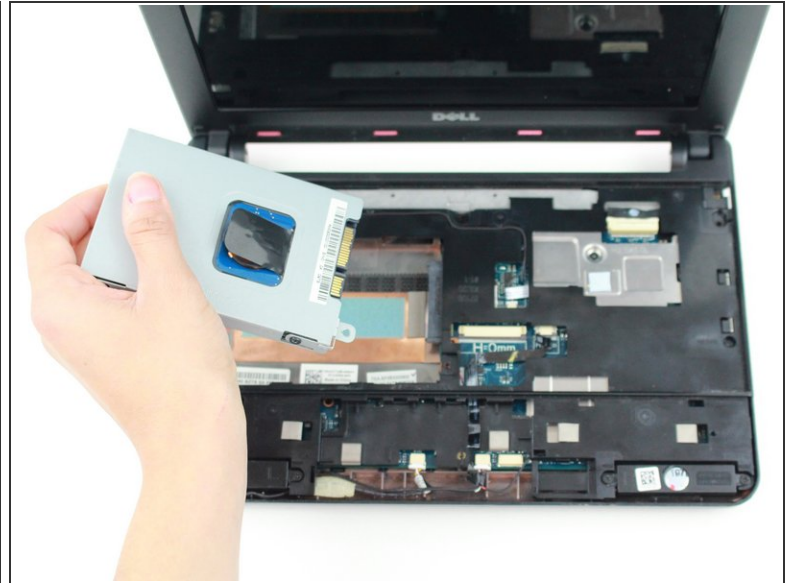
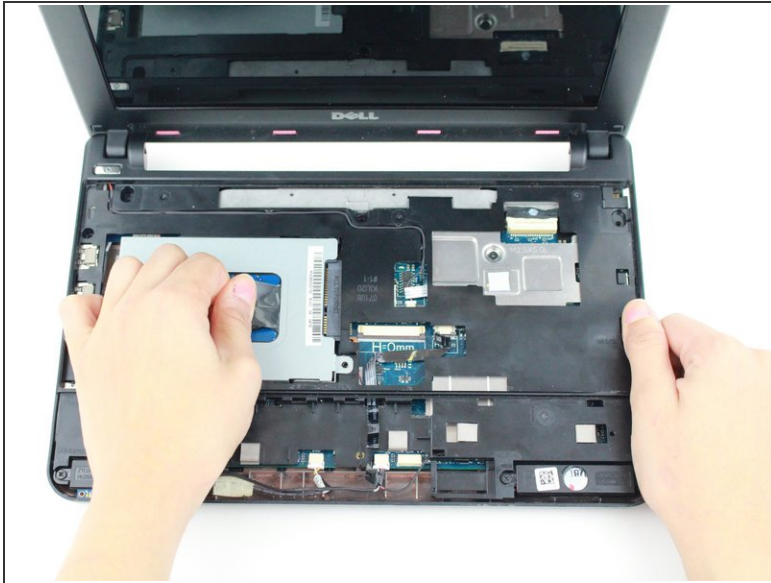
- Close the device and turn over.
- Remove the five 8mm Phillips 0 screws.

Step 12



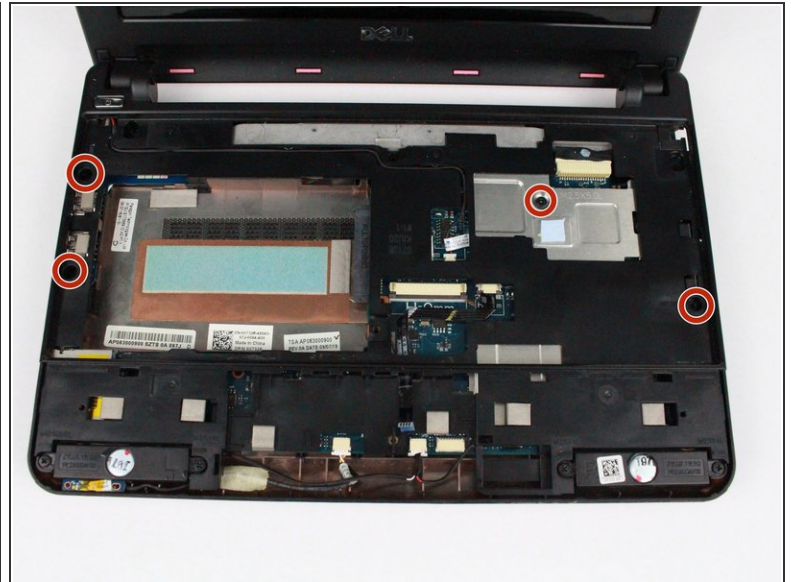
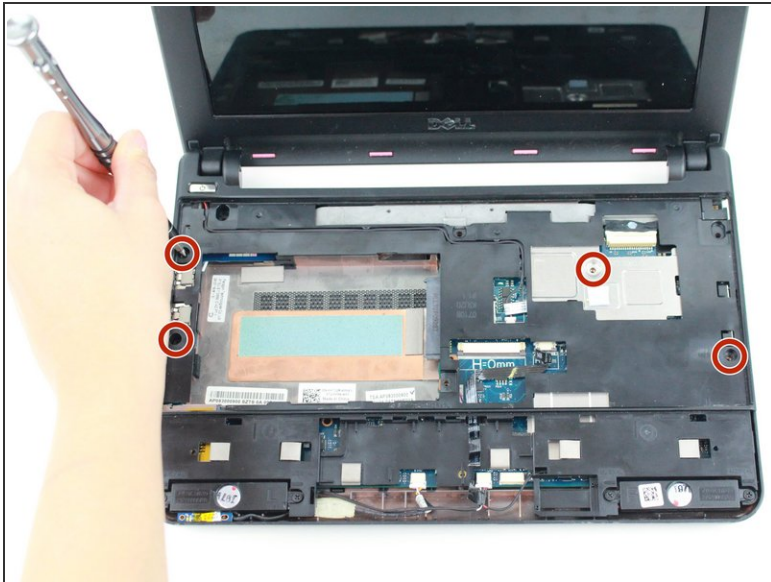
- Turn the device over and open the display.
- Remove the single 8mm Phillips 0 screw attaching the hard-drive cage to the body of the device.

Step 13



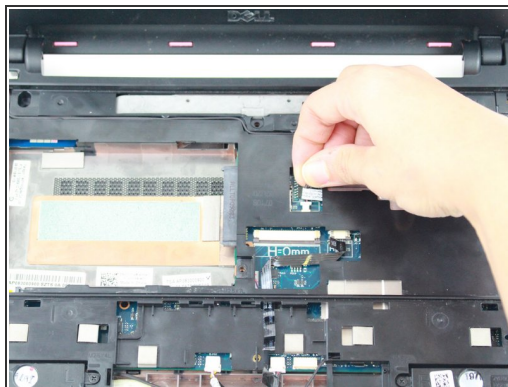
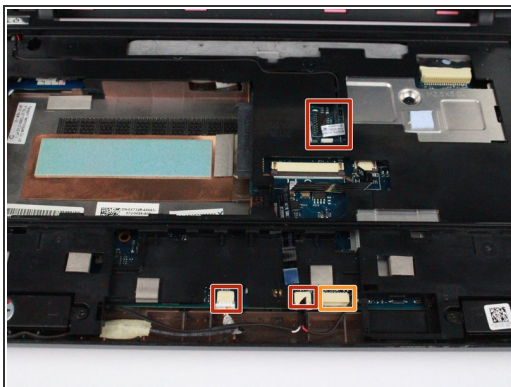
- Pull on the black tab and slide the hard-drive cage toward the USB port on the left side of the device until its comes free and carefully lift out of device.

Step 14



- Remove the four 6mm Philips 0 screws securing the bracket.

Step 15



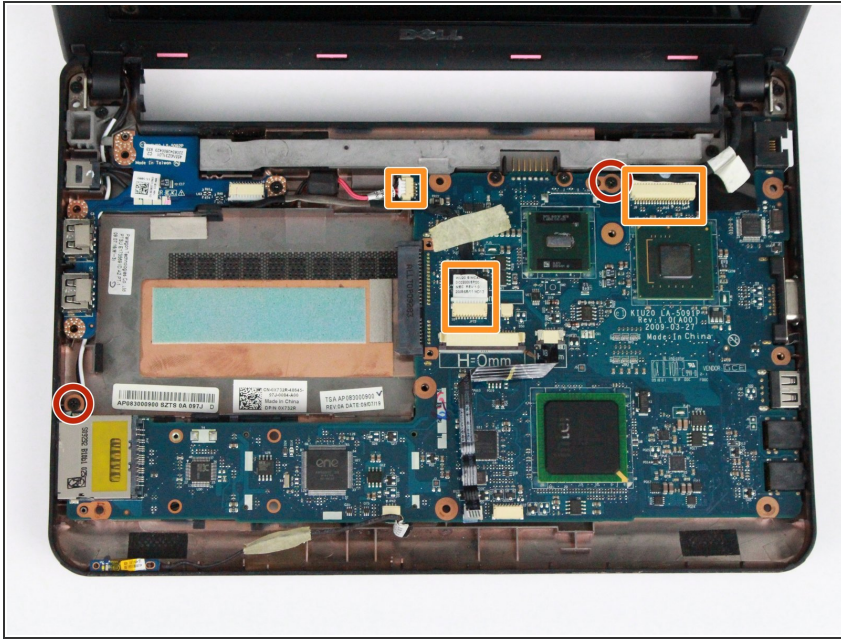
- Disconnect the following:
 - Power button cable
 - Speaker cable
 - Power status light cable
 - Bluetooth cable (if installed)

Step 16



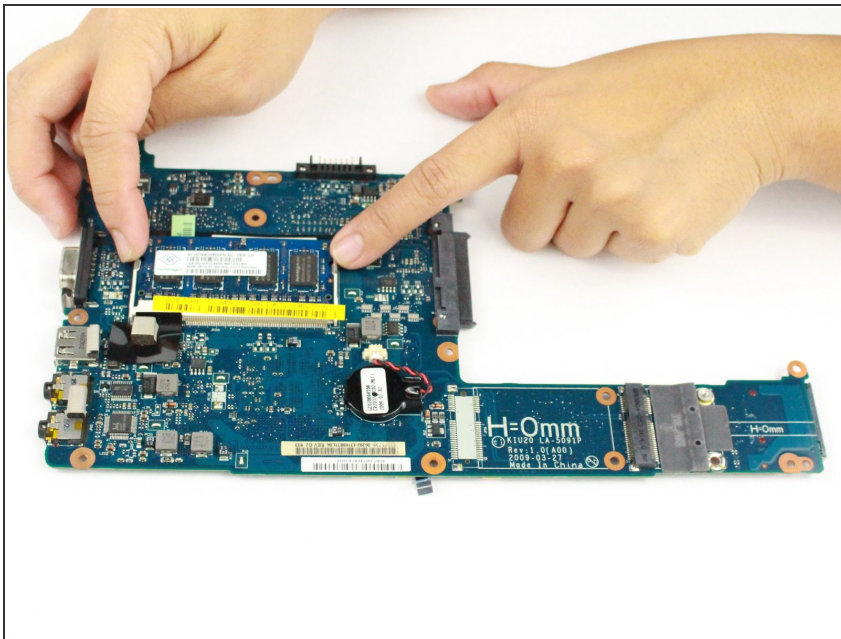
- Gently pry off the bracket using the prying tool.

Step 17 — Motherboard



- Remove the following:
 - Two 4mm Phillips screws securing the motherboard
 - AC adapter cable
 - USB and SIM card cable connector
 - Display cable connector
- Carefully lift the motherboard out.

Step 18 — RAM



- Turn the motherboard over.
- Push the clips out on either side of the memory card until it pops up.
- Remove the memory card.

To reassemble your device, follow these instructions in reverse order.