



# Toshiba Satellite L35-S2174 RAM Replacement

This guide will assist you with removing the RAM chip from a Toshiba Satellite L35-S2174 Laptop.

Written By: Evan Turick



---

## INTRODUCTION

Problems with your RAM can keep the computer from starting properly. Replacing your laptop's RAM can help with memory problems, or improve speed and functionality.

---



### TOOLS:

- [JIS Driver Set](#) (1)
-

## Step 1 — Battery



- ⚠ Turn the laptop off to prevent the possibility of electric shock or damage to the computer.
- Flip the laptop so that the bottom is facing upwards.

## Step 2



- Slide the battery lock switch to the left.

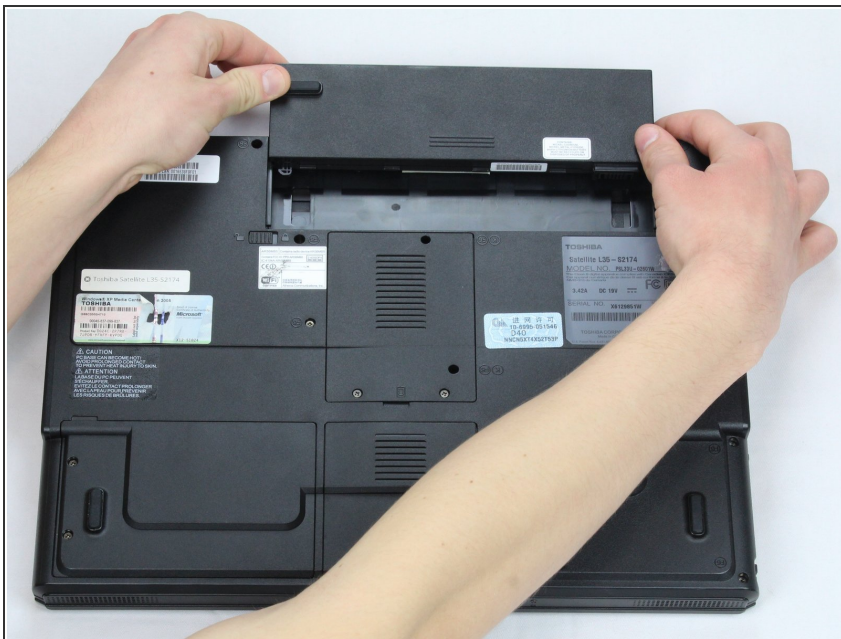


## Step 3



- Pull the sliding switch to the right and continue to hold it in this position.

## Step 4



- While holding the switch, slide the battery away from you.
- ★ You do not need to hold the switch when putting the battery back into the laptop.

## Step 5 — RAM



- Unscrew the two circled screws with a J1 screwdriver. The screws will remain attached to the panel.
- Lift the panel and remove it from the laptop.

## Step 6



- Pull the flaps apart on either side of the RAM chip. It will pop upwards.
- Carefully lift the RAM chip out of the computer.

To reassemble your device, follow these instructions in reverse order.