



DualShock 3 Teardown

This is a simple teardown on how to teardown your Dualshock PS3 controller and put it back together.

Written By: Diego Figueroa





TOOLS:

- [Essential Electronics Toolkit \(1\)](#)
-

Step 1 — DualShock 3 Teardown



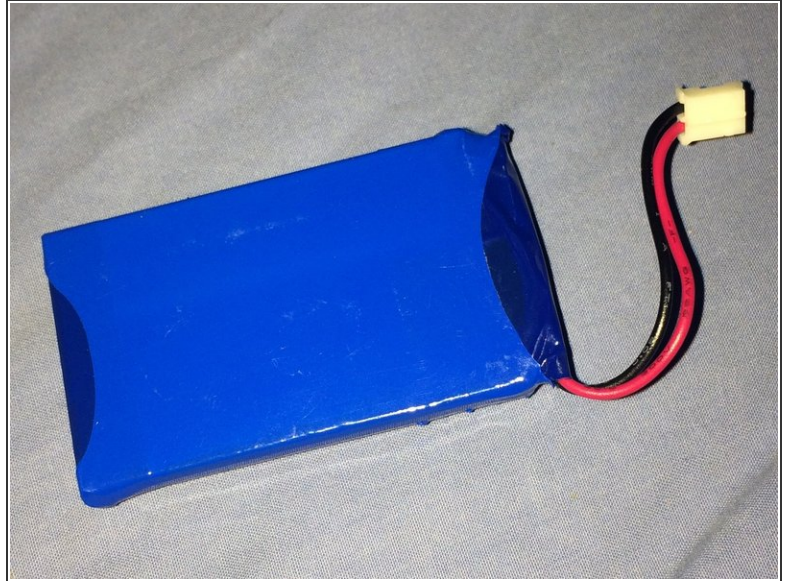
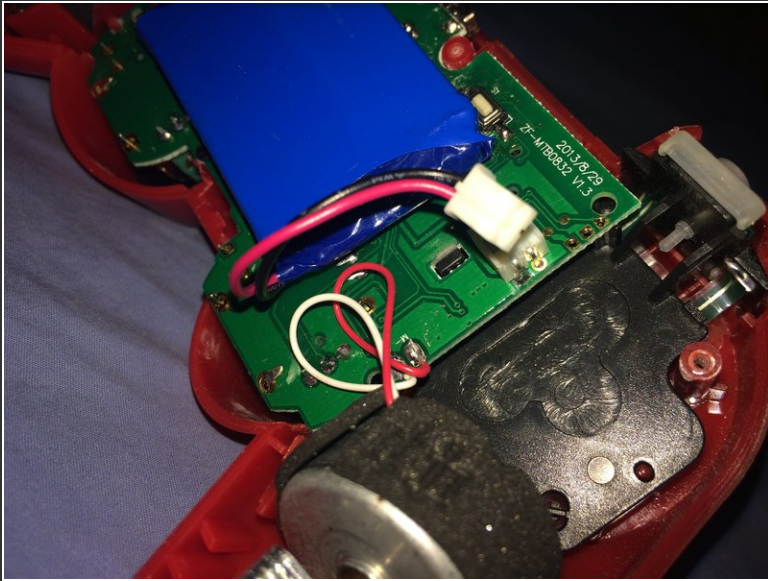
- First step you would have to do would be to unscrew five screws from the back of the controller.

Step 2



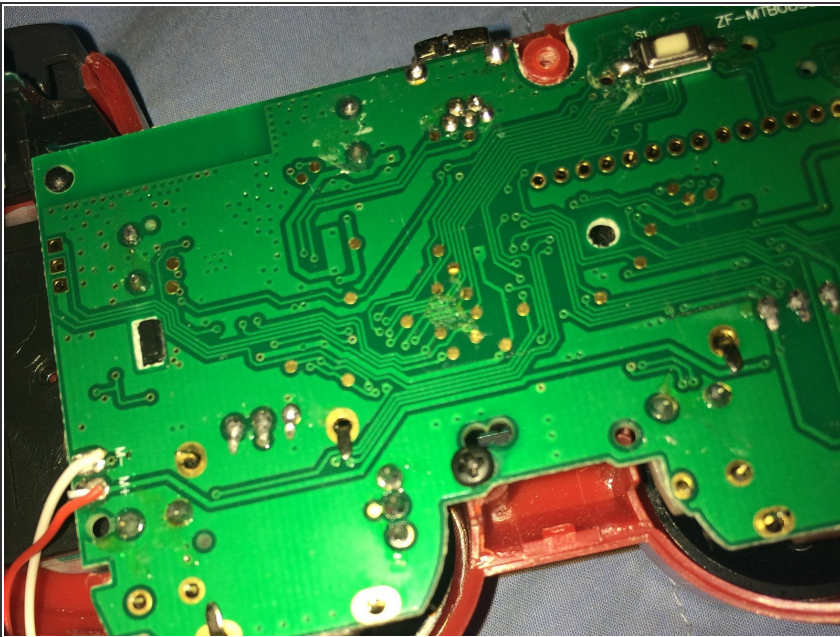
- After you unscrewed all five screws in the back, next you're going to have to gently pull both of the controller sides apart and it will come straight off.

Step 3



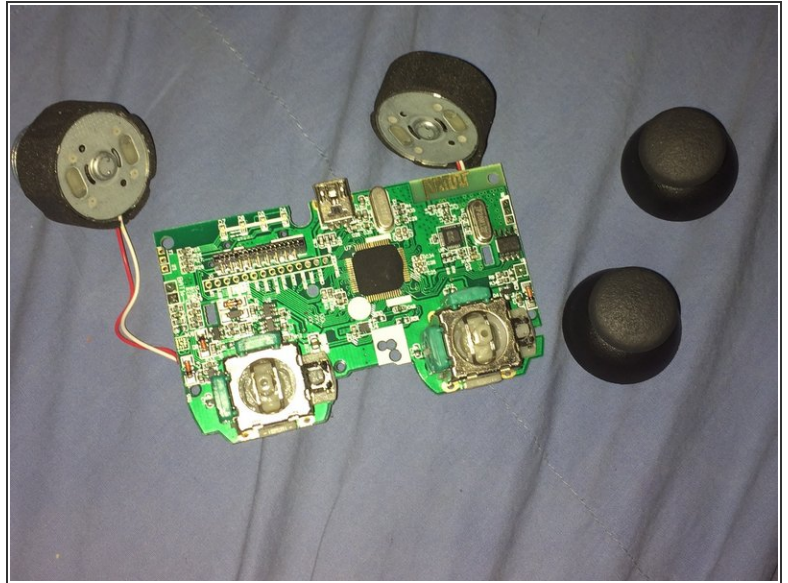
- Then you have to take off the battery and you have to be very careful, if you break the battery your controller wont work.

Step 4



- There are two screws and you are going to unscrew one from above and the bottom.

Step 5



- Then you are going to take off these analog sticks.
- (You can put the analog sticks back on)

Step 6



- Then you will be able to lift right off the other stuff that will be left.

Step 7



- and now you have all your parts of your DualShock 3 PS3 controller all scattered, to put it back together you would just have to follow the steps backwards.