



Verizon Ellipsis 7 Speaker Replacement

Replace the front facing speakers in the Verizon Ellipsis 7.

Written By: Charles Gorbett



INTRODUCTION

This guide will show you how to replace the front facing speakers on the Verizon Ellipsis 7. This is important to continue to use the Verizon Ellipsis 7 without using headphones. One of the hazards of this process is the potential to break or lose components of your device if not done properly.



TOOLS:

- [Tweezers](#) (1)
- [iFixit Opening Tools](#) (1)
- [Phillips #00 Screwdriver](#) (1)



PARTS:

- [Verizon Ellipsis 7 Replacement Speakers](#) (1)

Step 1 — Charging Port



- Hold down the power button until the screen goes black to turn off the device.
- Remove the SIM card from the device to prevent damage.
 - To remove the SIM card, open the SIM card cover on the side of the device.
 - Push SIM card in and pull it out after hearing a click.

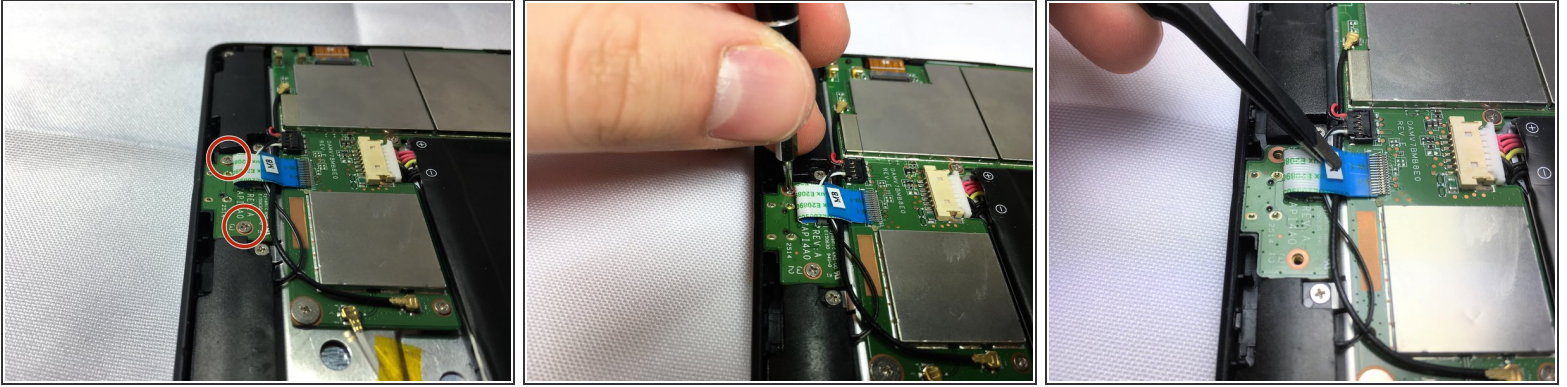
Step 2



- Take off the back panel.
- Pry open the back cover carefully with a plastic opening tool.
- Use the opening tool to disconnect the cover completely. Do not attempt to pry the back cover off with your hands.

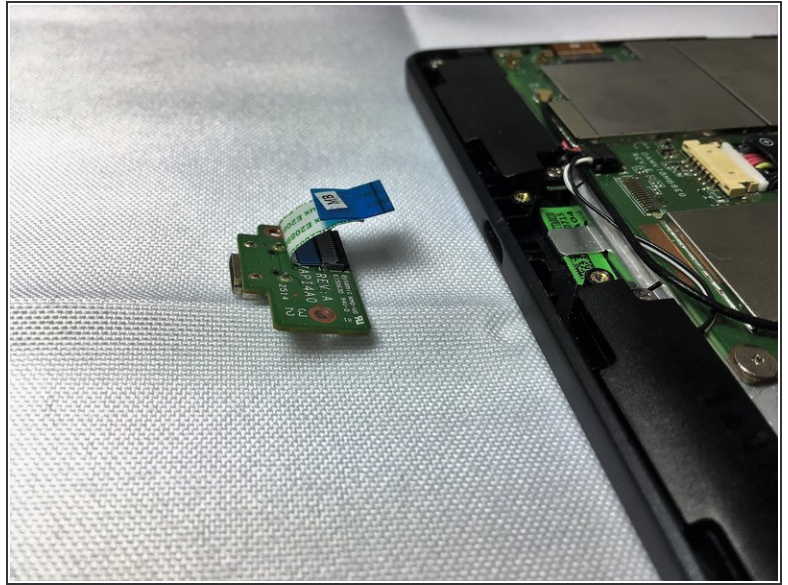
⚠ Be sure to pry open all sides of the device. Attempting to take off the back cover when part of it is attached may snap the cover.

Step 3



- Remove the charging (micro-USB) port.
 - Unscrew the indicated screws using the Phillips #00 screwdriver.
 - ⓘ The screws shown in the picture are the more common 4.76 mm.
 - Disconnect the ribbon cable connecting the charging port board to the motherboard using tweezers.
 - Use the tweezers to grab the sides of black, plastic connector. Do not grab from the wires or try to wedge it out from the bottom.
- ⚠ Be extremely careful when disconnecting the ribbon cable. It is very delicate.

Step 4



- Remove the charging port board from the phone using tweezers.
 - Place the replacement charging port into the phone.
- ⚠ Be cautious when replacing the ribbon cable onto the new charging port board.

Step 5 — Speaker



- Remove 2 screws from each speaker, 4 screws in total, using a Phillips #00 screwdriver.
- ⓘ The screws shown in the picture are the more common 4.76 mm.

Step 6



- Using tweezers carefully lift the connector up to disconnect it from the motherboard.
- Using tweezers carefully pull the speakers up and out of device.

To reassemble your device, follow these instructions in reverse order.