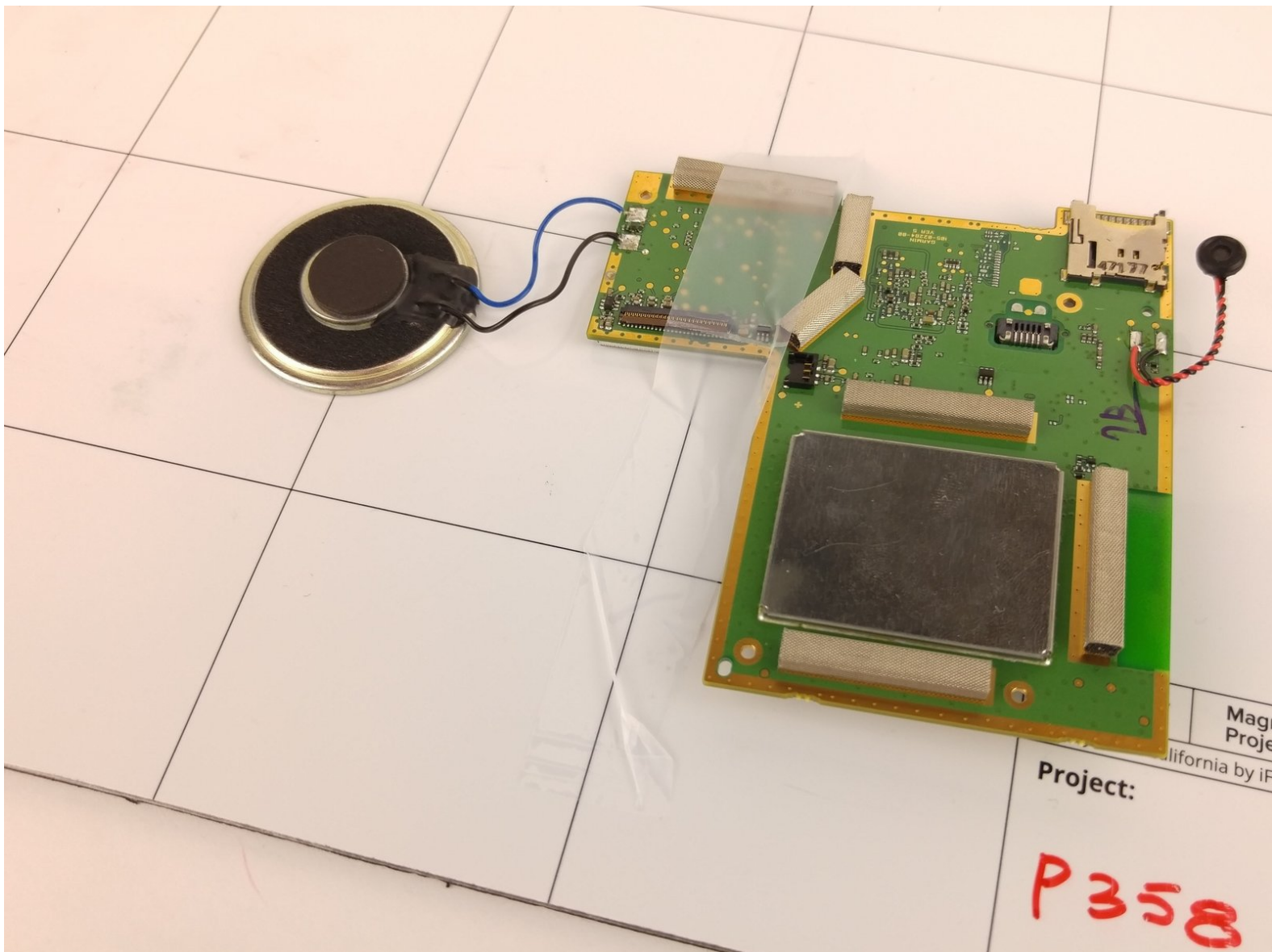




Garmin Nuvi 2689LMT Speaker Replacement

This guide demonstrates how to replace Garmin Nuvi 2689LMT speaker.

Written By: Joseph Lingvay



INTRODUCTION

This guide provides step by step instructions for removing and replacing the speaker for your Garmin Nuvi 2689LMT.

TOOLS:

- [Tweezers](#) (1)
 - [Soldering Iron](#) (1)
-

Step 1 — Main Circuit Board



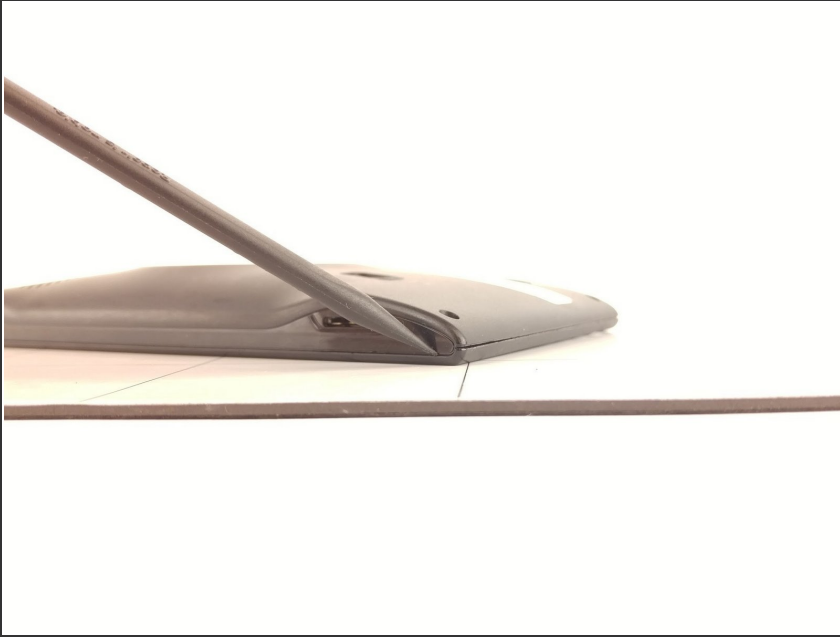
- Begin by removing the stand by depressing the tab and rocking the round interface back toward you, pulling it away from the Garmin unit.

Step 2



- Remove the four, 4mm hex screws at the four corners of the device using a T5 bit.

Step 3



- ① Place the unit screen-side down flat, with the bottom facing you. There are two seams, the one on top is artificial.
- Pry open the seam with a prying tool.

Step 4



- Firmly force a plastic spudger into the bottom seam and pry open a section. Use a prying/pushing motion to force the spudger into the unit.
- Repeat this all the way around the seam.

Step 5



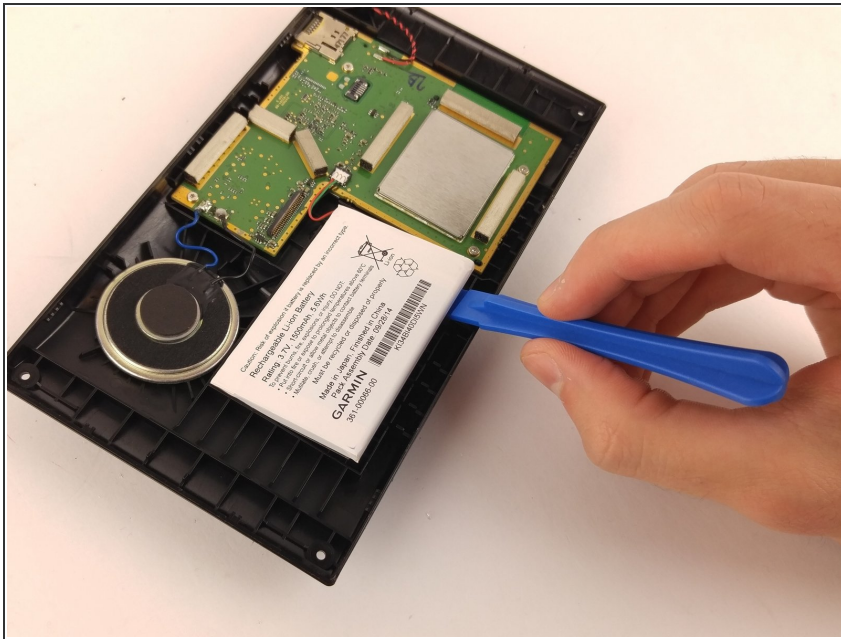
- ⓘ Do not attempt to separate the unit until all the tabs have been separated. Once the seam is completely separated, you can lift the back away from the screen easily.

Step 6



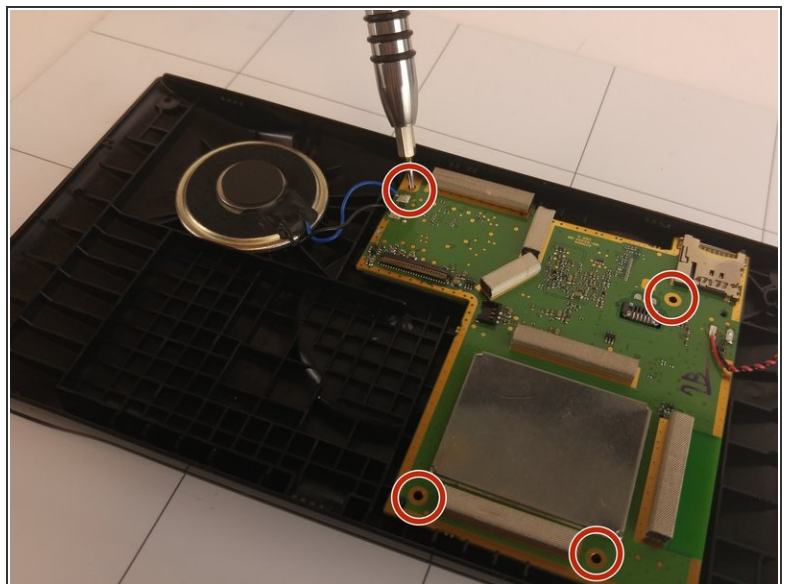
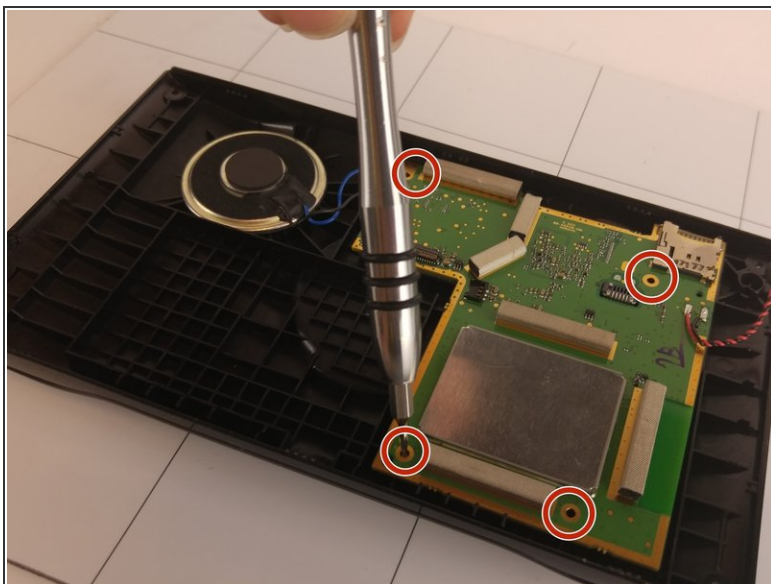
- ⓘ The battery is connected to the main circuit board via two wires, red and green in color, and is attached with a white connector.
- Detach with a pry tool.

Step 7



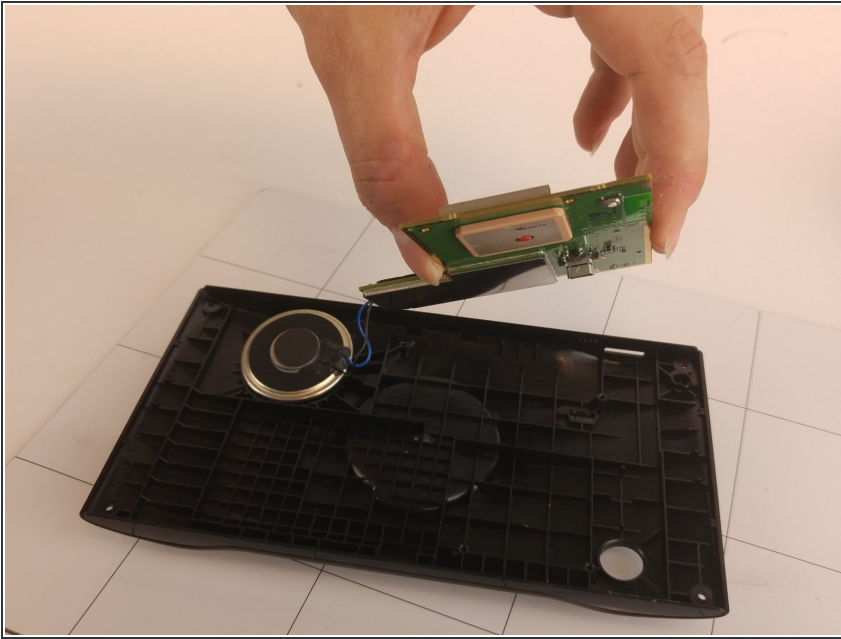
- The white battery is attached to the casing with an adhesive. Separate it with a prying tool.
- ❗ Removing the battery protects it from damage and gives you more room to work.

Step 8



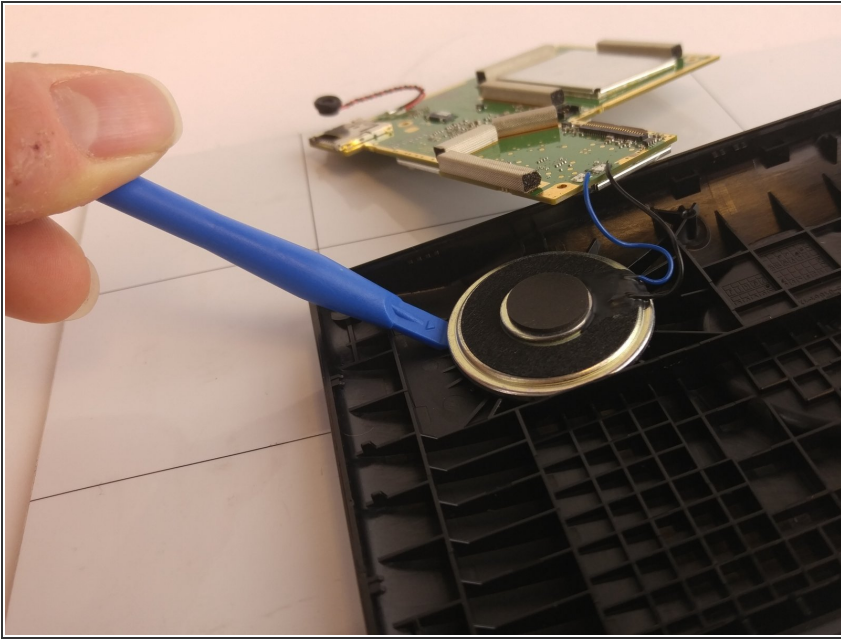
- Remove the four, 4mm hex screws with a T5 bit.
- These are located near the four corners of the main circuit board, as shown.

Step 9



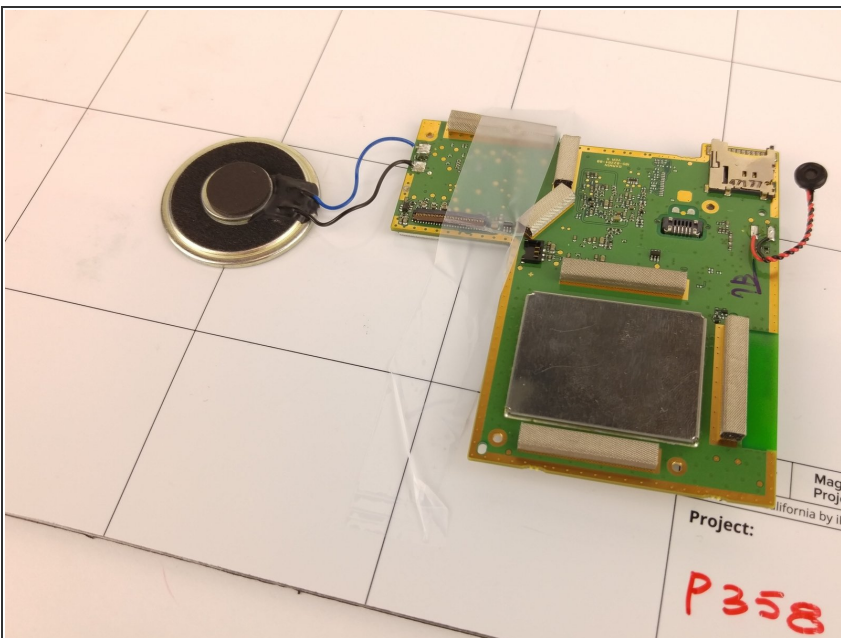
- Carefully pick up and remove the main circuit board from the device's plastic casing.

Step 10



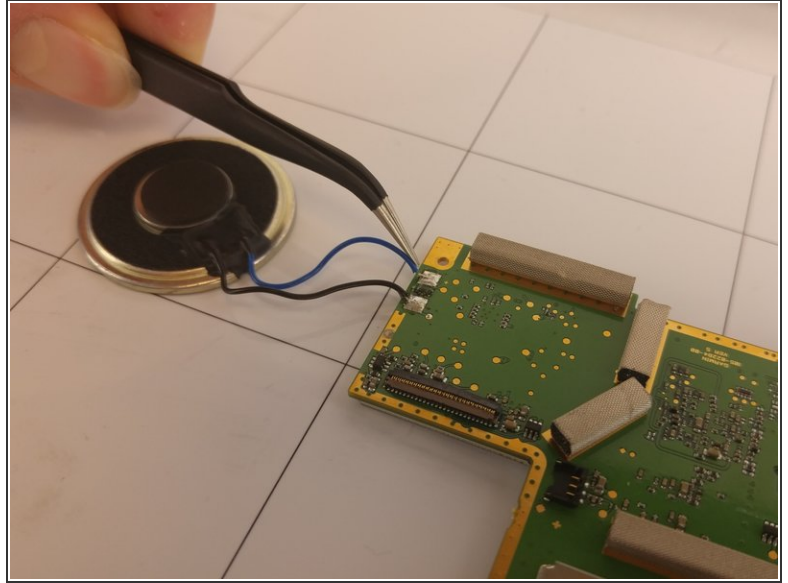
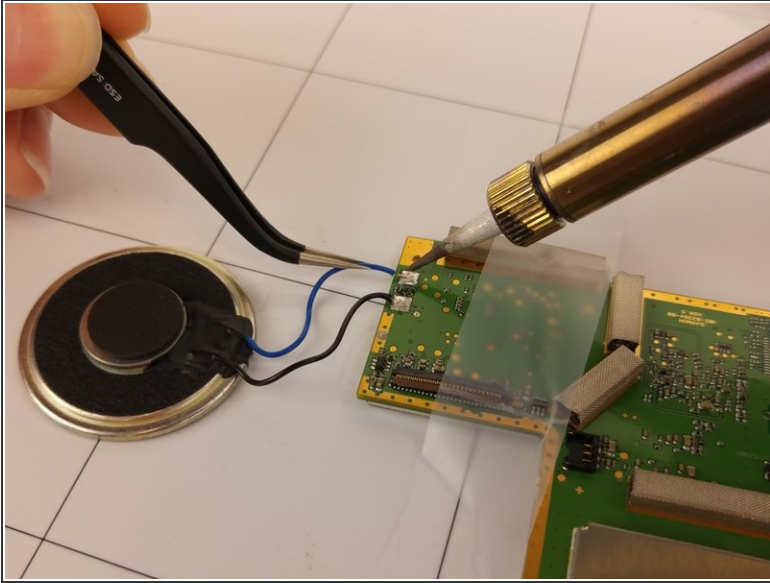
- Remove the speaker - located on the device as shown - from the plastic casing using a prying tool. Use the prying tool around the entire rim of the speaker to ensure a clean removal.

Step 11 — Speaker




- Tape the main circuit board onto a clean surface to steady the device.

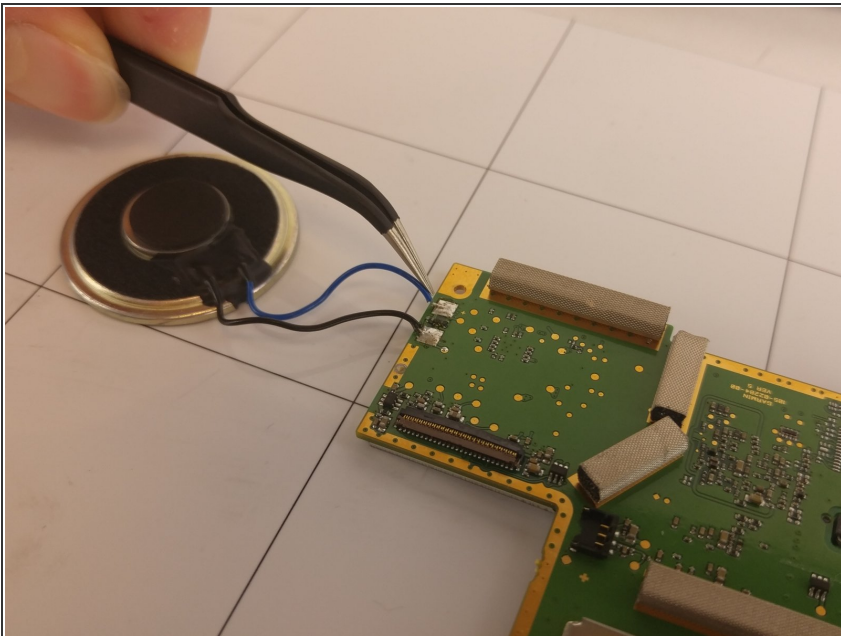
Step 12



- Melt and separate the the two metal connections on the circuit using a soldering iron then remove the wires using tweezers.

 Soldering irons will reach extremely high temperatures and should be used with caution.

Step 13



- Retrieve your replacement speaker and re-solder the wires back onto the main circuit board.
- ☒ Try to keep the solder on the metal contact points. Avoid heating the plastic circuit board.

To reassemble your device, follow these instructions in reverse order.