



# Insignia Flex 11.6 Battery Replacement

If your Insignia Flex 11.6 is not holding a...

Written By: Connor Sweeney



# INTRODUCTION


If your Insignia Flex 11.6 is not holding a charge or is not starting up, use this guide in replacing the battery.

## TOOLS:

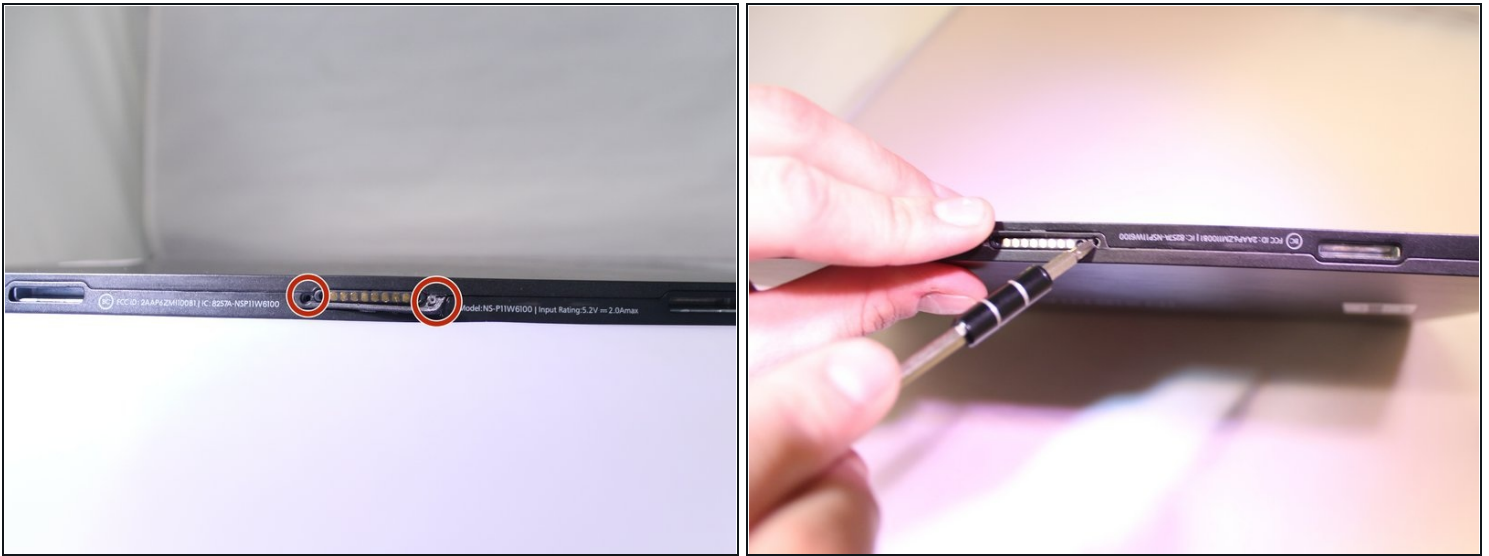
[Plastic Cards](#) (1)  
[iFixit Opening Tool](#) (1)  
[JIS Driver Set](#) (1)

## Step 1 — Battery



-  Before working on the device, make sure the device is off and not plugged into any power source for safety reasons. Failure to comply could result in injury.
- Detach the keyboard from the screen in 2 different places by putting one hand on the keyboard while gently pulling up on the screen with the other hand.

## Step 2



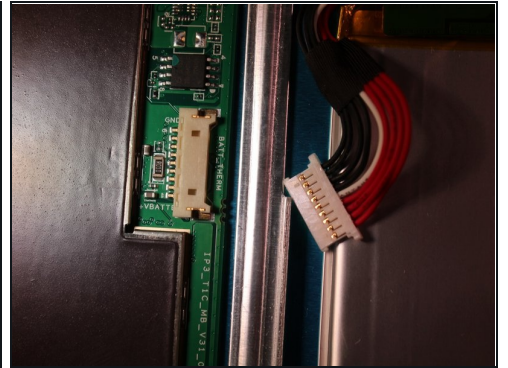
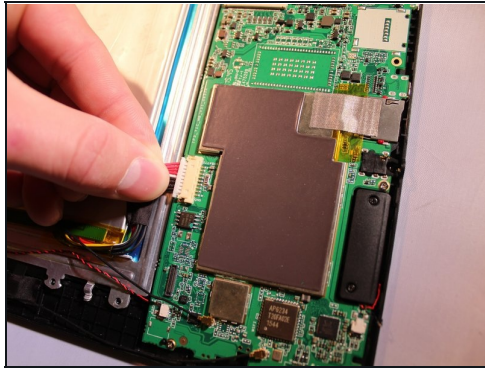
- Remove the two 6.1 mm Phillips J000 screws from the bottom of the device. Use Phillips Screwdriver size J1.
- ⓘ If any screws are stripped, refer to the iFixit guide for [how to remove a stripped screw](#).

## Step 3



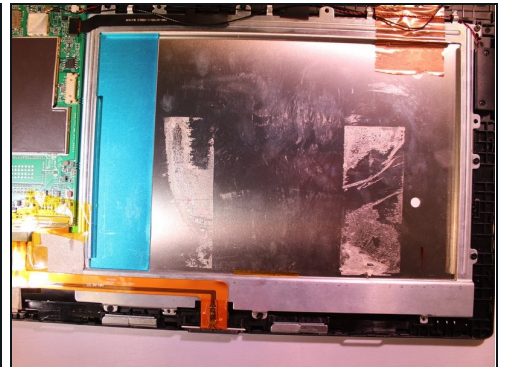
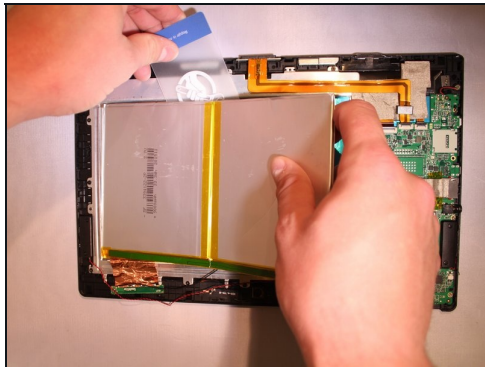
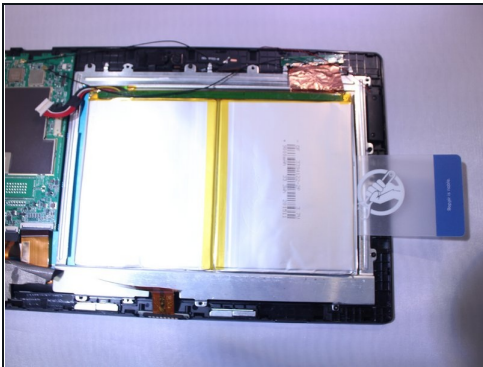
- Using a plastic opening tool, gently pry off the back cover.

## Step 4



- Remove the electrical connector that connects to the battery to remove the power to the battery.

## Step 5



- ⚠ Make sure not to bend the battery too excessively as if bent too much, it could rupture a cell within the battery and possibly cause a fire.
- The battery is glued onto the device. To remove it, use a nylon spudger or [plastic card](#) to slide underneath the battery and scrape back and forth to remove the glue until the battery is removed from the device.

---

To reassemble your device, follow these instructions in reverse order.