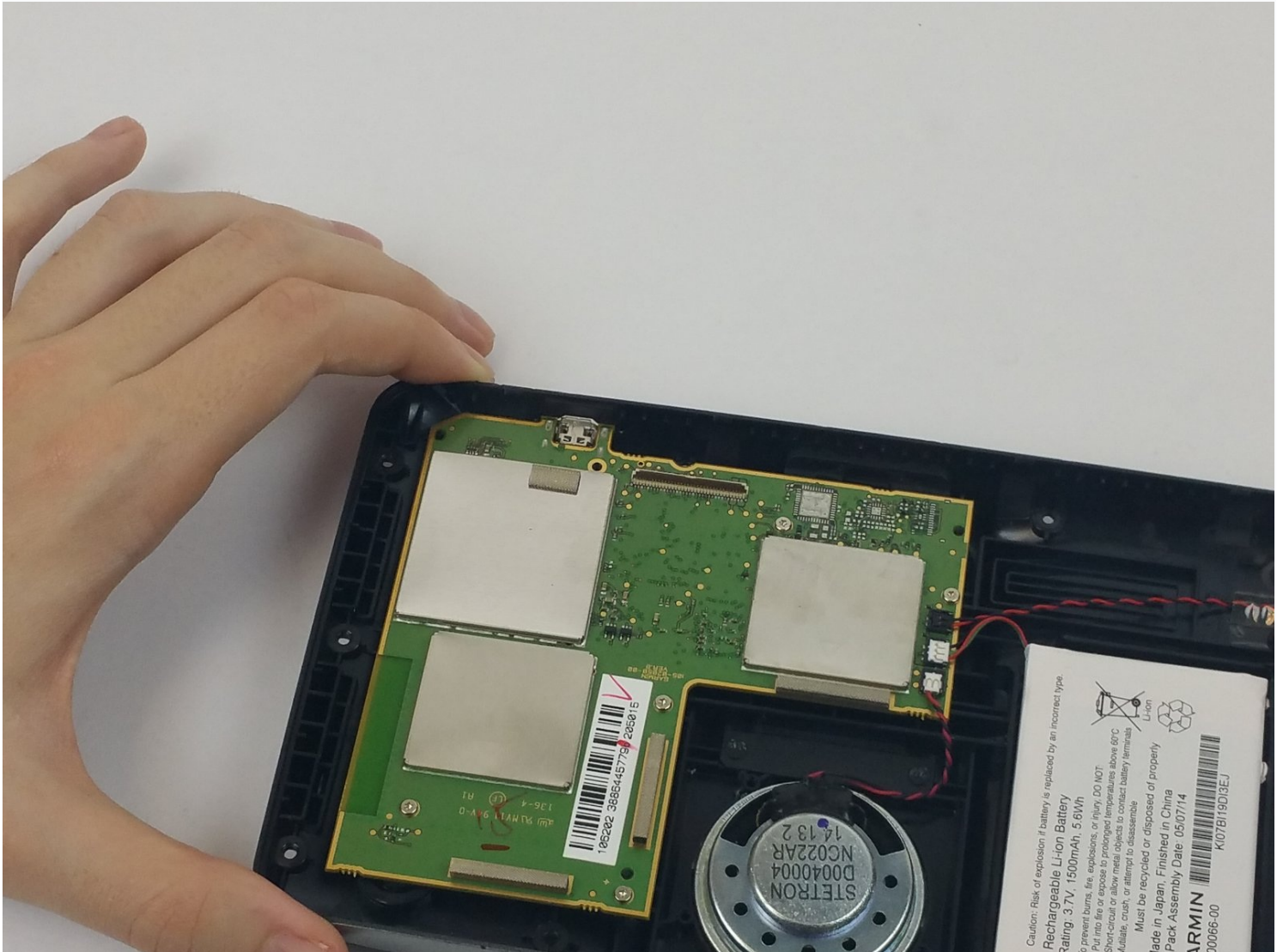




Garmin Dezl 760LMT Motherboard Replacement

This guide will show you how to properly and...

Written By: Ryan Williams



INTRODUCTION

This guide will show you how to properly and safely remove the motherboard from your Garmin, preventing damage to you or the motherboard.

TOOLS:

Anti-Static Wrist Strap (1)

T6 Torx Screwdriver (1)

Metal Spudger (1)

T5 Torx Screwdriver (1)

Step 1 — Back Panel



- Using a Torx T6 Screwdriver, remove the ten 7mm screws from the back panel.

Step 2



- Using a metal spudger, pry the device apart.

☑ To recombine them, line up the two halves of the device and press them together.

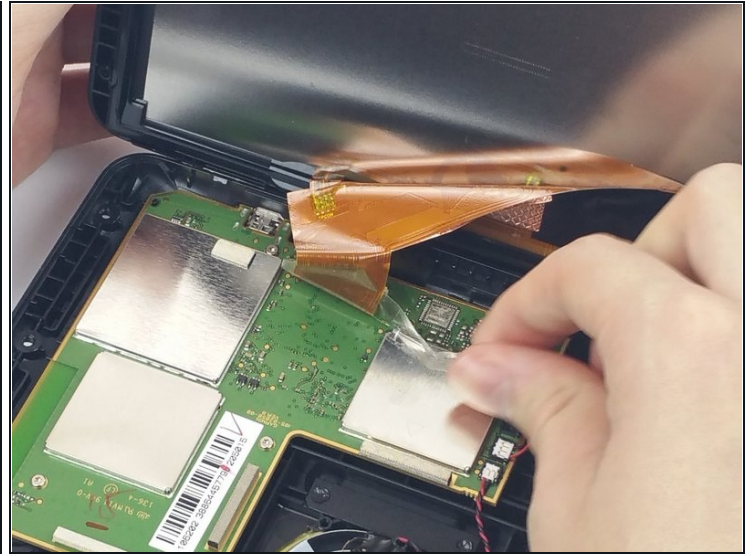
Step 3



- Turn the device over, laying it on its back with the screen facing upwards.
- Lift the front panel away from the silver part of the back panel.

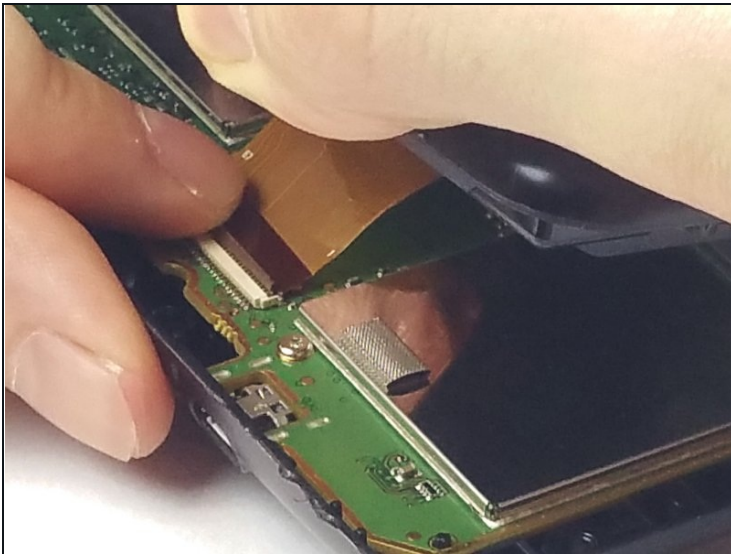
⚠ Make sure not to rip the ribbon cable that is connected to the screen and the motherboard.

Step 4 — Screen Ribbon Cable



- Lift the screen opposite where the "GARMIN" logo is located. Remove the clear tape holding the ribbon cable to the motherboard.

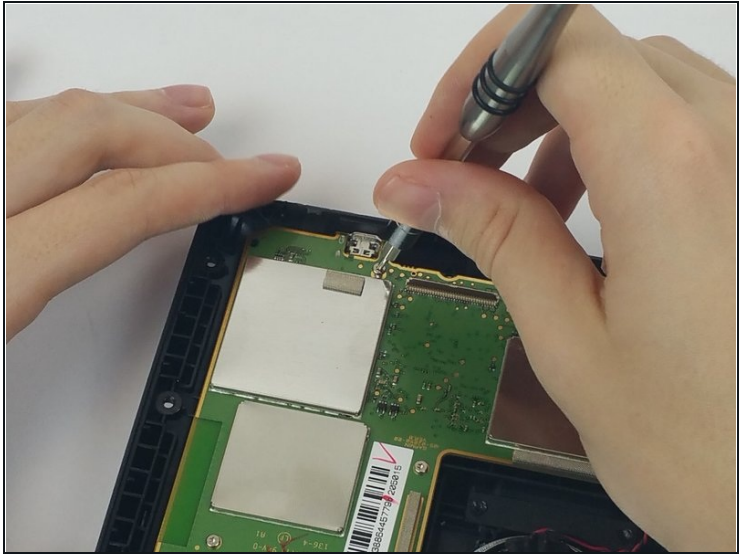
Step 5



- Find and lift the small grey hinge at the end of the ribbon cable.

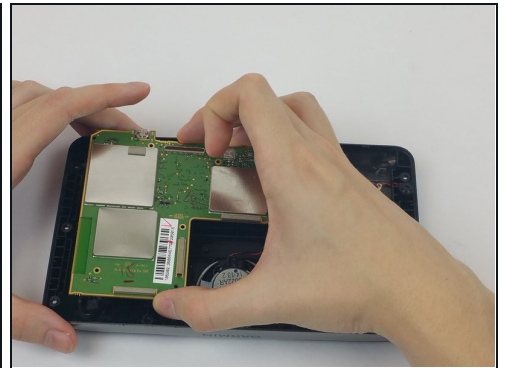
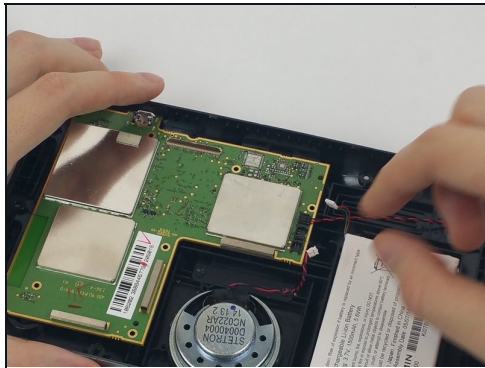
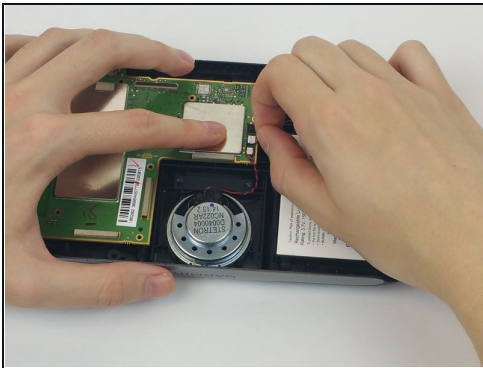
⚠ When handling the motherboard, make sure to wear an [anti-static wrist strap](#).

Step 6 — Motherboard



- Using a Torx T5 screwdriver, unscrew the six 5mm screws on the motherboard.

Step 7



- Grasp each of the three wires near where it is attached to the motherboard. Lift them upward to detach them.
- Lift the motherboard from the device.

To reassemble your device, follow these instructions in reverse order.