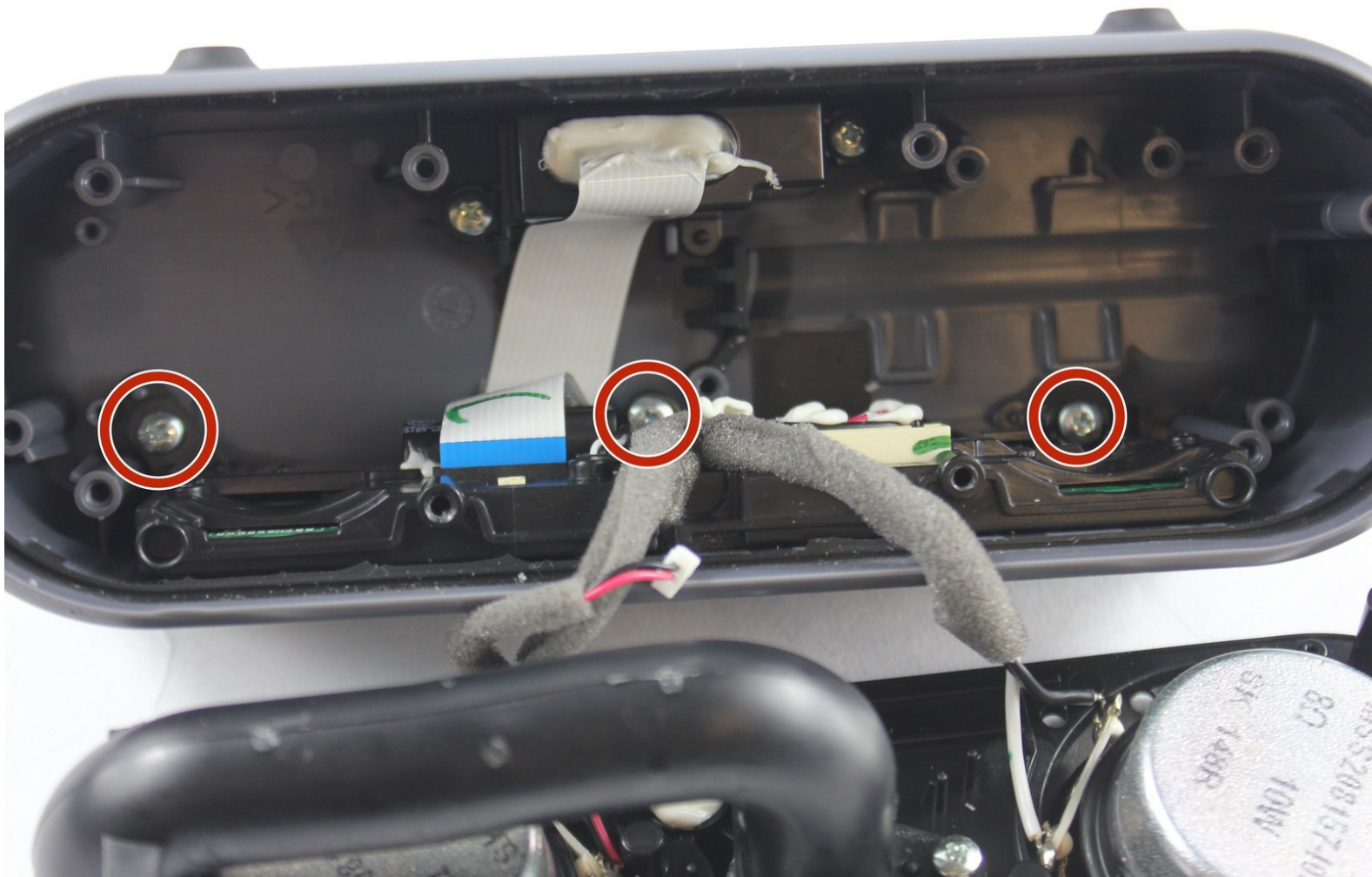




# SONY SRS-X2 Motherboard Replacement

This guide will show you how to successfully replace the motherboard of your Sony speaker.

Written By: Yubei Wu





## TOOLS:

- [Metal Spudger](#) (1)
  - [Phillips #1 Screwdriver](#) (1)
  - [iFixit Opening Tools](#) (1)
  - [Soldering Iron](#) (1)
-

## Step 1 — Face Plate



- Use the metal spudger to pry the face screen open. Pull away from the device to remove.

## Step 2





- Remove seven, 27 mm long Phillips #1 screws.
- Remove three, 11mm long Phillips #1 screws.
- Remove four, 10 mm long Phillips#1 screws.

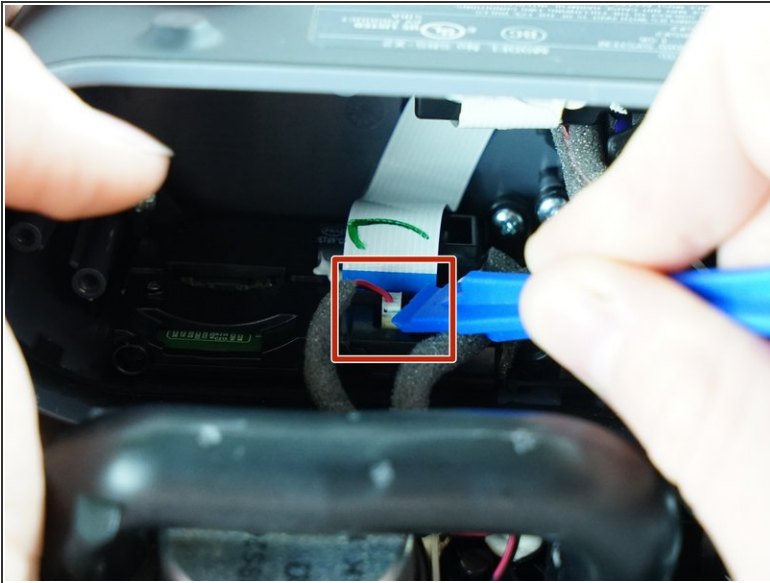


### Step 3



-  Before removing the host plate, face the feet of the speaker to you. The wiring allows for minimal access to the inner components.
- Use the spudger to remove the speaker host plate. Insert the metal tip in the seam between the host plate and the shell.
-  Be very careful when pulling the speaker host plate (described in the next step) as there are wiring connected to the host plate. This wiring is soldered to the plate and to the shell of the device. The wires are flexible and you can still open the device as shown in the second picture.
- Center the spudger on the top of the device, this is furthest from the wiring, in wiggling the spudger under the plate, the plate should move up and out of the shell, you can finish lifting the plate away with your fingers.

## Step 4

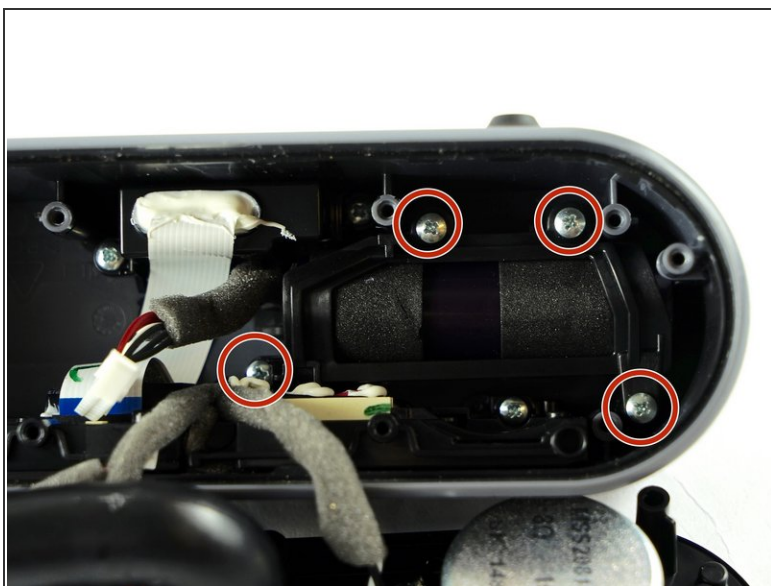


⚠ Be gentle when using the opening tool, wiggle the opening tool on each side of the socket to be sure the plastic does not snap.

⚠ Be careful not to damage the wires, pull from the plastic base to unplug.

- Unplug the power cable connector shown using the plastic opening tool. Wiggle the tool under the lip of the plug, the smaller area and odd angle means lifting up with the plastic tool in the setup shown.
- Unplug the power connector shown using the plastic opening tool lift from the front of the plug shown and move the opening tool to either side to get it all the way out of the socket.

## Step 5 — Battery



- Remove the four, 11 mm, Phillips#1 screws on the battery cover plate.

## Step 6



- Remove the battery cover plate carefully then proceed to remove the battery.



## Step 7 — Motherboard



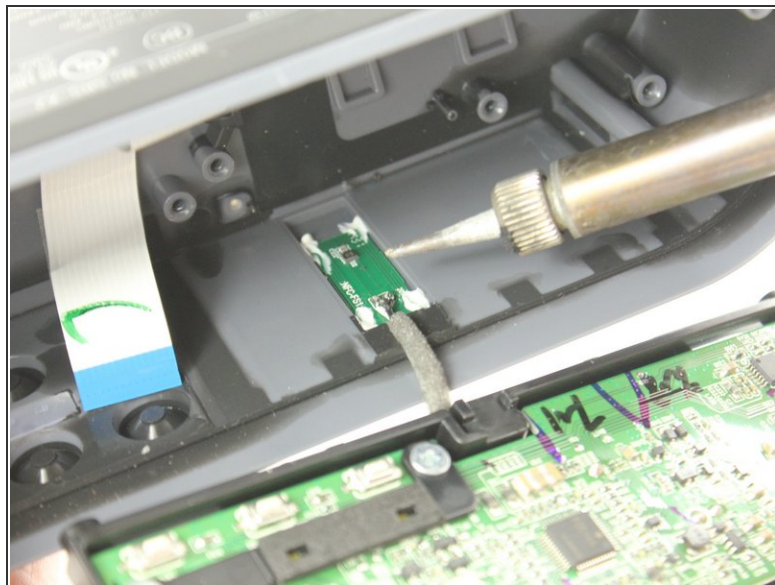
- Use PH1 screwdriver to remove three 11mm Phillips head screws that are holding the motherboard together.

## Step 8



- Gently use your fingers to pull out the white ribbon.

## Step 9



- Pull the motherboard out of the speaker slowly, gently flip it upside down to find the wire that soldered to the ceiling of the speaker.
- Use a hot soldering iron and detach the wire.
- Once the motherboard is disconnected, it can be removed for replacement.

To reassemble your device, follow these instructions in reverse order.