



Archived

HP Envy 15-u001dx Battery Replacement

The 11.4V battery powering the hp envy is...

Written By: Dakota Presley



INTRODUCTION

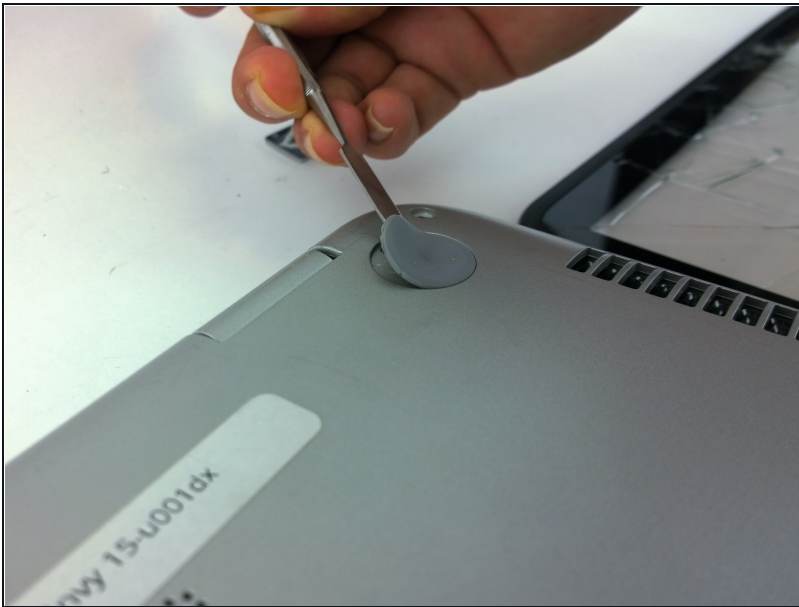
The 11.4V battery powering the hp envy is stored inside the bottom part of your laptop. To access the battery the laptop must be taken apart.

TOOLS:

Phillips #0 Screwdriver (1)

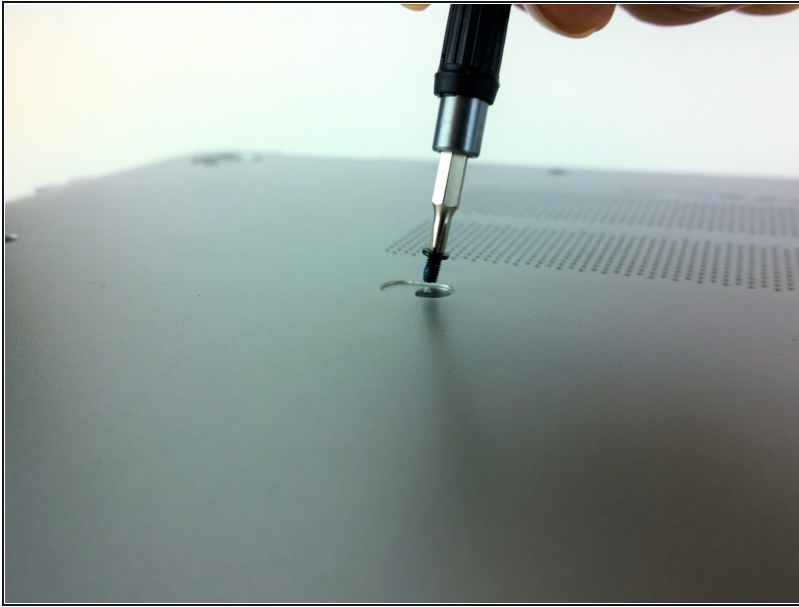
Spudger (1)

Step 1 — HP Envy 15-u001dx Disassembly



- Remove the two no-slip covers on the rear, bottom side using spudger shown in top center of picture.
- ① The two in the front do not have to be removed as there are no screws underneath them.

Step 2



- Remove the two cover tabs towards center of the bottom as there are screws underneath them.

Step 3



- Remove all fourteen 4.5 mm screws from the bottom using a Phillips #0 screwdriver. Each location is marked by a red circle in the picture.

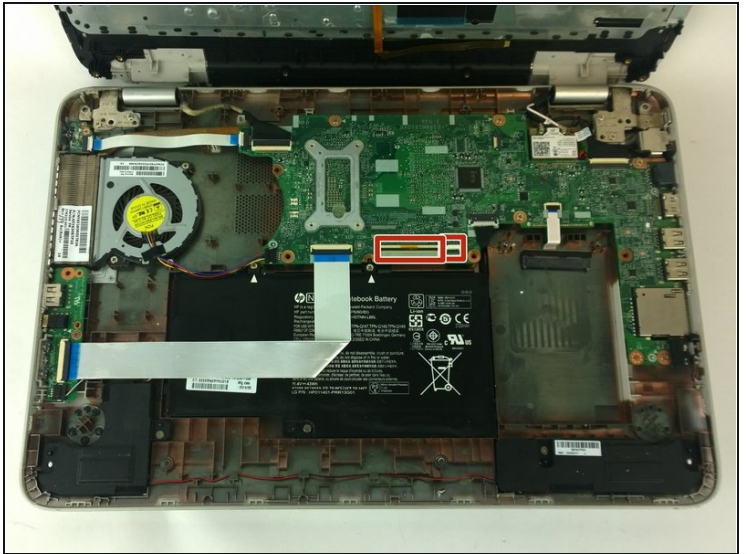
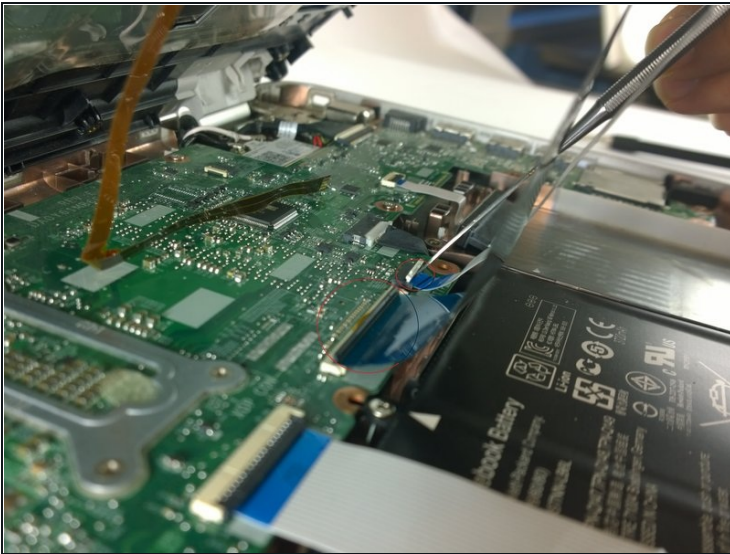
Step 4



- Separate the top cover by using a spudger to go around the sides freeing the inside latches.

⚠ Once the bottom is free, carefully open to the inside as there are two ribbons that connect your keyboard and touch pad to the top cover.

Step 5



- Use the spudger to detach the two ribbons from their connectors.

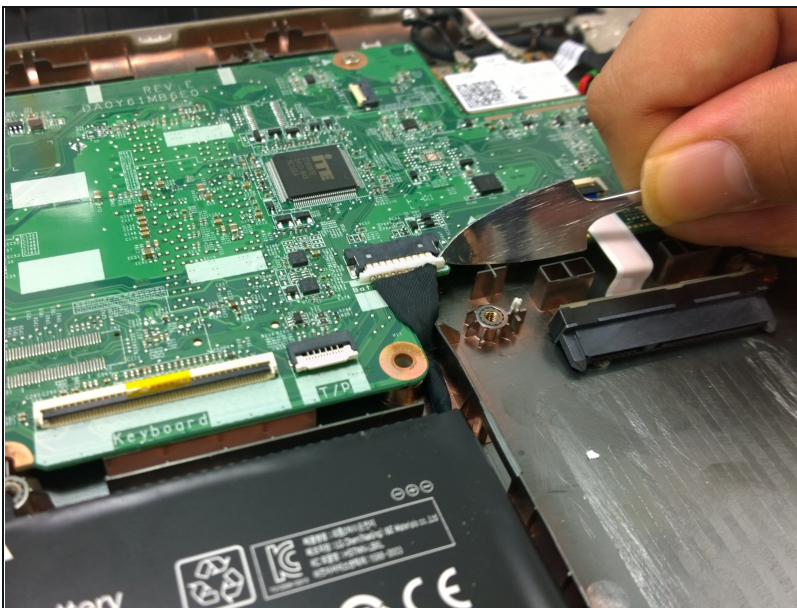
⚠ The regular black nylon spudger should be used whenever possible, especially around sensitive internal components.

Step 6 — Battery



- Remove the three 3 mm screws from the battery using Phillips #0 screwdriver.

Step 7



- Use a spudger to gently detach the battery connector.

⚠ The regular black nylon spudger should be used whenever possible, especially around sensitive internal components.

To reassemble your device, follow these instructions in reverse order.