



HP Envy 15-u001dx Wireless Network Card Replacement

Written By: Dakota Presley

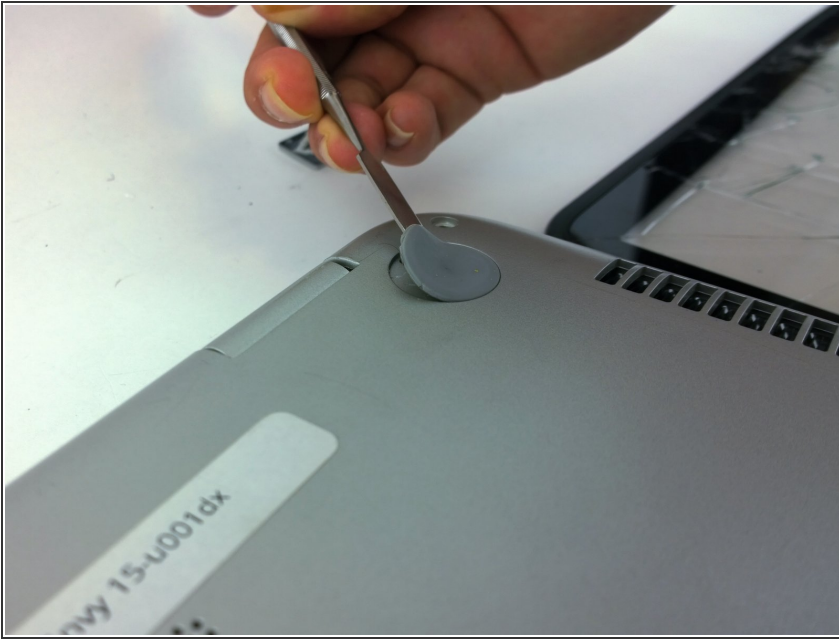




TOOLS:

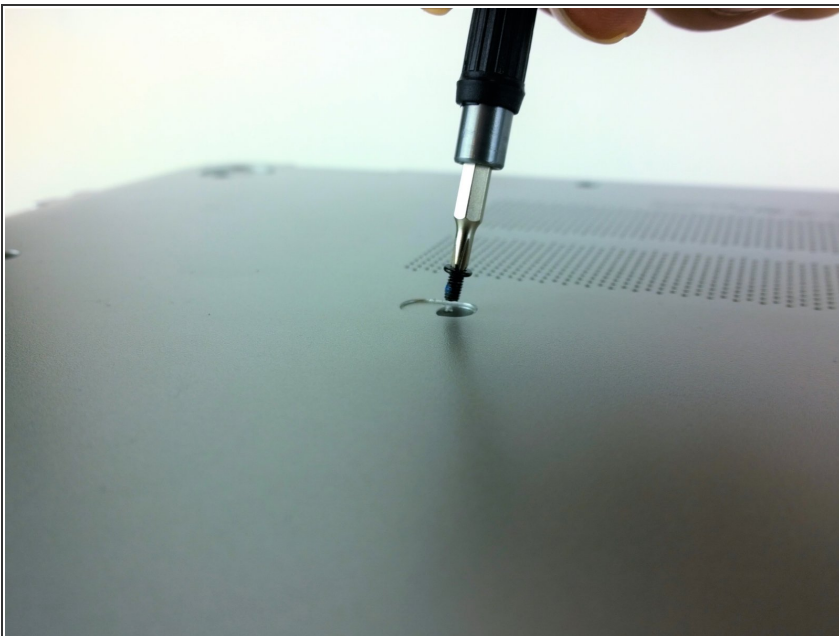
- [Phillips #0 Screwdriver](#) (1)
 - [Spudger](#) (1)
-

Step 1 — HP Envy 15-u001dx Disassembly



- Remove the two no-slip covers on the rear, bottom side using spudger shown in top center of picture.
- ⓘ The two in the front do not have to be removed as there are no screws underneath them.

Step 2



- Remove the two cover tabs towards center of the bottom as there are screws underneath them.

Step 3



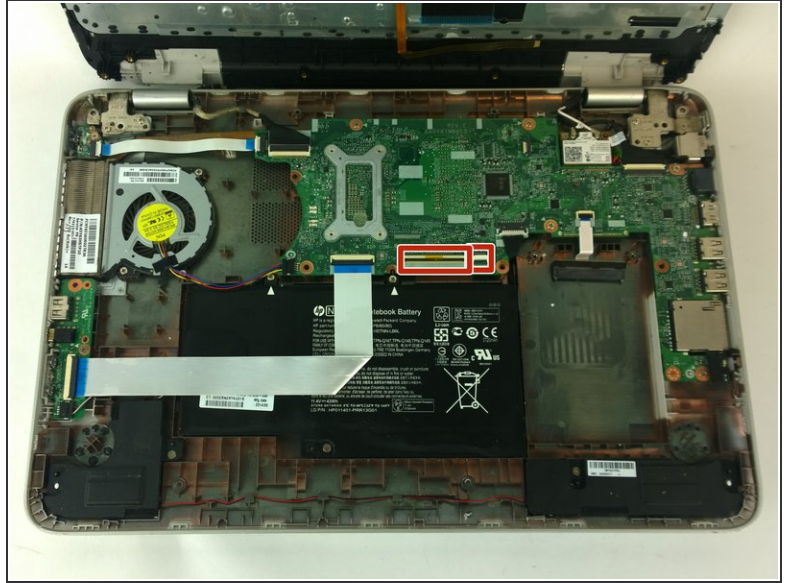
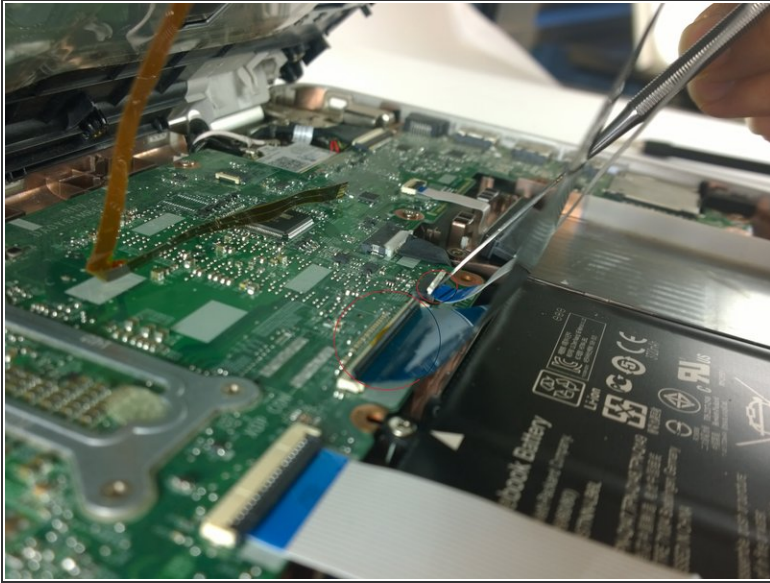
- Remove all fourteen 4.5 mm screws from the bottom using a Phillips #0 screwdriver. Each location is marked by a red circle in the picture.

Step 4



- Separate the top cover by using a spudger to go around the sides freeing the inside latches.
- ⚠ Once the bottom is free, carefully open to the inside as there are two ribbons that connect your keyboard and touch pad to the top cover.

Step 5



- Use the spudger to detach the two ribbons from their connectors.

⚠ The regular black nylon spudger should be used whenever possible, especially around sensitive internal components.

Step 6 — Wireless Network Card



- Remove the Phillips #0 4.5 mm screw from the wireless network card located in the back, right side of the interior.

Step 7



- Use the spudger to remove the antenna connector attached to the black wire labeled "1".

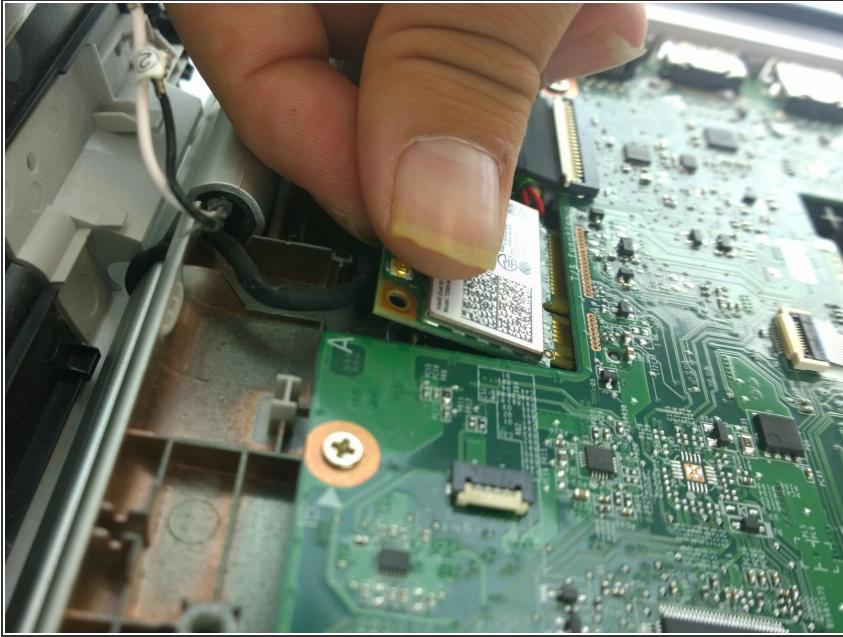
⚠ The regular black nylon spudger should be used whenever possible, especially around sensitive internal components.

Step 8



- Detach the antenna connector for the white wire labeled "2".

Step 9



- Gently remove the card from its slot by pulling.

To reassemble your device, follow these instructions in reverse order.