



e-lite web150 Disassembly

Dismantling an e-lite web150 leaf blower.

Written By: Alex Pollard



INTRODUCTION

Im going to show how to open a leaf blower and put it back together. possibly for cleaning purposes.



TOOLS:

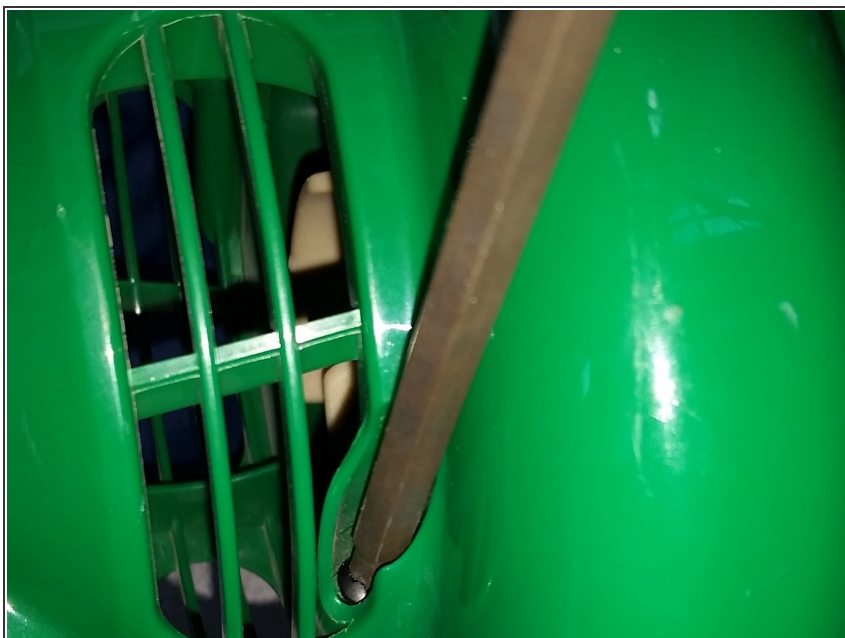
- [Phillips Screwdriver](#) (1)
-

Step 1 — removing the blower nozzle



- Firmly press the yellow button and slide the blower nozzle off.

Step 2 — un-screwing



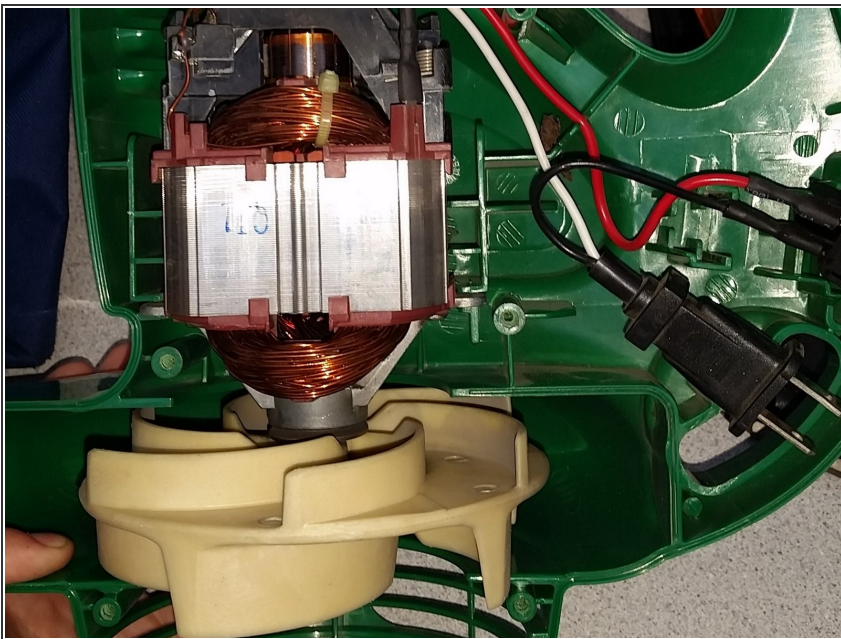
- un-screw all of the screws

Step 3 — opening



- pull apart the 2 halves

Step 4 — The inside



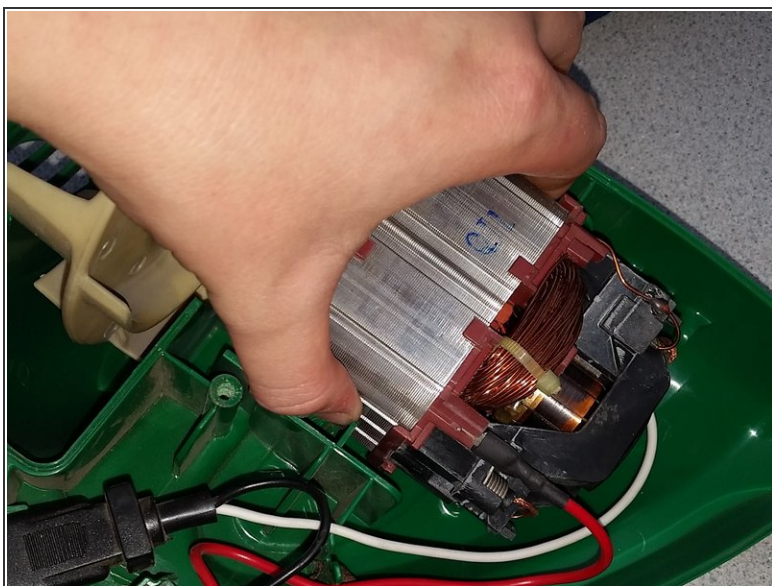
- This is the inside of the blower

Step 5 — pulling out the switch and plug



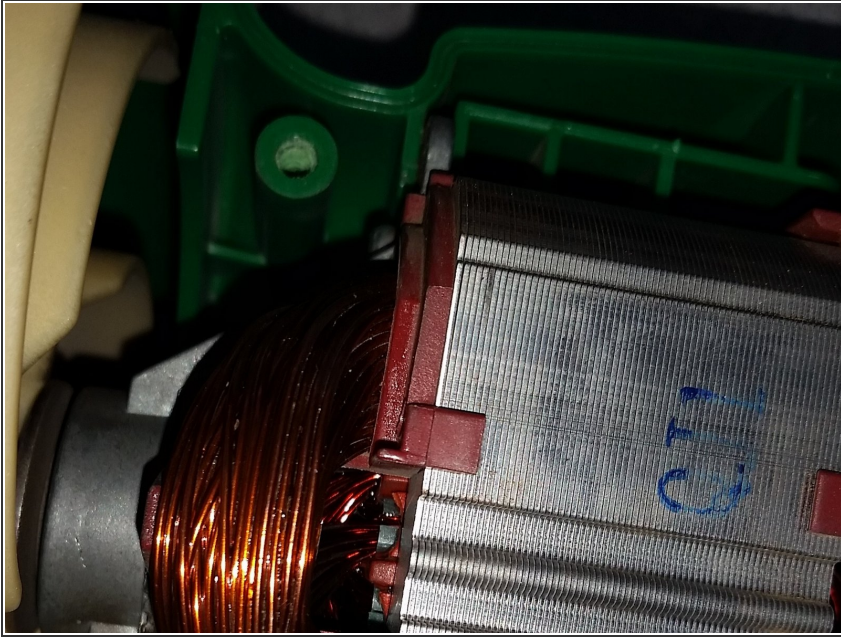
- gently pull out the power plug and switch

Step 6 — removing the motor



- gently pull out the motor paying attention to which side it came out of.

Step 7 — putting the motor back in



- clean the dust out if you need to. then carefully put the motor back in making sure you put both of the tabs on the motor into their respective slots. you can't see the other one because I had to crop it out.

Step 8 — putting the plugs back in their places



- carefully put the plugs back into their holders.

Step 9 — closing it up



- fit the 2 halves back together

Step 10 — screwing in the screws



- replace all of the screws

Step 11 — re-attaching the blower nozzle



- slide the blower nozzle on to the main body until it locks in place, you are done.