



# Sungale CyberUs Battery Replacement

Replace your dying battery to bring the power back to your tablet.

Written By: Grayson Heinbaugh



## INTRODUCTION

When the life or strength of your battery starts to diminish, you may want to look into a battery replacement. Here is all steps needed to change the battery in your Sungale CyberUs.

---

### TOOLS:

- [Tweezers](#) (1)
  - [Phillips #000 Screwdriver](#) (1)
  - [iFixit Opening Tools](#) (1)
-

## Step 1 — Screen



**⚠ Make sure to have the device turned off to prevent any minor electric shock.**

- Hold the device so the left side is facing towards you (like in the picture shown) so the two 4mm PH001 screws are exposed and easier to access.

## Step 2



- Remove both 4mm PH001 screws from the side panel.

### Step 3



- Carefully pry up one of the top corners of the screen with a plastic spudger (prying tool). Slide the tool along the edges to release it from the housing.
- ⓘ The screen may make some cracking noises as you pry it from the casing. This is expected.
- The screen is still connected to the motherboard. Use force with caution.

### Step 4



- Gently turn screen over, to the side, to reveal the ZIF connector attached to the motherboard.



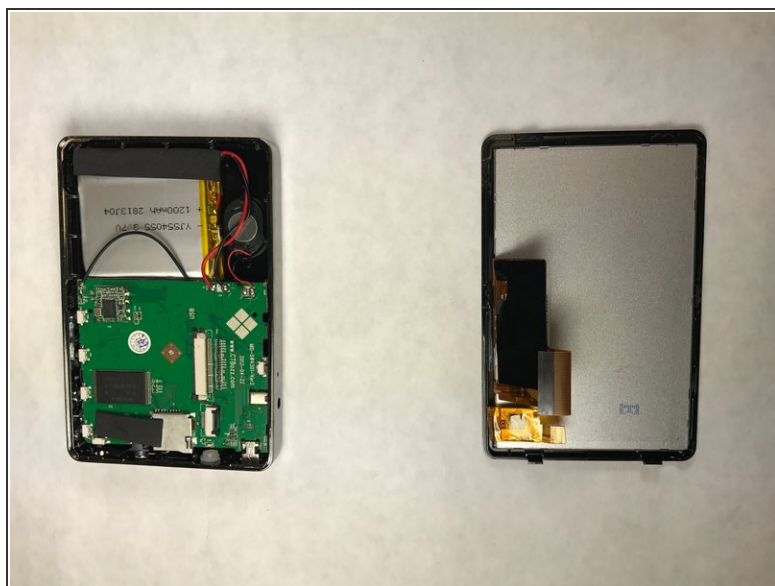
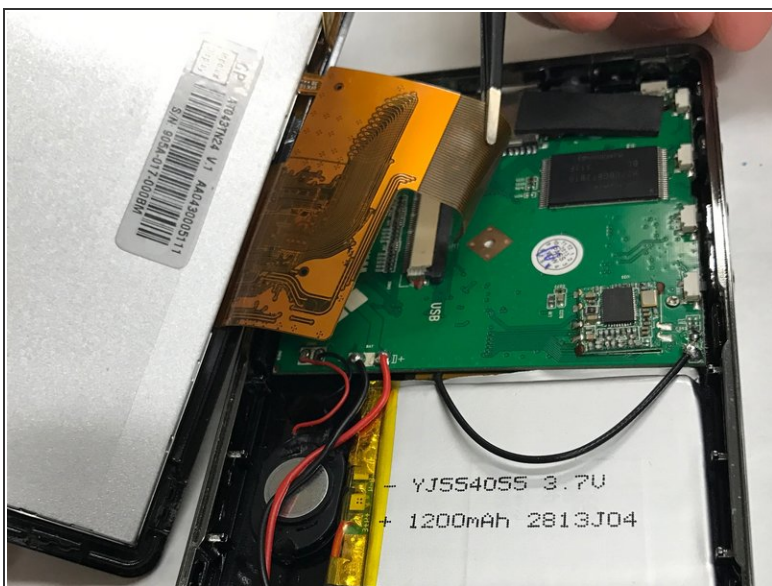
## Step 5



- Gently using tweezers, flip the black clip up. Pull the ZIF connector out.

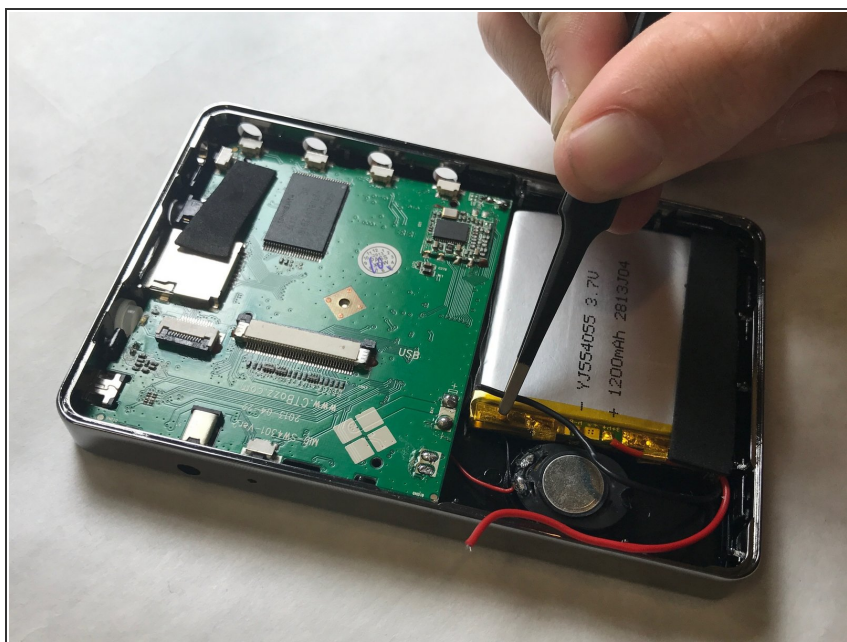
**i** You screen is still not completely detached from the device.

## Step 6



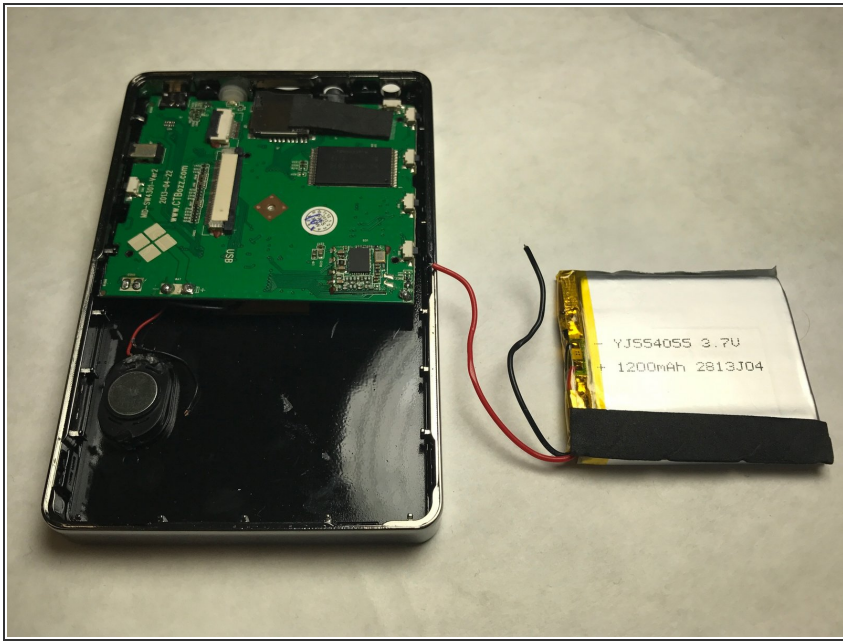
- Using the prying tool, slide the black clip out. Pull the ZIF connector out and to the left, the screen is now detached from the motherboard.

## Step 7 — Battery



- Now, carefully we will remove the battery. Find the leads, or the red and black wires going to the battery from the motherboard. To free the wires you must cut the wire near the battery leads. Make sure both ends are clean and have enough exposed wire.

## Step 8



- i** You will have to clean the connections and solder the new battery back into place. Just as before, you want to reconnect the new battery to the motherboard.

To reassemble your device, follow these instructions in reverse order.