



# Minolta QTsi Maxxum Eyelet Straps Replacement

This guide will show you how to replace the eyelet straps.

Written By: Maya Van Londen



## INTRODUCTION

Replace your broken eyelet strap so that you can wear a strap with your Minolta QTsi Maxxum camera.



### TOOLS:

- [Coin](#) (1)
  - [Phillips #00 Screwdriver](#) (1)
-

## Step 1 — Eyelet Straps



- ★ The battery compartment is located on the bottom panel of the camera.
- Use a coin to open the battery compartment of the camera.
- ⓘ Twist the coin counterclockwise in order to release the latch.

## Step 2



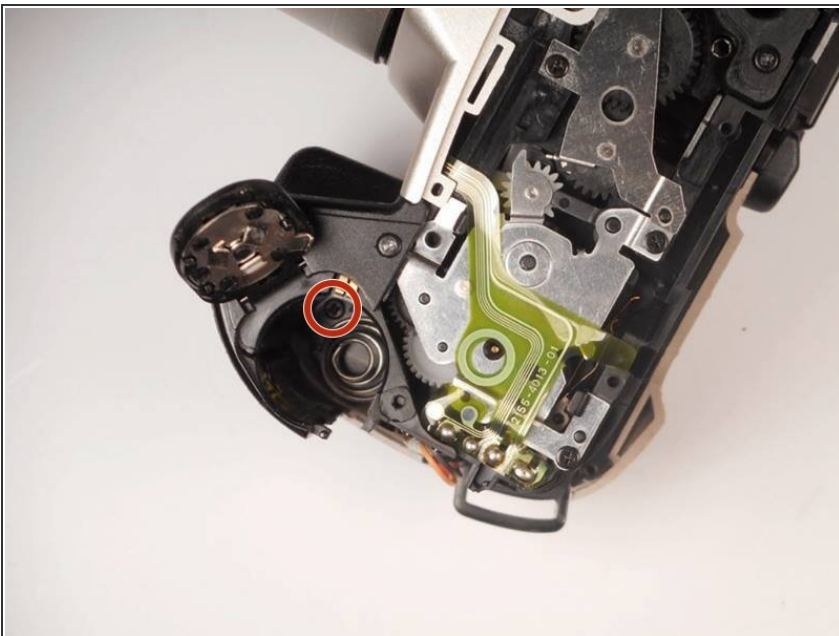
- Once the compartment is open, grab the batteries and pull them out of the compartment.
- ⓘ There should be two batteries inside the battery compartment.

### Step 3



- With a screwdriver, remove the (7) black Phillips #00 5mm screws on the bottom of the camera.
- ⓘ The screws are located on the outer edge of the bottom panel.
- ⚠ Be careful when removing the screws from the panel because they are easy to lose.
- Once all the screws are removed, the panel should easily come off.

### Step 4



- ⓘ Once the bottom panel is removed, the one screw at the bottom of the battery compartment should be visible.
- Remove the (1) black Phillips #00 5mm screw from the battery compartment.



## Step 5



- Press the release button on the side panel to pop open the back piece of the camera.

## Step 6



- ① Once the back panel is open, the chamber containing one screw should be visible.
- Remove the (1) black Phillips #00 5mm screw inside.

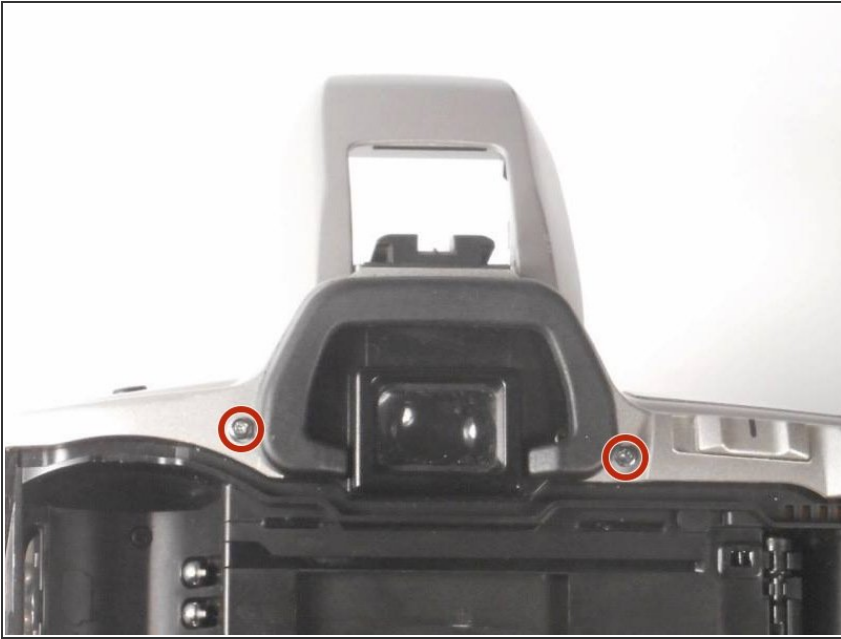
## Step 7



- Take out the (2) Phillips #00 5mm screws on the right side panel of the camera.
- Remove the (1) Phillips #00 5mm screw on the left side panel of the camera.
- Remove the side panels from the camera and set them aside .

⚠ Be careful when removing side panels. There is a plastic piece and spring underneath the left side panel that could get lost.

## Step 8



- i** When looking at the back of the camera, there should be a single screw on each side of the viewfinder.
- Remove these (2) silver Phillips #00 5mm screws from each side of the viewfinder.

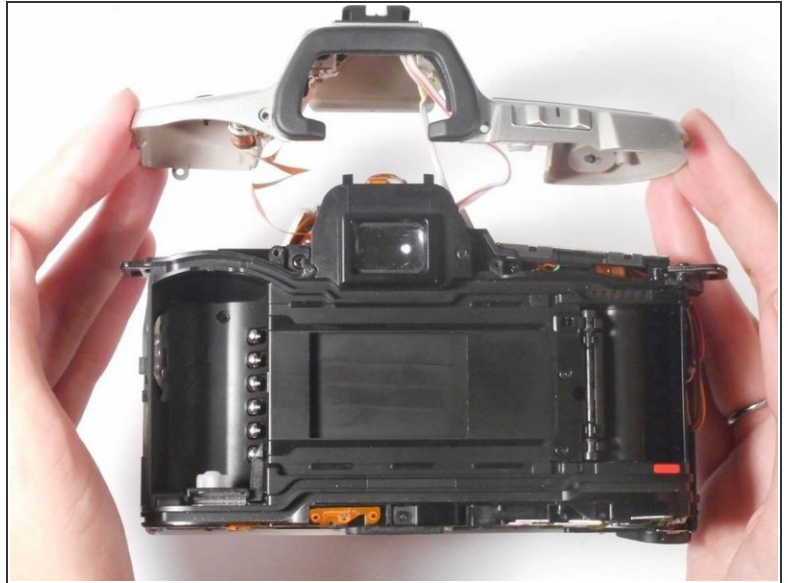
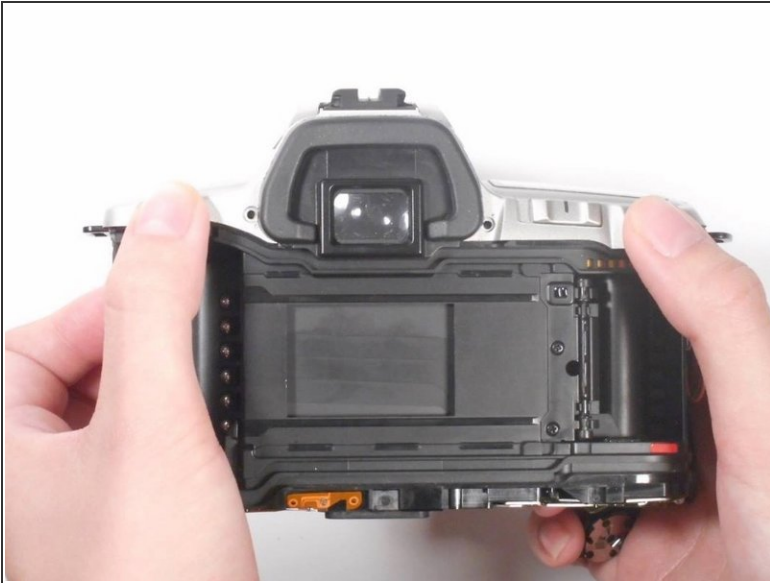
## Step 9



- i** When looking at the top of the camera, the flash hood is visible.
- Lift the flash hood and remove the (1) silver Phillips #00 5mm screw.



## Step 10

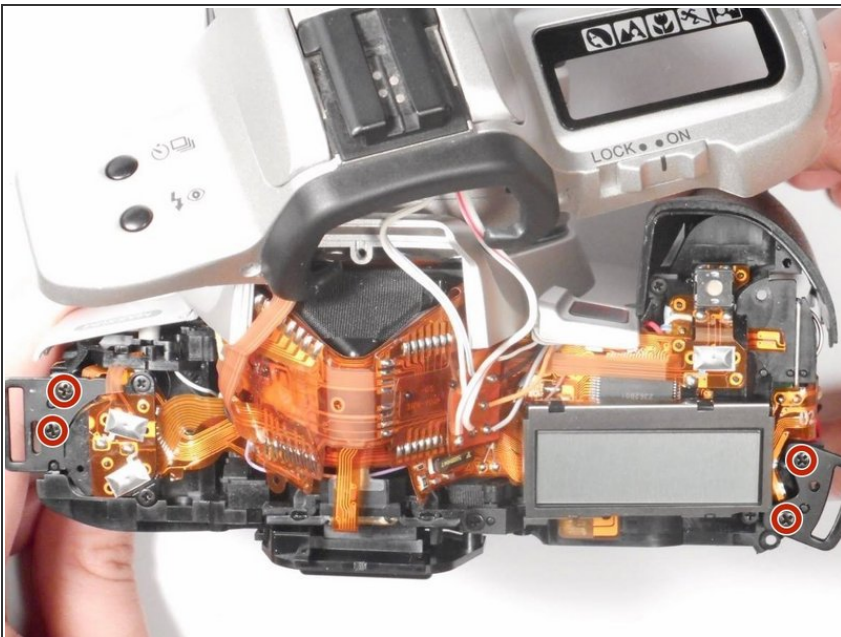


**i** The top panel of the camera should now be easy to pop off. If it is not, make sure that all screws listed in steps 3-9 are removed.

- Lift the top panel away from the rest of the camera.

**!** Be careful when removing the top panel because there are wires connected to it.

## Step 11



**i** Once all parts of the camera are removed, both eyelet straps should be visible on the top left and right sides.

- Unscrew the (4) black Phillips #00 5mm screws to remove each eyelet strap holder and replace them.



To reassemble your device, follow these instructions in reverse order.