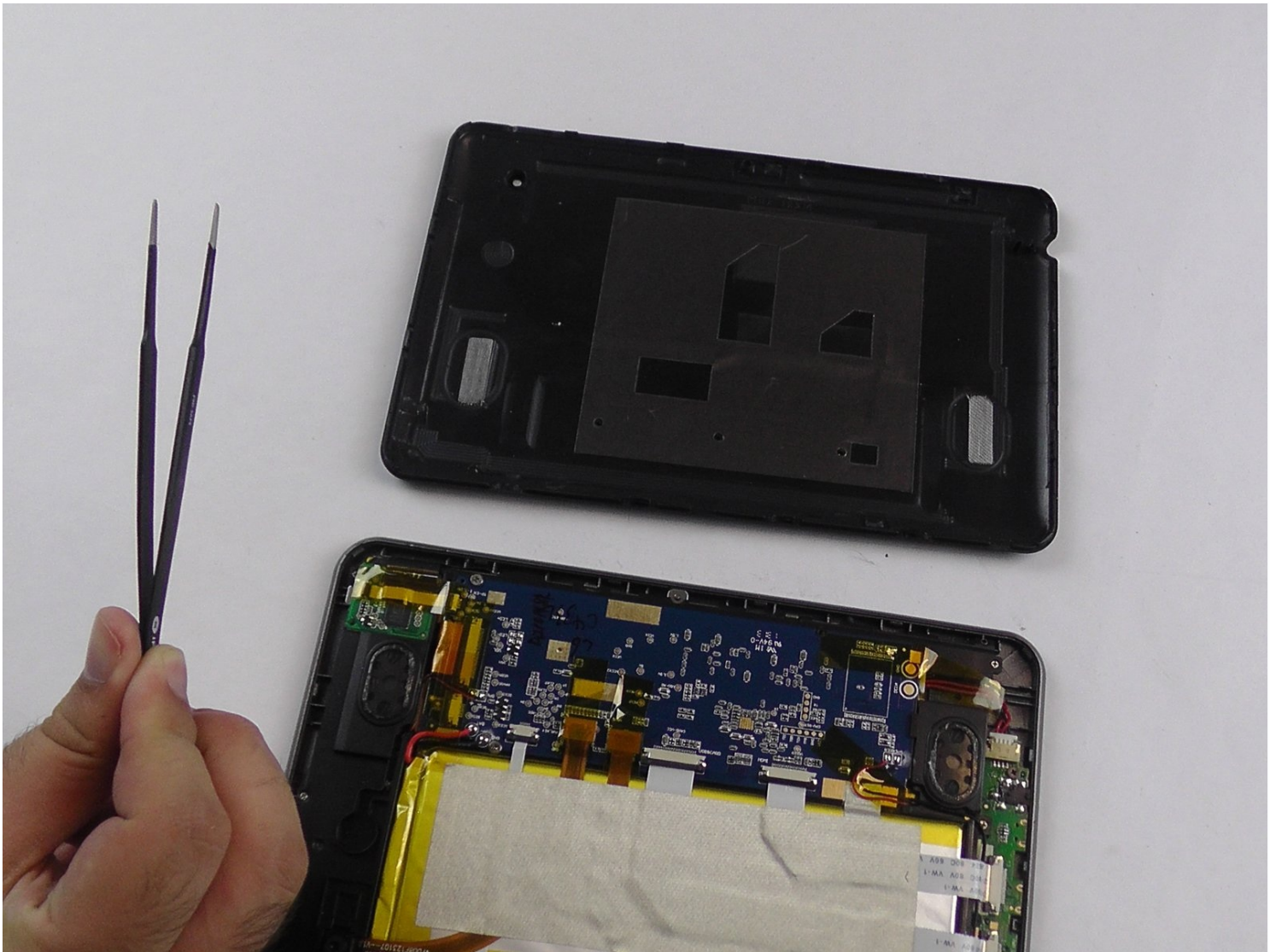




# Neo3Do Wire Replacement

Written By: Michael Whitehead



## TOOLS:

iFixit Opening Tool (1)

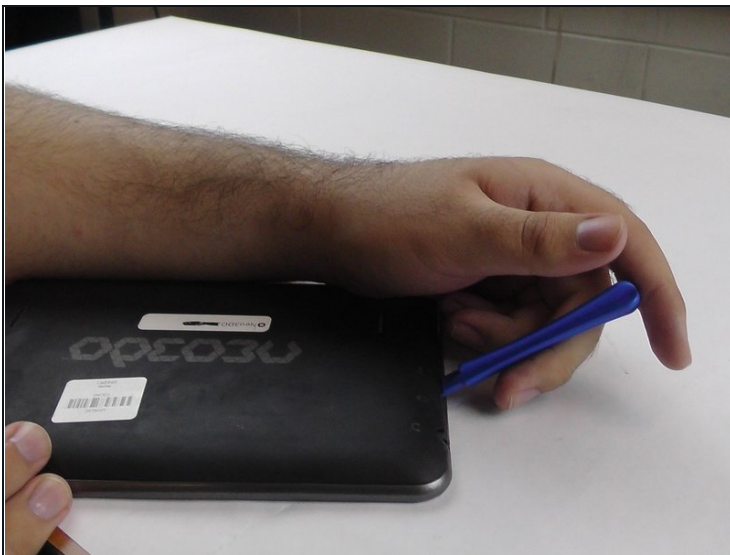
Tweezers (1)

### Step 1 — Back Panel



- Turn the Neo3DO face down so that the logo is facing toward you.
- Insert the plastic opening tool between the metal frame and the plastic back panel, as shown.

### Step 2



- Gently pry the back panel upwards.

 Ensure the tool does not slip into the device and damage the internals.



### Step 3



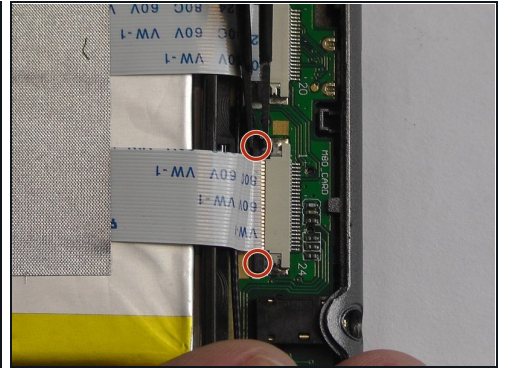
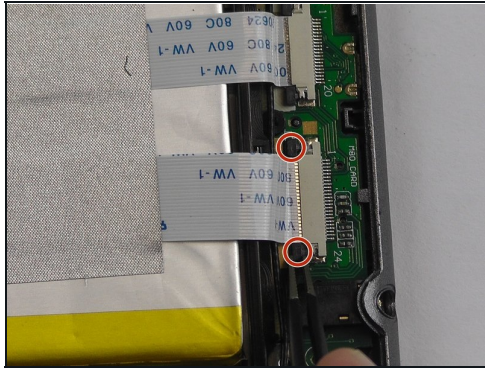
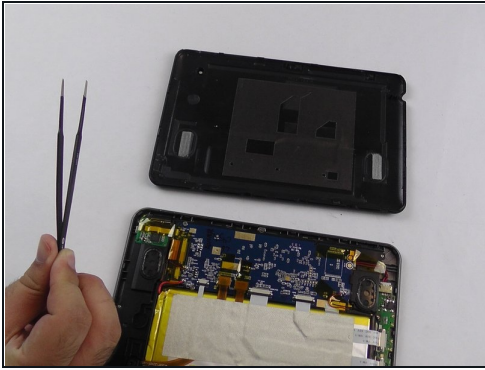
- Once the back panel has been pried away from the bottom and sides of the Neo3DO, lift the back panel up and away from the tablet.

### Step 4



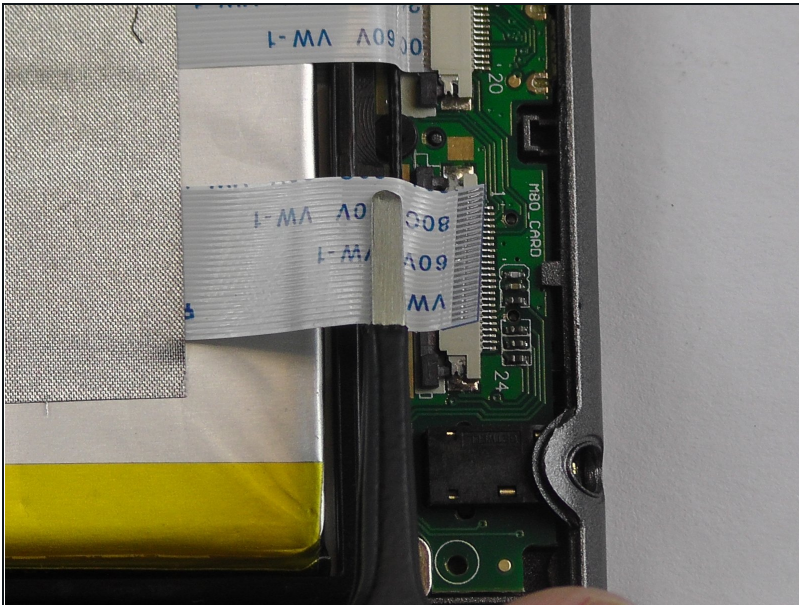
- When replacing the back panel, place the top edge of the back panel against the top edge of the Neo3DO, as shown.
- ① The top edge of the device is the edge closest to the camera. The top of the back panel is the side with the hole for the camera.

## Step 5 — Wire



- Starting with an open back panel, take your [tweezers](#) and use them to pull back the black tabs on the connector.

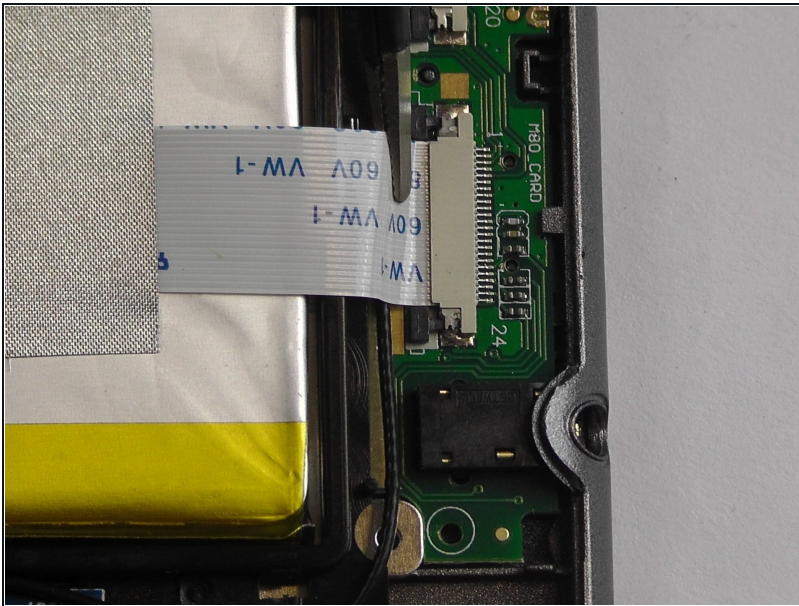
## Step 6



- Pull the wire completely from the socket.
- ⓘ Check the metallic parts for signs of damage or corrosion. If either exists, you might need to replace the battery entirely.

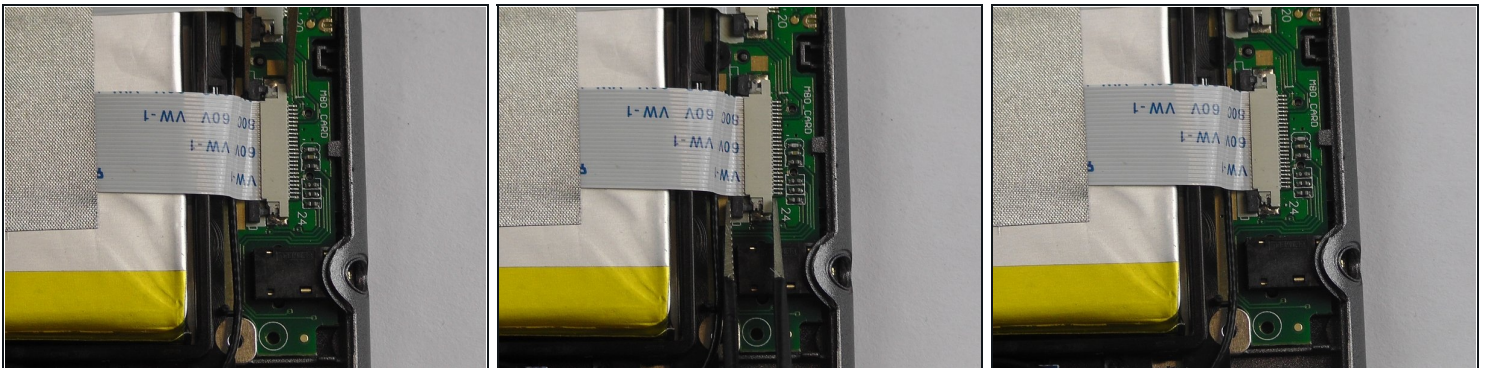


## Step 7



- Re-insert the wire into the socket.

## Step 8



- Using the tweezers, push the black tabs back in.

---

To reassemble your device, follow these instructions in reverse order.