



Garmin Nuvi 2689LMT Screen Replacement

The touch screen display of the Garmin Nuvi 2689LMT is the most essential part of the device.

Written By: Spencer



INTRODUCTION

In this guide, we are going to provide step-by-step instructions that will show how to properly replace the device's touch screen.

TOOLS:

- [iFixit Opening Tools](#) (1)
 - [Heavy-Duty Spudger](#) (1)
 - [T5 Torx Screwdriver](#) (1)
 - [Tweezers](#) (1)
-

Step 1 — Screen



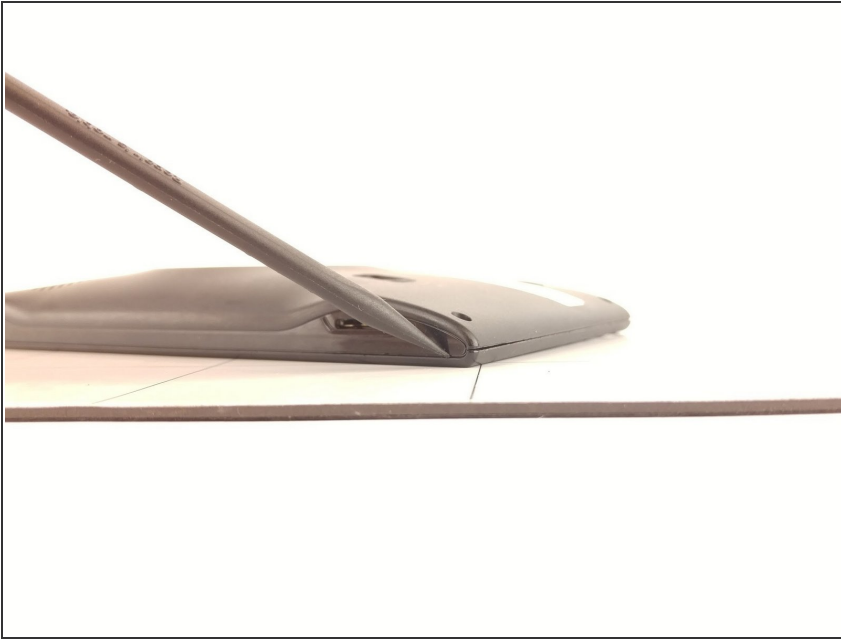
- Remove the stand by depressing the tab and rocking the round interface back away from the tab, pulling it away from the Garmin unit.

Step 2



- Remove the four 4mm hex screws from the four corners of the unit using a T5 bit.

Step 3



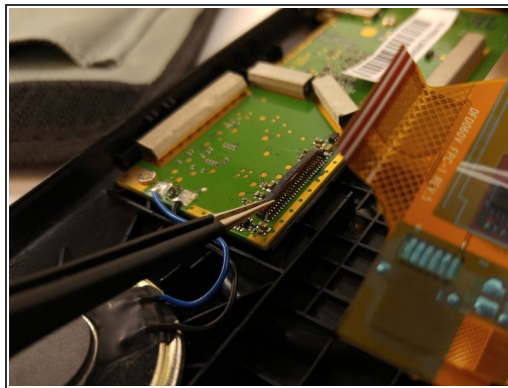
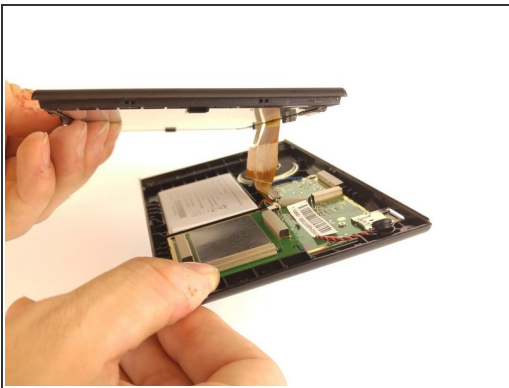
- ① Place the unit screen-side down flat, with the bottom facing you. There are two seams; the one on top is artificial.
- This is the real seam—open it with a plastic opening tool in step 4.

Step 4



- Firmly force a plastic spudger into the bottom seam and pry open a section. Use a prying/pushing motion to force the tool into the unit until you feel a click.
- Repeat this all the way around the seam.

Step 5



- Do not attempt to separate the unit until all the tabs have been separated. Once the seam is completely separated, you can lift the back away from the screen easily.

Step 6



- Retrieve a new screen and connect the flat-gold wire to the socket from where you removed the old screen.

To reassemble your device, follow these instructions in reverse order.