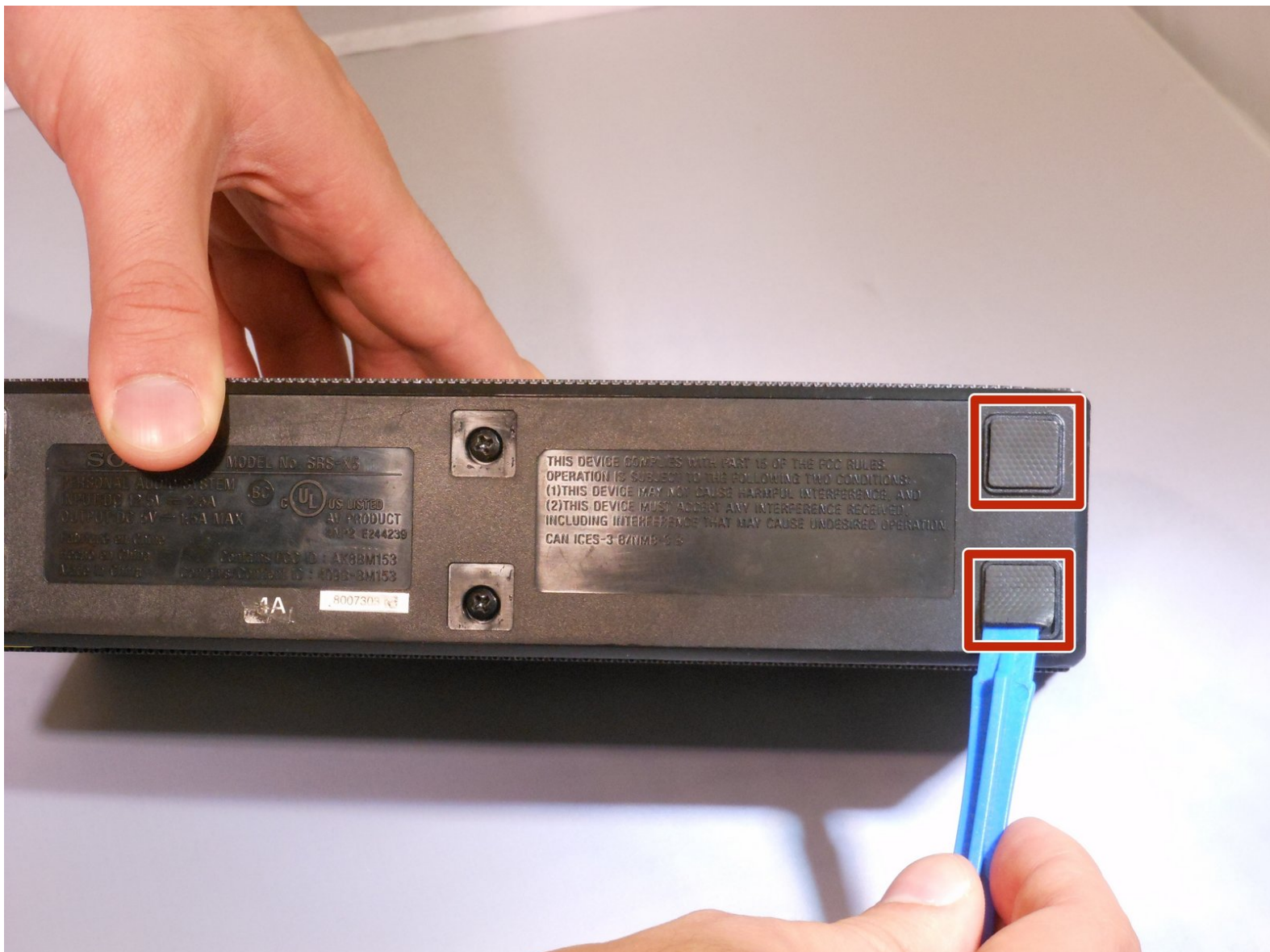




# Sony SRS-X5 Battery Replacement

Use this guide to replace the battery in your Sony SRS-X5 Bluetooth speaker.

Written By: Carrie Cutler



---

## INTRODUCTION

This guide will demonstrate how to remove the malfunctioning battery from the Sony SRS-X5 Bluetooth speaker.

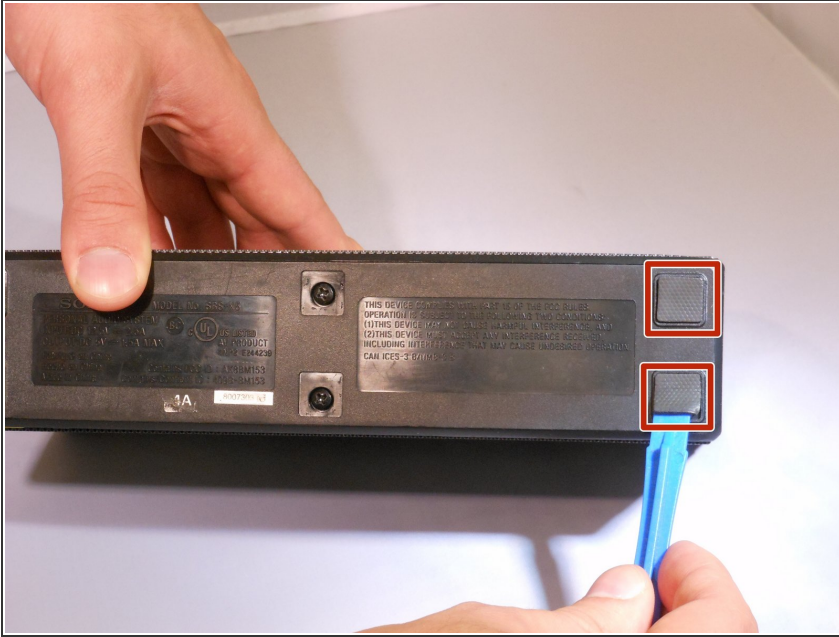
---



### TOOLS:

- [iFixit Opening Tools](#) (1)
  - [Phillips #1 Screwdriver](#) (1)
-

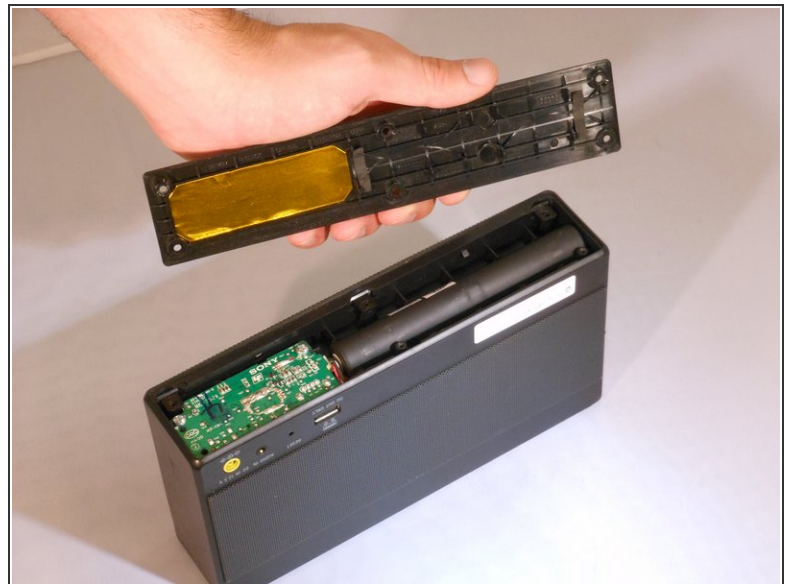
## Step 1 — Battery



- To gain access to the 6 bottom screws remove the following. Remove the adhered 4 corner foam pads on the bottom of the speaker using the blue plastic opening tool to reveal the screws underneath. Remove the adhered 2 center plastic squares.

⚠ Make sure the speaker is unplugged and powered down before doing any work on the device.

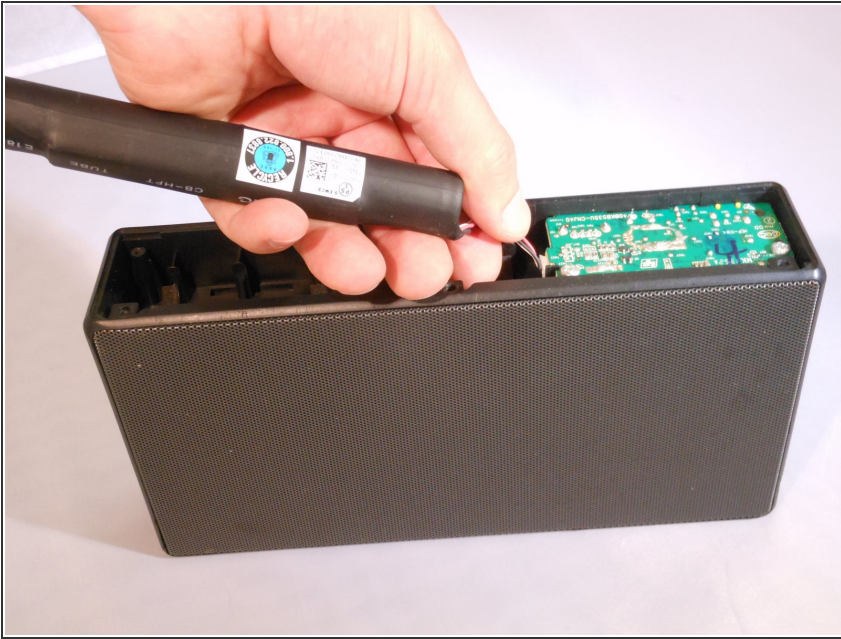
## Step 2



- Unscrew the six 6mm screws with a Phillips head #1 screwdriver.
- Remove the bottom panel of the speaker.



### Step 3



- Unplug the battery by gently pinching the plastic end connected to the smaller board and pull away.
- Remove the battery.

To reassemble your device, follow these instructions in reverse order.