



PlayStation Move Battery Replacement

This guide will show the steps to dismantle the...

Written By: Jenelle Mohammed



INTRODUCTION

This guide will show the steps to dismantle the move controller and remove the battery in order to have it replaced.

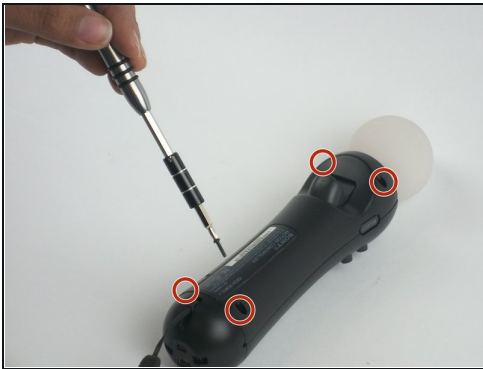
TOOLS:

[Tweezers](#) (1)

[iFixit Opening Tool](#) (1)

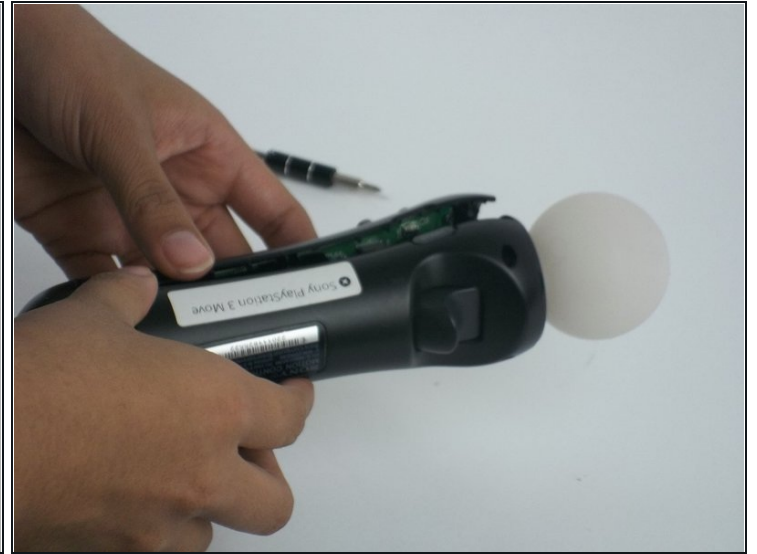
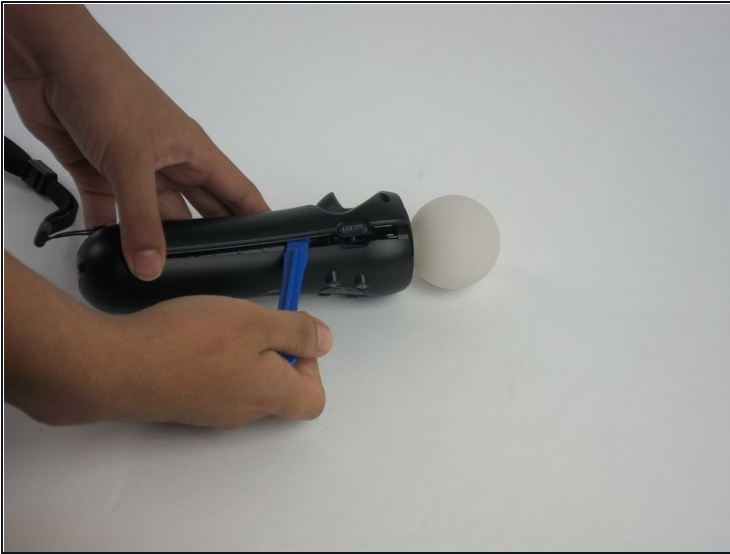
[Phillips #0 Screwdriver](#) (1)

Step 1 — Battery



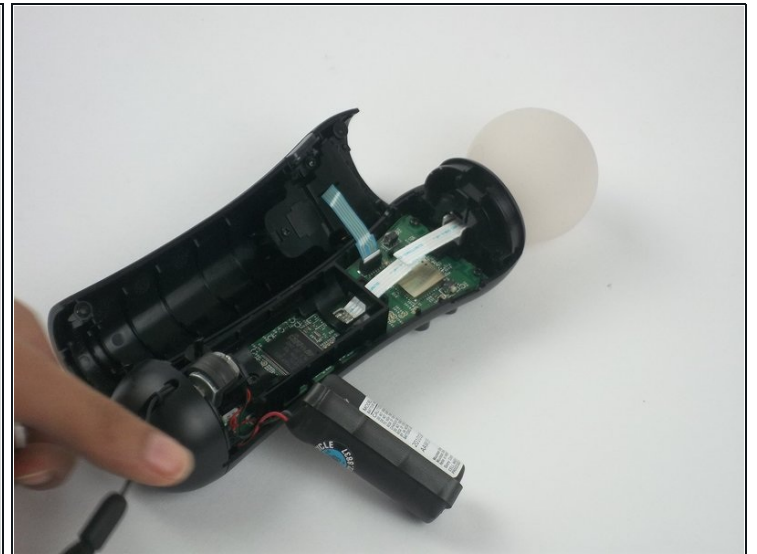
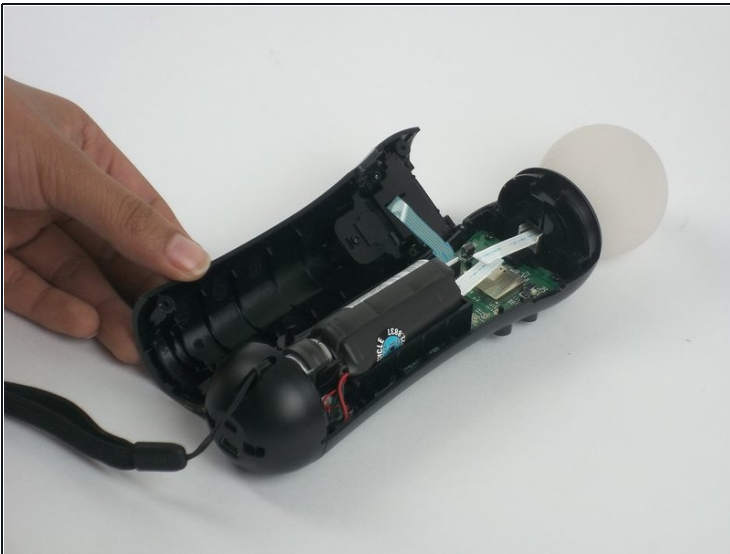
- Using a Phillips #0 screwdriver, remove the four 10mm screws located on the back of the device.

Step 2



- Insert the plastic opening tool at the indent.
- Gently use a forward and backward motion to safely pop open the cover.
- Using your hands to further pull it apart.

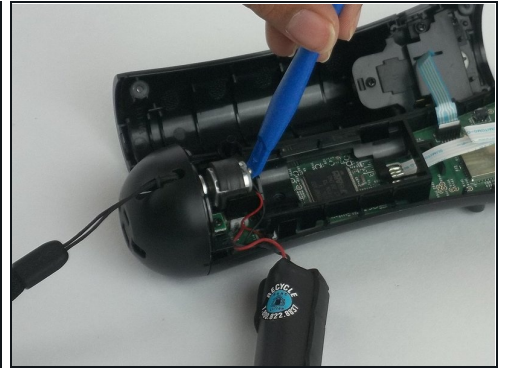
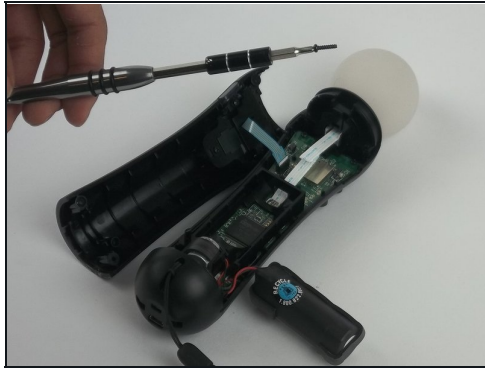
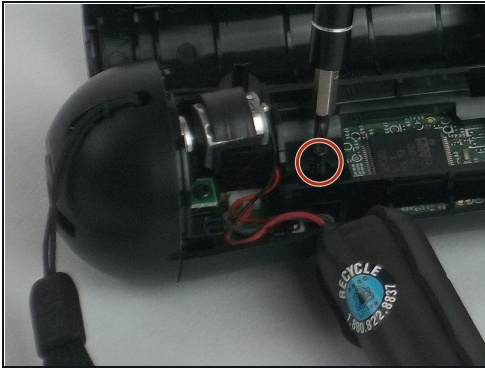
Step 3



- Once the device is opened, lift the battery out of the black plastic holder.

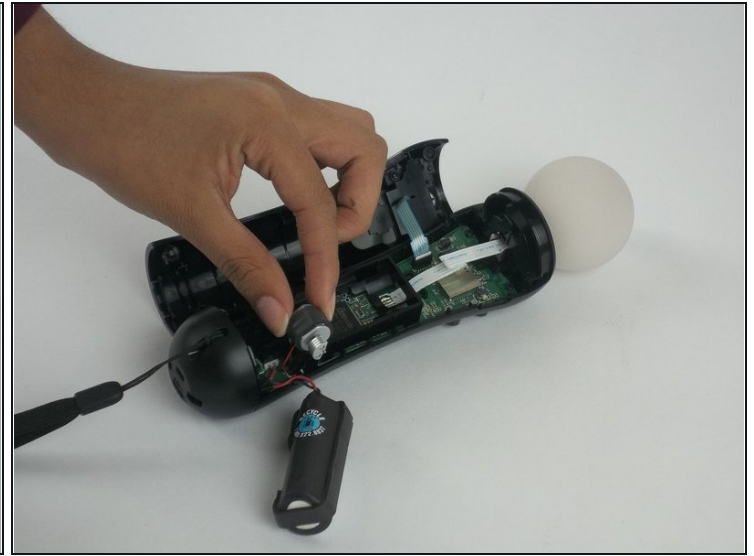
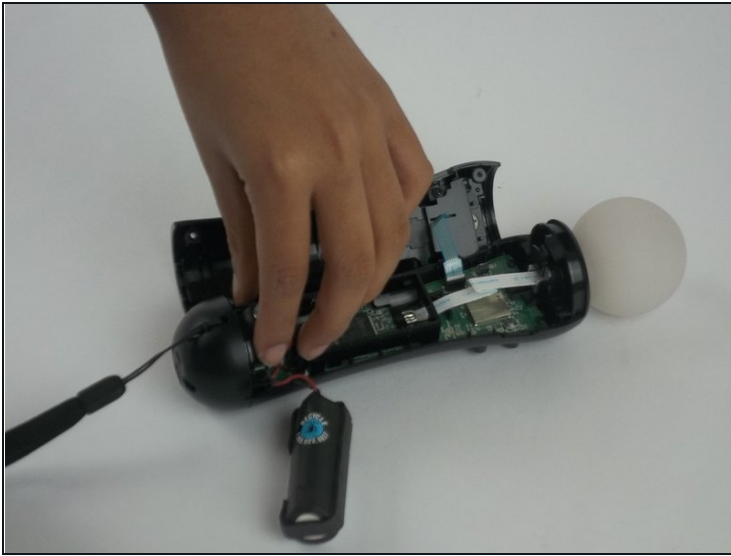
⚠ Carefully pull the battery out and ensure that it's wires are still connected to the inside.

Step 4



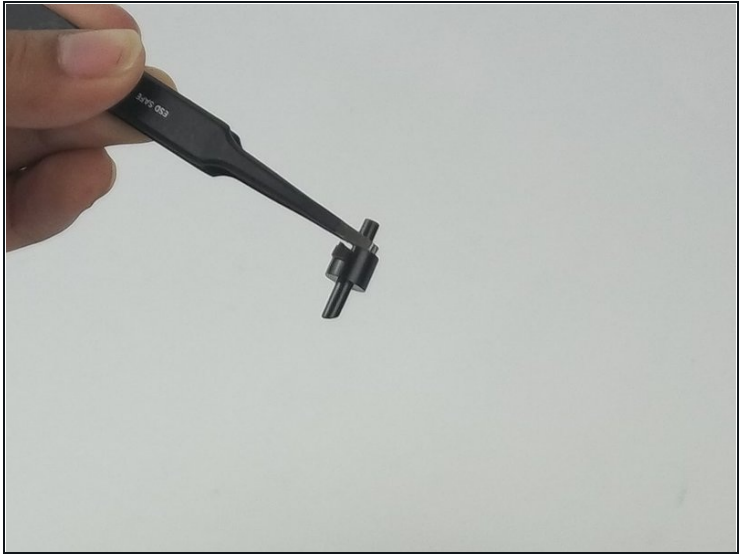
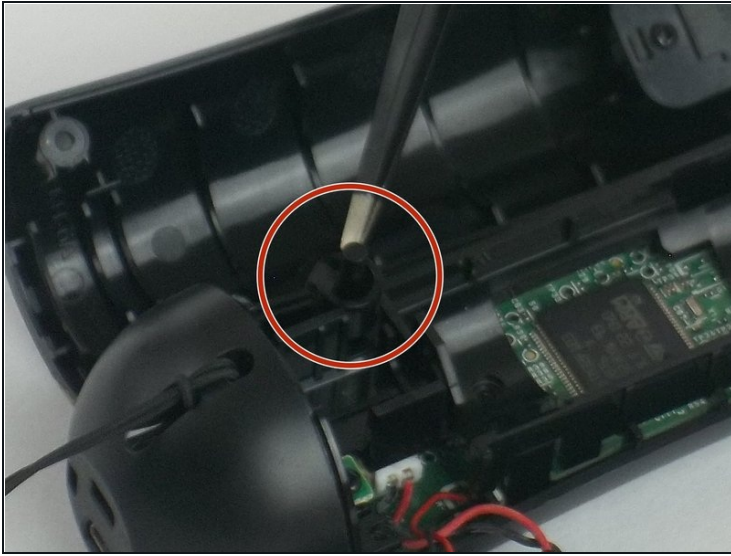
- Using a Phillips head screwdriver, remove the 9mm screw located to the right of the battery, which is connected to the inner plastic frame.
- Using the plastic opening tool carefully take out the grey cylindrical piece (vibrator) that is also attached to a wire.

Step 5



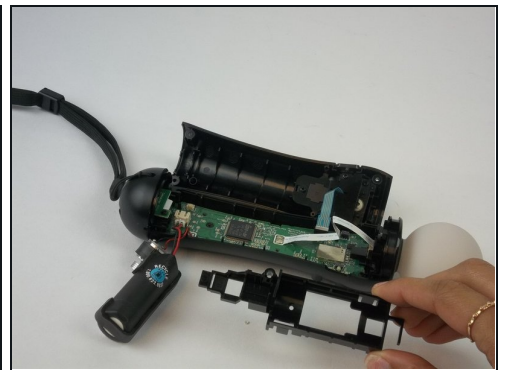
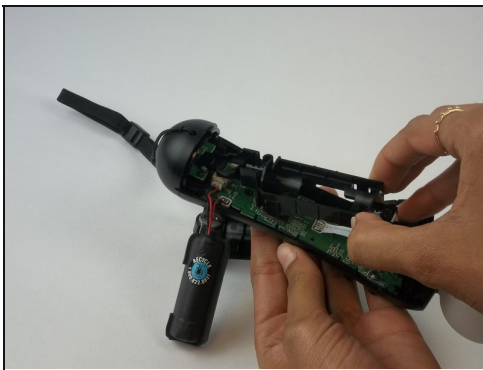
- Gently pull out the small grey cylindrical piece (vibrator).
- ① Removing this piece makes it easier to access the wire connection of the battery and remove it.

Step 6



- Using [tweezers](#), remove the small piece with a cylindrical top that is located to the left of the inner plastic frame.

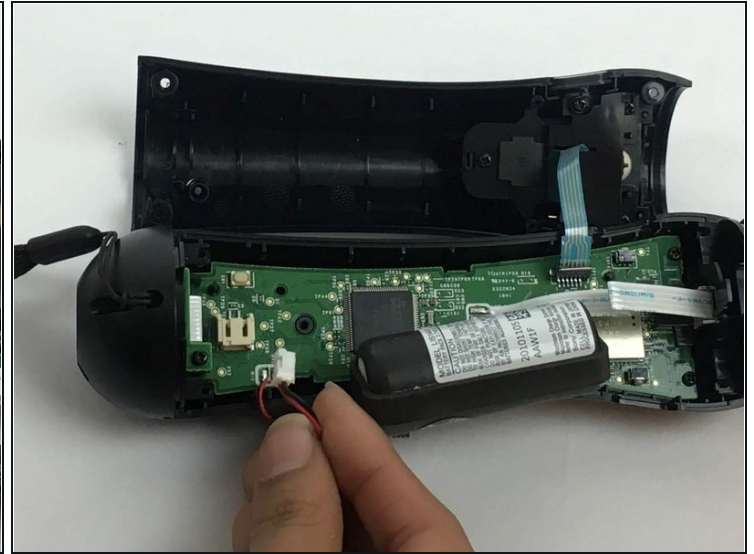
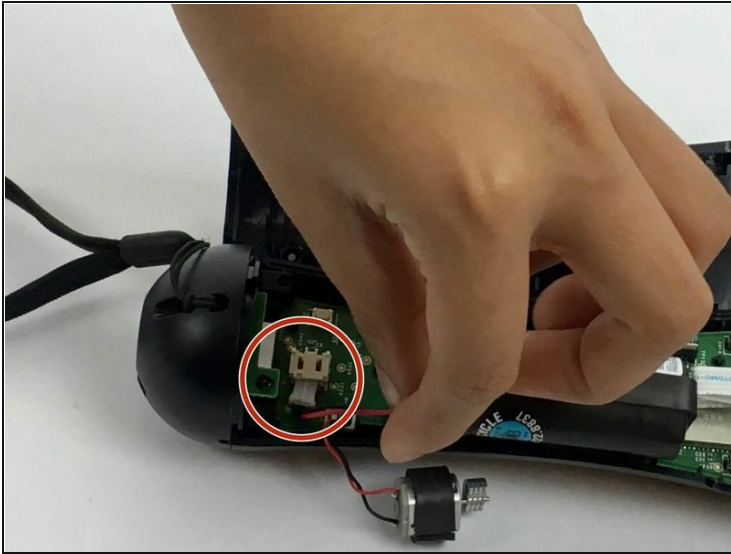
Step 7



- Using one hand to hold the device, and the other hand to squeeze the inner plastic frame.
- Remove by squeezing the inner plastic frame, lift and pull it towards you.

⚠ While removing the frame, be extremely careful because it could damage the frame or the motherboard.

Step 8



- Gently pull on the white piece connecting the battery and the connector.

To reassemble your device, follow these instructions in reverse order.