



Insignia NS-BCDCAS1 Tape Cassette Player Replacement

Written By: Erin King

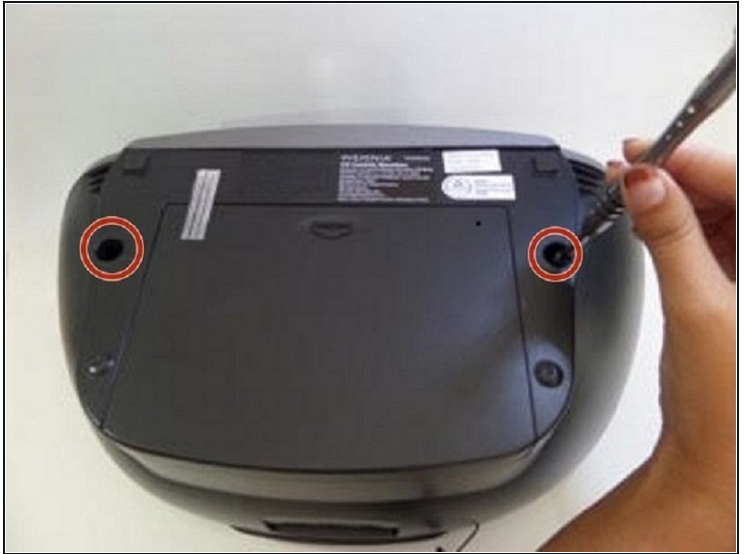


 **TOOLS:**

2.5 mm Flathead Screwdriver (1)

Phillips #1 Screwdriver (1)

Step 1 — Outer Panels



- Turn the boombox around to see the back, and then flip it upside down.
- Insert a 2.5mm flathead driver into the two holes next to the battery compartment.
- Turn the driver counterclockwise several times to loosen and pull out the 17mm screw.

Step 2



- Peel off the two black square foams in front of the battery compartment to reveal a screw under each one.

Step 3



- Remove the two 8mm screws using a 2.5mm flathead driver.
- The front grey panel will loosen up once the final screw is removed.

Step 4



- Turn the boombox on its back.
- Release the front panel by pushing down on the latches holding the panels together.
- There are four silver latches on the top side of the panel and one on the bottom.
- ⓘ Do not force the panel completely off, there are cables attached inside.

Step 5



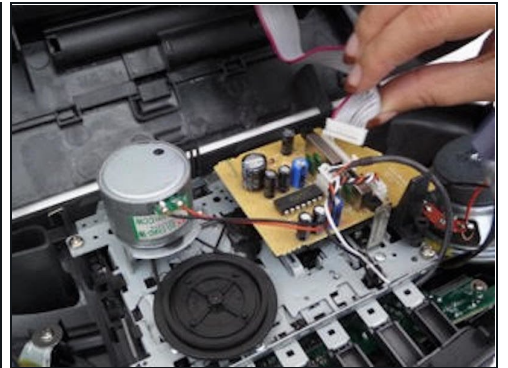
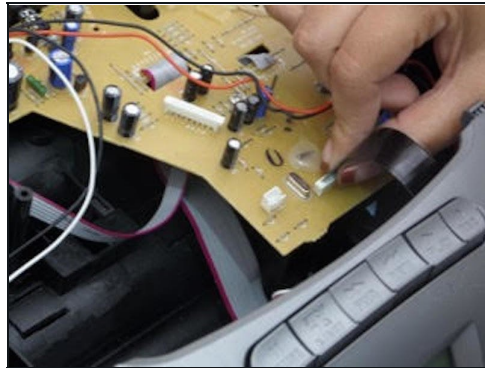
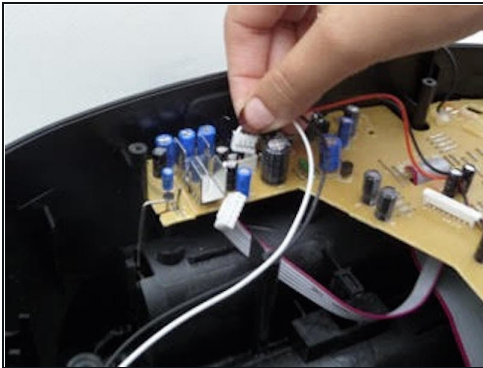
- Turn the boombox around to view the back and lift the handle up.
- Using the same driver with 2.5mm flathead, remove the two 14mm screws under the handle.
- Gently lift the black top but do not pull completely away.

Step 6 — Tape Cassette Player



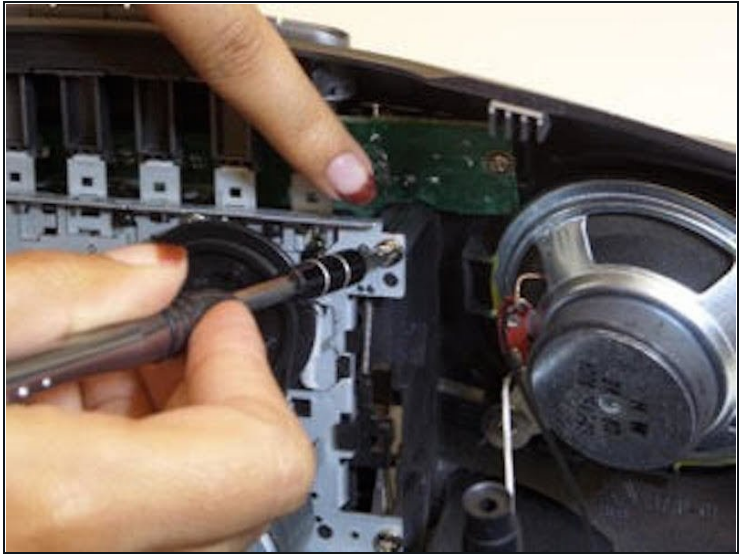
- Face the bottom of the opened boombox, and detach the front panel from the back in the following order:

Step 7



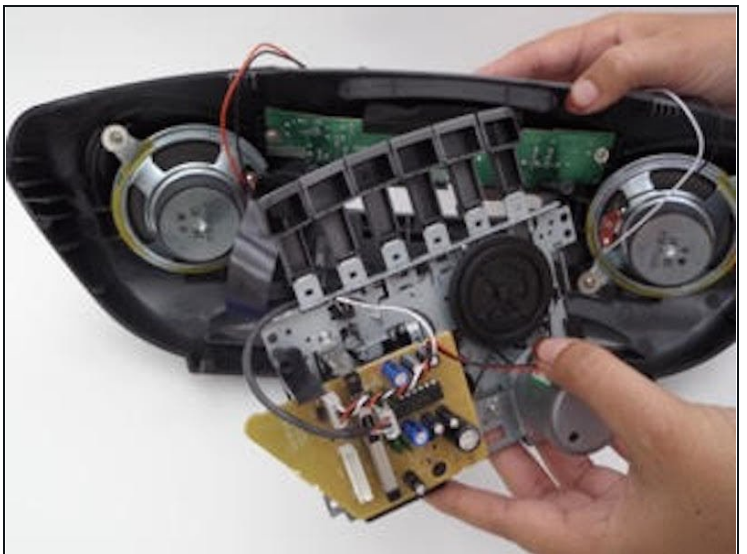
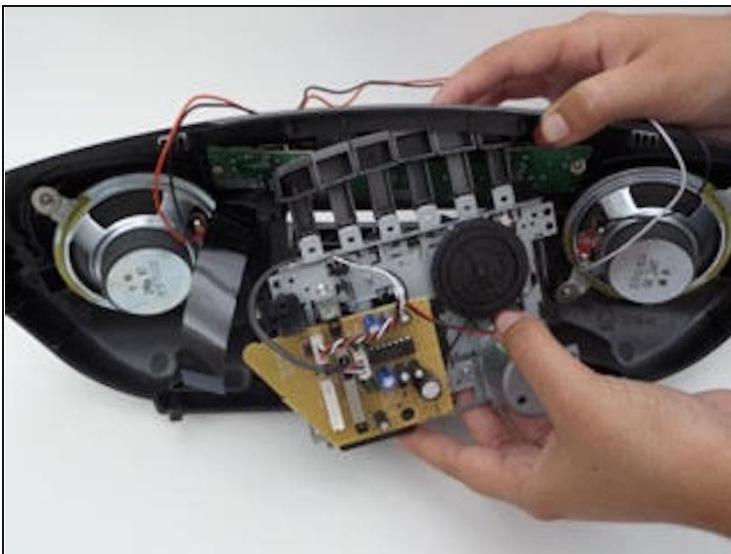
- Unplug the 4 wires (1 red, 2 black, 1 white) from the yellow motherboard on the front panel, by pulling upwards.
- Pull the black tape attached to the white plug on the yellow motherboard by tugging upwards.
- Detach the thicker, white and pink cord on the smaller yellow plate on the front panel by pulling away.

Step 8



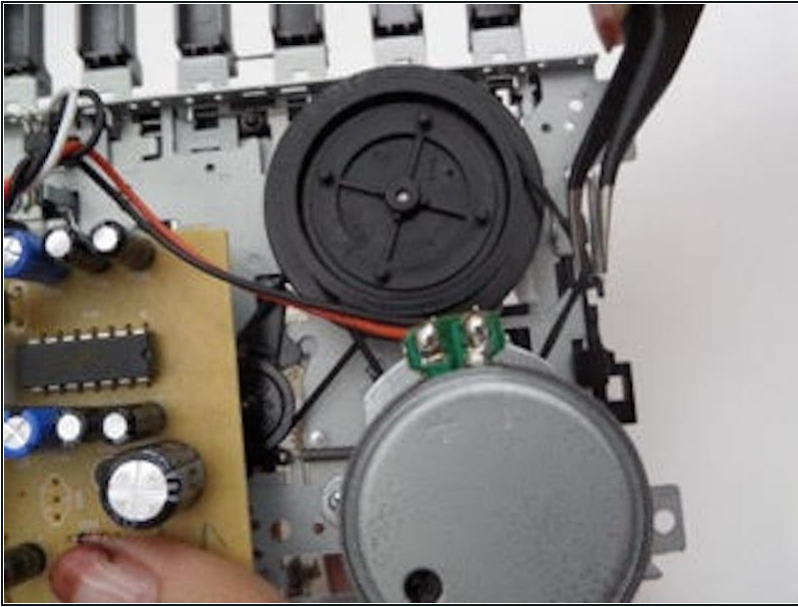
- Facing the inside of the front panel, on the corners of the grey plate, there are four screws. Unscrew these with a phillips 1.

Step 9



- Face the inside of the front panel. Push the buttons down gently to slide the cassette player unit out.

Step 10



- On the back of the unit to the right of the motherboard and between the motor and black circle, there is a rubber band that allows the spinning wheels to spin the knobs. Using [tweezers](#), remove the rubber band and replace it.

To reassemble your device, follow these instructions in reverse order.