



Palm m 100 Cover Replacement

This guide will enable the user to remove and replace the cover.

Written By: Anne Carey



INTRODUCTION

If the front and/or rear cover is cracked, this guide will teach the user to remove the damaged cover and replace with a new one.



TOOLS:

- [T5 Torx Screwdriver](#) (1)
-

Step 1 — Cover



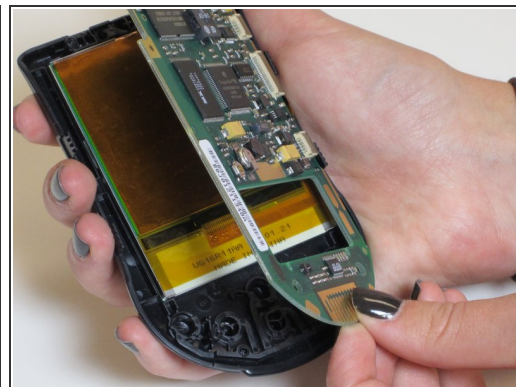
- Remove the batteries.

Step 2



- Using a Torx 5 screwdriver, remove the four screws located on the rear cover of the device by turning counterclockwise. Set aside screws.

Step 3



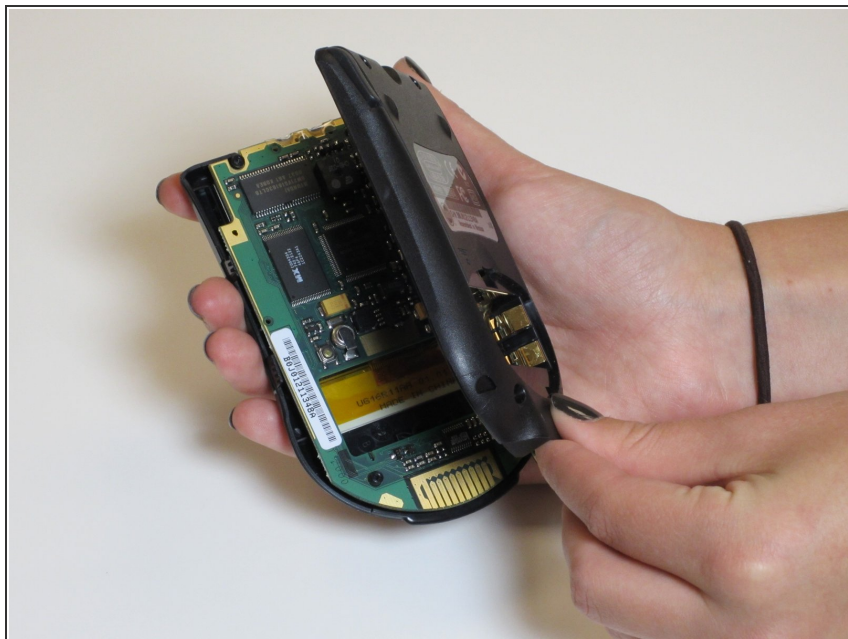
- Remove rear cover by gently lifting it up from the bottom. To remove the front cover, flip the device over, and then separate the screen/circuit board from the cover.

Step 4



- Set aside broken cover, and replace with a new cover.

Step 5



- Close again like a book, and lay it gently into the front panel. Make sure the screen is facing outwards of the front panel.

Step 6



- Put the back cover on the device and screw the four screws, screwing in a clockwise direction. Take caution not to over-tighten the screws.

To reassemble your device, follow these instructions in reverse order.