



# HP Slate 7 Plus 4200US Battery Replacement

Use this guide to replace the battery on your HP Slate 7 Plus 4200US.

Written By: Jessica Andrade





## TOOLS:

- [iFixit Opening Tools](#) (1)
  - [Spudger](#) (1)
  - [Soldering Iron](#) (1)
-

## Step 1 — Tablet Cover



- Turn off the tablet and disconnect the power and all external devices from the tablet.
- Position the tablet with the display panel down and the right side toward you.
- Carefully insert a plastic opening tool between the tablet cover and display panel assembly, separating the two components. The first insertion point should be between the power button and the volume buttons.

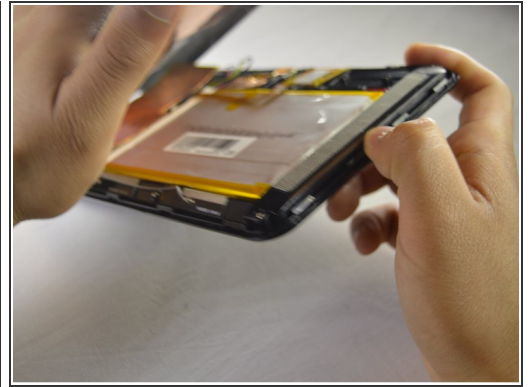
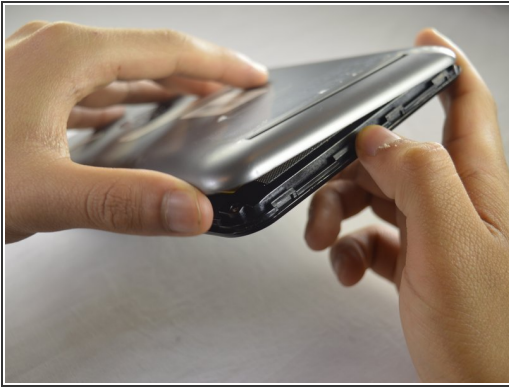
## Step 2



- Slide the tool around the perimeter of the tablet until the edge of the cover is completely separated from the display panel assembly.

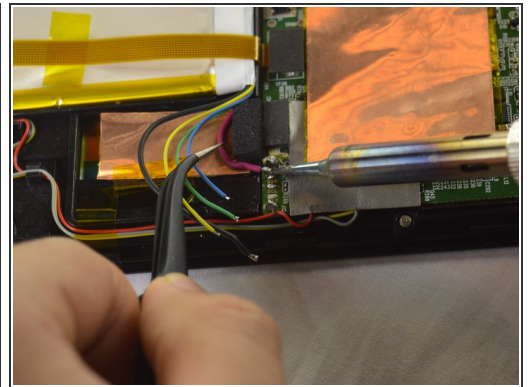
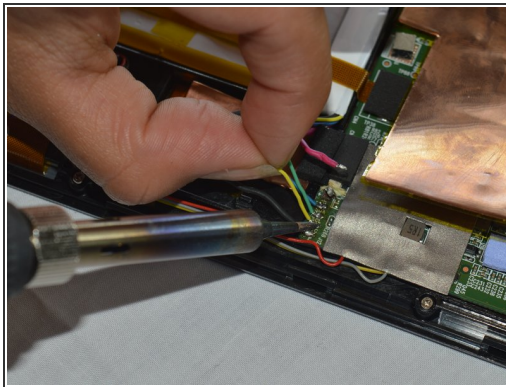
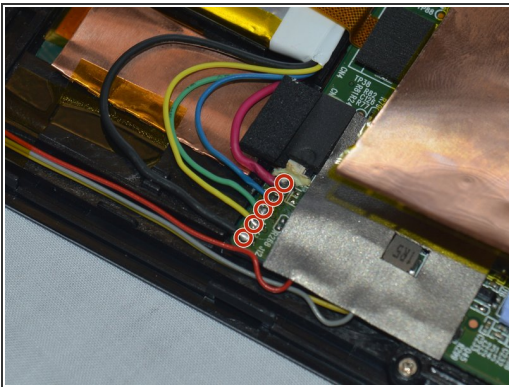


## Step 3



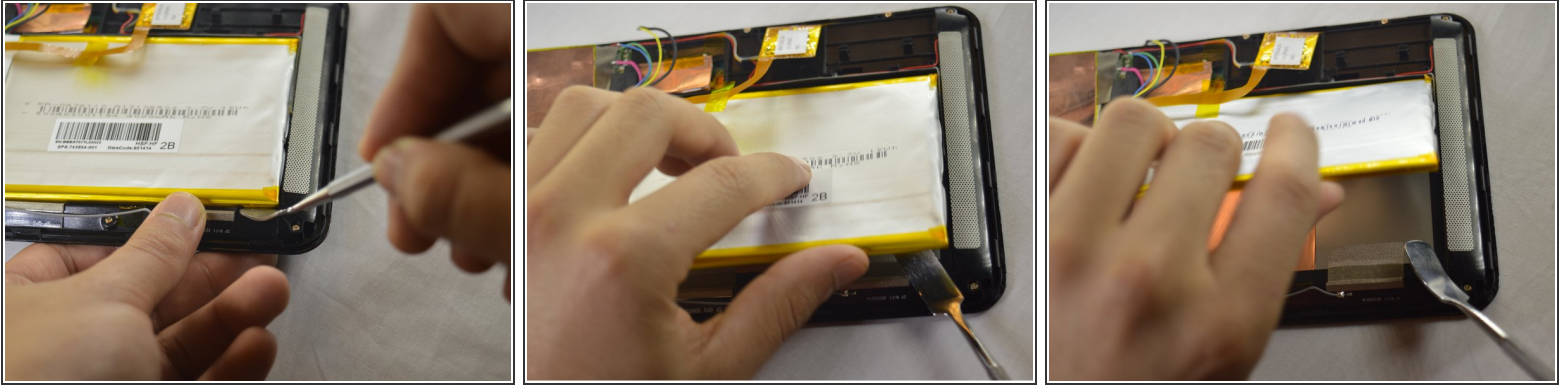
- Pry open the back cover to take it off.

## Step 4 — Battery



- Disconnect the battery cables from the system board by desoldering them. See [iFixit guide on how to solder](#).
- ⓘ The battery cables are soldered to the system in the following sequence, top to bottom: red, blue, green, yellow, black.

## Step 5



- Insert a nylon spudger between the battery and the display panel assembly. Carefully pry the battery up and remove it from its place.
- ⓘ The battery is attached to the display panel assembly with double-sided adhesive. Make sure to firmly pull the battery.
- ⚠ The regular black nylon spudger should be used whenever possible, especially around batteries.

To reassemble your device, follow these instructions in reverse order.