



# Nikon 1 AW 1 Internal Body Seal Replacement

This guide will help through the process of replace the internal body seal of your Nikon 1 AW1.

Written By: Daniel Heshmaty



## INTRODUCTION

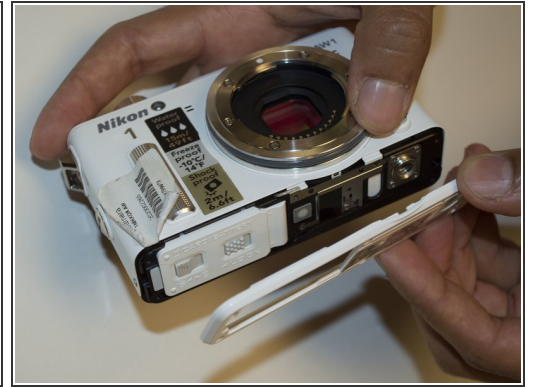
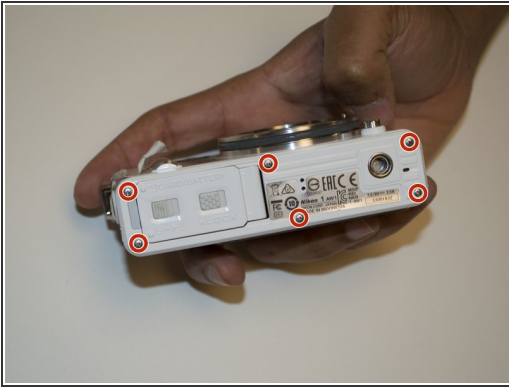
The seal in the internal body of the camera is part of what keeps water and other detrimental particles out of the camera. This guide will show you how to replace a weathered one.

---

### TOOLS:

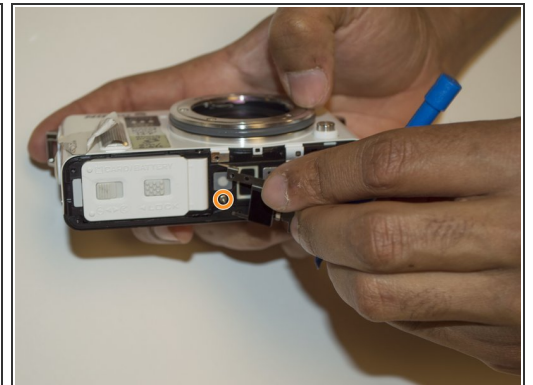
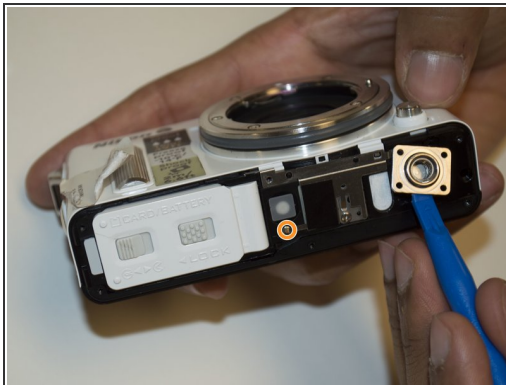
- [Phillips #00 Screwdriver](#) (1)
  - [iFixit Opening Tools](#) (1)
  - [Flathead 3/32" or 2.5 mm Screwdriver](#) (1)
  - [T4 Torx Screwdriver](#) (1)
  - [Tweezers](#) (1)
-

## Step 1 — Buttons



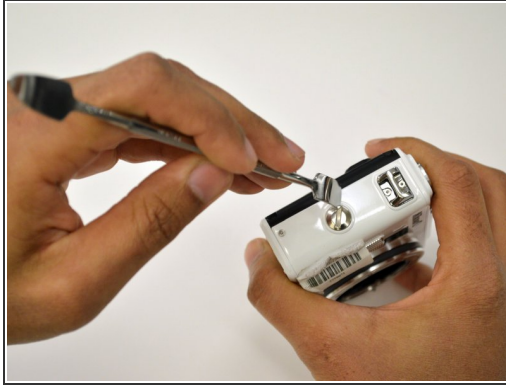
- Using the Phillips PH00 screwdriver, remove the six 4.0mm screws marked in red. Then remove the panel cover by lightly pulling it off.

## Step 2



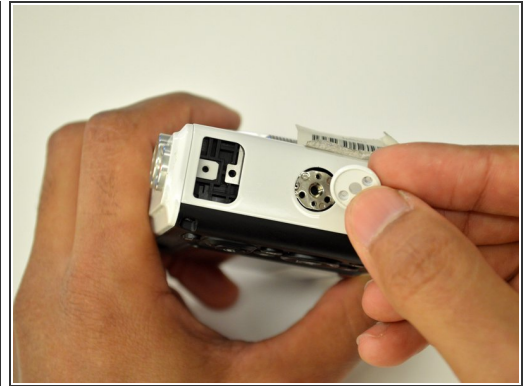
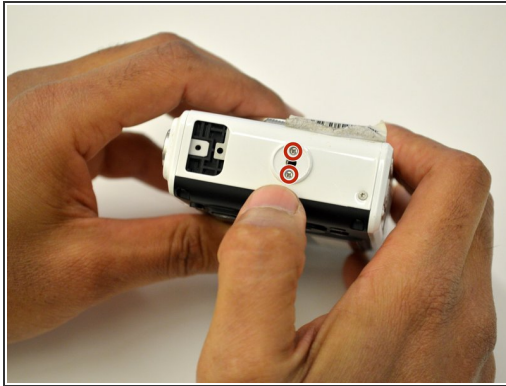
- Using the Phillips PH00 screwdriver, remove the four 5.5mm screws in the red circles. Then use a plastic opening tool to pry off the tripod socket.
- Remove the metal plate to have access to the 4.9mm screw under the orange circle, use the Phillips PH00 screwdriver to remove it.

### Step 3



- Using a T4 head screwdriver remove the three 5.4mm screws marked with the red circles.
- Use a 1/4" flathead screwdriver or a flat head tool to release the grip attachment screw.
- Remove the camera strap eyelet.

### Step 4



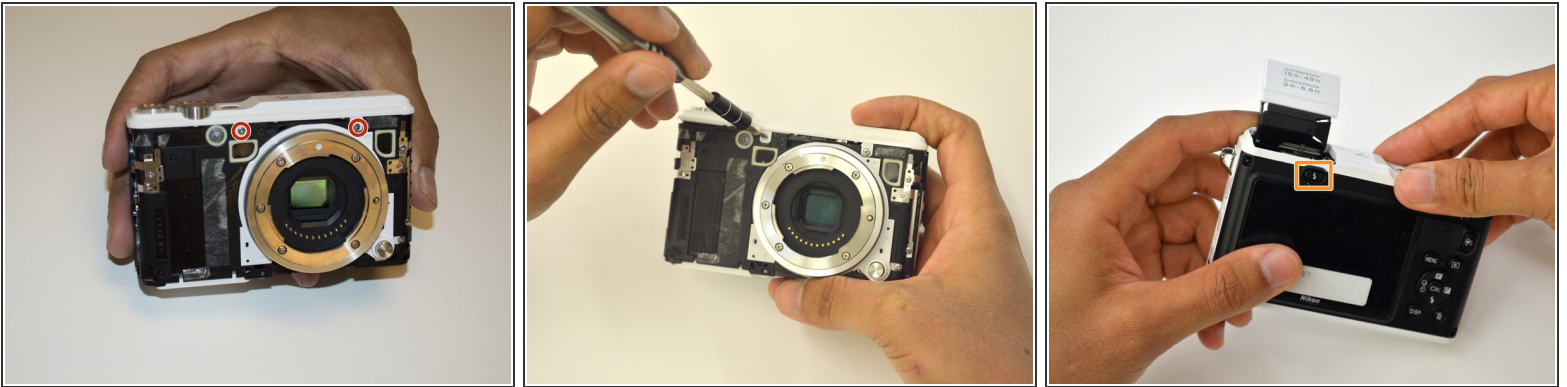
- Remove the grip attachment screw.
- Use a Phillips PH00 to remove the two 2.4mm screws on the grip attachment slot, then remove the slot.

## Step 5



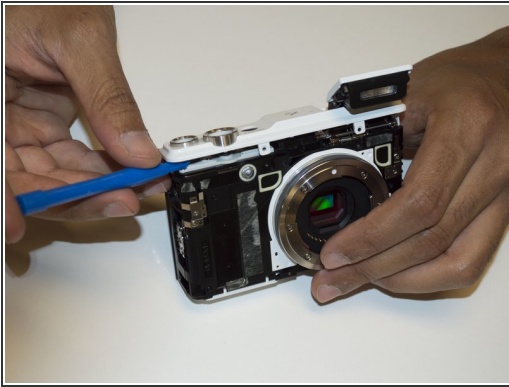
- Use a T4 screwdriver to remove the three 5.4mm screw marked with the red circles and the eyelet strap.
- Use a plastic opening tool to lift the front camera cover off.

## Step 6



- Use a Phillips PH00 to unscrew the two 3.5mm screws in red.
- Press the flash pop-up button in the orange rectangle to be able to remove top cover of the camera.

## Step 7



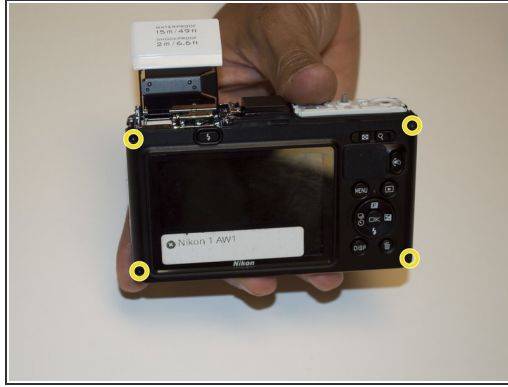
- Use a plastic opening tool to lift off the top panel.

## Step 8



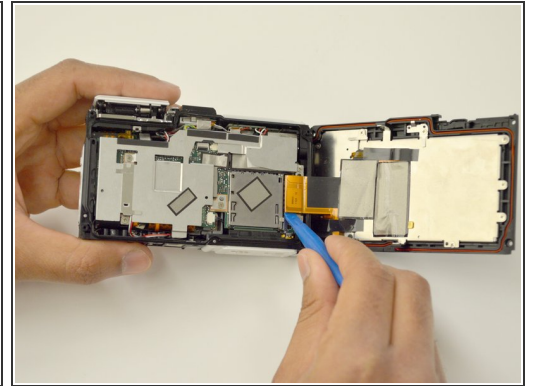
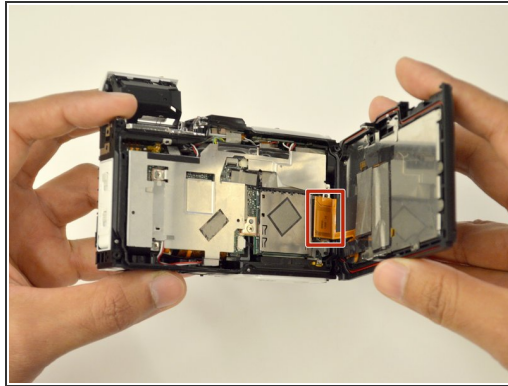
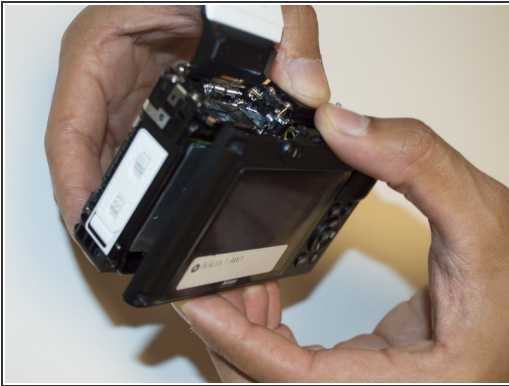
- If you needed to replace any buttons, you may now do so by pulling them off.

## Step 9 — Internal Body Seal



- Use a Phillips PH00 screwdriver to remove the 3.8mm screw in red.
- Use a Phillips PH00 screwdriver to remove the 4.9mm screw in orange.
- Use a Torx T4 screwdriver to remove the four 5.5mm screws in yellow.

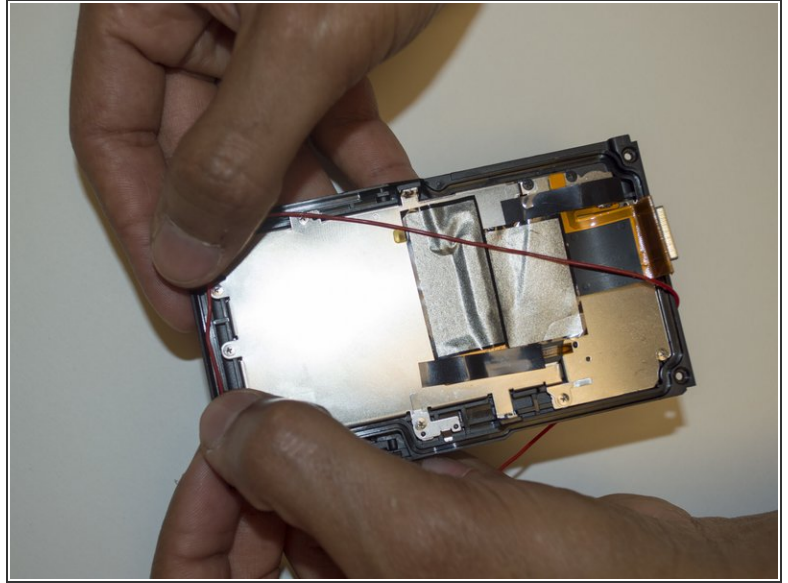
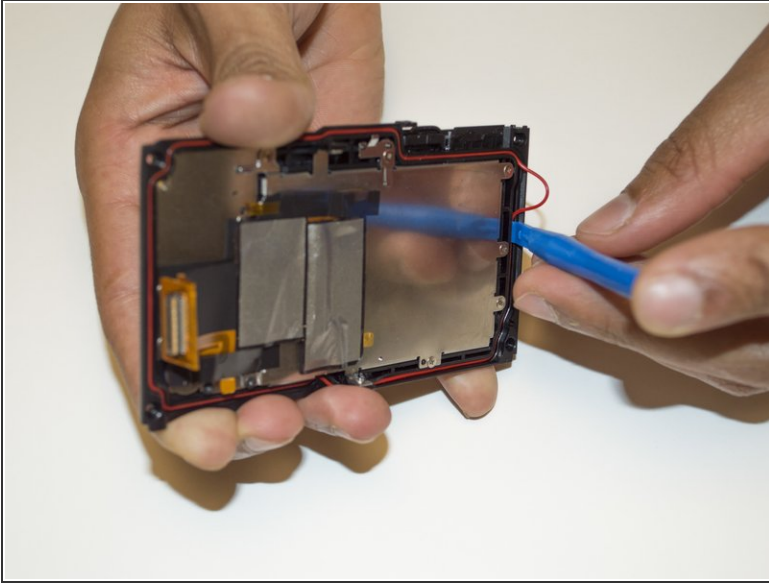
## Step 10



⚠ Separate rear panel from the camera main body, starting from the HDMI and USB connector side. Do NOT pull the rear panel completely off of the camera yet.

- Use a plastic opening tool to pry out the connector marked in red.

## Step 11



- Use the plastic opening tool to pull out the old seal from the groove in the rear panel.
- If you needed to replace the seal, you may now do so.

To reassemble your device, follow these instructions in reverse order.