



RCA Small Wonders Camcorder CC176 Top Control Panel Replacement

Step by step instructions directing the user to replace the top control panel of an RCA Small Wonders Camcorder cc176.

Written By: Allison Baudoin



INTRODUCTION

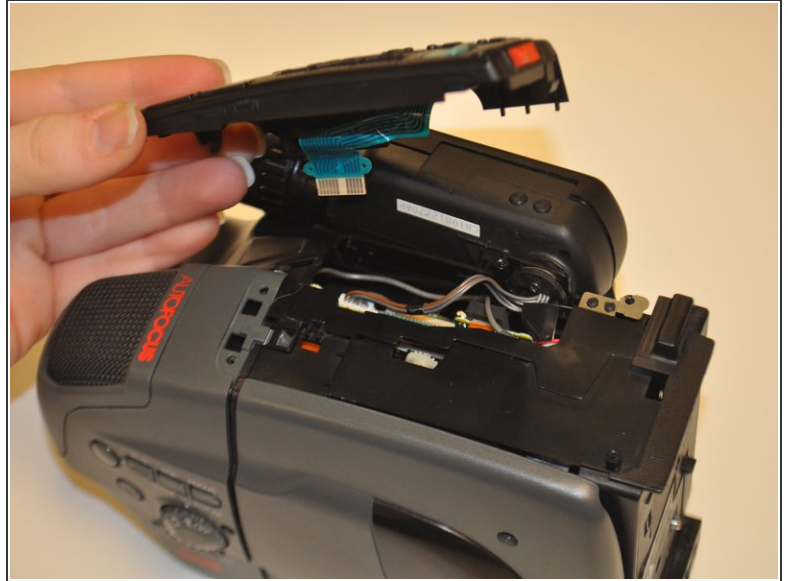
RCA Small Wonders Camcorder cc 176 was manufactures May 1993. Use this guide to remove the control panel of the camcorder to repair or replace panel.



TOOLS:

- [Essential Electronics Toolkit](#) (1)
-

Step 1 — Top Control Panel



- Remove the 5 small black screws along the edges of the control panel at the top of the device.
- Wedge a small flathead screwdriver around the edges of the panel. Loosen the edges of the panel until it pops away from the device.
- Locate the blue circuit strip along the underside of the control panel and disconnect it from the inner components of the device.
- Remove the top control panel from the device after it has been disconnected.

To reassemble your device, follow these instructions in reverse order.